

H76 W180, 200, 220, 240, 260, 280, 300, 320 D 100,110, 120, 130 CM

DESCRIPTION

The Monument table seamlessly blends functionality with sculptural artistry, transforming any space with its minimalist yet striking design. Crafted from sustainably sourced wood, it stands as a testament to both durability and timeless elegance. The table's distinctive design features a uniquely shaped top and legs positioned at varying angles, creating a dynamic appearance from every viewpoint. Offered in a selection of wood finishes, the Monument table can be customized to suit a variety of interior aesthetics. This piece embodies Artisan's commitment to innovative design and exceptional craftsmanship, making it a bold and unforgettable addition to any environment.

PRODUCTION PROCESS

Tables are crafted from carefully selected, high-quality solid wood, chosen for its durability and distinctive natural grain. Each piece of wood is precisely cut and shaped to achieve clean lines and balanced proportions. Skilled artisans meticulously assemble the components using traditional joinery techniques, ensuring lasting strength and stability. Surfaces are finely sanded to enhance the wood's texture and prepare it for finishing. The final stage involves applying a chosen finish - whether natural oil, wax, or another treatment - to protect the wood and highlight its organic beauty. The result is a versatile, handcrafted table that seamlessly blends functionality with timeless design.

PRODUCT TYPE

Table

USAGE

Indoor

DISMANTLING OPTION

Yes

GLIDERS

Felt pads

STOCK ITEMS

No

COUNTRY OF ORIGIN

BiH

NOTE

Mega lengths and between sizes possible.
Other modifications and prices on request.
The listed weights are approximate; the weight of each piece depends on its dimensions and the type of wood.

DIMENSIONS

Height: 76 cm/ 29.92 in
Width: 180 - 320 cm/ 70.87 - 125.98 in
Depth: 100,110,120,130 cm/ 39.37,43.31,47.24, 51.18 in
Top thickness: 6 cm/ 2.36 in
Visually: 6 cm/ 2.36 in

PACKAGING

Stretch wrap + five-layer cardboard box.
1 piece

PACKAGING DIMENSIONS

Height: 80 cm/ 31.49 in
Width: 185-325cm/ 72.83-127.95 in
Depth: 115-135 / 45.27-53.14 in
Dismantling packaging dimensions on request.

WEIGHT

Weight: 80-220kg
Packaging: 5- 7.5 kg

WOOD

Oak, American and European walnut, elm, cherry, maple, ash

TABLE TOP

Solid wood

TABLE BASE

Solid wood

WOOD FINISHES

Available in a variety of natural oil and soap finishes.
More information at artisan.ba/materials

TABLE TOP AND BASE FINISHES

Available in a variety of natural oil and soap finishes.
More information at artisan.ba/materials

CLEANING INSTRUCTIONS

Please download our material care & cleaning instructions through artisan.ba/materials

AMERICAN WALNUT
A01 Natural soap



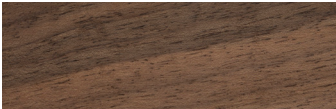
AMERICAN WALNUT
A03 Natural oil



EUROPEAN WALNUT
A01 Natural soap



EUROPEAN WALNUT
A03 Natural oil



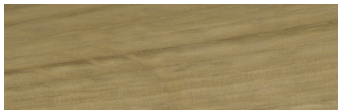
EUROPEAN WALNUT
A04 White oil



EUROPEAN WALNUT WITH KNOTS
A03 Natural oil



OAK
A01 Natural soap



OAK
A03 Natural oil



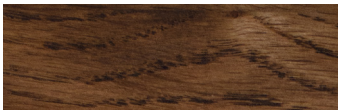
OAK
A3 Loba white oil



OAK
A04 White pigmented oil



OAK
Wenge oil



OAK
AR1 Jahorina pigment



OAK
Rubio black



OAK WITH KNOTS
A03 Natural oil



ELM
A01 Natural soap



ELM
A03 Natural oil



ELM
A04 White pigmented oil



ELM
AR1 Jahorina pigment



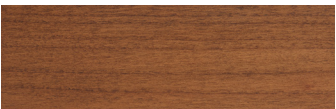
CHERRY
A01 Natural soap



CHERRY
A03 Natural oil



CHERRY
AR4 Dark oil



MAPLE
A01 Natural soap



MAPLE
A04 White pigmented oil



ASH
A04 White pigmented oil



AVAILABLE IN COLORED WOOD.
For more material options please check artisan.ba/materials