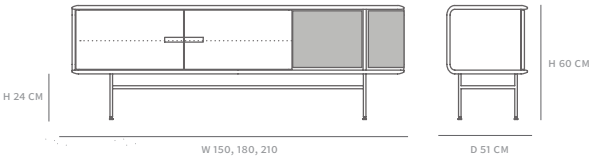




WITH METAL OR WOODEN LEGS.
W 150 - 2 DOORS + 1 OPEN COMP.
W 180 - 2 DOORS + 1 OPEN COMP.
W 200 - 2 DOORS + 1 OPEN COMP.
W 150 - 3 DOORS
W 180 - 3 DOORS



DESCRIPTION

The Leno sideboard is a sleek and versatile piece, embodying Artisan’s signature craftsmanship and thoughtful design. Its solid wood body showcases the natural grain and warmth of the material, balanced on a slender black metal frame that adds an airy, modern touch. The storage features spacious compartments and drawers, offering practical organisation while maintaining a clean, minimalist aesthetic. Subtle design details emphasise the harmony between form and function.

PRODUCTION PROCESS

The sideboards, lowboards and cabinets are crafted from solid wood, carefully chosen to showcase the natural grain and texture. Precisely cut and shaped, each piece features clean lines, perfectly fitted joints, and sturdy construction for long-lasting durability. Surfaces are hand-sanded and finished to protect the wood and enhance its organic beauty. High-quality hardware ensures smooth, silent door and drawer operation, while select designs feature sculpted fronts or integrated handles that highlight Artisan’s craftsmanship. Available in various styles and finishes, these sideboards blend timeless elegance with functionality, making them a versatile addition to any space.

PRODUCT TYPE

Sideboard

USAGE

Indoor

DISMANTLING OPTION

No

GLIDERS

Adjustable feet

STOCK ITEMS

No

COUNTRY OF ORIGIN

BiH

NOTE

Other modifications and prices on request.
The listed weights are approximate; the weight of each piece depends on its dimensions and the type of wood.

DIMENSIONS

Height: 60 cm/ 23.62 in
Width: 150, 180, 210 cm/ 59.06, 70.87, 82.68 in
Depth: 51 cm/ 20.08 in
Commode thickness: 2 cm/ 0.79 in
Foreparts thickness: 2 cm/ 0.79 in
Back thickness: 2 cm/ 0.79 in
Legs: Ø 1,6 cm powder coated steel, Ø 2 wooden legs
Standard foreparts: solid wood

PACKAGING

Stretch wrap + five-layer cardboard box.
1 piece

PACKAGING DIMENSIONS

Height: 65 cm/ 25.59 in
Width: 155 - 215 cm/ 61.02 - 84.64 in
Depth: 56 cm/ 20.04 in

WEIGHT

Weight: 45-65kg
Packaging: 5 kg

WOOD

Oak, American and European walnut, elm, cherry, maple, ash

CONSTRUCTION

Interior: solid wood
No. of doors: 2, 3
No. of drawer: /

WOOD FINISHES

Available in a variety of natural oil and soap finishes.
More information at artisan.ba/materials

CLEANING INSTRUCTIONS

Please download our material care & cleaning instructions through artisan.ba/materials

AMERICAN WALNUT
A01 Natural soap



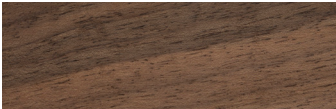
AMERICAN WALNUT
A03 Natural oil



EUROPEAN WALNUT
A01 Natural soap



EUROPEAN WALNUT
A03 Natural oil



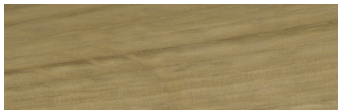
EUROPEAN WALNUT
A04 White oil



EUROPEAN WALNUT WITH KNOTS
A03 Natural oil



OAK
A01 Natural soap



OAK
A03 Natural oil



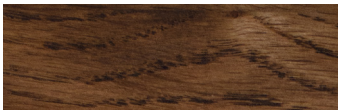
OAK
A3 Loba white oil



OAK
A04 White pigmented oil



OAK
Wenge oil



OAK
AR1 Jahorina pigment



OAK
Rubio black



OAK WITH KNOTS
A03 Natural oil



ELM
A01 Natural soap



ELM
A03 Natural oil



ELM
A04 White pigmented oil



ELM
AR1 Jahorina pigment



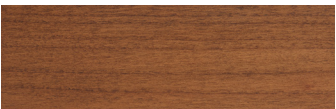
CHERRY
A01 Natural soap



CHERRY
A03 Natural oil



CHERRY
AR4 Dark oil



MAPLE
A01 Natural soap



MAPLE
A04 White pigmented oil



ASH
A04 White pigmented oil



AVAILABLE IN COLORED WOOD.
For more material options please check artisan.ba/materials