



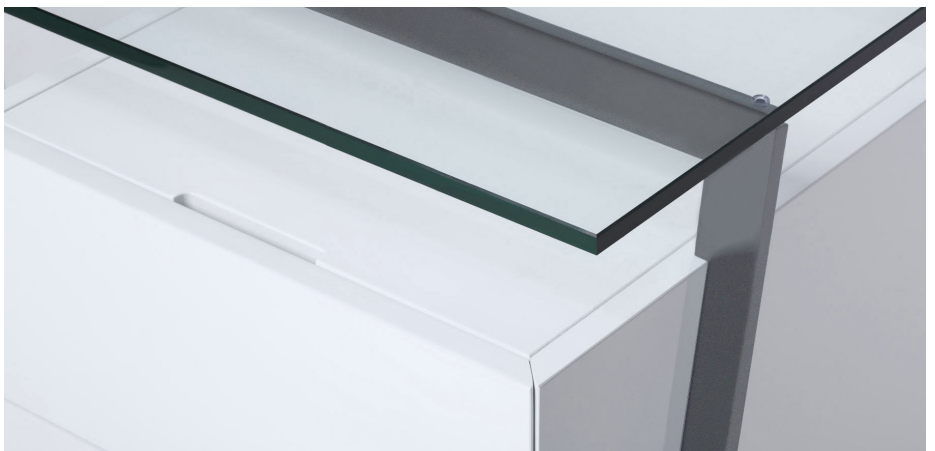
## Homework

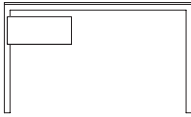


The Homework Desk is an elegant and highly versatile work desk that is available in two sizes. Both desks can be ordered with single, double, or file drawers, and may be configured according to individual needs. Attractive from all sides and made from select materials, Homework is ideal for the home or office where a desk will be on view.

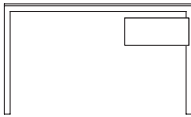
An innovative detail allows the drawers to 'float' below the glass top giving lightness to the design while also providing additional table area. Each drawer includes a concealed cable management compartment large enough to neatly organize multiple cables and accessories.

Homework is precision made with clear glass, chromed or powdercoated steel, premium veneers and ultra high-gloss finish.

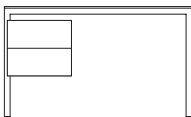




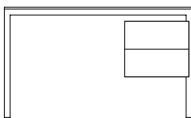
**HOM1SX**  
Homework Desk with Single Drawer Left



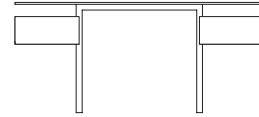
**HOM1XS**  
Homework Desk with Single Drawer Right



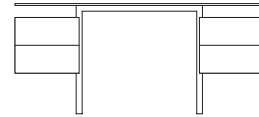
**HOM1DX**  
Homework Desk with Double Drawer Left



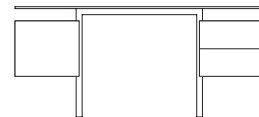
**HOM1XD**  
Homework Desk with Double Drawer Right



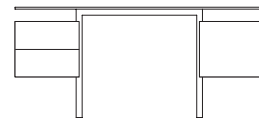
**HOM2SS**  
Homework Desk with 2 Single Drawers



**HOM2DD**  
Homework Desk with 2 Double Drawers



**HOM2FD**  
Homework Desk with File Drawer Left and Double Drawer Right



**HOM2DF**  
Homework Desk with Double Drawer Left and File Drawer Right

L 122cm x D 70cm x H 73cm  
L 48" x D 27 1/2" x H 28 1/2"

L 163cm x D 70cm x H 73cm  
L 64" x D 27 1/2" x H 28 1/2"

Drawers - Walnut / White Oak / Black Oak / White High Gloss Lacquer / Charcoal High Gloss Lacquer  
Legs - Chrome / Gunmetal / White High Gloss Lacquer

**BEN  
SEN**

The Homework Desk is a fresh look at desk design. Notched drawers are cantilevered from the frame creating a floating appearance, yet the result is an extremely sturdy desk. This detail also makes assembly simple, with only a few bolts needed to assemble the whole desk.

Legs are available in either mirror finished chrome or gun metal grey powdercoated steel with clear polycarbonate feet. Drawers are available in either carefully matched wood veneers, or ultra high-gloss polyurethane.

Drawer boxes are made of European birch plywood and equipped with soft-close runners that move silently and prevent slamming. The file drawer can be adjusted easily for both letter and legal size files. The tempered glass top is highly durable and maintains the overall lightness of the design.

A cable management area is easily accessed through a sliding panel, making it easy to get to even in tight spaces.