

---

## Epic Coffee Table - Round, Ø110, Steel

Designed by GamFratesi - 2020

---



---

ITEM NUMBER

33390

DESCRIPTION

Named after the epic poems of ancient times, GamFratesi's Epic Table for GUBI is a sculptural piece of furniture inspired by Greek columns and Roman architecture. Originally made in Italy from travertine stone, the table's new variant marks the first time GamFratesi has worked with steel plates, which are galvanized, lacquered, and then treated with a series of hand-finishing processes to create a unique surface expression for each table. The table's monolithic form remains, now with an industrial expression, in which a new detail can be discovered with every use.

The collection brings personality to private settings and an intriguing sense of weight and tactility to public and hospitality spaces, where its resilient surfaces offer exceptional levels of durability. The varying heights and diameters within the Epic Table Collection mean a single monochromatic table can stand alone or be combined in dynamic clusters of varying material, height and color.

---

## Materials & Finishes

COLOR AND FINISH

Misty Gray, Midnight Black

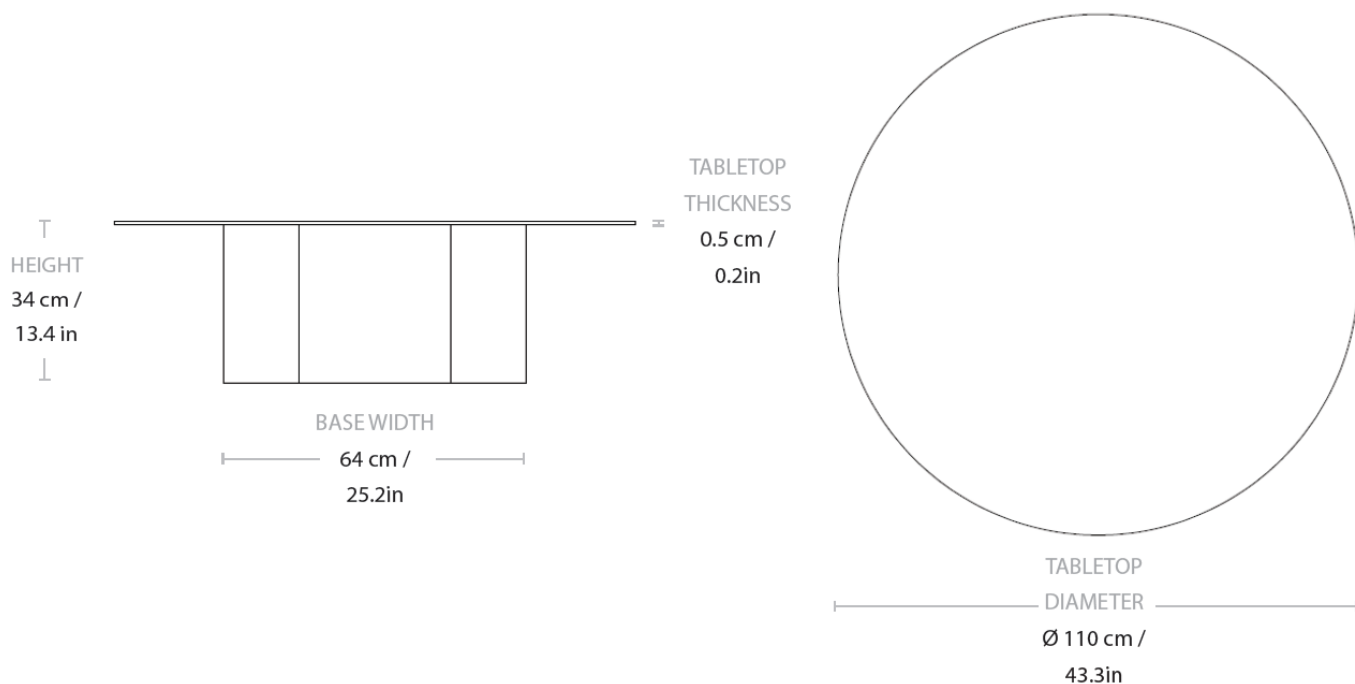


MATERIALS

Stainless steel, Galvanized steel

---

## Dimensions



TABLETOP DIAMETER 110 cm / 43.3 in

BASE WIDTH 64 cm / 25.2 in

HEIGHT 34 cm / 13.4 in

TABLETOP THICKNESS 0.5 cm / 0.2 in

---

## Weight

TOTAL WEIGHT 61.5 kg / 135.6 lbs

BASE WEIGHT 23.5 kg / 51.8 lbs

TABLETOP WEIGHT 38 kg / 83.8 lbs

---

## Packaging

NUMBER OF PARCELS	2
PARCEL 1	
PACKAGING LENGTH	68.5 cm / 26.7 in
PACKAGING WIDTH	56.5 cm / 22.2 in
PACKAGING HEIGHT	36.5 cm / 14.4 in
PACKAGING WEIGHT	2.5 kg / 5.5 lbs
PARCEL 2	
PACKAGING LENGTH	125 cm / 49.2 in
PACKAGING WIDTH	125 cm / 49.2 in
PACKAGING HEIGHT	6 cm / 2.4 in
PACKAGING WEIGHT	11.6 kg / 25.6 lbs
GROSS WEIGHT	75.6 kg / 166.7 lbs

---

SUSTAINABILITY	Parts can be separated and sorted for recycling.
----------------	--

---

KEY FEATURES	Emphasizing the patination of steel, the depth of color and tactility makes each piece unique.
--------------	--

---

---

## Epic Coffee Table - Round, Ø80, Steel

Designed by GamFratesi - 2020

---



---

ITEM NUMBER

33389

DESCRIPTION

Named after the epic poems of ancient times, GamFratesi's Epic Table for GUBI is a sculptural piece of furniture inspired by Greek columns and Roman architecture. Originally made in Italy from travertine stone, the table's new variant marks the first time GamFratesi has worked with steel plates, which are galvanized, lacquered, and then treated with a series of hand-finishing processes to create a unique surface expression for each table. The table's monolithic form remains, now with an industrial expression, in which a new detail can be discovered with every use.

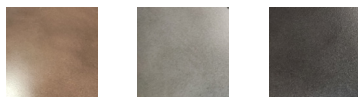
The collection brings personality to private settings and an intriguing sense of weight and tactility to public and hospitality spaces, where its resilient surfaces offer exceptional levels of durability. The varying heights and diameters within the Epic Table Collection mean a single monochromatic table can stand alone or be combined in dynamic clusters of varying material, height and color.

---

## Materials & Finishes

COLOR AND FINISH

Earthy Red, Misty Gray, Midnight Black

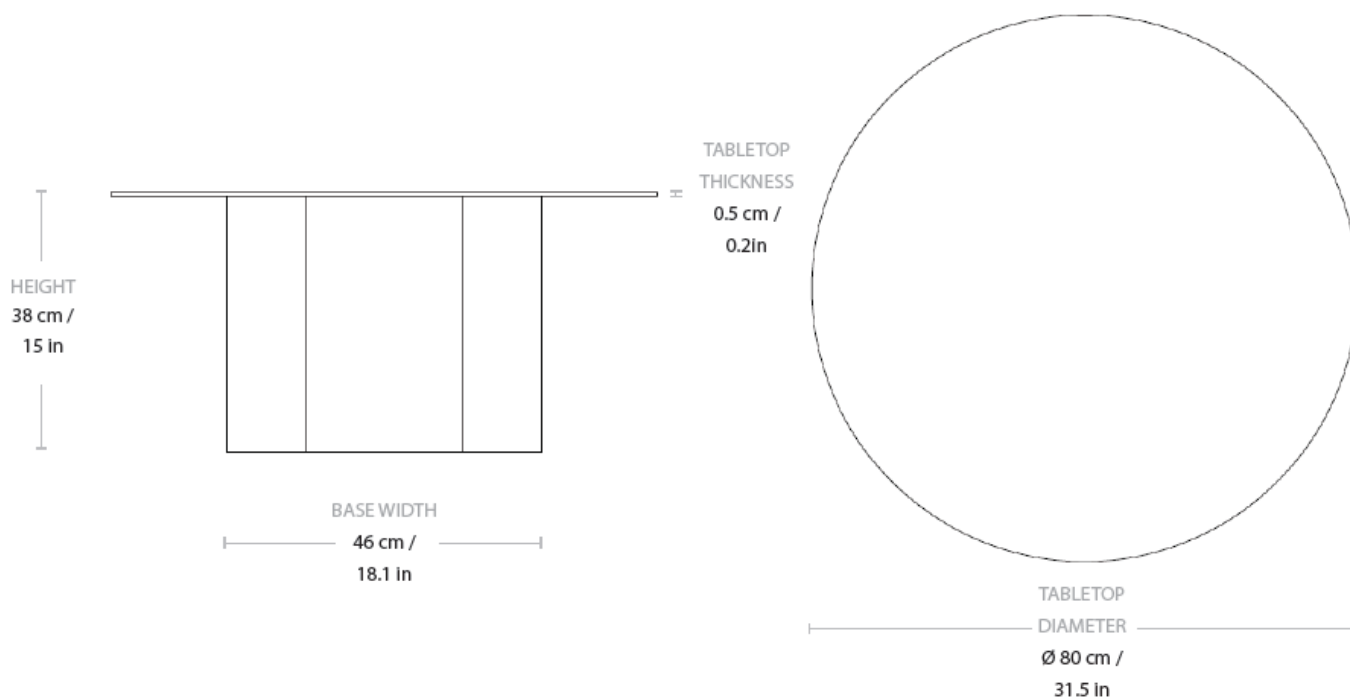


MATERIALS

Stainless steel, Galvanized steel

---

## Dimensions



TABLETOP DIAMETER	80 cm / 31.5 in
BASE WIDTH	46 cm / 18.1 in
HEIGHT	38 cm / 15 in
TABLETOP THICKNESS	0.5 cm / 0.2 in

---

## Weight

TOTAL WEIGHT	34.8 kg / 76.7 lbs
BASE WEIGHT	14.3 kg / 31.5 lbs
TABLETOP WEIGHT	20.5 kg / 45.2 lbs

---

## Packaging

NUMBER OF PARCELS	2
PARCEL 1	
PACKAGING LENGTH	50.4 cm / 19.8 in
PACKAGING WIDTH	41 cm / 16.1 in
PACKAGING HEIGHT	40.5 cm / 15.9 in
PACKAGING WEIGHT	1.7 kg / 3.7 lbs
PARCEL 2	
PACKAGING LENGTH	95 cm / 37.4 in
PACKAGING WIDTH	95 cm / 37.4 in
PACKAGING HEIGHT	6 cm / 2.4 in
PACKAGING WEIGHT	7.8 kg / 17.2 lbs
GROSS WEIGHT	44.3 kg / 97.7 lbs

---

SUSTAINABILITY	Parts can be separated and sorted for recycling.
----------------	--

---

KEY FEATURES	Emphasizing the patination of steel, the depth of color and tactility makes each piece unique.
--------------	--

---

## Epic Coffee Table - Round, Ø60, Steel

Designed by GamFratesi - 2020

---



---

ITEM NUMBER

33388

DESCRIPTION

Named after the epic poems of ancient times, GamFratesi's Epic Table for GUBI is a sculptural piece of furniture inspired by Greek columns and Roman architecture. Originally made in Italy from travertine stone, the table's new variant marks the first time GamFratesi has worked with steel plates, which are galvanized, lacquered, and then treated with a series of hand-finishing processes to create a unique surface expression for each table. The table's monolithic form remains, now with an industrial expression, in which a new detail can be discovered with every use.

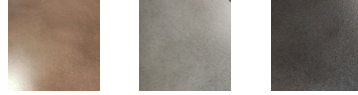
The collection brings personality to private settings and an intriguing sense of weight and tactility to public and hospitality spaces, where its resilient surfaces offer exceptional levels of durability. The varying heights and diameters within the Epic Table Collection mean a single monochromatic table can stand alone or be combined in dynamic clusters of varying material, height and color.

---

## Materials & Finishes

COLOR AND FINISH

Earthy Red, Misty Gray, Midnight Black

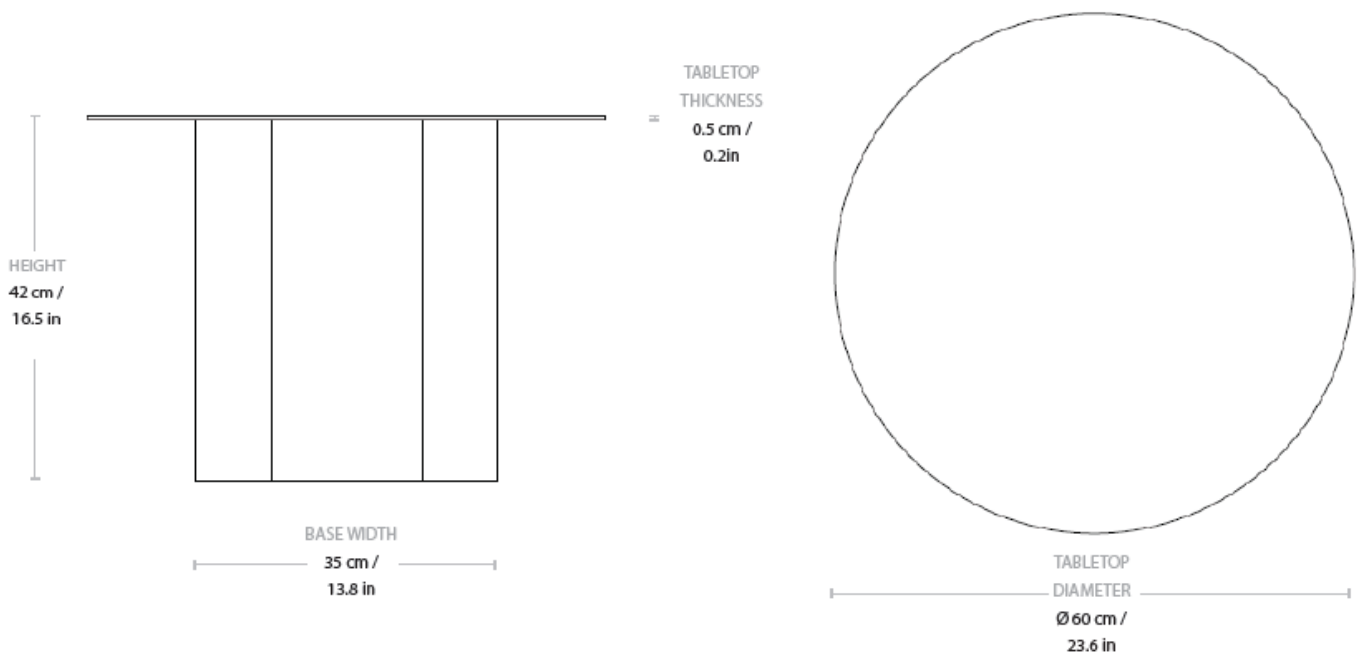


MATERIALS

Stainless steel, Galvanized steel

---

## Dimensions



TABLETOP DIAMETER	60 cm / 23.6 in
BASE WIDTH	35 cm / 13.8 in
HEIGHT	42 cm / 16.5 in
TABLETOP THICKNESS	0.5 cm / 0.2 in

---

## Weight

TOTAL WEIGHT	22 kg / 48.5 lbs
BASE WEIGHT	10 kg / 22 lbs
TABLETOP WEIGHT	12 kg / 26.5 lbs

---



## Packaging

NUMBER OF PARCELS	2
PARCEL 1	
PACKAGING LENGTH	39.4 cm / 15.5 in
PACKAGING WIDTH	31.3 cm / 12.3 in
PACKAGING HEIGHT	44.5 cm / 17.5 in
PACKAGING WEIGHT	1 kg / 2.2 lbs
PARCEL 2	
PACKAGING LENGTH	75 cm / 29.5 in
PACKAGING WIDTH	75 cm / 29.5 in
PACKAGING HEIGHT	6 cm / 2.4 in
PACKAGING WEIGHT	5.9 kg / 13 lbs
GROSS WEIGHT	50.9 kg / 112.2 lbs

---

SUSTAINABILITY	Parts can be separated and sorted for recycling.
----------------	--

---

KEY FEATURES	Emphasizing the patination of steel, the depth of color and tactility makes each piece unique.
--------------	--

---