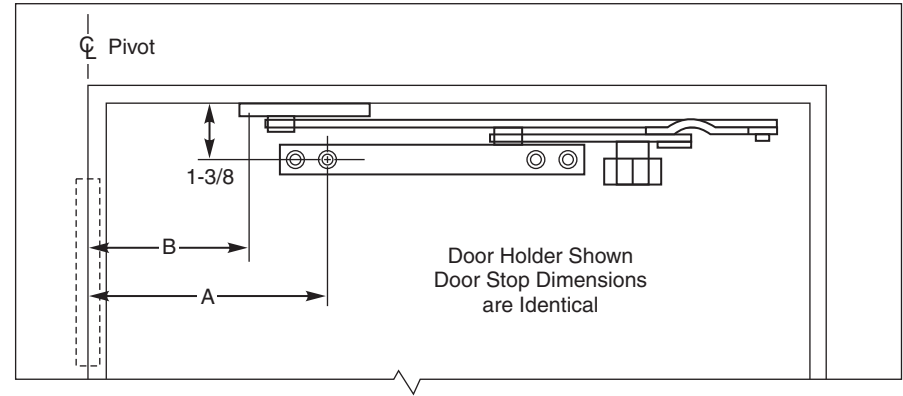


5. Be sure that door bracket is horizontal and holes are located on door 1-3/8" down from stop strip as shown. Drill 3/8" diameter hole for second sex bolt and install door bracket.



**NOTES:**

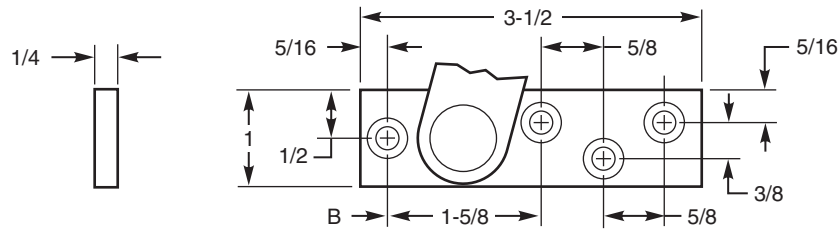
- All hollow metal doors and frames should be properly reinforced with 3/16" min. thickness x 12" min. length reinforcement plates.
- All drilling and tapping to be done by field men.
- Sex bolts furnished will be 3/8" diameter and will extend into door bracket.
- Suggest mounting door stop or holder first and then other hardware to clear. Contact factory if interference results with other hardware.
- Left hand shown - right hand opposite. (Note hole pattern in jamb bracket.)
- All dimensions are given in inches.
- Non-handed, reversible.

**DOOR BRACKET COVER:** If cover is provided, snap on to door bracket after screws have been tightened into sex bolts.

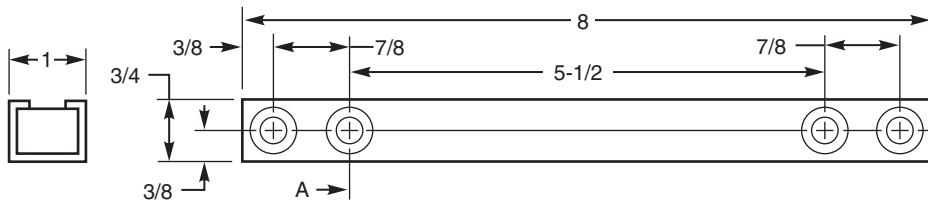
**CONTROL KNOB:** Turn control knob one half turn for hold open or stop only operation.

**INSTALLATION INSTRUCTIONS**

1. Select and determine degree of opening, hold open or dead stop from chart on back side of page.
2. Locate "A" and "B" dimensions on door and frame.
3. Install jamb bracket on stop strip.



4. Position door bracket on door with shock spring located towards pivot. Drill 3/8" diameter hole for first sex bolt as shown for dimension "A".



**Screw Details**

Type	Qty.	Description
Door Bracket	4	1/4-20 x 1-1/4" FHMS and 3/8" Dia. Sex Bolts
Jamb Bracket	4	1/4-20 x 3/4" FHMS or #14 x 1-1/2" FHWS

**No. 8HD Series  
 Heavy Duty Surface Mounted  
 Door Stops and Holders**



TEMPLATE NUMBER	SHEET	REV	DATE
<b>OH80050A</b>	<b>1 of 2</b>	<b>4</b>	<b>02/22</b>

**No. 8HD Series Heavy Duty Surface Mounted Door Stops and Holders**

1. See other side for installation instructions.
2. Select proper dimensions noted below.
3. All drilling and tapping to be done in field.
4. All dimensions given in inches.
5. When using center hung pivots, check pivot manufacturer's compatibility prior to specifying.

For single acting doors only.  
Reversible, non-handed.

H.O. = Hold Open for Holders and Opening for Stops.  
D.S. = Dead Stop for Both Holders and Stops.

1¼ - 2% Butts & ¼ Offset Pivot	Device Number		Degree	85°				90°				95°				100°				105°				110°			
	H.O.	Stop		H.O.		D.S.		H.O.		D.S.		H.O.		D.S.		H.O.		D.S.		H.O.		D.S.		H.O.		D.S.	
			Door Opening	A	B	A	B	A	B	A	B	A	B	A	B	A	B	A	B	A	B	A	B	A	B	A	B
	8-226	8-236	27 <sup>1</sup> / <sub>16</sub> - 32 <sup>1</sup> / <sub>2</sub>	10 <sup>7</sup> / <sub>8</sub>	8 <sup>1</sup> / <sub>8</sub>	11 <sup>15</sup> / <sub>16</sub>	9 <sup>3</sup> / <sub>16</sub>	10 <sup>5</sup> / <sub>16</sub>	9 <sup>9</sup> / <sub>16</sub>	11 <sup>3</sup> / <sub>8</sub>	8 <sup>5</sup> / <sub>8</sub>	9 <sup>7</sup> / <sub>8</sub>	7 <sup>1</sup> / <sub>8</sub>	10 <sup>7</sup> / <sub>8</sub>	8 <sup>1</sup> / <sub>8</sub>	9 <sup>2</sup> / <sub>2</sub>	6 <sup>3</sup> / <sub>4</sub>	10 <sup>1</sup> / <sub>2</sub>	7 <sup>3</sup> / <sub>4</sub>	9 <sup>1</sup> / <sub>8</sub>	6 <sup>3</sup> / <sub>8</sub>	10 <sup>1</sup> / <sub>8</sub>	7 <sup>3</sup> / <sub>8</sub>	8 <sup>13</sup> / <sub>16</sub>	6 <sup>1</sup> / <sub>16</sub>	9 <sup>13</sup> / <sub>16</sub>	7 <sup>1</sup> / <sub>16</sub>
	8-326	8-336	32 <sup>9</sup> / <sub>16</sub> - 38 <sup>3</sup> / <sub>4</sub>	15 <sup>1</sup> / <sub>16</sub>	10 <sup>13</sup> / <sub>16</sub>	16	11 <sup>3</sup> / <sub>4</sub>	14 <sup>5</sup> / <sub>16</sub>	10 <sup>1</sup> / <sub>16</sub>	15 <sup>5</sup> / <sub>16</sub>	11 <sup>1</sup> / <sub>16</sub>	13 <sup>3</sup> / <sub>4</sub>	9 <sup>1</sup> / <sub>2</sub>	14 <sup>3</sup> / <sub>4</sub>	10 <sup>1</sup> / <sub>2</sub>	13 <sup>1</sup> / <sub>4</sub>	9	14 <sup>1</sup> / <sub>4</sub>	10	12 <sup>3</sup> / <sub>4</sub>	8 <sup>1</sup> / <sub>2</sub>	13 <sup>3</sup> / <sub>4</sub>	9 <sup>1</sup> / <sub>2</sub>	12 <sup>7</sup> / <sub>16</sub>	8 <sup>3</sup> / <sub>16</sub>	13 <sup>3</sup> / <sub>8</sub>	9 <sup>1</sup> / <sub>8</sub>
	8-426	8-436	38 <sup>13</sup> / <sub>16</sub> - 42 <sup>1</sup> / <sub>2</sub>	19 <sup>3</sup> / <sub>4</sub>	13 <sup>11</sup> / <sub>16</sub>	20 <sup>3</sup> / <sub>4</sub>	14 <sup>11</sup> / <sub>16</sub>	18 <sup>15</sup> / <sub>16</sub>	12 <sup>7</sup> / <sub>8</sub>	20 <sup>1</sup> / <sub>16</sub>	14	18 <sup>3</sup> / <sub>16</sub>	12 <sup>1</sup> / <sub>8</sub>	19 <sup>3</sup> / <sub>16</sub>	13 <sup>1</sup> / <sub>8</sub>	17 <sup>9</sup> / <sub>16</sub>	11 <sup>1</sup> / <sub>2</sub>	18 <sup>1</sup> / <sub>2</sub>	12 <sup>7</sup> / <sub>16</sub>	17 <sup>1</sup> / <sub>16</sub>	11	17 <sup>15</sup> / <sub>16</sub>	11 <sup>7</sup> / <sub>8</sub>	16 <sup>9</sup> / <sub>16</sub>	10 <sup>1</sup> / <sub>2</sub>	17 <sup>7</sup> / <sub>16</sub>	11 <sup>3</sup> / <sub>8</sub>
	8-526	8-536	42 <sup>9</sup> / <sub>16</sub> - 48	22 <sup>7</sup> / <sub>16</sub>	15 <sup>7</sup> / <sub>16</sub>	23 <sup>3</sup> / <sub>8</sub>	16 <sup>3</sup> / <sub>8</sub>	21 <sup>1</sup> / <sub>2</sub>	14 <sup>1</sup> / <sub>2</sub>	22 <sup>7</sup> / <sub>16</sub>	15 <sup>7</sup> / <sub>16</sub>	20 <sup>11</sup> / <sub>16</sub>	13 <sup>11</sup> / <sub>16</sub>	21 <sup>5</sup> / <sub>8</sub>	14 <sup>5</sup> / <sub>8</sub>	20	13	20 <sup>7</sup> / <sub>8</sub>	13 <sup>7</sup> / <sub>8</sub>	19 <sup>3</sup> / <sub>8</sub>	12 <sup>3</sup> / <sub>8</sub>	20 <sup>5</sup> / <sub>16</sub>	13 <sup>5</sup> / <sub>16</sub>	18 <sup>7</sup> / <sub>8</sub>	11 <sup>7</sup> / <sub>8</sub>	19 <sup>3</sup> / <sub>4</sub>	12 <sup>3</sup> / <sub>4</sub>

1¼ - 2% Center Hung	Device Number		Degree	85°				90°				95°				100°				105°				110°			
	H.O.	Stop		H.O.		D.S.		H.O.		D.S.		H.O.		D.S.		H.O.		D.S.		H.O.		D.S.		H.O.		D.S.	
			Door Opening	A	B	A	B	A	B	A	B	A	B	A	B	A	B	A	B	A	B	A	B	A	B	A	B
	8-226	8-236	27 <sup>9</sup> / <sub>16</sub> - 35	11 <sup>11</sup> / <sub>16</sub>	8 <sup>15</sup> / <sub>16</sub>	12 <sup>9</sup> / <sub>16</sub>	9 <sup>13</sup> / <sub>16</sub>	11 <sup>3</sup> / <sub>16</sub>	8 <sup>7</sup> / <sub>16</sub>	12	9 <sup>1</sup> / <sub>4</sub>	10 <sup>11</sup> / <sub>16</sub>	7 <sup>15</sup> / <sub>16</sub>	11 <sup>1</sup> / <sub>2</sub>	8 <sup>3</sup> / <sub>4</sub>	10 <sup>5</sup> / <sub>16</sub>	7 <sup>9</sup> / <sub>16</sub>	11 <sup>1</sup> / <sub>16</sub>	8 <sup>5</sup> / <sub>16</sub>	9 <sup>15</sup> / <sub>16</sub>	7 <sup>3</sup> / <sub>16</sub>	10 <sup>11</sup> / <sub>16</sub>	7 <sup>15</sup> / <sub>16</sub>	9 <sup>5</sup> / <sub>8</sub>	6 <sup>7</sup> / <sub>8</sub>	10 <sup>5</sup> / <sub>16</sub>	7 <sup>9</sup> / <sub>16</sub>
	8-326	8-336	35 <sup>1</sup> / <sub>16</sub> - 41 <sup>1</sup> / <sub>2</sub>	15 <sup>3</sup> / <sub>4</sub>	11 <sup>1</sup> / <sub>2</sub>	16 <sup>5</sup> / <sub>8</sub>	12 <sup>3</sup> / <sub>8</sub>	15 <sup>1</sup> / <sub>16</sub>	10 <sup>13</sup> / <sub>16</sub>	15 <sup>15</sup> / <sub>16</sub>	11 <sup>11</sup> / <sub>16</sub>	14 <sup>1</sup> / <sub>2</sub>	10 <sup>1</sup> / <sub>4</sub>	15 <sup>5</sup> / <sub>16</sub>	11 <sup>1</sup> / <sub>16</sub>	13 <sup>15</sup> / <sub>16</sub>	9 <sup>11</sup> / <sub>16</sub>	14 <sup>3</sup> / <sub>4</sub>	10 <sup>1</sup> / <sub>2</sub>	13 <sup>1</sup> / <sub>2</sub>	9 <sup>1</sup> / <sub>4</sub>	14 <sup>1</sup> / <sub>4</sub>	10	13 <sup>1</sup> / <sub>16</sub>	8 <sup>13</sup> / <sub>16</sub>	13 <sup>13</sup> / <sub>16</sub>	9 <sup>9</sup> / <sub>16</sub>
	8-426	8-436	41 <sup>1</sup> / <sub>16</sub> - 45	20 <sup>3</sup> / <sub>8</sub>	14 <sup>5</sup> / <sub>16</sub>	20 <sup>1</sup> / <sub>4</sub>	15 <sup>3</sup> / <sub>16</sub>	19 <sup>9</sup> / <sub>16</sub>	13 <sup>1</sup> / <sub>2</sub>	20 <sup>7</sup> / <sub>16</sub>	14 <sup>3</sup> / <sub>8</sub>	18 <sup>7</sup> / <sub>8</sub>	12 <sup>13</sup> / <sub>16</sub>	19 <sup>5</sup> / <sub>8</sub>	13 <sup>9</sup> / <sub>16</sub>	18 <sup>3</sup> / <sub>16</sub>	12 <sup>1</sup> / <sub>8</sub>	19	12 <sup>15</sup> / <sub>16</sub>	17 <sup>5</sup> / <sub>8</sub>	11 <sup>9</sup> / <sub>16</sub>	18 <sup>3</sup> / <sub>8</sub>	12 <sup>5</sup> / <sub>16</sub>	17 <sup>1</sup> / <sub>8</sub>	11 <sup>1</sup> / <sub>16</sub>	7 <sup>7</sup> / <sub>8</sub>	11 <sup>13</sup> / <sub>16</sub>
	8-526	8-536	45 <sup>1</sup> / <sub>16</sub> - 48	23 <sup>1</sup> / <sub>16</sub>	16 <sup>1</sup> / <sub>16</sub>	23 <sup>15</sup> / <sub>16</sub>	16 <sup>15</sup> / <sub>16</sub>	22 <sup>1</sup> / <sub>8</sub>	15 <sup>1</sup> / <sub>8</sub>	22 <sup>15</sup> / <sub>16</sub>	15 <sup>15</sup> / <sub>16</sub>	21 <sup>5</sup> / <sub>16</sub>	14 <sup>5</sup> / <sub>16</sub>	22 <sup>1</sup> / <sub>8</sub>	15 <sup>1</sup> / <sub>8</sub>	20 <sup>5</sup> / <sub>8</sub>	13 <sup>5</sup> / <sub>8</sub>	21 <sup>3</sup> / <sub>8</sub>	14 <sup>3</sup> / <sub>8</sub>	20	13	20 <sup>3</sup> / <sub>4</sub>	13 <sup>3</sup> / <sub>4</sub>	9 <sup>7</sup> / <sub>16</sub>	12 <sup>7</sup> / <sub>16</sub>	20 <sup>3</sup> / <sub>16</sub>	13 <sup>3</sup> / <sub>16</sub>

**No. 8HD Series  
Heavy Duty Surface Mounted  
Door Stops and Holders**



TEMPLATE NUMBER	SHEET	REV	DATE
<b>OH80050B</b>	<b>2 of 2</b>	<b>4</b>	<b>02/22</b>

Approved 2022-05-02