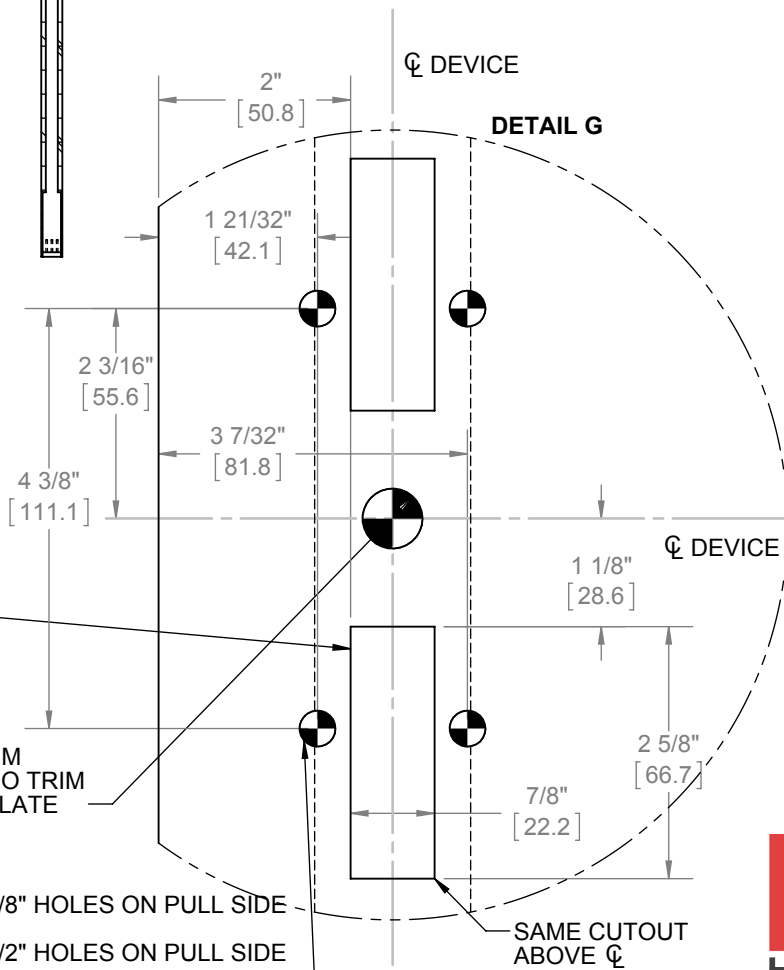
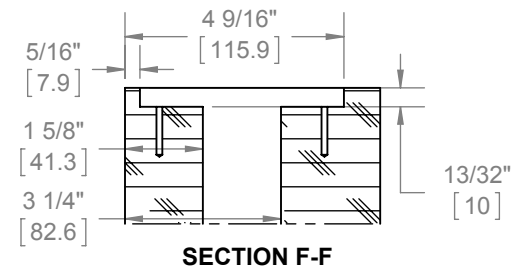
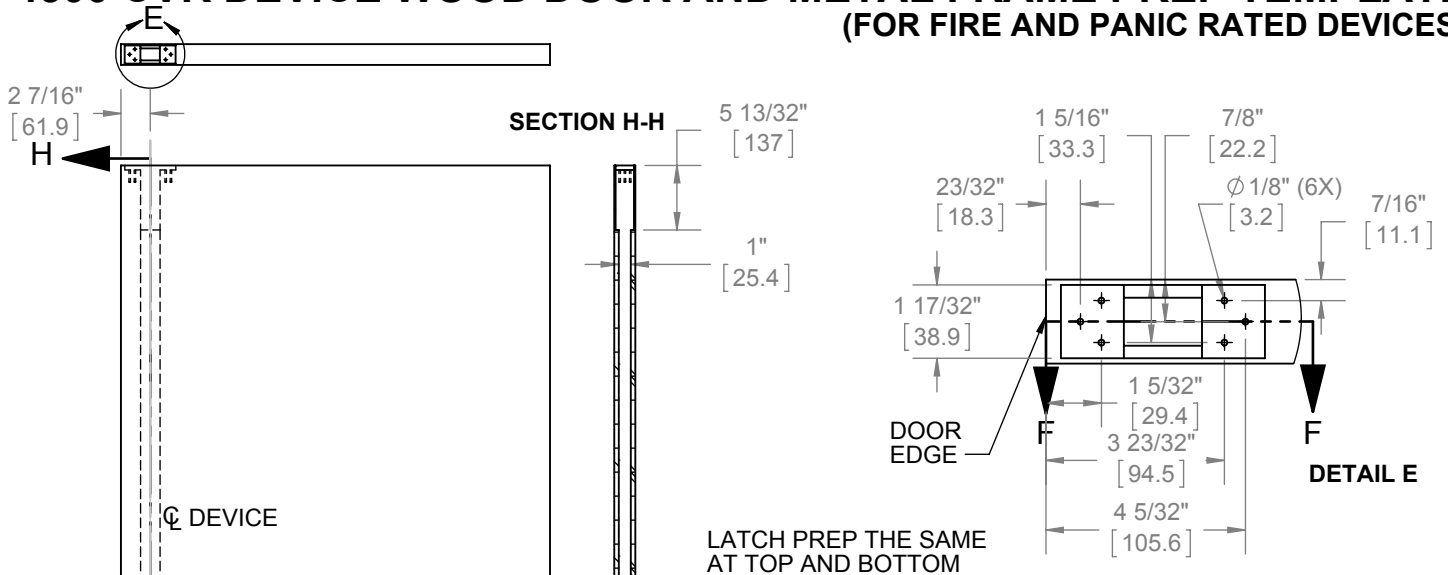


# 4500 CVR DEVICE WOOD DOOR AND METAL FRAME PREP TEMPLATE (FOR FIRE AND PANIC RATED DEVICES)



(4X)

THROUGH BOLTING WITHOUT TRIM:  
DRILL 5/16" CLEARANCE HOLES ON PUSH SIDE, 3/8" HOLES ON PULL SIDE  
USING TRIM:  
DRILL 5/16" CLEARANCE HOLES ON PUSH SIDE, 1/2" HOLES ON PULL SIDE  
DO NOT SURFACE MOUNT EXIT DEVICE



DRAWING NO: T-ED01290

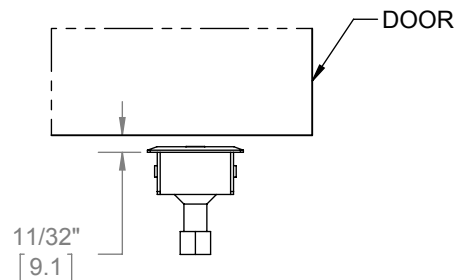
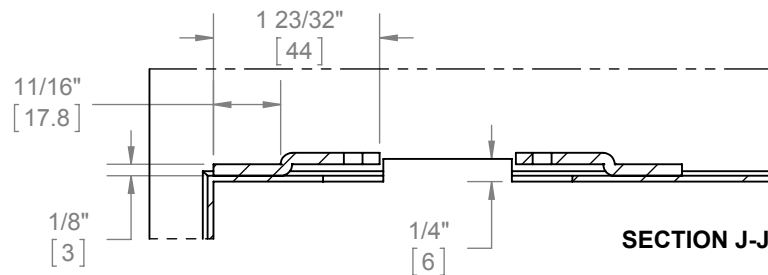
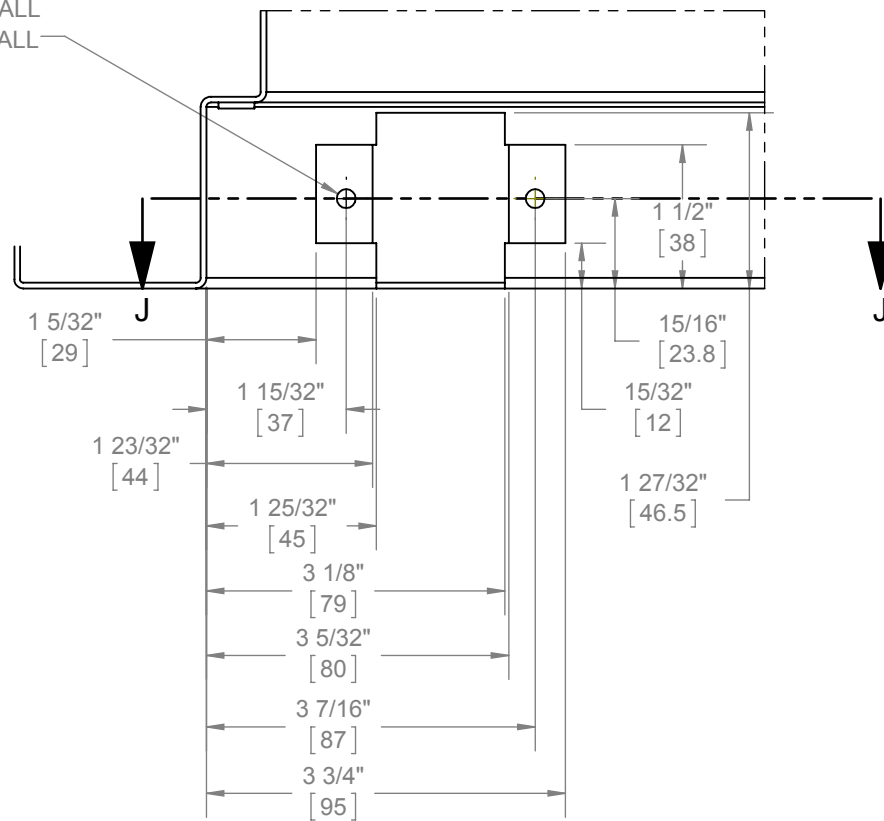
REV: 6 REV DATE: 8/12/14

SHEET 1 OF 2

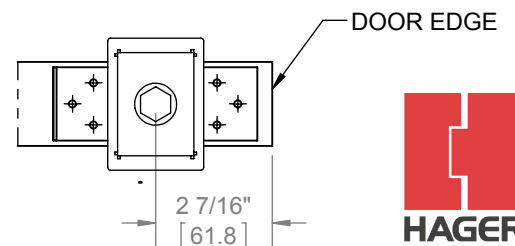
**HAGER COMPANIES** 139 Victor Street, St. Louis, MO 63104 - (800) 325-9995 - Fax (800) 782-0149

# 4500 CVR DEVICE WOOD DOOR AND METAL FRAME PREP TEMPLATE (FOR FIRE AND PANIC RATED DEVICES)

Ø 5/32" [4.2] THRU ALL  
M5X0.8 - 6H THRU ALL  
(2X)



BOTTOM STRIKE IS PLACED INTO  
FINISHED FLOOR



DRAWING NO: T-ED01290

REV: 6 REV DATE: 8/12/14

SHEET 2 OF 2

**HAGER COMPANIES** 139 Victor Street, St. Louis, MO 63104 - (800) 325-9995 - Fax (800) 782-0149

# 4500 CVR DEVICE METAL DOOR AND FRAME PREP TEMPLATE (FOR FIRE AND PANIC RATED DEVICES)

## (4X) SURFACE MOUNTING:

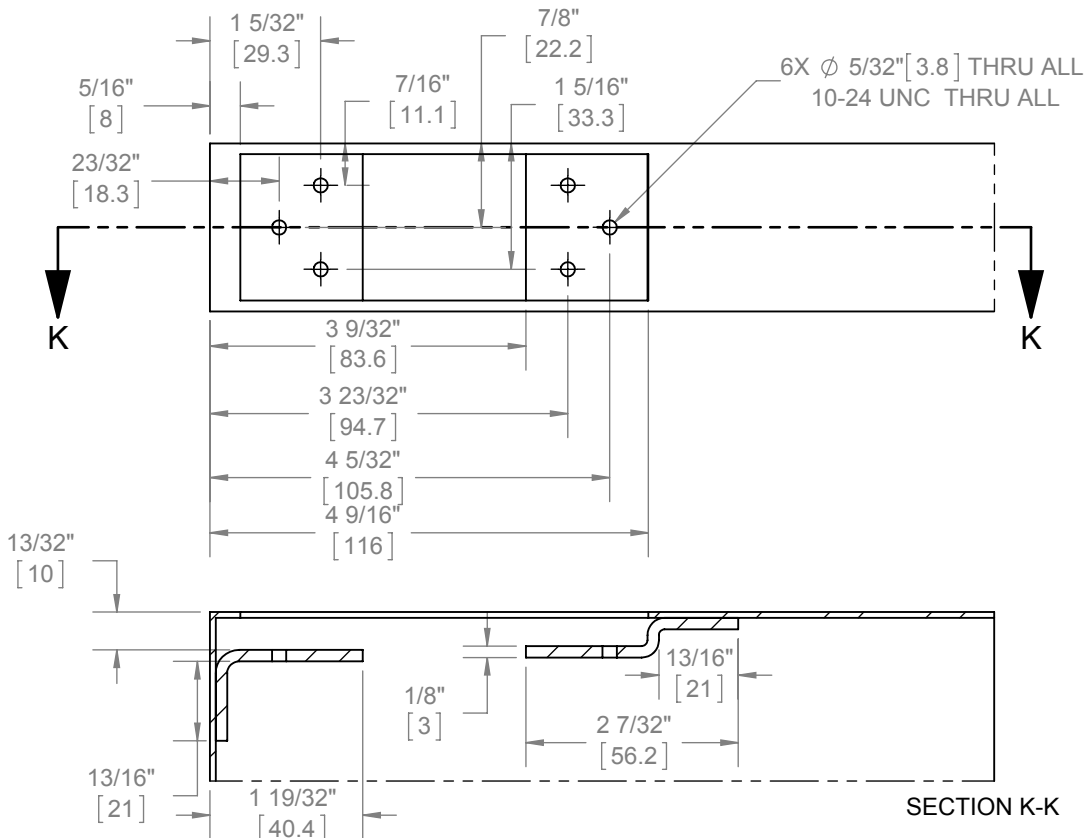
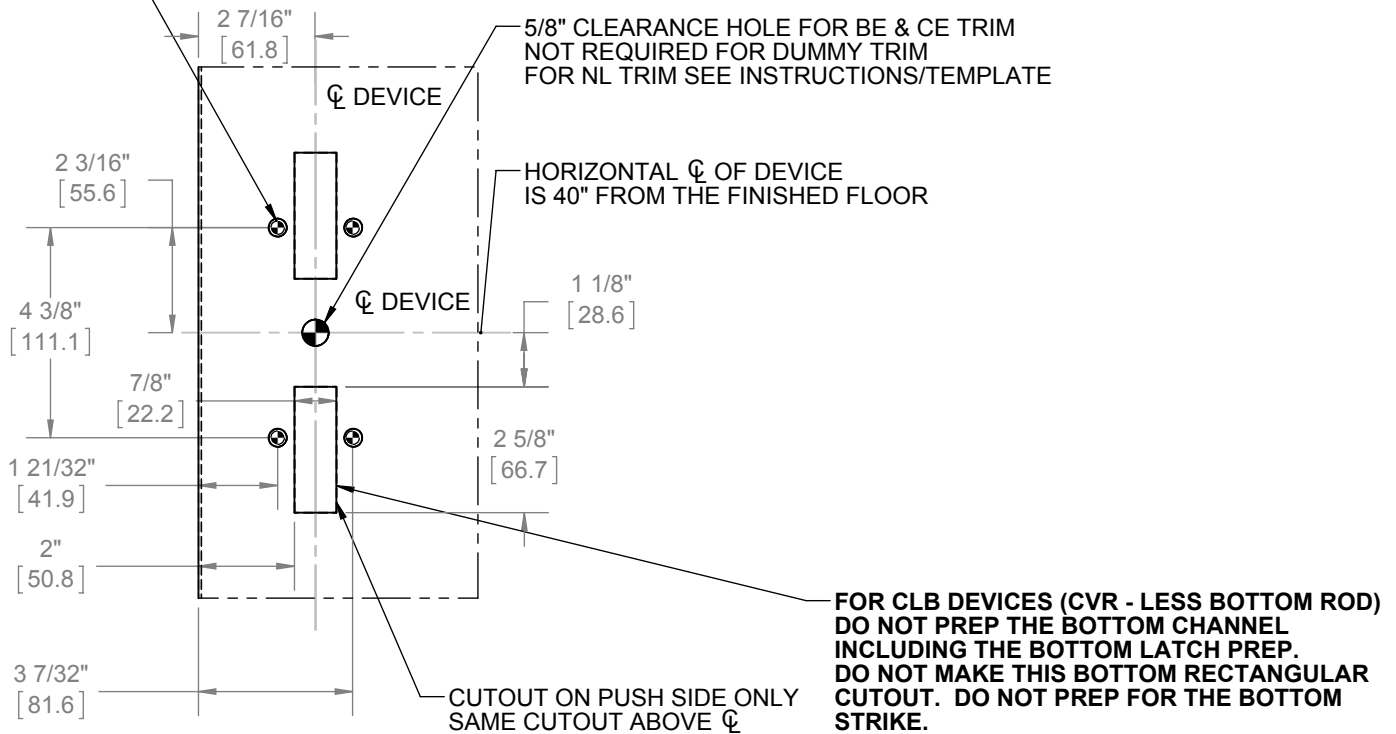
DRILL/TAP FOR 1/4-20 MACHINE SCREWS

## SEXBOLTS:

DRILL 5/16" CLEARANCE HOLES ON PUSH SIDE, 3/8" HOLES ON PULL SIDE

## TRIM:

DRILL 5/16" CLEARANCE HOLES ON PUSH SIDE, 1/2" HOLES ON PULL SIDE



LATCH BRACKET PREP THE  
SAME AT BOTTOM AND TOP



DRAWING NO: T-ED01284

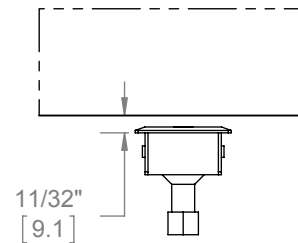
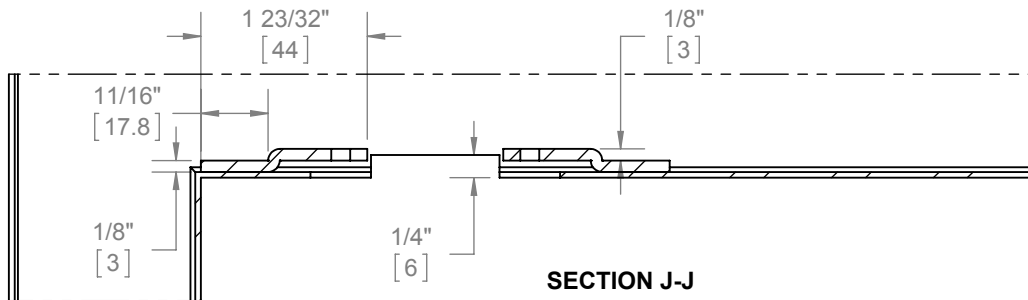
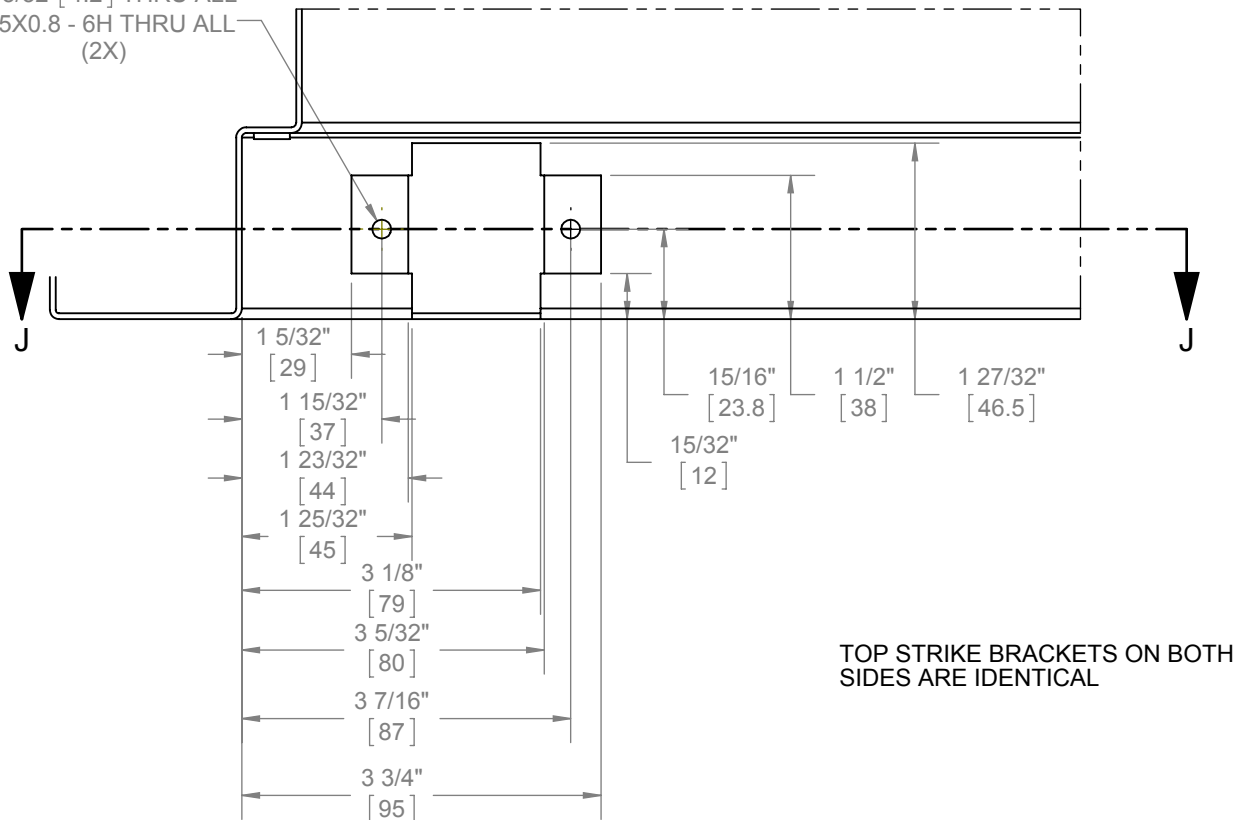
REV: 6 REV DATE: 8/12/14

SHEET 1 OF 2

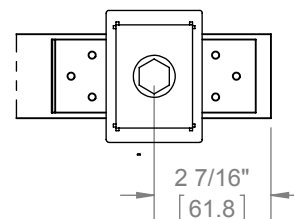
**HAGER COMPANIES** 139 Victor Street, St. Louis, MO 63104 - (800) 325-9995 - Fax (800) 782-0149

# 4500 CVR DEVICE METAL DOOR AND FRAME PREP TEMPLATE (FOR FIRE AND PANIC RATED DEVICES)

Ø 5/32" [4.2] THRU ALL  
M5X0.8 - 6H THRU ALL  
(2X)



BOTTOM STRIKE IS PLACED INTO  
FINISHED FLOOR



DRAWING NO: T-ED01284

REV: 6 REV DATE: 8/12/14

SHEET 2 OF 2

**HAGER COMPANIES** 139 Victor Street, St. Louis, MO 63104 - (800) 325-9995 - Fax (800) 782-0149