

3400 Series



Hager 3400 Series Grade 1 lock is designed and engineered to withstand the most abusive environments. We've categorized it 'extra heavy duty' and you can rest assured that it has been tested against heavy use, impact, strength, resistance, and abuse. We're so confident in our 3400 Series lock, it's backed by a lifetime warranty. The exceptional quality of our 3400 Series lock has made it incredibly successful in application after application across the country and around the globe.



**3400 SERIES - HOW TO ORDER**

3453 2-³/₄" US26D		US26	WTN	SCC	KD	ASA	TW
Function 10 - Passage 17 - Single Dummy 40 - Privacy 50 - Entry/Office 53 - Entry 70 - Classroom 73 - Corridor 80 - Storeroom 95 - Intruder Classroom		Finish US3 US4 US10 US10B US26 US26D	Interior Finish (If Different)	Conventional Keyway SCC - Schlage C AR1 - Arrow C60 - Corbin 60 C67 - Corbin 67 C77 - Corbin 77 CL4 - Corbin L4 SCE - Schlage E SCF - Schlage F H1 - Hager 1 H2 - Hager 2 H3 - Hager 3 KW1 - Kwikset RD1 - Russwin D1 SGT - Sargent LA YAP - Yale E1R (Para) YGA - Yale GA WE - Weiser E NC - No Cylinder (SFIC and LFIC Only)		Strike ASA (Standard) Full RC Full TEE	Options TW - Tactile Warning LL - Leadlined EL24 - Fail Safe 24 Volt EL12 - Fail Safe 12 Volt EU24 - Fail Secure 24 Volt EU12 - Fail Secure 12 Volt RX - Request to Exit ELRX24 - Fail Safe 24 Volt with Request to Exit ELRX12 - Fail Safe 12 Volt with Request to Exit EURX24 - Fail Secure 24 Volt with Request to Exit EURX12 - Fail Secure 12 Volt with Request to Exit 6PKEY - 6-pin Keyed 7PKEY - 7-pin Keyed (Hager Only) SFIC* - Small Format Interchangeable Core Prep LFIC** - Large Format Interchangeable Core Prep (Leverset Only) ANTI - Antimicrobial Coating (26D only)
Backset/Faceplate 2-3/4" (70 mm), SC (Standard) 2-3/4" (70 mm), RC 2-3/8" (60 mm), SC 2-3/8" (60 mm), RC			Lever Style ARC - Archer Lever AUG - August Lever WTN - Withnell Lever	Keying KA - Keyed Alike KD - Keyed Different MK - Master Key CMK - Construction Master Key SK - Customer Specified Keying OBC - "0" Bitted Cylinder 1BC - "1" Bitted Cylinder			
Product Group 34 - Cylindrical, Grade 1							

Notes:

1. If masterkeyed, include completed master key form with order (available on page 88 or www.hagerco.com).
2. For additional keying information, please refer to cylinder, core, and keying section of catalog (page 73).

* Small format interchangeable core sold separately. Available in Best Keyways (A Standard) or Hager Keyways (optional).










** Large format interchangeable core sold separately. Available in Schlage C Keyway only.

**Ordering example: 3453 2-3/4" US26D WTN NC ASA SFIC
: 3453 2-3/4" US26D WTN NC ASA LFIC**





3400 SERIES - FUNCTION CHART

	Function	Function No.	Function Description	ANSI No.
Non-Keyed				
	Passage	10	Latchbolt operated by lever from either side at all times.	F75
	Dummy - Single	17	Pull one side, no mechanical operation.	-
	Privacy	40	Latchbolt operated by lever from either side. Outside lever is locked by push button inside and unlocked by emergency release outside, operating inside lever or closing door.	F76A
Keyed				
	Entry/Office	50	Deadlocking latchbolt operated by lever from either side except when outside lever is locked by push button on inside lever. When outside lever is locked, operating key in outside lever or operating inside lever unlocks push button. Closing door does not release push button.	F82A
	Entry	53	Deadlocking latchbolt by lever either side, except when turn button inside locks outside lever. Pushing turn button in locks outside lever, requiring use of key outside to unlock. (Lever handle is freewheeling in locked position.) Turning inside lever unlocks outside lever. Pushing in and turning button locks outside lever, requiring key at all times. Turning inside lever does not unlock outside lever until button is manually turned to unlocked position. Inside lever always operates latchbolt.	F109
	Classroom	70	Deadlocking latchbolt operated by lever from either side except when outside lever is locked from outside by key. When outside lever is locked, latchbolt is operated by inside lever.	F84
	Corridor	73	Deadlocking latchbolt operated by lever from either side except when outside lever is locked by key in outside lever or by push button on inside. Key in outside lever locks or unlocks outside lever. Operating inside lever releases push button. Closing door releases push button. Inside lever always operates latchbolt.	F90
	Storeroom	80	Deadlocking latchbolt operated by key in outside lever, or by operating inside lever. Outside lever is always locked. Inside lever is always unlocked.	F86
	Intruder Classroom*	95	Deadlocking latchbolt operated by lever from either side. Key either inside or outside locks or unlocks outside lever. Inside lever always operates latchbolt.	F110

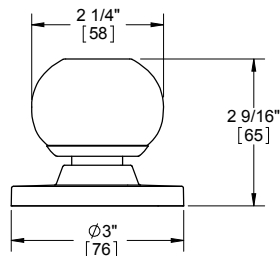
Notes: *Intruder Classroom includes locking direction indicator stamped on the inside rose standard.



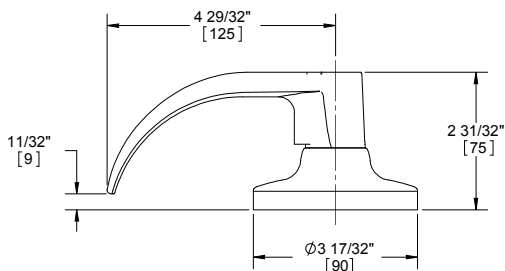


3400 SERIES - LEVER OPTIONS

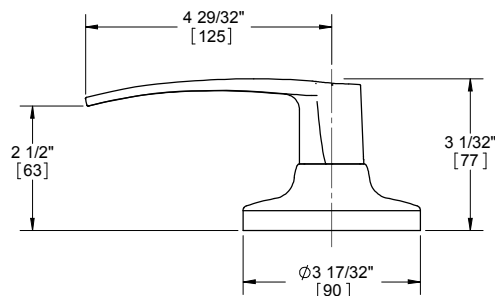
APOLLO KNOB



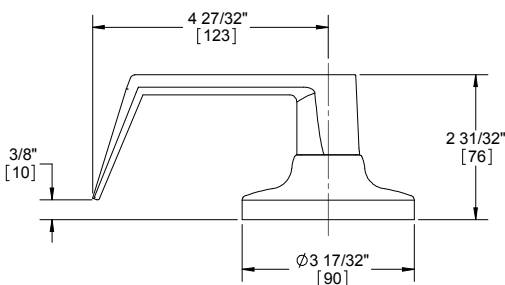
ARCHER LEVER



AUGUST LEVER



WITHNELL LEVER



Optional tactile warning available on all lever styles (only outside lever will include raised surfaces unless otherwise specified).





3400 SERIES - GRADE 1 CYLINDRICAL - HEAVY DUTY

WARRANTY

Lifetime warranty

FEATURES

- Heavy duty commercial, industrial, institutional
- No exposed mounting screws
- Non-handed
- Conventional cylinder, Small Format Interchangeable Core, and Large Format Interchangeable Core option available

Certifications:

- BHMA Certified ANSI A156.2 Series 4000 Grade 1
- ADA Compliant ANSI A117.1 Accessibility Code (levers only)
- ANSI A250.13 Severe Windstorm Resistant Component
- UL/cUL Listed for all functions up to 3 hours for "A" label doors
- UL10C Positive Pressure Rated
- UL10B Neutral Pressure Rated

Lever Options:

Apollo knob; Archer, August, Withnell levers

Options:

- Lead lined (leversets only)
- Tactile warning (levers only)
- Antimicrobial coating (26D finish only)
- Split finish
- Additional latchbolts and strikes available

SPECIFICATIONS

Standard Door Prep:

- 2-1/8" (54 mm) diameter (bore)
- Latch hole: 1" (25 mm) diameter (cross bore)

Exposed Trim:

- Knobs: Wrought brass or stainless steel
- Levers: Cast zinc
- Rose: Wrought brass or stainless steel

Rose Diameter:

3-17/32" (90 mm) levers; 3" (76 mm) knobs

Lock Chassis:

- Heavy gauge steel, zinc dichromated for corrosion resistance
- Free wheeling (levers only)
- Thru-bolt mounting (levers only)

Keys:

Two operating keys supplied per lock

Cylinders/Cores:

- Brass 6-pin, keyed different - Schlage C Keyway - Standard
- Cylinder drilled 6-pin, Keyed 5-pin - Standard
- Other keying options, including keyed 6-pin, available from factory (see cylinder, core and keying section)
- Zero bit cylinders will be 6 pin keyed - standard
- Small Format Interchangeable Core option available
- SFIC uncombined or combined, brass 6- or 7-pin cores sold separately
- Large Format Interchangeable Core option available - leversets only
- LFIC zero bitted or combined, brass 6-pin cores sold separately - Schlage C only

Door Thickness:

- Knobs: 1-3/8" - 1-3/4" (35 mm - 45 mm)
- Levers: 1-3/8" - 2" (35 mm - 51 mm)

Backset:

- 2-3/4" (70 mm) - Standard
- 2-3/8" (60 mm) - Optional
- 3-3/4" (94 mm) - Optional
- 5" (128 mm) - Optional

Latchbolt:

- 1/2" (13 mm) throw, stainless steel
- 1-1/8" x 2-1/4" (29 mm x 57 mm) faceplate
- Square corner faceplates standard, round corner available
- Deadlocking latchbolt prevents manipulation when door is closed; keyed functions only
- 3/4" (18 mm) latch available

Strike:

3935 ASA 1-1/4" x 4-7/8" (32 mm x 124 mm) strike - Standard

Functions:

10 Passage, 17 Dummy, 40 Privacy, 50 Entry/Office, 53 Entry, 70 Classroom, 73 Corridor (levers only), 80 Storeroom, 95 Intruder Classroom (levers only)

FINISHES

- US3, US4, US10, US10B, US26, US26D (levers only)
- US3, US32D (knobs only)





3400 SERIES - ELECTRIFIED - GRADE 1 CYLINDRICAL HEAVY DUTY

WARRANTY

- Lifetime warranty on mechanical locking components
- One-year warranty on electric components

FEATURES

- Deadlocking latchbolt
- Key override allows latchbolt to be momentarily retracted with the key even though electrically locked. Note that locks that are electrically unlocked may not be locked via the key cylinder.
- Inside lever always allows egress
- Interface with life-safety systems
- Continuous-duty solenoids



Function:

80 - Storeroom

Applications:

- Provides remote locking and unlocking ideal for access control where added security is necessary
- Stairtower doors
- Office doors
- Classrooms
- Elevator lobby doors
- Computer rooms
- Hospital equipment rooms
- Pharmaceutical storage rooms

Voltage:

- 12V AC/DC; current - .250AMP
- 24V AC/DC; current - .150AMP
- Specify 12V or 24V when ordering

FINISHES

US3, US4, US10, US10B, US26, US26D

Function	Function No.	Function Description
Storeroom - Fail Safe	3480EL	Outside lever continuously locked electrically. Latchbolt operable from the outside by key, by breaking electric current, or by power failure. Auxiliary latch deadlocks latchbolt when door is closed. Inside always free for immediate egress.
Storeroom - Fail Secure	3480EU	Outside lever continuously locked. Latchbolt operable from the outside by key or by applying electrical current. Auxiliary latch deadlocks latchbolt when door is closed. Inside always free for immediate egress.
Storeroom - Request to Exit	3480RX	Monitors inside lever rotation. Incorporates into fire alarm system or in conjunction with an electromagnet.
Storeroom - Fail Safe w/ Request to Exit	3480ELRX	Outside lever continuously locked electrically. Latchbolt operable from the outside by key, by breaking electric current, or by power failure. Auxiliary latch deadlocks latchbolt when door is closed. Inside always free for immediate egress. Inside lever rotation is monitored. Incorporates into fire alarm system.
Storeroom - Fail Secure w/ Request to Exit	3480EURX	Outside lever continuously locked. Latchbolt operable from the outside by key or by applying electrical current. Auxiliary latch deadlocks latchbolt when door is closed. Inside always free for immediate egress. Inside lever rotation is monitored. Incorporates into fire alarm system.





3400 SERIES - POWER SUPPLIES

See power supply area within the Electrified Products section for more details on our full selection of power supplies. Hager 2903, 2908 and 2909 power supplies are designed to power locking devices. Their features include:

- UL Listed
- Filtered/regulated 24VDC
- Overload protection
- Over voltage protection
- Short circuit protection
- Surge suppression on Fail Safe and Fail Secure outputs
- Fire alarm input standard

2903 Power Supply Includes:

- 24VDC, 2Amp
- Automatically accepts 120 or 240VAC input
- Auxiliary 24VDC output for stand alone devices
- Switch 24VDC outputs for fail safe or fail secure locking hardware
- Surge suppression on Fail Safe and Fail Secure outputs

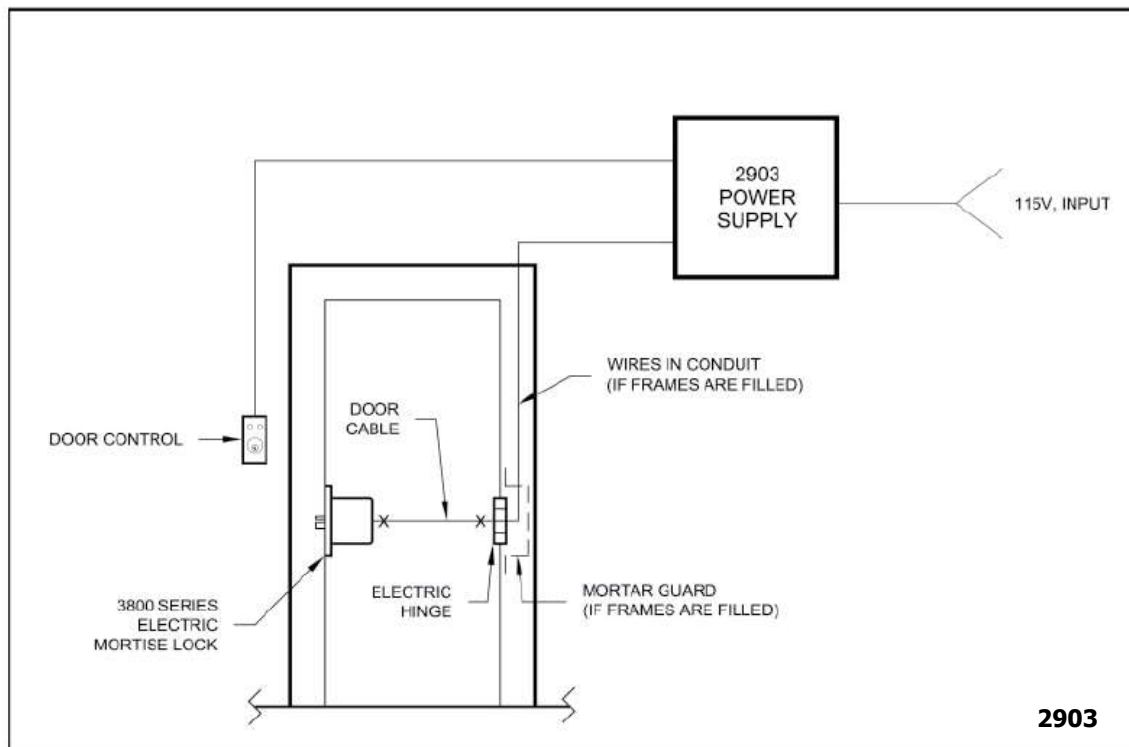
2908 Power Supply Includes:

- Field selectable 12VDC or 24VDC, 1Amp
- 115VAC standard (230VAC optional)
- Separate PTC protected charging for battery backup
- LED status indicator
- Modular design allows optional components to fit any application (see Electrified Catalog for a full list of components)

2909 Power Supply Includes:

- Field selectable 12VDC or 24VDC, 2Amp
- 115VAC standard (230VAC optional)
- Separate PTC protected charging for battery backup
- LED status indicator
- Modular design allows optional components to fit any application (see Electrified Catalog for a full list of components)

Hager Locking System





3400 SERIES - LATCHBOLTS

Spring Latches



3943
2-3/4" (70 mm) Backset
Passage Spring Latch - Standard
• Square and round corner available
• 1-1/8" x 2-1/4" (29 mm x 57 mm) faceplate

3945
2-3/8" (60 mm) Backset
Passage Spring Latch
• Square and round corner available
• 1-1/8" x 2-1/4" (29 mm x 57 mm) faceplate



3964
2-3/4" (70 mm) Backset
Privacy Spring Latch - Standard
• Square and round corner available
• 1-1/8" x 2-1/4" (29 mm x 57 mm) faceplate

3966
2-3/8" (60 mm) Backset
Privacy Spring Latch
• Square and round corner available
• 1-1/8" x 2-1/4" (29 mm x 57 mm) faceplate

Backset Extension Links



3916
3-3/4" (95 mm) Backset
Extension Link
Must use with 2-3/8" (60 mm) backset latch to achieve 3-3/4" total backset



3936
5" (127 mm) Backset
Extension Link
Must use with 2-3/4" (70 mm) backset latch to achieve 5" total backset

Dead Latches



3932
2-3/4" (70 mm) Backset
Dead Latch
• 3/4" (18 mm) throw
• Square corner only
• For use on fire rated pairs of doors
• 1-1/8" x 2-1/4" (29 mm x 57 mm) faceplate



3944
2-3/4" (70 mm) Backset
Dead Latch - Standard
• Square and round corner available
• For use with all keyed functions other than corridor
• 1-1/8" x 2-1/4" (29 mm x 57 mm) faceplate

3946
2-3/8" (60 mm) Backset
Dead Latch
• Square and round corner available
• For use with all keyed functions other than corridor
• 1-1/8" x 2-1/4" (29 mm x 57 mm) faceplate



3992
2-3/8" (60 mm) Backset
Dead Latch - Corridor Function Only
• Square and round corner available
• 1-1/8" x 2-1/4" (29 mm x 57 mm) faceplate

3993
2-3/4" (70 mm) Backset
Dead Latch - Corridor Function Only
• Square and round corner available
• 1-1/8" x 2-1/4" (29 mm x 57 mm) faceplate





3400 SERIES - STRIKES

3400 SERIES ACCESSORIES



3933

T-Strike with Plastic Dust Box

- 1-1/8" x 2-3/4" (29 mm x 70 mm)
- Dust box included



3911

Thru-Bolt Jig

For lever set only



3934

Full Lip Strike

1-5/8" x 2-1/4" (41 mm x 57 mm)



3935

Standard ASA Strike Plate

- 1-1/4" x 4-7/8" (32 mm x 124 mm)
- 1-5/16" lip
- Other lengths available upon request



3958

Full Lip Strike with Round Corner

- 1-5/8" x 2-1/4" (41 mm x 57 mm)
- 1/4" (6 mm) radius