



ASSA ABLOY

Alarm Controls | 2023 Product Guide

Access. Value. Today.

Experience a safer
and more open world

ABOUT ALARM CONTROLS

About

Founded in 1971, Alarm Controls offers a complete line of affordable access control products and accessories to secure and control commercial door openings at an exceptional value. Our robust product lines provide a wide variety options, to fit any need or job.

Today, backed by the strength of ASSA ABLOY, the global leader in door opening solutions, Alarm Controls continues to grow while maintaining the high level of customer service, quality and short lead times that our customers have grown accustomed to over the years.

We also remain committed to custom solutions and as always -

YOU DREAM IT. WE BUILD IT!

Customer Support

We're here to help and you can contact us in the following ways:

- Call us at 800.645.5583 to talk to a Customer Support representative from 9:00 a.m. to 6:00 p.m. EST
- Email us at customersupport.alarmscontrols@assaabloy.com
- Visit www.alarmscontrols.com to learn more about our products and services or to live chat with a representative

***On behalf of everyone in the Alarm Controls family,
thank you for choosing our products.***

NO TOUCH SENSORS

MODEL NTS

DC Powered, Wired Output
Request to Exit Station



NTS-1



NTS-2



NTS-1

- SPDT relay
- 12 or 24 VDC hard powered
- Brighter LED Halo for better visual indication
- 0 to 35 second selectable time delay
- Hard-wired connection allows for faster hand detection and activation

MODEL NTB

Battery Powered, Wired Output
Request to Exit Station



NTB-1



NTB-1A



NTB-2



NTB-3

- DPDT relay
- Battery or 12 or 24 VDC hard powered
- Low battery LED status indicator
- 0 to 10 second selectable time delay
- Audible feedback (buzzer) configurable via jumper
- Obstruction detection

How to Order

NT	B	-1	A	-BK
Series	Model	Plate	Screen	Finish
NT No Touch	S DC powered, wired output	1 Single Gang	(Blank) English - Standard "Wave to Open"	(Blank) Stainless Steel
	B Battery powered, wired output	2 Double Gang	FR French*	BK Black
		3 Narrow Stile	SP Spanish*	
			A ADA	

*French and Spanish "Wave to Open" options are only available with NTS-1 at this time.

MAGNETIC LOCKS

Limited Lifetime Warranty

MODEL 320S 300 lbs Single Lock



- 300 lbs maximum holding force
- Magnet size: 6-11/16" L x 1-1/2" H x 7/16" W
- 12 or 24VDC switch selectable
- Ideal for cabinets and showcases

MODEL 600S 600 lbs Single Lock



- 600 lbs maximum holding force
- Magnet size: 9-7/8" L x 1-11/16" H x 1" W
- UL 10C, UL 294, ULC-S104 (Canada) listed
- 12 or 24VDC switch selectable

MODEL 600D 600 lbs Double Lock



MODEL 600DBL 600 lbs Double Lock with Red Status LED, bond sensor and door status sensor



- 600 lbs maximum holding force per lock
- Magnet size: 19-3/4" L x 1-7/8" H x 1" W
- UL 10C, UL 294, ULC-S104 (Canada) listed
- 12 or 24VDC switch selectable

MODEL 600L 600 lbs Single Lock with Red Status LED



- 600 lbs maximum holding force
- Magnet size: 9-7/8" L x 1-11/16" H x 1" W
- 12 or 24VDC switch selectable

MODEL 600LB 600 lbs Single Lock with Bond Sensor, Door Status Sensor and Bi-Color LED



- 600 lbs maximum holding force
- Magnet size: 9-7/8" L x 1-11/16" H x 1" W
- UL 10C, UL 294, ULC-S104 (Canada) listed
- SPDT 3A relay contact rating
- 12 or 24VDC switch selectable

MODEL 1200S 1200 lbs Single Lock



- 1200 lbs maximum holding force
- Magnet size: 10-1/2" L x 2-7/8" H x 1-1/2" W
- UL 10C, UL 294, ULC-S104 (Canada) listed
- 12 or 24VDC switch selectable

MODEL 1200D 1200 lbs Double Lock with Bond Sensor, Door Status Sensor and Bi-Color LED



- 1200 lbs maximum holding force per lock
- Magnet size: 21" L x 2-7/8" H x 1-1/2" W
- UL 10C, UL 294, ULC-S104 (Canada) listed
- SPDT 3A relay contact rating
- 12 or 24VDC switch selectable

MODEL 1200L 1200 lbs Single Lock with Red Status LED



- UL and ULC Listed
- 1200 lbs maximum holding force
- Magnet size: 10-1/2" L x 2-7/8" H x 1-1/2" W
- UL 10C, UL 294, ULC-S104 (Canada) listed
- 12 or 24VDC switch selectable

MODEL 1200LB 1200 lbs Single Lock with Bond Sensor, Door Status Sensor and Bi-Color LED



- 1200 lbs maximum holding force
- Magnet size: 10-1/2" L x 2-7/8" H x 1-1/2" W
- UL 10C, UL 294, ULC-S104 (Canada) listed
- SPDT 3A relay contact
- 12 or 24VDC switch selectable

MAGNETIC LOCKS AND ACCESSORIES

Limited Lifetime Warranty

MODEL 600WP

600 lbs Weatherproof Gate Lock



- 600 lbs maximum holding force
- Magnet size: 8-5/8" L x 1-5/8" H x 1"W
- 3/8" I.D. Stainless Steel jacket protects cable
- 12 or 24 VDC, selectable

MODEL 1200WP

1200 lbs Weatherproof Gate Lock



- 1200 lbs maximum holding force
- Magnet size: 9" L x 2-5/8" H x 1-5/8" W
- 12 or 24VDC
- Fitted with 1/2" I.D. and 3/4" O.D. NPT fittings
- 10" colored leads in plastic jacket
- Sealed in stainless steel case

MODEL DJ-1

Magnetic Lock Drill Jig



- Designed for fast and accurate magnetic lock installations
- Use for 600 and 1200 Series single locks
- Jig has temporary mounting holes for hands-free use

DELAYED EGRESS MAGNETIC LOCK

Limited Lifetime Warranty

MODEL 1200DE



Features

- 1200 lb holding force
- Choice of English, French/English or Spanish/English voice message
- Digital countdown LED display
- Door prop alarm
- Energy savings mode
- Field configurable settings include:
 - Voice message language
 - Choice of voice and alarm tone or alarm tone only
 - Nuisance delay times 0, 1, 2, 3 seconds
 - Bypass delay times 0, 10, 15, 30 seconds
 - Door movement activation
 - Auto or manual relock

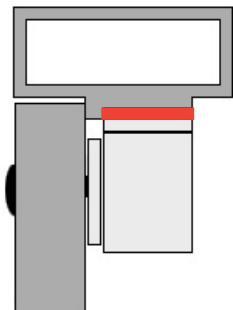
Options

- 1200DE-CA15S California-required 15s exit delay
- 1200DE-CA30S California-required 30s exit delay
- 1200DE-CH Chicago-required 15s exit delay, 1s nuisance delay, and 0s bypass time

MAGNETIC LOCK ACCESSORIES

Add **DURO** to the end of any magnetic lock mounting bracket listed on this page for Duranodic finish.

DROP DOWN PLATES Lowers Magnetic Locks by 1/4" to 5/8"



DROP DOWN PLATES for Single Locks



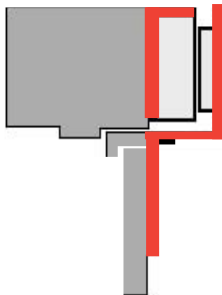
- **AM3300** 1/2" plate for 600 lbs lock
- **AM3305** 5/8" plate for 600 lbs lock
- **AM3330** 1/4" plate for 600 lbs lock
- **AM6300** 1/2" plate for 1200 lbs lock
- **AM6305** 5/8" plate for 1200 lbs lock
- **AM6330** 1/4" plate for 1200 lbs lock

DROP DOWN PLATES for Double Locks



- **AM3331** 1/4" plate for 600 lbs lock
- **AM3332** 1/2" plate for 600 lbs lock
- **AM6331** 1/4" plate for 1200 lbs lock
- **AM6332** 1/2" plate for 1200 lbs lock

Z BRACKETS Use on In-Swinging Doors



Z BRACKETS



- **AM3370** for all 600 lbs single locks
- **AM3375** for all 600 lbs double locks
- **AM6370** for all 1200 lbs single locks
- **AM6375** for all 1200 lbs double locks

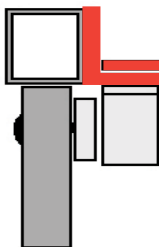
Z BRACKETS WITH INTEGRATED DRESS COVER



- **AM3370C** for 600 lbs single magnetic locks
- **AM6370C** for 1200 lbs single magnetic locks
- For use on in-swinging doors

ANGLE BRACKETS Use to Extend Door Header Adjustable Single Lock Brackets

- **AM3325** for 600 Series
- **AM6325** for 1200 Series



ANGLE BRACKETS



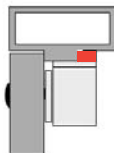
- **AM3320** for 600 Series single locks 1" x 1-1/2" x 9-7/8"
- **AM3326** for 600 Series double locks 1" x 1-1/2" x 19"
- **AM6320** for 1200 Series single locks 1" x 1-1/2" x 10-1/2"
- **AM6326** for 1200 Series double locks 1" x 1-1/2" x 21"

FILLER PLATES



Use to widen door stop. Use two for double locks.

- **AM6360** Filler Plate 10-1/2" L x 3/4" W x 5/8" H
- **AM6361** Filler Plate 10-1/2" L x 3/4" W x 1/2" H



MAGNETIC LOCK ACCESSORIES

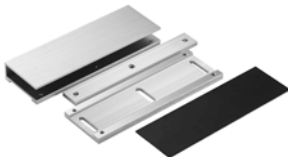
Limited Lifetime Warranty

MODEL JN-1 Jacknut Tool Kit



- Provides a reliable and secure method for securing locks to a metal door frame
- Includes 25/64" drill bit and five mandrel sizes
- **JN-50** contains 50 jack nuts and screws

MODEL GDH Glass Door Holder



- Mounts armature plate on frameless glass doors
- Accommodates 600 and 1200 Series magnetic lock armature plates

ARMATURE AND MOUNTING PLATES



- **AM3310** for 600 Series locks
- **AM6310** for 1200 Series locks
- **AM3315** for 600 and 1200 Series locks
- **AM3338** for 600 Series locks
- **AM6338** for 1200 Series locks

EGRESS DEVICES

Limited Lifetime Warranty

MODEL SREX-100 Active Focused Infrared Motion Sensor



- Motion sensing request to exit device
- UL 294 and ULC-S319 listed
- Narrow activation zone is limited to door handle area and eliminates cross traffic activation
- Sensor cannot be activated by placing objects under door
- Easy installation with adjustable depth zone
- Operates on 12/24VAC or VDC auto sensing
- Maximum current draw is 155mA with sounder off, 200mA with sounder on
- Temperature range for UL installations is +32° F to +120° F, (0° C to +49° C)
- DPDT contacts (2 form C)
- Relay contact rated 1.3A @ 30VDC or 24VAC
- Adjustable time delay from 1 to 60 seconds
- Built-in buzzer can be silenced, if required
- REX input, keypad or card reader input and door position switch input
- 14 pin female connector with four feet of cable

REQUEST TO EXIT STATIONS

Limited Lifetime Warranty

Add **-2** to TS-1, TS-2, TS-3, TS-4, TS-5 to for additional SPDT output. Add **T** to TS models for 2 to 45 second adjustable timed SPDT output. Custom language and plate finish options available. Contact factory for more details.

MODEL TS-1



- 1-1/2" diameter button
- Momentary switch
- One N/O and one N/C contact
- Contacts rated 10A
- Red and green LED's
- Works on 12 or 24VDC

MODEL TS-2



- 2" square illuminated button
- SPDT momentary switch
- Contacts rated 1A @ 35VDC
- UL 294 listed
- Operates on 12 or 24VDC
- 1-1/2" mounting depth

MODEL TS-3



- 2" square illuminated button and 1/2" red LED
- SPDT momentary switch
- Contacts rated 1A @ 35VDC
- UL 294 listed
- Operates on 12 or 24VDC
- 1-1/2" mounting depth

MODEL TS-4



- 2" square illuminated button
- SPDT momentary switch
- Contacts rated 1A @ 35VDC
- UL 294 listed
- Operates on 12 or 24VDC
- 1-1/2" mounting depth

MODEL TS-5



- 2" square illuminated button and 1/2" red LED
- SPDT momentary switch
- Contacts rated 1A @ 35VDC
- UL 294 listed
- Operates on 12 or 24VDC
- 1-1/2" mounting depth

MODEL TS-6 | TS-8



- **TS-6** single gang; **TS-8** narrow stile
- 5/8" x 7/8" illuminated button and 1/4" red and green LEDs
- DPDT momentary switch
- Rated 2A @ 12-28 VDC
- UL 294 listed
- Operates on 12 or 24VDC

MODEL TS-7 | TS-9



- **TS-7** single gang; **TS-9** narrow stile
- 5/8" x 7/8" illuminated button
- DPDT momentary switch
- DPDT timed contacts rated 3A at 35 VDC or 120 VAC
- UL 294 listed
- Operates on 12 or 24VDC

MODEL TS-21



- Extra large 2-1/2" mushroom push button
- SPDT momentary switch
- Rated 10A at 35 VDC or 120 VAC
- **TS-21B** (black), **TS-21G** (green), **TS-21R** (red)

MODEL TS-40



- Meets BOCA code for access controlled egress doors
- 2-60 second SPDT timed contacts, rated 2A
- SPDT momentary contacts, rated 10A

VANDAL RESISTANT REQUEST TO EXIT STATIONS

Limited Lifetime Warranty

MODEL TS-10



- 3/4" diameter pushbutton
- Momentary switch
- DPDT contacts rated 2A @ 12-28 VDC
- Red and green LEDs
- Operates on 12 or 24VDC

MODEL TS-11



- 3/4" diameter pushbutton
- Momentary switch
- DPDT contacts rated 2A @ 12-28 VDC
- Red and green LEDs
- Operates on 12 or 24VDC
- 1-3/4" wide stainless steel plate

MODEL TS-12



- 3/4" diameter pushbutton
- Momentary switch
- DPDT contacts rated 2A @ 12-28 VDC
- Available in weatherproof solution **TS-12302**

Models listed above have a switch depth of 1-1/2", meet IP65 standard and are UL 294 listed. Add **T** to TS models for 2 to 45 second adjustable timed SPDT output.

PNEUMATIC TIME DELAY EXIT RELEASE STATIONS

Limited Lifetime Warranty

MODEL TS-14



- 1-1/2" round green mushroom button
- N/O and N/C contacts rated 2A @ 12-28 VDC
- Time range 2-60 seconds
- UL 294 listed
- Available in weatherproof solution **TS-14302**

MODEL TS-14N



- 1-1/2" round green mushroom button
- N/O and N/C contacts rated 2A @ 12-28 VDC
- Time range 2-60 seconds
- UL 294 listed
- 1-3/4" wide stainless steel plate

MODEL TS-15



- 0.25" diameter button with guard ring
- N/O and N/C contacts rated 2A @ 12-28 VDC
- Time range 2-60 seconds
- UL 294 listed
- 1-3/4" wide stainless steel plate

MODEL TS-16



- 1/4" diameter button with guard ring
- N/O and N/C contacts rated 2A @ 12-28 VDC
- Time range 2-60 seconds
- UL 294 listed

MODEL TS-21RPN



- 2-1/2" round red mushroom button
- N/O and N/C contacts rated 2A @ 12-28 VDC
- Time range 2-60 seconds
- UL 294 listed

MODEL TS-60



- 2-1/2" round red mushroom button
- N/O and N/C contacts rated 2A @ 12-28 VDC
- Time range 2-60 seconds
- UL 294 listed

EGRESS/EMERGENCY/ PANIC STATIONS

Limited Lifetime Warranty

MODEL KR

Latching with Key Reset



- 1-1/2" diameter red mushroom button
- Locking key reset switch
- Contacts rated 10A @ 35VDC or 120VAC
- One N/O and one N/C contact

MODEL TS-32

Latching Panic Station



- 1-1/2" diameter red mushroom button
- Contacts rated 10A @ 35VDC or 120VAC
- One N/O and one N/C latching contacts
- Silkscreened with black epoxy ink

MODEL PBL

Latching Panic Station



- 1-1/2" diameter red mushroom button
- Latching switch
- Contacts rated 10A @ 35VDC or 120VAC
- One N/O and one N/C contact

MODEL PBM

Momentary Egress Station



- 1-1/2" diameter red mushroom button
- Momentary switch
- Contacts rated 10A @ 35VDC or 120VAC
- One N/O and one N/C contact

MODEL EB

Momentary Egress Station



- 1-1/2" diameter red mushroom button
- Momentary switch
- Contacts rated 10A @ 35VDC or 120VAC
- One N/O and one N/C contact

MODEL TS-25

Emergency Door Release



- 85 dB Piezo Buzzer
- 2A @ 12-28 VDC
- 12/24VDC operation
- Available with 1-3/4" wide plate **TS-26**

MODEL DE-1

Delayed Egress Station



- Secure an exit door while still providing egress during an emergency
- Operates on 12/24VDC
- Two second nuisance delay
- Adjustable delay time (2-30 seconds)
- Key switch reset and re-lock
- SPDT instant contacts for remote alarm
- SPDT delayed contacts for unlocking door
- Replacement key available
- Countdown buzzer and flashing LED lamp during timing mode

MODEL GBS-1

Emergency Door Release



- ABS 757 plastic construction
- SPDT switch rated 10 A @ 24VDC
- 3-1/2" x 3-1/2" x 2-1/2" Deep
- **GBS-1GLASS** replacement glass

UNDER DESK/ COUNTER DOOR RELEASE

MODEL TS-17

Key Controlled Door Release



- One N/O and one N/C contact, rated 10A @ 35VDC or 120VAC
- Black ABS plastic box with mounting ears
- UL 294 listed

MODEL TS-18 | TS-19 | TS-20

Door Release



- SPDT momentary contacts, 4A @ 28VDC (**TS-18D** DPDT)
- Button protected with guard ring
- Black ABS plastic box with mounting ears
- UL 294 listed
- **TS-19** One N/O and one N/C momentary switch
- **TS-20** latching switch
- **TS-20D** DPDT switch

REQUEST TO EXIT ACCESSORIES

Limited Lifetime Warranty

MODEL WP-4



- Remote station with a hinged self-closing cover
- 1/4" LEDs current draw 8mA at 12 VDC, 12mA at 24 VDC
- 6" red and black leads
- 3/4" "D" hole for Ace lock

MODEL WPC



- Hinged self-closing cover
- Die cast metal construction
- Hasp allows secure closure with a small padlock
- Mounts on Model 30203 back box

MODEL 30203



- Die cast zinc painted gray
- Three 0.5" hold plugs
- O.D.: 4-1/2" L x 2-3/4" W x 2" D
- I.D.: 4-5/8" L x 2-9/16" W x 1-7/8" D

MODEL LUC | LUCS



- Lift up covers to avoid accidental activation
- Hasp allows secure closure with a small padlock
- **LUC**: for 1-1/2" mushroom button;
- **LUCS**: for rectangular button

MONITORING/CONTROL STATIONS

Limited Lifetime Warranty

All SLP contacts rated 2A @ 12-28 VDC, operate on 12/24 VAC or VDC and offer illuminated switches terminated with 8" colored leads.

MODEL SLP-1M

One Station



- 1 DPDT momentary contact
- 1 red LED
- Order **SLP-1L** for latching contacts

MODEL SLP-2M

Two Station



- 2 DPDT momentary contacts
- 2 red LEDs
- Order **SLP-2L** for latching contacts

MODEL SLP-3M

Three Station



- 3 DPDT momentary contacts
- 3 red LEDs
- Order **SLP-3L** for latching contacts

MODEL SLP-4M

Four Station



- 4 DPDT momentary contacts
- 4 red LEDs
- Order **SLP-4L** for latching contacts

MODEL SLP-5M

Five Station



- 5 DPDT momentary contacts
- 5 red LEDs
- Order **SLP-5L** for latching contacts

MODEL SLP-6M

Six Station



- 6 DPDT momentary contacts
- 6 red LEDs
- Order **SLP-6L** for latching contacts

MODEL SLP-7M

Seven Station



- 7 DPDT momentary contacts
- 7 red LEDs
- Order **SLP-7L** for latching contacts

MODEL SLP-8M

Eight Station



- 8 DPDT momentary contacts
- 8 red LEDs
- Order **SLP-8L** for latching contacts

MODEL TS-55 | TS-56

Single Gang Station



- **TS-55** momentary switch; **TS-56** latching switch
- Specify green (**G**) or red (**R**) 1-1/2" mushroom push button
- 1/2" red LED status indicator
- IP65 standard
- 1 N/O and 1 N/C latching contacts, 10A @ 35VDC

MONITORING/CONTROL STATIONS

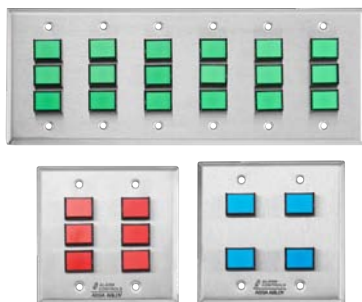
Limited Lifetime Warranty

MODEL DTC Desktop Consoles



- Single or multiple switch configurations
- Specify switch quantity (M1, M2, M3)
- Specify switch type: SPDT/DPDT, Momentary/ Alternate
- Lens color: green, red, yellow, blue, white
- Illumination: none, 12 VDC, 24 VDC
- Contact rated 3A at 24 VDC

MODEL CP Control Panels



- Specify switch quantity (1-24 total); Each gang accepts up to 4 switches
- Specify switch type: SPDT/DPDT, Momentary/Alternate
- Lens color: green, red, yellow, blue, white
- Illumination: none, 12 VDC, 24 VDC
- N/O and N/C contacts rated 10A at 35 VDC or 120 VAC

For complete How To Order details, visit the Alarm Controls Pricelist at alarmcontrols.com

MORTISE CYLINDER KEY SWITCH STATIONS

Limited Lifetime Warranty – Mortise Cylinders Not Supplied

All MCK Switch Station contacts rated 4A @ 28 VDC, offer illuminated switches terminated with 8" colored leads, and include tamperproof and slotted head screws.

MODEL MCK-1



- 1-3/4" wide plate
- Depth behind plate 1.25"

MODEL MCK-2



- 1-3/4" wide plate
- Green LED operates on 12/24VAC or VDC

MODEL MCK-3



- 1-3/4" wide plate
- Green and red LEDs operate on 12/24VAC or VDC

MODEL MCK-4



- Single gang plate
- Depth behind plate 1.25"

MODEL MCK-5



- Single gang plate
- Green LED operates on 12/24VAC or VDC

MODEL MCK-6



- Single gang plate
- Green and red LEDs operate on 12/24 VAC or VDC

Mortise Cylinders Not Supplied

- Model **CY-1** mortise cylinder, keyed different
- Model **CY-1A** mortise cylinder, keyed alike

Switch Type	1.75" Wide	1.75" Wide Green LED	1.75" Wide Green LED Red LED	Single Gang	Single Gang Green LED	Single Gang Green LED Red LED
SPDT Momentary Action	MCK-1	MCK-2	MCK-3	MCK-4*	MCK-5*	MCK-6*
SPDT Alternate Action	MCK-1-2	MCK-2-2	MCK-3-2	MCK-4-2*	MCK-5-2*	MCK-6-2*
DPDT Momentary Action	MCK-1-3	MCK-2-3	MCK-3-3	MCK-4-3*	MCK-5-3*	MCK-6-3*
DPDT Alternate Action	MCK-1-4	MCK-2-4	MCK-3-4	MCK-4-4*	MCK-5-4*	MCK-6-4*
Pneumatic Time Delay (2 to 45 seconds)	N/A	N/A	N/A	MCK-4-5*	MCK-5-5*	MCK-6-5*

*Weather resistant cover and surface mount back box available. Add "-WP" to model number for the weatherproof option.

KEY SWITCHES

Limited Lifetime Warranty

ACE KEY SWITCH MODELS



- **KA-105**, ON/OFF switch key removable in ON position, keyed different
- **KA-105A**, same as KA-105 except keyed alike
- **KA-106**, ON/OFF switch key removable OFF position, keyed different
- **KA-106A**, same as KA-106 except keyed alike
- **KA-107**, momentary switch key removable in OFF position, keyed different
- **KA-107A**, same as KA-107 except keyed alike
- **KA-107ANC**, same as KA-107A except key removable in ON position
- **KA-108**, ON/OFF switch key removable both positions, keyed different
- **KA-108A**, same as K-108 except keyed alike

FLAT KEY SWITCH MODELS



- **KA-109**, single bitted flat key, ON/OFF keyswitch, key removable in ON or OFF position, keyed different
- **KA-109A**, same as KA-109 except keyed alike
- **KA-110**, single bitted flat key, momentary switch, key removable in OFF position
- **KA-110A**, same as KA-110 except keyed alike
- **KA-111**, double bitted flat key, removable in ON or OFF position SPDT switch, eight inch colored leads, keyed different
- **KA-111A**, same as KA-111 except keyed alike

Replacement keys available for keyed alike versions only

MOUNTING PLATES FOR ACE & FLAT KEY SWITCHES

Model	NARROW STILE PLATES		SINGLE GANG PLATES		
	Slim SS No LED	Slim SS 1 RED LED	Single Gang SS No LED	Single Gang SS 1 RED LED	Single Gang Weather Cover Plate 1 RED & 1 Green 1/4" LED
All Ace Key Switches Models KA105-KA108A Inclusive	RP-24		RP-20 * see below	RP-07 RP-50 has 1 red & 1 green LED	WP-4
Flat Key Switches Models KA-109 to KA110A Only	RP-25	CP1-1630	RP-21	RP-08	WP-6
Flat Key Switches Models KA-111 to KA111A Only	RP-23SLIMLINE		RP-23		

* CP1-1272 RP-20 SG SS plate with single D hole screened ON OFF (ON at 3 o'clock & OFF at 12 o'clock) - Minimum order 10 Pieces

Legend:
SS = Stainless
Steel

VANDAL RESISTANT PUSH PLATES

Limited Lifetime Warranty

MODEL PN5-513

Mullion Mount



- Pneumatic time delay, N/O, N/C; rated 2A @ 12-28VDC
- Machined from 6061 solid aluminum
- **"PUSH TO EXIT"**
- Engraved legend
- Black anodized with white fill
- Tamper resistant
- Size: 1-7/8" W x 4-1/2" L
- UL 294 listed

MODEL PT5-152

T Style



- Pneumatic time delay, N/O, N/C; rated 2A @ 12-28VDC
- Machined from 6061 solid aluminum
- **"EMERGENCY DOOR RELEASE"**
- Clear anodized with red fill
- Mounts on Single Gang box
- Size: 3" W x 4-1/2" L
- UL 294 listed

MODEL PS5-152

Single Gang Style



- Pneumatic time delay, N/O, N/C; rated 2A @ 12-28VDC
- Machined from 6061 solid aluminum
- **"EMERGENCY DOOR RELEASE"**
- Clear anodized with red fill
- Mounts on Single Gang box
- Size: 3" W x 4-1/2" L
- UL 294 listed

MODEL PD5-433

Double Gang Push Plate



- Pneumatic time delay, time range 2-60 seconds
- N/O, N/C contacts; Contacts rated 2A @ 12-28VDC
- Tamper and vandal resistant mounting
- Mounts on two gang box
- Machined from 6061 solid aluminum with blue anodizing

MODEL JP1



- Large 5-1/2" square 302 stainless steel plate
- Mounts on two gang electrical box
- Vandal resistant
- **JP1-1** SPDT 0.5A @ 125VDC momentary contacts
- **JP1-2** DPDT 0.5A @ 125VDC momentary contacts
- **JP1-5** pneumatic time delay (2-60 seconds) N/O and N/C contact rated 2A @ 12-28VDC
- Custom silkscreening available

MODEL JP2



- Large 5-1/2" square blue ADA push plate
- Mounts on two gang electrical box
- Vandal resistant
- **JP2-1** SPDT 0.5A @ 12-28 VDC momentary contacts
- **JP2-2** DPDT 0.5A @ 12-28 VDC momentary contacts
- **JP2-5** pneumatic time delay (2-60 seconds) N/O and N/C contact rated 2A @ 12-28VDC
- Custom silkscreening available

MODEL JP3



- Large 5-1/2" square 302 stainless steel push plate
- Mounts on two gang electrical box
- Vandal resistant
- **JP3-1** SPDT 0.5A @ 12-28 VDC momentary contacts
- **JP3-2** DPDT 0.5A @ 12-28 VDC momentary contacts
- **JP3-5** pneumatic time delay (2-60 seconds) N/O and N/C contact rated 2A @ 12-28VDC
- Custom silkscreening available

VANDAL RESISTANT PUSH PLATES

HOW TO ORDER

Push Plates - PN, PT, PS, PD

PLATE	SWITCH TYPE	FINISH	ENGRAVING *	ENGRAVING FILL
PS	5	-1	1	1
PN - Narrow	5 - Pneumatic Time Delay (2 to 60 seconds)	1 - Clear	1 - Push to Exit	1 - Black
PT - T-Style		2 - Bronze	2 - Push to Operate	2 - Red
PS - Single Gang		3 - Brass	3 - Push to Open	3 - White
PD - Double Gang		4 - Blue	4 - ADA Symbol Push to Open	4 - Blue
		5 - Black	5 - Emergency Door Release	

* Push to Open, Emergency Door Release engraving options not available on PD Double Gang Plates.

PBM, PBL, KR, EB

MODEL	CONTACTS	PLATE	ILLUMINATION*	GUARD RING
PBM	-1	-4	-L2	-GR
PBM Momentary Operator	1 - One N/O pair and one N/C pair	1 - 302 Stainless Steel	L1 - 6VDC	GR - Guard Ring
PBL Latching Operator	2 - 2 N/O pairs	2 - White	L2 - 12VDC	LUC - Lift Up Cover
KR Latching Key Reset	3 - 2 N/C pairs	3 - Ivory	L3 - 24VDC	(blank) - Lift Up Cover
EB Momentary Operator	4 - 1 N/C pair	4 - Red	L4 - 120VAC	
		5 - 1-3/4" Stainless		
		6 - 1-3/4" Red		

*Illumination Options only available for PBM, PBL and EB models.

Jumbo Push Plates

JUMBO MODEL	SCREENING	PLATE FINISH	PNEUMATIC TIMER
JP	1 "Press to Exit" in blue	302 Stainless Steel	JP1-5
JP	2 "Press to Open" with ADA symbol in white	Blue	JP2-5
JP	3 "Press to Operate" in blue	302 Stainless Steel	JP3-5

We've got a Lock on Affordability.



1200S



1200D



600S



1200DE



600D

Turn to Alarm Controls magnetic locks for
quality access control at a great value.

Single and double locks | Holding force 300 lbs to 1200 lbs | UL listed
12 or 24VDC | Bond and door sensors | Status LED | Limited lifetime warranty

To learn more about our affordable solutions visit
www.alarmcontrols.com or call 800.645.5538



ASSA ABLOY

AlarmControls.com

Experience a safer
and more open world

HAZARDOUS ENVIRONMENT REQUEST TO EXIT STATIONS

MODEL EXP-1



- UL and ULC approved for hazardous locations
- Heavy cast NEMA type 7 enclosure
- Conforms to Class I, DIV. I and II, Group B, C, D, E, F and G
- 2" diameter pushbutton silkscreened with black epoxy ink
- One N/O and one N/C contact
- Contacts rated 5A @ 35VDC or 120VAC
- Pipe thread 1/2-14 NPT
- Push button can be customized

MODEL EXP-15



MODELS

- EXP-1 Momentary action switch, **"PUSH TO EXIT"**
- EXP-15 Momentary action switch, **"PANIC"**
- EXP-2 Latching action switch, **"PUSH TO EXIT"**
- EXP-25 Latching action switch, **"PANIC"**

HAZARDOUS ENVIRONMENT SENSOR

MODEL MREX



- UL Approved for Hazardous Locations
- Conforms to Class I, DIV I | Groups B, C, D
- Conforms to Class II, DIV I/II | Groups E, F, G
- Conforms to Class III
- 166 mA at 12 VDC / 83 mA at 24 VDC
- Operates on 12 to 24 VAC (+/- 10%) / 12 to 24 VDC (+30% / -10%)
- Microprocessed Microwave Motion Detector
- NEMA 4X Enclosure (IP66)
- Bidirectional, Unidirectional Approach and Unidirectional Microwave Detection
- Adjustable relay hold time (0.5 to 9 seconds)

This product is not in full production. All specifications and listings are subject to change. Visit www.AlarmControls.com for the most up to date information on new product launches.

ELECTRIC STRIKES FOR MULTIPLE LOCKSETS

Limited Lifetime Warranty

MODEL AES-100



FEATURES

- For use with cylindrical locksets, mortise latch or mortise exit device
- Non-handed
- Field selectable, fail safe/fail secure
- Accepts locksets with a latch up to 3/4" throw without a deadbolt
- Includes strike body and faceplate kit 4-7/8" x 1-1/4" (1 square & 1 round corner) standard

APPLICATIONS

- Hollow Metal or Aluminum Frames

HOLDING FORCE

- 1,500 lbs (static strength)

SPECIFICATIONS

- ANSI/BHMA Grade 1
- UL 1034 burglary-resistance
- Strike body depth 1-1/2"

ELECTRICAL (CONTINUOUS DUTY)

- Dual voltage 12/24 VDC/VAC
- 130mA @ 12 VAC / 70mA @ 24 VAC
- 210mA @ 12 VDC / 105mA @ 24 VDC

ACCESSORIES

- Additional faceplates available

MODEL AES-200



FEATURES

- For use with cylindrical locksets
- Non-handed - Horizontally adjustable
- Field selectable, fail safe/fail secure
- Accepts locksets with a latch up to 5/8" throw without a deadbolt
- Includes strike body and faceplate kit 4-7/8" x 1-1/4" (1 square & 1 round corner) standard

APPLICATIONS

- Hollow Metal or Aluminum Frames

HOLDING FORCE

- 1,000 lbs (static strength)

SPECIFICATIONS

- ANSI/BHMA Grade 2
- UL 1034 burglary-resistance
- Strike body depth 1-1/2"

ELECTRICAL (CONTINUOUS DUTY ON DC)

- Dual voltage 12/24 VDC/VAC
- 130mA @ 12 VAC / 70mA @ 24 VAC
- 200mA @ 12 VDC / 70mA @ 24 VDC

ACCESSORIES

- Additional faceplates available

MODEL AES-300



FEATURES

- For use with cylindrical locksets
- Non-handed – Horizontally adjustable
- Accepts locksets with a latch up to 5/8" throw without a deadbolt

APPLICATIONS

- Hollow Metal, Aluminum or Wood Frames

HOLDING FORCE

- 1,000 lbs (static strength)
- 50 ft.-lbs (dynamic strength)

SPECIFICATIONS

- ANSI/BHMA Grade 2
- UL 1034 burglary-resistance
- Strike body depth 1-1/2"

ELECTRICAL

- Available in either 12V or 24V AC/DC
- 200mA @ 12V AC/DC
- 100mA @ 24V AC/DC

ACCESSORIES

- Spacers and keeper shims for adjustability

Please see www.alarmscontrols.com for additional information and available solutions.

SELF-CONTAINED DIGITAL KEYPADS

Three Year Warranty

MODEL KP-100A

Surface or Flush Mount Indoor Keypad



- Programmable from the keypad
- Dual voltage 12/24 AC/DC
- Backlit hard plastic keys
- SPDT 5A contacts
- 100 user codes
- Code length from 4 to 8 digits
- Request to exit input
- Audible and visual key press
- 302 stainless steel wall plate
- Optional back box included for surface mounting
- LED status indicators
- False code lockout
- Keypad buzzer can be silenced

MODEL KP-200

Flush Mount Weatherproof Keypad



- Programmable from the keypad
- Dual voltage 12/24 AC/DC
- Backlit metal keys
- SPDT 5A contacts
- Output 1: 100 user codes code length 4 to 8 digits
- Output 2: 10 user codes code length 4 to 8 digits
- Request to exit input, duress output
- Audible and visual key press
- Vandal resistant metal housing
- LED status indicators
- False code lockout
- Built-in buzzer and tamper switch

MODEL KP-300

Mullion Mount Weather Proof Keypad with Built-in Card Reader



- Programmable from the keypad
- 12 VDC only
- Die cast zinc alloy housing
- Two programmable SPDT relays
- Operate with user code, card or code & card
- Output 1: 1000 user codes & cards
- Output 2: 100 user codes & cards
- Die cast, backlit, metal keys
- Vandal resistant metal housing
- LED status indicators
- 50 visitor codes, programmable for one time use or with time limit
- False code lockout
- Built-in buzzer and tamper switch
- **EM-10** package of 10 additional cards
- **EM-04** key fob

MODEL KP-400

Surface Mount Weatherproof Keypad



- Programmable from the keypad
- Dual voltage 12/24 AC/DC
- Backlit metal keys
- Two programmable relay outputs
- Output 1: 100 user codes code length 4 to 8 digits
- Output 2: 10 user codes code length 4 to 8 digits
- Request to exit input, duress output
- Audible and visual key press
- Die cast back box
- 302 stainless steel front plate
- Vandal resistant metal housing
- LED status indicators
- False code lockout
- Built-in buzzer can be silenced

MOUNTING BOXES

Limited Lifetime Warranty

MODEL 426



- Designed for installation of narrow remote stations (RP-1, RP-3, RP-24 and RP-25 only)
- Galvanized 18 gauge C.R.S.
- Size: 1-1/4" W x 3-5/8" L x 1-7/8" D

MODEL 30203



- Suitable for wet locations
- Die cast zinc painted gray
- Three 0.5" hole plugs
- O.D.: 4-1/2" L x 2-3/4" W x 2" D
- I.D.: 4-5/16" L x 2-9/16" W x 1-7/8" D

MODEL SMB-01



- Designed for single gang stations
- Powder coated 18 gauge steel
- N/O front and back tamper switches
- Size: 3" W x 4.5" L x 3" to 2.5" sloping front
- **SMB-01A** N/C tamper switches

MODEL SMB-3



- Designed for door mullion mounting of narrow push plates
- Machined from 6061 aluminum
- Clear anodized finish
- Duroic finish available, model **SMB-3D**

A



Z

And Everything In Between.

From standard push buttons to custom elephant buttons, Alarm Controls is your one-stop shop for design, test, build and technical knowledge. With a minimum order quantity of ONE, let Alarm Controls create a custom product or solution for virtually any application you need or can dream up!

Contact the **Custom Solutions** team at **800.645.5538** or email us at custom.alarmcontrols@assaabloy.com for simple solutions to complex problems.

Experience a safer
and more open world



ASSA ABLOY

REMOTE STATION PLATES

Limited Lifetime Warranty

MODEL RP-9 Single Gang Wall Plate



- Satin stainless steel
- 1/4" red and green LEDs
- Operates on 12 or 24VDC
- Current 13mA on each LED
- Custom screening available
- **RP-9L** 1/2" diameter LEDs

MODEL RP-28 Single Gang Wall Plate



- Satin stainless steel
- 1/4" diameter red LED
- Operates on 12 or 24VDC
- Current draw 13mA
- Custom screening available
- **RP-28L** 1/2" red LED
- **RP-29** 1/4" green LED

MODEL RP-31 Single Gang Wall Plate



- Satin stainless steel
- Four 1/4" diameter red LEDs
- Operates on 12 or 24VDC
- Current 13mA on each LED
- Custom screening available
- **RP-32** Four, 1/4" green LEDs

MODEL RP-26 Single Gang Wall Plate



- Satin stainless steel
- N/O red push button with guard ring
- Contacts rated 0.75A
- Custom screening available
- **RP-26A** N/C black push button with guard ring

MODEL RP-44 Single Gang Wall Plate



- Satin stainless steel
- DPDT shunt switch
- Contacts rated 2A
- Custom screening available
- **RP-45** Two DPDT shunt switches

MODEL RP-100 Single Gang Wall Plate



- Satin stainless steel
- White flush push button
- N/O push button, rated .5A at 35VDC
- **RP-100302** weatherproof plate; **RP-100SLIM** narrow plate

MODEL MP-26



- Chrome plated brass
- N/O red push button with guard ring
- Size: 1-1/4" W x 2-1/4" L
- Contacts rated 0.75A
- **MP-26A** N/C black push button with guard ring

MODEL MP-28



- Chrome plated brass
- 1/4" red LED
- Size: 1-1/4" W x 2-1/4" L
- 8mA at 12VDC; 12mA at 24 VDC
- **MP-29** (green); **MP-30** (bi-colored); **MP-31** (blue)

MODEL MP-44



- Chrome plated brass
- DPDT shunt switch
- Latching action switch
- Size: 1-1/4" W x 2-1/4" L
- Contacts rated 2A
- Push button changes from black to orange when pushed

WALL PLATES

Limited Lifetime Warranty

RP-22

1-1/8" hole for
SC628 sonalert



- Single gang satin stainless steel
- Available in all standard finishes

MODEL RP-20

Single Gang Wall Plate



- Satin stainless steel
- "D" hole for ACE keyswitch
- Custom screening available
- **RP-21** Double "D" hole for Medeco keyswitch

RP-23

3/4" hole for PA-100 or
PA-300 Piezo buzzers



- Single gang satin stainless steel
- Available in all standard finishes

TIMERS

Limited Lifetime Warranty

MODEL MT-1

Mini Adjustable Timer



- 12-24VAC or VDC
- Current draw: 37mA
- SPDT contact
- Contact rating: 2A @ 35VDC/125VAC
- 2-45 second time setting
- One shot relay operating mode
- -25°C to +70°C temperature rating
- Connections made with 8" colored leads
- Foam tape mounting
- Size: 1-3/4" x 1-3/4"
- Fail Safe operation available **MT-1F**

In fail safe operation relay is energized when power is applied. During timing mode relay is not energized.

ELECTRONIC BUZZERS

Limited Lifetime Warranty

PA100 Piezo Buzzer



- Buzzer mounts in 3/4" diameter hole
- Sound level 85dB @ 3 feet
- Voltage range 6 to 28VDC
- 6" red and black leads

PA-200 Piezo Chime



- Piezo chime mounts in 1-1/4" diameter hole
- Sound level 85dB @ 3 feet
- Voltage range 6 to 28VDC
- Current: 95mA @ 12 VDC, 140mA @ 24VDC
- 6" red and black leads

PA-300 Dual Tone Piezo Buzzer



- Continuous and pulsing tones
- Sound level 85dB @ 3 feet
- Buzzer mounts in 3/4" diameter hole
- Voltage range 6 to 28VDC
- 6" red, yellow and black leads

MODEL SC628 Sonalert



- Buzzer mounts in 1-1/8" diameter hole
- Sound level 85dB @ 3 feet
- Voltage range 6 to 28VDC
- Current draw 3mA @ 6VDC, 18mA @ 28VDC
- Screw terminals

MODEL LA32 Piezo Buzzer



- Buzzer mounts in 5/8" diameter hole
- Sound level 85dB @ 3 feet
- Operates on 12VAC or VDC
- Current draw 5mA @ 12 VDC

MODEL TS-34 Piezo Buzzer Station



- Buzzer is mounted on single gang stainless steel plate
- Sound level 85dB @ 3 feet
- Operates on 6 to 28VDC
- Other standard plate finishes are available
- Custom screening is available

MODEL TS-34N Narrow Buzzer Station



- Buzzer is mounted on 1-3/4" stainless steel plate
- Sound level 85dB @ 3 feet
- Operates on 6 to 28VDC
- Other plate finishes available
- Custom screening available

MODEL TS-41 Buzzer Station



- Buzzer is mounted on single gang stainless steel plate
- Sound level 85dB @ 3 feet
- Operates on 6 to 28VDC
- Other plate finishes available
- Custom screening available

MODEL TS-42 Buzzer Station



- Buzzer is mounted on single gang stainless steel plate
- Sound level 85dB @ 3 feet
- Operates on 12/24VAC or VDC
- Custom screening available

WIRELESS TRANSMITTERS AND RECEIVERS

Limited Lifetime Warranty

MODELS RT-1 AND RT-3



- RT-1 Kit includes one channel receiver and two transmitters with mount and keychain
- RT-3 Kit includes three channel receivers, one transmitter with mount and keychain
- Transmitter mounts allows for mounting under a desk or on a wall
- 12" antenna allows for up to 300' of range
- Rolling code with more than one billion code combinations
- Latching option allows you to keep doors unlocked until you press the button again
- Receiver can be controlled by up to thirty transmitters and has a five second momentary output
- Additional transmitter (**RT-1T**), transmitter with two wire leads (**RT-1TW**), and extra three channel receiver (**RT-3R**) available

POWER SUPPLIES & TRANSFERS

Limited Lifetime Warranty

MODEL APS-200

UL Listed Access Control Power Supply



- 2 Amp Power Supply mounted in UL listed enclosure
- Tolerates brownout or overvoltage input +/- 15% of nominal voltage
- Thermal shutdown protection with auto restart
- Circuit breaker protects against overcurrent and reverse battery faults (batteries sold separately)
- Dedicated battery charging circuit prevents overvoltage on locking devices
- Low noise design provides better than linear performance

Options:

- **APS-2004C** 2 Amp Power Supply with one PD4C, four output PTC protected distribution boards
- **APS-200FT** 2 Amp Power Supply with one PDFT fire relay module

MODELS DL-1 AND DL-2

Armored Door Loops



- 18" long armored door loop
- Transfer low-voltage current from frame to door
- **DL-1**: .250 I.D. steel; white and brown plastic end caps
- **DL-2**: rugged .375 I.D. steel; aluminum alloy end caps
- **DL-2ELECTRO** with Electrolynx connector

We put the custom in customization.



Alarm Controls offers the most extensive range of door control switch customization in the industry. Additionally there are no minimum order quantities or long wait times like other manufacturers.



To learn more about our affordable, customized solutions visit www.alarmcontrols.com or call 800.645.5538

AlarmControls.com

www.alarmcontrols.com

ALARM CONTROLS

ASSA ABLOY

Experience a safer and more open world **27**

USA

(p) 800.645.5538 | (f) 631.586.6500
alarmcontrols.com

customerservice.alarmcontrols@assaabloy.com
techsupport.alarmcontrols@assaabloy.com

Custom Product Inquiries

custom.alarmcontrols@assaabloy.com

CANADA

(p) 800.461.3007 | (f) 800.461.8989
assaabloydss.ca

Customer Support in Canada

sales.dss.ca@assaabloy.com

alarmcontrols.com



ASSA ABLOY

Experience a safer
and more open world

The ASSA ABLOY Group is the global leader
in access solutions. Every day we help
people feel safe, secure and experience
a more open world.

Patent pending and/or patent www.assaabloydss.com/patents

Copyright © 2023, Hanchett Entry Systems, Inc., an ASSA ABLOY Group company.
All rights reserved. Reproduction in whole or in part without the express written
permission of Hanchett Entry Systems, Inc. is prohibited. AC-040-0323

Printed in the U.S.A.