



# Architectural Hardware 2022 Product Catalog

Experience a safer  
and more open world



4590

## Deadlatch Paddle

The 4590 Deadlatch Paddle is an ergonomically-friendly alternative to a knob or lever handle. Operate with a simple push or pull.

### Function

An alternative to knob or lever handles. Makes opening a latched door as natural as opening an unlatched one – just push or pull in the direction in which the door swings. Compatible with any Adams Rite 4300, 4500 or 4900 Series Deadlatch, MS+1890 Deadlock/Deadlatch, or 2190/2290 Interconnected Deadbolt/Deadlatch.

### Operation

Available in four configurations: push left, push right, pull left, and pull right.



## Features

### Paddle

Extruded aluminum.

### Escutcheons

Zinc alloy with black finish. Secured to door stile with special binder posts that extend into the escutcheon to rigidly resist torque loads in any direction.

### Cam Plug

Furnished for use with 4300, 4500 and 4900 Series Deadlatches. Cam plug not for use with MS+1890 Deadlock/Deadlatch or 2190/2290 Interconnected Deadbolt/Deadlatch. Secured in latch body by cylinder set screw, plug is also rigidly tied to escutcheon by hardened steel pins.

### Standard Package

Individually boxed with mounting hardware. Units for 4300, 4500 or 4900 Series Deadlatches include cam plug.

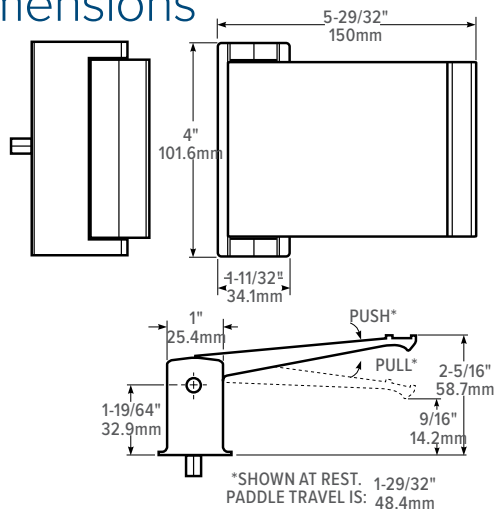
### Shipping weight

1-1/2 lb [0.68 kg].

## Options

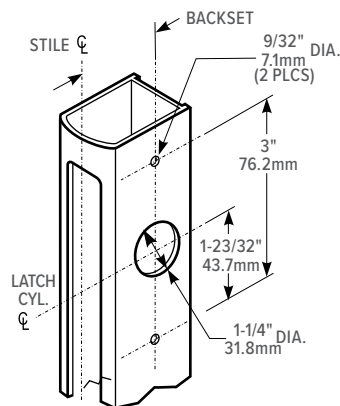
- First dash number specifies operation, handing and compatible latch. If required, use second dash number to specify non-standard units for doors thicker than 1-3/4" [44.5 mm]. Please see configuration table or contact factory for more information.
- Available in choice of 313 Dark bronze anodized, 335 Black anodized, 628 Clear anodized.

## Dimensions

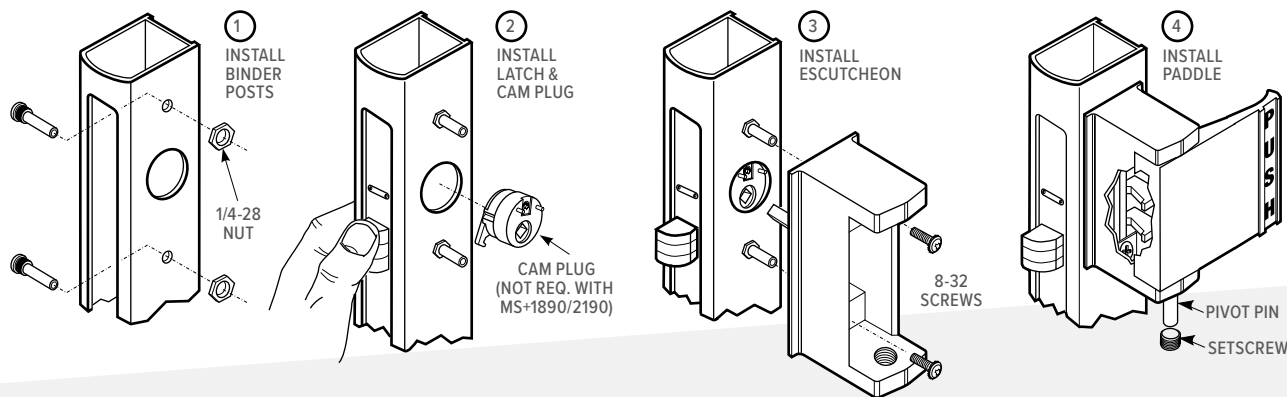


## Stile Preparation

For 4500/4900 latches, see MS+1890/2190 for different hole pattern





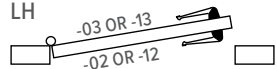
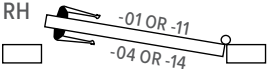


## Installation



## How to Order & Compatible Products

**4590 Deadlatch Paddle:** Specify quantity and the following information. Order related products separately.

MODEL	OPERATION			DOOR THICKNESS		FINISH*				
4590	02			-00		-313				
	FIRST DASH FOR LATCH SERIES	OPERATION	USE	For 4300, 4500, 4900 Series Deadlatches	For MS+1890, 2190	313 Dark Bronze Anodized				
	-01 4300/4500/4900	PULL TO LEFT		00 1-3/4"	00 1-3/4"	335 Black Anodized				
	-11 MS+1890/2190			01 1-13/16" to 2"	01 1-3/4" to 2-1/4"	628 Clear Anodized				
	-02 4300/4500/4900	PUSH TO LEFT		02 2-1/4" to 2-1/2"	02 2-5/16" to 2-1/2"					
	-12 MS+1890/2190			03 2-3/4" to 3"	03 2-9/16" to 2-3/4"					
	-03 4300/4500/4900	PULL TO RIGHT		04 3-1/4"						
	-13 MS+1890/2190									
	-04 4300/4500/4900	PUSH TO RIGHT		Outside of right hand door or inside of left hand reverse						
	-14 MS+1890/2190									
<div>LH</div> 										
<div>RH</div> 										

\*Finish applied to paddle assembly only, not escutcheon.

### COMPATIBLE

DEADLOCKS	DEADLATCHES
MS+1890 Deadlock/Latch, 2190 Series Interconnected Deadbolt/Deadlatch	4300 Electrified Deadlatches, 4510, 4530, 4900, 4920AN Series Deadlatches.

Experience a safer  
and more open world

