



The #1 Strongest BBQ FRAME KITS on Earth!

#1 DIY Outdoor Kitchen Framing System

800-776-9803

Open M-F 9am—4pm PST. We Ship Nationwide!

We Use Real Steel Not Cheap Studs or Aluminum



Authorized Dealer For Connectubes™



- **NEW Telescopic Modules and cutout kits WOW!!!**
- **Build a Super Strong BBQ Frame Fast & Easy!**
- **No Welding—Just use our Couplers & Screws**
- **All Weather Conditions Non-Combustible**
- **Great for Homeowners & Contractors**

www.BbqTubes.com





#1 DIY Outdoor Kitchen System in America



Our system uses Telescopic Steel Tubes to help you avoid cutting, Making assembly fast & easy!



HEAVY DUTY! We placed this pallet of steel weighing 1494 lbs on top of our 4 ft module.

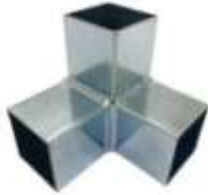


Steel Couplers allow you to build a real tubular steel frame without welding. It is as easy to assemble as Legos.

No other DIY Outdoor Kitchen System can come close to the BBQ Tube System. Other systems use thin aluminum or non-structural steel studs. Our BBQ Tube system uses Real Tubular Steel that with our Steel couplers can be joined together without welding. **Our telescoping Tubes helps you avoid cutting.** Our system is the best value and comparable in price to steel stud systems that require lots of cutting. **Beware of expensive prefab frames** that come with cement board. They charge ridiculous prices when cement board is only \$10 a sheet at home depot. It is always best to install cement board yourself and save the extra cost. Also cement board kits can not be adjusted in size to fit your landscape like our frame kits. **You will always achieve much better results building your frame on site first and then installing the cement board.**



BBQ TUBE ADVANTAGE



Our Couplings Allow You To Assemble A Real Steel Frame Without Welding that's 10 Times Stronger than cheap studs. This is **Heavy Duty!!!**



Connect Your Steel Frame Together
Easy Like Lego Blocks! This is so much Easier than trying to screw track and studs together...
Perfect for Homeowners! Faster for contractors...



BBQ TUBE FRAME VS Studs & Tracks with screw heads

A Smooth Finish with no screw heads allows your cement board to lay perfectly flat against the frame. This **prevents wavy walls** seen with track and stud islands. It also helps to prevent water damage.

Comparable in price to stud systems





STEEL FRAME

The steel frame for your outdoor kitchen is the foundation for everything you plan to do. It is very important to build a frame that is strong enough to support all the weight of cement board, stucco & stone siding, concrete & granite counter tops plus those valuable and heavy appliances...

Some people use steel studs, but these are not usually strong enough and create problems a couple years in the future. In addition, steel studs and tracks can be difficult and frustrating to screw together because they are not rigid like tubes. Steel Tubes are 10 times stronger than studs and are a much better choice for anyone who wants an outdoor kitchen that will last in all weather conditions. Our modular system with easy to use steel unions make our frame kits the #1 Choice in USA!



CEMENT BOARD

Cement board is sold at local building stores for approx. \$10 for a 3x5 sheet and \$20 for a 4x8 sheet. We like to use 1/2" thick. Preferred brands are Perma Base and Durock.

Cement board is easy to cut with a circular saw equipped with a masonry diamond blade or a grinder. When cutting cement board always wear breathing protection as the dust is dangerous to breathe.

Cement Board is attached to the frame with 1 1/4" self tapping cement board screws. (not sharp heads) We like to put screws 8" on center. Installing cement board is easy to do. Do not use wood as it is flammable.



Finish

Another advantage of building your own outdoor kitchen is taking the time to select the best finishing materials to match your home and landscape. For counter tops you can use tile, concrete, granite slabs, etc... For the siding stucco and faux stone veneer are the 2 most commonly used.

Some Homeowners sub contract out the finish work to professional contractors since they have already saved a lot of money building the frame and cement board on their own and want pros to do a perfect finish.

WARNING!!! BBQ ISLANDS MUST BE PROPERLY VENTED TO AVOID A GAS EXPLOSION

The Only Tubular Steel Frame You Can Screw Together

Super Strong



35" High
Standard
or
41" High
Bar Height

4 FT Long

32" Depth

NEW Telescoping Modules
Module Increases in Length for the perfect fit

AS SEEN ON
YouTube

FLUSH FINISH

For A flat level frame for cement board
to lay flat on. No screw heads! No Waves!
You can not do this with cheap steel studs & track!!!

Build It Fast with Telescoping Modules

We offer telescoping module kits. This makes it fun and easy to build large frames fast without cutting!

You Can Easily Trim Modules Down to a Shorter Length or Depth Before Assembly!



4 Ft Module (non telescoping) 35" high x 32" depth

PART# TUBE-MOD4

Includes: 8 ea 3 way corner couplers, 12 ea 1 way couplers, 4 end frame tubes 28 3/4"
4 each Length wall Tubes 44 3/4", 10 each VT vertical tubes



8 Ft Module (non telescoping) 35" high x 32" depth

PART# TUBE-MOD8

Includes: 8 ea 3 way corner couplers, 20 ea 1 way couplers, 4 end frame tubes 28 3/4"
8 each Length Wall tubes 44.75" plus 4 union couplers, 14 VT vertical tubes

4ft-6ft Telescoping Module —35" high x 32" depth

PART# Tube-MOD4T

Includes: 8 ea 3 way corner couplers, 12 ea 1 way couplers, 4 ea end frame tubes 28 3/4"
4 ea length wall tubes 41.75"x37mm, 4 each length wall tubes 28.75"x40mm,
10 ea VT vertical tubes, 5ea adaptor tubes

Telescoping Module 48-96"—35" high x 32" depth

PART# Tube-MOD8T

Includes: 8 ea 3 way corner couplers, 20 ea 1 way couplers, 4 ea end frame tubes 28 3/4",
4 ea length wall tubes 48"x37mm, 4 ea length wall tubes 48"x40mm, 14 ea VT vertical
tubes, 5 each adaptor tubes



KNOCKOUT
Use Our Telescoping Modules
For the perfect fit!

4FT & 8FT Modules

BAR HEIGHT 41" HIGH

Bar Height Modules are normally used for serving island not to house grills etc unless you are over 6 feet tall.



4 Ft Module Bar Height—Heavy Duty! (Non-Telescoping) Part# Tube-MOD4BH
Includes: 8 ea 3 way corner couplers, 12 ea 1 way couplers, 4 ea end frame tubes for 32" depth, 4 each length wall tubes, 10 ea vertical tubes bar height

4ft-6ft Telescoping Bar Height Module —HEAVY DUTY! PART# Tube-MOD4TBH
Includes: 8 ea 3 way corner couplers, 12 ea 1 way couplers, 4 ea end frame tubes 28 3/4" 4 ea length wall tubes 41.75"x37mm, 4 each length wall tubes 28.75"x40mm, 10 ea VT vertical tubes, 5ea adaptor tubes



Telescoping Module 48-96"—HEAVY DUTY! PART# Tube-MOD8TBH
Includes: 8 ea 3 way corner couplers, 20 ea 1 way couplers, 4ea 3 way flats, 4 ea end frame tubes 28 3/4", 4 ea length wall tubes 48"x37mm, 4 ea length wall tubes 28.75"x40mm, 4 each tubes 14"x40mm, 16 ea VT vertical tubes, 5 each adaptor tubes

A Bar Height 41" High Frame

B Standard Height 35" Frame





No Cut Grill Module

Grill Module (max grill width 48") Part# Tube-MODG

This is not a cutout kit. It is an entire module designed for your grill. The main advantage of this design is you do not have to use a dangerous grinder to cutout the top track for the grill to slide in like you do with our competitors systems that use track and studs.

Add more modules for counter top space and additional components as desired. It is easy to connect modules together with connector plates. Use 2 connector plates per union of modules.

Connects together like Lego's!



← 48" Maximum cutout width



Appliance Cutout Kits

Actual Appliances Not Included

Each of Your Chosen Appliances Require a cutout kit for support within the frame. These kits are extra length. You will trim to fit.



Grill Cutout Kit



Slide in Side Burner



Drop in Side Burner



Fridge



Grill Cart



NO CUT

**Telescoping
Tubes**

No or little Cuts when
with our telescoping
tube system



Double Door



Single Door



Vertical Drawers



Trash/Propane Drawer



Enclosed Kamado Kit



Combo Kit



Bar Center Kit



Sink



Ice Bin



Keg

Our Cutout Kits are Universal and work with all brands designed for Built In BBQ Islands.

Back Splash & Overhangs



Back Splash Kits TUB-BS (Easy to Assemble)

We offer 4ft long x 6" high back splash frame kits. This is a separate frame that attaches to the back of your standard 35" high module frame. It will add approx. 1 3/4" to the foot print of your 32" frame. Just buy enough 4 ft sections to complete the back splash for your frame. When you get to the last section you can easily trim to fit for a custom length.



14" Over Hang Kits part# TUB-OH

We offer 4ft long x 14" deep over hang frame kits. You can attach this kit to a back splash kit creating a split bar counter. Or you can attach it level to the top of your module creating a level over hang.

This kit requires hidden bar supports to reinforce the overhang. You will need 2 hidden bar support for each section of over hang. **SOLD SEPARATE**

Wrap Around Back Splash & Split Bar

We also offer kits that will allow you to build around the corner and end.



Needed Extras



Self Tapping Framing Screws



Self Tapping Cement Board Screws



Heavy Duty Leveling Feet
designed to support the heavy
weight of a bbq island.
Includes mounting holes



Stainless Steel Air Vents



Connector Plates



Composite Shims



Self Tapping Hex Head Screws
use to screw frame together
no predrilling holes needed
when using an impact drill

Tools



Circular saw



IMPACT DRILL



Chop saw



Measuring Tape



3" Magnetic Drill Bit Holder



Face Shield



Safety Glasses



Sharpie



GLOVES



MAGNETIC LEVEL



HOW 2 ORDER THE BBQ TUBES DIY SYSTEM?



1. Measure your space for the lengths of each wing of your outdoor kitchen. Buy enough modules to frame in your space.
2. Make a list of your appliances. Do not over crowd appliances. Allow minimum of 4" between each appliance. Select matching appliance cutout kits. If you have a door order a door cutout kit. If you have a fridge order a fridge cutout kit and so on... All cutouts are pre-cut for our 32" depth modules. Width parts now include our telescoping tubes to avoid cutting. To Avoid cutting as much as possible use 32" depth.
3. Add back splash and over hang kits. Sold in 4ft sections.
4. Needed Extras. Screws, air vents, leveling feet, cement board, etc are all sold separate. We recommend you order our screws and vents. We do not sell cement board. It is too heavy to ship.

NEED HELP TO ORDER? USE OUR SHOPPING LIST SERVICE



NO WELDING REQUIRED

ConnecTube Couplers used instead



USE 32" Depth Modules
for the least cutting



Use an Impact Drill
with self tapping screws



We Ship Nationwide

ALLOW 3-7 DAYS FOR SHIPPING

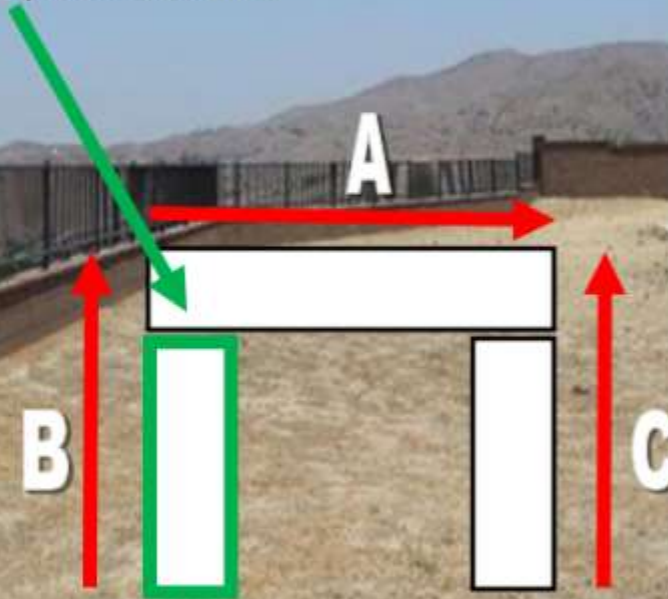
MEASURE YOUR SPACE

TIP: Try to Plan your island with 4Ft & 8Ft Modules to eliminate the need for trimming modules

When you butt module B up against the side of module A you lose usable space from module A. for appliances. Make sure you calculate this!

Allow Extra 4-8" of space per appliance. Do not overcrowd.

We are not responsible if your appliances do not fit within your space.



Select Enough Modules to fill your space. If needed you will trim the last module on each leg to fit.

Select Design:

Straight L Island U Island

Measure Maximum Lengths:

A: _____

B: _____

C: _____

Circle Which Wings Have Back Splash

A B C

Circle Which Wings have 12" Over Hang

A B C

Note" you combine back splash and over hang kits to create a split bar counter

KEEP IT SIMPLE!

Plan 32" Depth to avoid extra cutting.



MODULES: A = 8ft Module B= 8ft Module C= 4ft Module

BACK SPLASH B = 2ea 4ft back splash kit + 2 wrap around split bar kits

SPLIT BAR D&E = 4ea back splash kits + 4 ea Over hang kits

F= Sink Cutout Kit

G= Grill Cutout Kit

H, J and K = Double Door Cutout Kits

I = Fridge Cutout Kit

4 lbs framing screws

4 lbs cement board screws

5 each CTT's (we used one centered in the bottom of each 8ft module and the rest in the counter tops where there was large empty space.

6 stainless steel air vents

4 connector plates (2 per union of modules)

16 Heavy Duty Leveling Feet

8 Structural Hidden Bar Supports +

MODULES

4 Ft Straight Module —(non-telescoping) 35" high x 32" depth	TUBE-MOD4		
8 Ft Straight Module (non-telescoping) 35" high x 32" depth	TUBE-MOD8		
4ft-6ft Telescoping Module — 35" high x 32" depth	TUBE-MOD4T		
48-96" Telescoping Module — 35" high x 32" depth	TUBE-MOD8T		
Diagonal Corner Module with Sink/Counter top kit	TUBE-DCMOD		
Egg Smoker Platform for Diagonal Corner Module	TUBE-EGGPLAT		
Smoker Module	TUBE-MODSMOKER		
4 Ft BAR HEIGHT Module —(non-telescoping) 41"highx32" depth	TUBE-MOD4-BH		
4ft-6ft Telescoping BAR HEIGHT Module —41" high x32" depth	TUBE-MOD4-BHT		
48-96" Telescoping BAR HEIGHT Module —41" x 32" depth	TUBE-MOD8-BHT		
NO CUT GRILL MODULE — Standard Height.	TUBE-MODG		

Note: We reserve the right to change pricing at any time. Final price is the price displayed online in our internet store.



Telescopic Modules— With telescoping modules you can adjust the length before assembly without cutting. This can be a big advantage if you need a few extra inches to fit an appliance or to achieve the perfect length for your landscape.

Non-Telescoping Modules— These modules can be trimmed to a shorter length by cutting the length wall tubes before assembly.

Note: to make a shorter depth frame you will need to trim the 4 end frame tubes or buy separately telescoping CTT's.

Warning: we are not responsible if you make a custom size that is too short to fit your appliances.

APPLIANCE CUTOUTS

	GRILL CUTOUT (range 22.75-37.25)	TUBE-CO-Grill		
	XL GRILL CUTOUT (range 37.75-48")	TUBE-CO-XLGRILL		
	XXL GRILL CUTOUT (range 48"-54")	TUBE-CO-Grillxxl		
	GRILL CART CUTOUT (range 48-64") For self standing grills on a cart	TUBE-CO-CART		
	GRILL PLATFORM add on kit for a few grills that need a platform	TUBE-CO-GP		
	SLIDE IN SIDE BURNER (range 10.5"-16.5") control knobs face forward	TUBE-CO-SB		
	Slide in Side burner Platform (platform only)	TUBE-CO-SBP		
	DROP IN SIDE BURNER (range 10.5"-16.5") control knobs face sky	TUBE-CO-DSB		
	POWER BURNER No Drop (range 15.75"-22.25") sits in counter top	TUBE-CO-PB		
	POWER BURNER with 12" Drop Down (range 15.75-22.25")	TUBE-CO-DDB		
	SINGLE DOOR CUTOUT (range 12"-17.5")	TUBE-CO-SD		

	Horizontal & Double Door Cutout (range 22.75-37.25)	TUBE-CO-DD		
	FRIDGE Cutout No telescoping parts	TUBE-CO-F		
	KEG Cutout No telescoping parts	Tube-Co-Keg		
	Vertical Drawer (range 12-17.5")	TUBE-CO-VDRW		
	TRASH/PROPANE Drawer (range 12"-17.5")	TUBE-CO-TR/PRO		
	COMBOS (range 22.75"-37.25")	TUBE-CO-COMBO		
	TRIPLE COMBO (range 27.75"-48")	TUBE-CO-TCombo		
	SMALL SINK/ SMALL ICE BIN (range 12-17.5")	TUBE-CO-SinkSM		

MSRP

	MEDIUM SINK (range 22.75"-29.25")	Tube-CO-SinkM		
	LARGE SINK (range 22.75"-37.25")	TUBE-CO-SinkL		
	STANDARD DROP IN ICE BIN (range 18"-33")	TUBE-CO-ICE		
	SMALL BAR CENTERS (range 15.75"-22.25")	TUBE-CO-BarSM		
	LARGE BAR CENTERS (range 22.75"-37.25")	TUBE-CO-BARL		
	OPEN Egg Cutout	TUBE-CO-EGG		

UPGRADES

	4 Ft BACK SPLASH 6" HIGH (Cut to fit)	TUBE-BS		
	4 ft of 14" Over Hang	TUBE-OH		
	Wrap Around Back Splash	TUBE-WABS		
	Wrap Around Split Bar Counter Kit	BS-WA-2sb		



NEEDED EXTRAS

	CTT Counter Top Tube 28 3/4" NON-TELESCOPING for 32" modules	TUBE-CTT		
	CTT Telescoping (range 22.75"-29") for custom size modules	NE-CTT-TS		
	1 Lb Hex Head Self Tapping Screws (use for frame)	NE-HS1		
	4 LB Hex Head Framing Screws (use for frame)	NE-HS4		
	Framing Screws with Low Profile Head 1 lbs box <i>use to attach Structural Hidden Bar Supports</i>	NE-LS-1		
	Heavy Duty Level Foot	TUBE-FEET		
	Premium Stainless Steel Air Vent	NE-vent		
	4 Ft Galvanized Steel Tube 40mm	TUBE-4FT		
	VERTICAL TUBE with 2 one way couplers	NE-VTT		
	VERTICAL TUBE BAR HEIGHT with 2 one way couplers	NE-VTT-BH		
	Structural Hidden Bar Support	NE-SHBS		
	CONNECTOR PLATES (use 2 per union of modules)	CONNPL		
	CUSTOM ANGLE TUBE KIT	NE-CA		
	PREMIUM CEMENT BOARD STUCCO (5 gallons) white color	NE-STUC		
	1 way coupling	1way		
	3 way Corner Coupling	3wc		
	3 way FLAT coupling	3wf		
	4 Way Coupling	4wc-1		

PART #

	90 degree coupling	90		
	Below Grill Tubes 3/4" (2 pack)	TUBE-34TUBE		
	Composite Shims(1 pack of 10 pcs)	NE-SHIM		
	Bar Gap Filler	NE-BGF		
	Catcher Track 4ft	NE-CT4		
	Screw Socket for Hex Head Screws	NE-SOCKET		
	Square Drill Bit for Cement Board Screws	NE-SQDB		
	Cement Board Screws (1 lbs box self tapping)	NE-CB1		
	4 lbs box Cement Board Screws	NE-CB4		
	Stucco Adhesive - 1 gallon	NE-STUCADH		



Our Clients Build Amazing Outdoor Kitchens



ROUNDED ISLANDS LOOK GREAT

But they cost more and are more difficult to build.

If you plan to build a rounded island first make sure you are able to buy PERMA BASE FLEX Cement board. It is the only cement board designed to bend a full radius. It is not sold at home depot or lowes. It must say FLEX.



FULL SUPPORT WEBSITE AT:

www.BbqTubeSupport.com

FREE Password with orders over \$400 in frame kits

SHOP ONLINE AT www.BbqTubes.com

We reserve the right to change prices after publication. Final prices are online.