

 **northtac**[®]

QILIN SERIES

AEA
PRECISION AIRGUNS

<http://www.northtac.com>

CONTENTS

SAFETY WARNINGS & IMPORTANT NOTICES	2
Exploded Diagram	7
Air Filling Procedure	15
LOADING, COCKING & FIRING	17
CLEANING & MAINTENANCE	20
Exterior Cleaning	20
STORAGE	22
WARRANTY — ONE-YEAR LIMITED WARRANTY	24
Manufacturer' s Rights	26

SAFETY WARNINGS & IMPORTANT NOTICES



Read this manual completely before operating your air rifle.
Failure to follow these instructions may cause damage, serious injury, or death.

General Safety Rules

Always treat the rifle as if it is loaded.

Never point the muzzle at anything you do not intend to shoot.

Keep your finger off the trigger until ready to fire.

Always maintain muzzle control, even if you slip or fall.

Use only in a safe, controlled environment with a confirmed backstop.

Wear ANSI-rated eye protection at all times.

Authorized Users

This PCP rifle is intended for adults only or for use under strict adult supervision.

This is not a toy.

Correct Ammunition

- Use lead slugs only of the correct caliber.
- Do not use steel, alloy, or homemade projectiles.
- Do not reuse slugs.

Using unauthorized projectiles may damage the rifle and void the warranty.

Never Fire Without Air

Do NOT fire the rifle when:

- The air cylinder is empty
- The air cylinder is removed

Dry-firing without air may cause internal damage.

No Modification

Do not modify, disassemble, tune, polish, drill, or alter any internal component.

This includes the trigger, valve, hammer, regulator, and safety system.

Unauthorized modification voids the manufacturer's warranty.

AIR FILLING & PRESSURE GUIDELINES

Approved Air Only

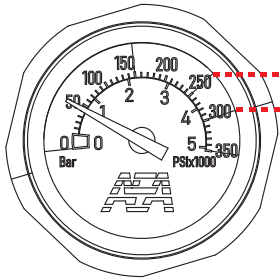
Fill the rifle with dry, filtered compressed air only.

Never use

Oxygen, Hydrogen, Acetylene, CO₂, Nitrogen, or any other gas.

Using improper gases may cause explosion, severe injury, or death.

Filling Pressure



OPTIMAL FILL PRESSURE:250 BAR/3500PSI
MAX FILL PRESSURE 3100BAR/4500PSI

Maximum fill pressure: 310 BAR / 4500 PSI

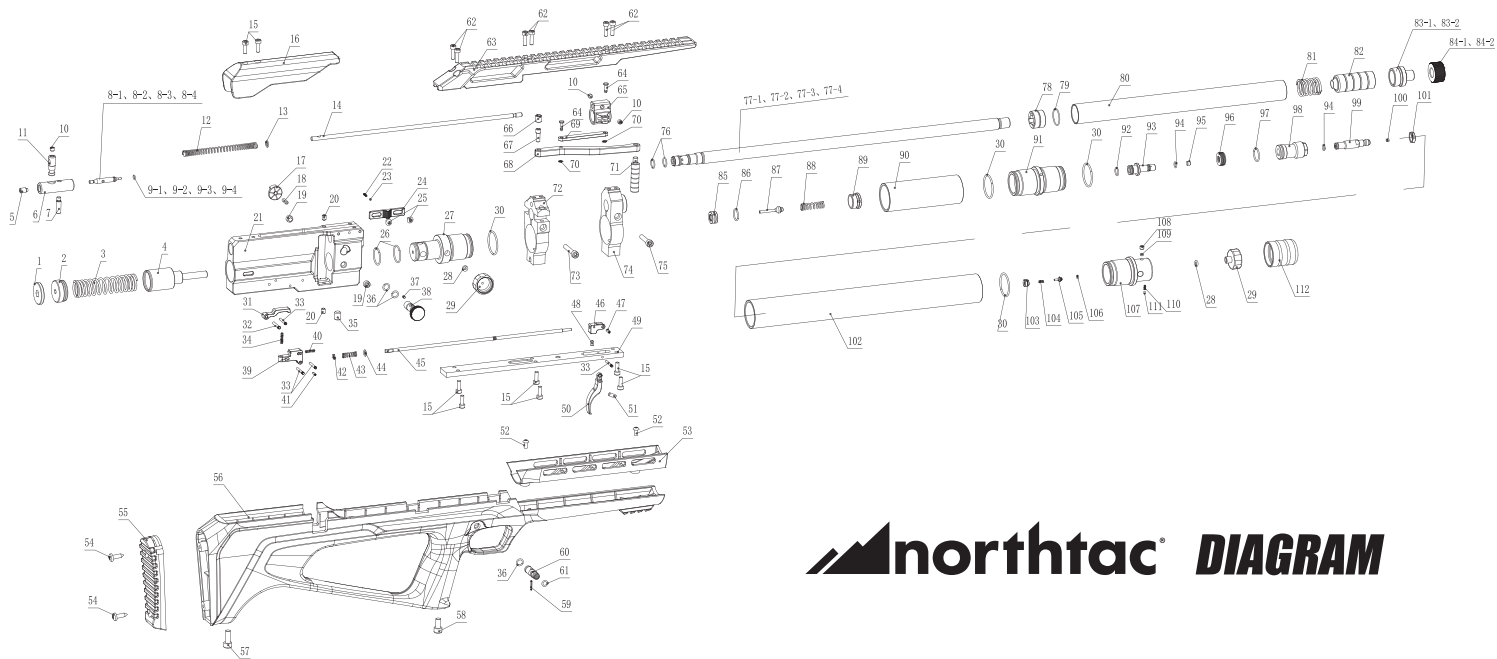
Recommended operating pressure: 250 BAR / 3500 PSI

Overfilling is not covered under warranty.

Air Tank Inspection

Inspect and recertify air tanks according to the dates and intervals printed on the tank label.

Exploded Diagram



northtac *DIAGRAM*

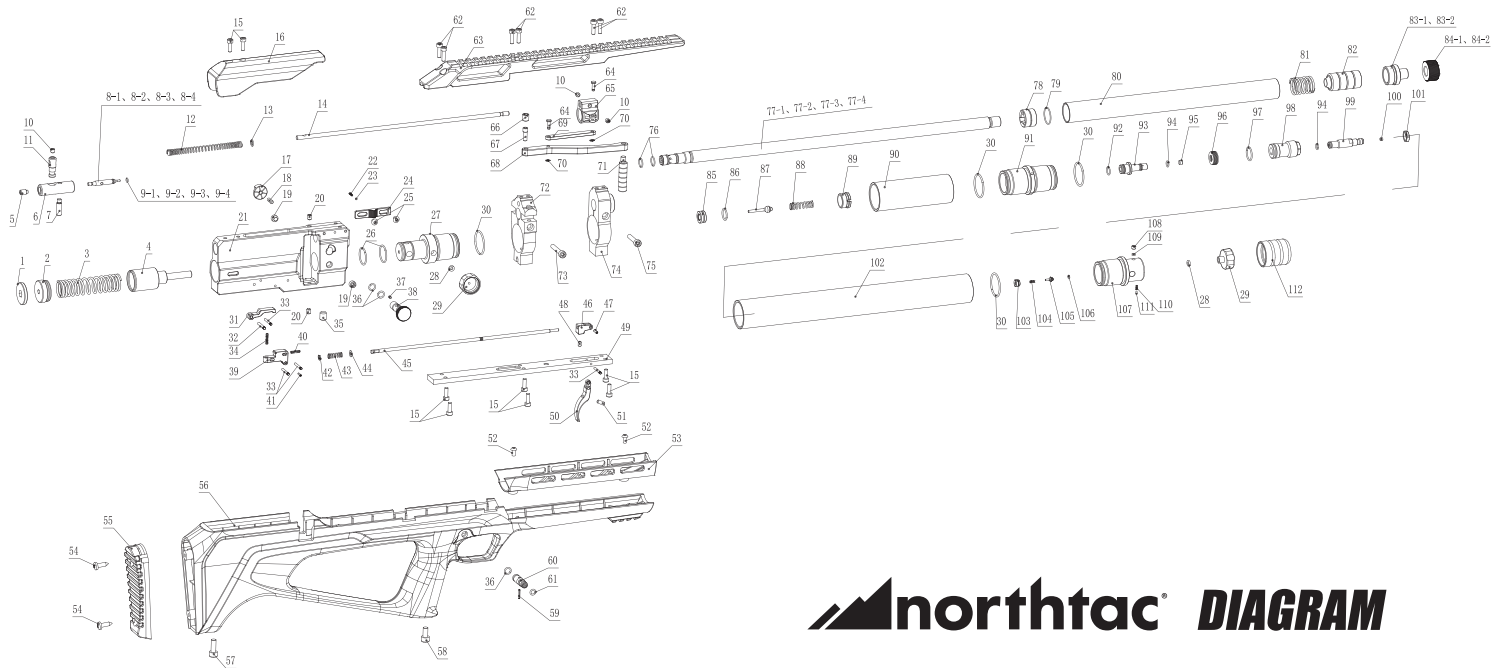
Revises Dec 2026

northtac® 18 Inches PARTS LIST

DIAGRAM NO.	DISCRPTION	DIAGRAM NO.	DISCRPTION	DIAGRAM NO.	DISCRPTION
1	1JP-14A(1)	45	1JP-27A(1)	90	1JP-63A(1)
2	1JP-13A(1)	46	1EQ49A	91	1JP-9B1A(1)
3	1JP-15A(1)	47	GB/T 879.3-2000-3X8	92	O -ring 8.5X1.2
4	1JP-16A(1)	48	GB/T 80-2007-M4X6	93	1JP-9B2A(1)
5	GB/T 79-2007-M6X10	49	1JP-25A(1)	94	O -ring 5.6X1.2
6	1JP-17A(1)	50	1JP-28A(1)	95	1JP-9B5A(1)
7	1JP-18A(1)	51	GB/T 77-2007-M4X10	96	GB/T 1972-2005 16X8.2X0.9X1.25-C1
8-1	1JP-68A(1)	52	GB/T 70.2-2008-M4X8	97	O -ring 15X1.5
8-2	1JP-19A(1)	53	1JP-62A(1)	98	1JP-9B4A(1)
8-3	1JP-20A(1)	54	GB/T 845-1985-ST4.8X16	99	1JP-9B3A(1)
8-4	1JP-21A(1)	55	1JP-61B(1)	100	1MCAR1B19A
9-1	O -ring 2.8X1.2	56	1JP-60B(1)	101	1JP-9B6A(1)
9-2	O -ring 3.5X1.2	57	GB/T 70.1-2008-M6X16	102	1JP-38A(1)
9-3	O -ring 4.2X1.2	58	GB/T 70.1-2008-M6X12	103	HP-X-13-7.62-14-03
9-4	O -ring 5.6X1.2	59	GB/T 879.3-2000-2X12	104	DEF-25-X-18-01-13
10	GB/T 80-2007-M5X5	60	1JP-12A(1)	105	HP-X-13-7.62-A-14-02
11	1JP-2A(1)	61	O -ring 5X1.5	106	O -ring 2.6X1.2
12	1JP-46A(1)	62	Inner Hexagonal Cylinder Head Screw M4X14	107	1JP-8B1A(1)
13	1JP-70A(1)	63	1JP-6A(1)	108	GB/T 77-2007-M5X4
14	1JP-26A(1)	64	1JP-1B5A(1)	109	1JP-8B2A(1)
15	GB/T 70.1-2008-M4X12	65	1JP-1B1A(1)	110	1SA3B11A-D
16	1JP-59A(1)	66	1JP-30A(1)	111	GB/T 308.1-2013
17	1XD12B1A	67	1JP-31A(1)	112	1JP-8B3A(1)
18	GB/T 77-2007-M4X12	68	1JP-1B2A(1)		
19	GB/T 80-2007-M8X6	69	1JP-1B3A(1)		
20	Inner Hexagonal Ball End Set Screw M5X6	70	GB/T 896-1986-2.5		
21	1JP-5A(1)	71	1JP-1B4A(1)		
22	1JP-75A(1)	72	1JP-3A(1)		
23	GB/T 308.1-2013	73	GB/T 70.1-2008-M5X30		
24	1JP-45A(1)	74	1JP-4A(1)		
25	1JP-29A(1)	75	GB/T 70.1-2008-M5X25		
26	O -ring 19.5X1.5	76	O -ring 10X1.2		
27	1JP-7B1A(1)	77-1	1JP-64A(1)		
28	CH-BBP-30-12.7-31-03	77-2	1JP-47A(1)		
29	CH-BBP-30-12.7-31-02	77-3	1JP-48A(1)		
30	O -ring 27X1.8	77-4	1JP-49A(1)		
31	1JP-10A(1)	78	1JP-34A(1)		
32	Flower Pin Flat Head 3X20-SUS 304	79	O -ring 19.5X1.2		
33	Flower Pin Flat Head 2.5X20-SUS 304	80	1JP-33A(1)		
34	1CY-17A(1)	81	1JP-35A(1)		
35	GB/T 77-2007-M8X10	82	1JP-36A(1)		
36	O -ring 6.5X1.5	83-1	1JP-37A(1)		
37	Parallel pins, unhardened steel or austenitic stainless steel, Ø2.5 h6 x 4	83-2	1JP-73A(1)		
38	1JP-39A(1)	84-1	1JP-72A(1)		
39	1JP-11A(1)	84-2	1JP-74A(1)		
40	DEF-25-X-18-03-06	85	1JP-7B2A(1)		
41	GB/T 879.3-2000-2X8	86	O -ring 12.5X1.5		
42	GB/T 896-1986-3	87	1JP-7B4A(1)		
43	CH-BBP-30-12.7-24-05	88	CH-SBP-24-7.62-21-05		
44	GB/T 97.3-2000-4	89	1JP-7B3A(1)		

Revised Dec 2026

Exploded Diagram



northtac *DIAGRAM*

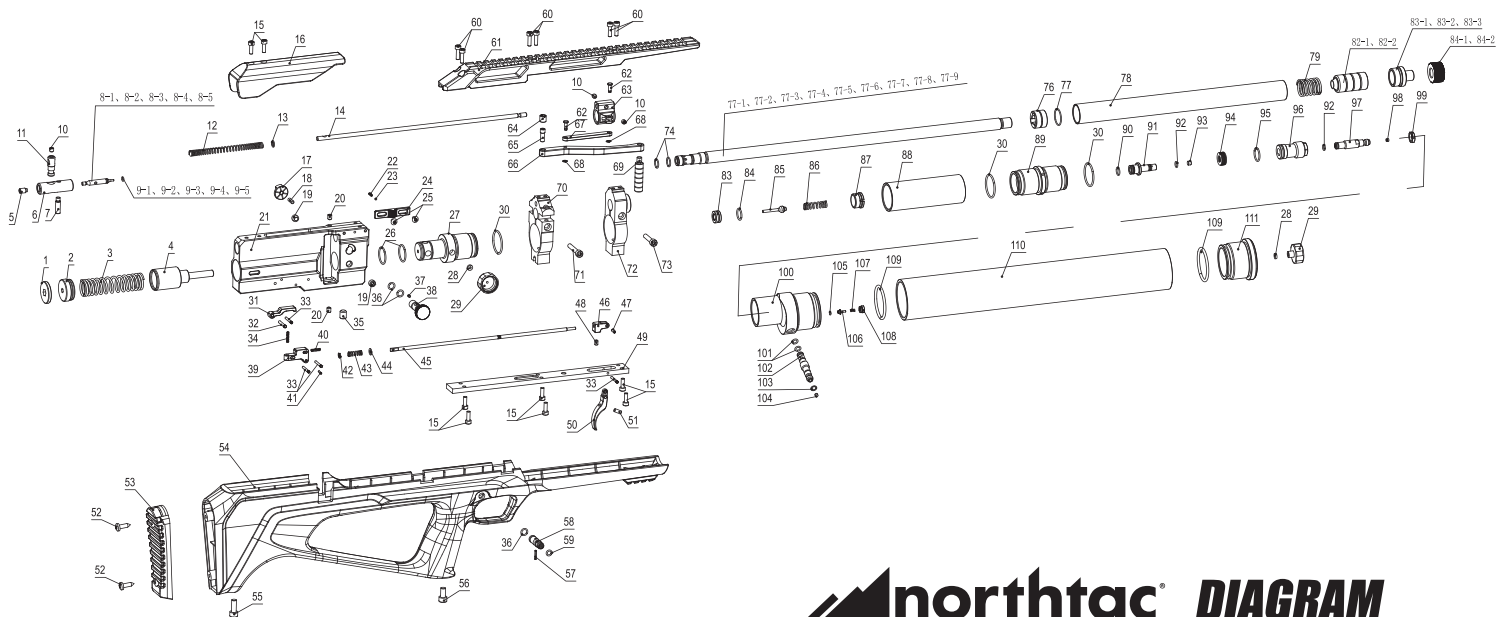
Revises Dec 2026

northtac® 24 Inches PARTS LIST

DIAGRAM NO.	DISCRPTION	DIAGRAM NO.	DISCRPTION	DIAGRAM NO.	DISCRPTION
1	1JP-14A(1)	45	1JP-27A(1)	90	1JP-63A(1)
2	1JP-13A(1)	46	1EQ49A	91	1JP-981A(1)
3	1JP-15A(1)	47	GB/T 879.3-2000-3X8	92	O-ring 8.5X1.2
4	1JP-16A(1)	48	GB/T 80-2007-M4X6	93	1JP-982A(1)
5	GB/T 79-2007-M6X10	49	1JP-25A(1)	94	O-ring 5.6X1.2
6	1JP-17A(1)	50	1JP-28A(1)	95	1JP-985A(1)
7	1JP-18A(1)	51	GB/T 77-2007-M4X10	96	GB/T 1972-2005 16X8.2X0.9X1.25-C1
8-1	1JP-68A(1)	52	GB/T 70.2-2008-M4X8	97	O-ring 15X1.5
8-2	1JP-19A(1)	53	1JP-62A(1)	98	1JP-984A(1)
8-3	1JP-20A(1)	54	GB/T 845-1985-ST4.8X16	99	1JP-983A(1)
8-4	1JP-21A(1)	55	1JP-61B(1)	100	1MCAR1B19A
9-1	O-ring 2.8X1.2	56	1JP-60B(1)	101	1JP-986A(1)
9-2	O-ring 3.5X1.2	57	GB/T 70.1-2008-M6X16	102	1JP-43A(1)
9-3	O-ring 4.2X1.2	58	GB/T 70.1-2008-M6X12	103	HP-X-13-7.62-14-03
9-4	O-ring 5.6X1.2	59	GB/T 879.3-2000-2X12	104	DEF-25-X-18-01-13
10	GB/T 80-2007-M5X5	60	1JP-12A(1)	105	HP-X-13-7.62-A-14-02
11	1JP-2A(1)	61	O-ring 5X1.5	106	O-ring 2.6X1.2
12	1JP-46A(1)	62	Inner Hexagonal Cylinder Head Screw M4X14	107	1JP-881A(1)
13	1JP-70A(1)	63	1JP-6A(1)	108	GB/T 77-2007-M5X4
14	1JP-26A(1)	64	1JP-1B5A(1)	109	1JP-882A(1)
15	GB/T 70.1-2008-M4X12	65	1JP-1B1A(1)	110	1SA3B11A-D
16	1JP-59A(1)	66	1JP-30A(1)	111	GB/T 308.1-2013
17	1XD12B1A	67	1JP-31A(1)	112	1JP-883A(1)
18	GB/T 77-2007-M4X12	68	1JP-1B2A(1)		
19	GB/T 80-2007-M8X6	69	1JP-1B3A(1)		
20	Inner Hexagonal Ball End Set Screw M5X6	70	GB/T 896-1986-2.5		
21	1JP-5A(1)	71	1JP-1B4A(1)		
22	1JP-75A(1)	72	1JP-3A(1)		
23	GB/T 308.1-2013	73	GB/T 70.1-2008-M5X30		
24	1JP-45A(1)	74	1JP-4A(1)		
25	1JP-29A(1)	75	GB/T 70.1-2008-M5X25		
26	O-ring 19.5X1.5	76	O-ring 10X1.2		
27	1JP-7B1A(1)	77-1	1JP-65A(1)		
28	CH-BBP-30-12.7-31-03	77-2	1JP-50A(1)		
29	CH-BBP-30-12.7-31-02	77-3	1JP-51A(1)		
30	O-ring 27X1.8	77-4	1JP-52A(1)		
31	1JP-10A(1)	78	1JP-34A(1)		
32	Flower Pin Flat Head 3X20-SUS 304	79	O-ring 19.5X1.2		
33	Flower Pin Flat Head 2.5X20-SUS 304	80	1JP-42A(1)		
34	1CY-17A(1)	81	1JP-35A(1)		
35	GB/T 77-2007-M8X10	82	1JP-36A(1)		
36	O-ring 6.5X1.5	83-1	1JP-37A(1)		
37	Parallel pins, unhardened steel or austenitic stainless steel, 025 h6 x 4	83-2	1JP-73A(1)		
38	1JP-39A(1)	84-1	1JP-72A(1)		
39	1JP-11A(1)	84-2	1JP-74A(1)		
40	DEF-25-X-18-03-06	85	1JP-782A(1)		
41	GB/T 879.3-2000-2X8	86	O-ring 12.5X1.5		
42	GB/T 896-1986-3	87	1JP-784A(1)		
43	CH-BBP-30-12.7-24-05	88	CH-SBP-24-7.62-21-05		
44	GB/T 97.3-2000-4	89	1JP-783A(1)		

Revised Dec 2026

Exploded Diagram



northtac *DIAGRAM*

Revises Dec 2026

northtac® 28 Inches PARTS LIST

DIAGRAM NO.	DISCRPTION	DIAGRAM NO.	DISCRPTION	DIAGRAM NO.	DISCRPTION
1	1JP-14A(1)	43	CH-BBP-30-12.7-24-05	84-1	1JP-72A(1)
2	1JP-13A(1)	44	GB/T 97.3-2000-4	84-2	1JP-74A(1)
3	1JP-15A(1)	45	1JP-27A(1)	83	1JP-782A(1)
4	1JP-16A(1)	46	1EQ49A	84	O -ring 12.5X1.5
5	GB/T 79-2007-M6X10	47	GB/T 879.3-2000-3X8	85	1JP-784A(1)
6	1JP-17A(1)	48	GB/T 80-2007-M4X6	86	CH-SBP-24-7.62-21-05
7	1JP-18A(1)	49	1JP-25A(1)	87	1JP-783A(1)
8-1	1JP-68A(1)	50	1JP-28A(1)	88	1JP-63A(1)
8-2	1JP-19A(1)	51	GB/T 77-2007-M4X10	89	1JP-981A(1)
8-3	1JP-20A(1)	52	GB/T 845-1985-ST4.8X16	90	O -ring 8.5X1.2
8-4	1JP-21A(1)	53	1JP-61B(1)	91	1JP-982A(1)
8-5	1JP-77A(1)	54	1JP-60B(1)	92	O -ring 5.6X1.2
9-1	O -ring 2.8X1.2	55	GB/T 70.1-2008-M6X16	93	1JP-985A(1)
9-2	O -ring 3.5X1.2	56	GB/T 70.1-2008-M6X12	94	GB/T 1972-2005 16X8.2X0.9X1.25-C1
9-3	O -ring 4.2X1.2	57	GB/T 879.3-2000-2X12	95	O -ring 15X1.5
9-4	O -ring 5.6X1.2	58	1JP-12A(1)	96	1JP-984A(1)
9-5	O -ring 7X1.2	59	O -ring 5X1.5	97	1JP-983A(1)
10	GB/T 80-2007-M5X5	60	Inner Hexagonal Cylinder Head Screw M4X14	98	1MCAR1B19A
11	1JP-2A(1)	61	1JP-6A(1)	99	1JP-986A(1)
12	1JP-46A(1)	62	1JP-1B5A(1)	100	1JP-41A(1)
13	1JP-70A(1)	63	1JP-1B1A(1)	101	O -ring 5.4X1.4
14	1JP-26A(1)	64	1JP-30A(1)	102	TVJ-CQZ-8-02-01(1)
15	GB/T 70.1-2008-M4X12	65	1JP-31A(1)	103	O -ring 5.6X1.2
16	1JP-59A(1)	66	1JP-1B2A(1)	104	1MCAR1B19A
17	1XD12B1A	67	1JP-1B3A(1)	105	O -ring 2.6X1.2
18	GB/T 77-2007-M4X12	68	GB/T 896-1986-2.5	106	HP-X-13-7.62-A-14-02
19	GB/T 80-2007-M8X6	69	1JP-1B4A(1)	107	DEF-2S-X-18-01-13
20	Inner Hexagonal Ball End Set Screw M5X6	70	1JP-3A(1)	108	HP-X-13-7.62-14-03
21	1JP-5A(1)	71	GB/T 70.1-2008-M5X30	109	O -ring 38X3
22	1JP-75A(1)	72	1JP-4A(1)	110	HP-X-22-11.6-02
23	GB/T 308.1-2013	73	GB/T 70.1-2008-M5X25	111	1XD33B1A
24	1JP-45A(1)	74	O -ring 10X1.2		
25	1JP-29A(1)	77-1	1JP-66A(1)		
26	O -ring 19.5X1.5	77-2	1JP-53A(1)		
27	1JP-7B1A(1)	77-3	1JP-54A(1)		
28	CH-BBP-30-12.7-31-03	77-4	1JP-55A(1)		
29	CH-BBP-30-12.7-31-02	77-5	1JP-76A(1)		
30	O -ring 27X1.8	77-6	1JP-67A(1)		
31	1JP-10A(1)	77-7	1JP-58A(1)		
32	Flower Pin Flat Head 3X20-SUS 304	77-8	1JP-57A(1)		
33	Flower Pin Flat Head 2.5X20-SUS 304	77-9	1JP-56A(1)		
34	1CY-17A(1)	76	1JP-34A(1)		
35	GB/T 77-2007-M8X10	77	O -ring 19.5X1.2		
36	O -ring 6.5X1.5	78	1JP-44A(1)		
37	Parallel pins, unhardened steel or austenitic stainless steel, 02.5 h6 x 4	79	1JP-35A(1)		
38	1JP-39A(1)	82-1	1JP-36A(1)		
39	1JP-11A(1)	82-2	1JP-80A(1)		
40	DEF-2S-X-18-03-06	83-1	1JP-37A(1)		
41	GB/T 879.3-2000-2X8	83-2	1JP-73A(1)		
42	GB/T 896-1986-3	83-3	1JP-79A(1)		

Revised Dec 2026

SPECIFICATION



Caliber	.177 CAL
	.22 CAL
	.25 CAL
	.30 CAL
Weight	18 inch Barrel with Muzzle Break
	24 inch Barrel with Muzzle Break
	28 inch Barrel with Muzzle Break
Barrel Length	18 Inches
	24 Inches
	28 Inches
Overall Length	18 Inches Barrel Version 28.7 inches
	24 Inches Barrel Version 34.5 inches
	28 Inches Barrel Version 38.5 inches

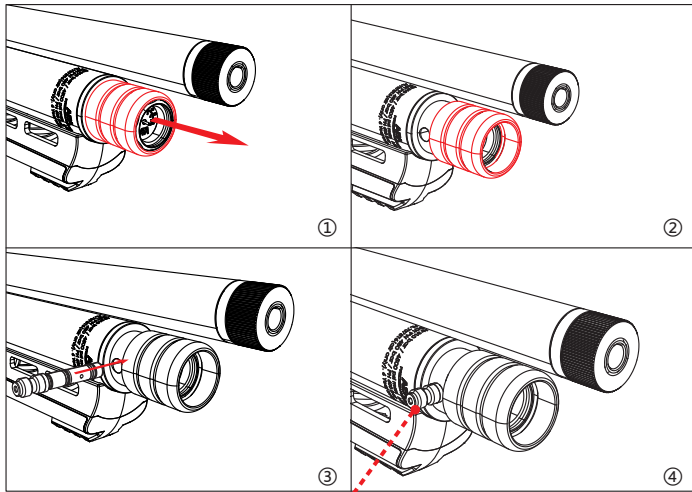
After Add Rear Tank System (Removable With Air Pressure) all weight add 1LBS	
Cocking System	Bolt Action (Side Lever)
Air Tube Capacity	18 Inches Front Airtube Volume 179 CC
	24 Inches Front Airtube Volume 261 CC
	28 Inches Front Airtube Volume 487 CC
Max Air Filling Pressure	4500 PSI /310 Bar
Muzzle Energy	18 Inch Barrel .177 Cal Up To FPE
	18 Inch Barrel .22 Cal Up To FPE
	18 Inch Barrel .25 Cal Up To FPE
	18 Inch Barrel .30 Cal Up To FPE
	24 Inch Barrel .177 Cal Up To FPE
	24 Inch Barrel .22 Cal Up To FPE
	24 Inch Barrel .25 Cal Up To FPE
	24 Inch Barrel .30 Cal Up To FPE
	28 Inch Barrel .177 Cal Up To FPE
	28 Inch Barrel .22 Cal Up To FPE
	28 Inch Barrel .25 Cal Up To FPE
28 Inch Barrel .30 Cal Up To FPE	
Optics	Picatinny Rail

Note: Actual performance may vary depending on ammunition type, temperature, and environmental conditions.

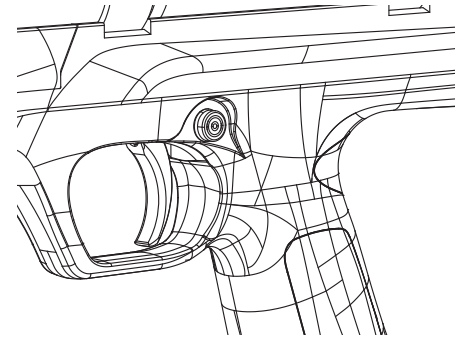
Air Filling Procedure

Ensure the rifle is unloaded and pointed in a safe direction.

Move the safety to the "SAFE" position



Fill port



Attach the quick-connector securely on the model' s fill port.

Close the bleed screw on your air source. Begin filling slowly to allow internal seals to equalize.

If air escapes from the barrel during initial filling: Cock the rifle once. This releases hammer pressure from the valve and allows the system to pressurize normally.

Monitor the filling gauge on your air source.

When complete, stop airflow, open the bleed valve fully, and disconnect the hose only after pressure is released.

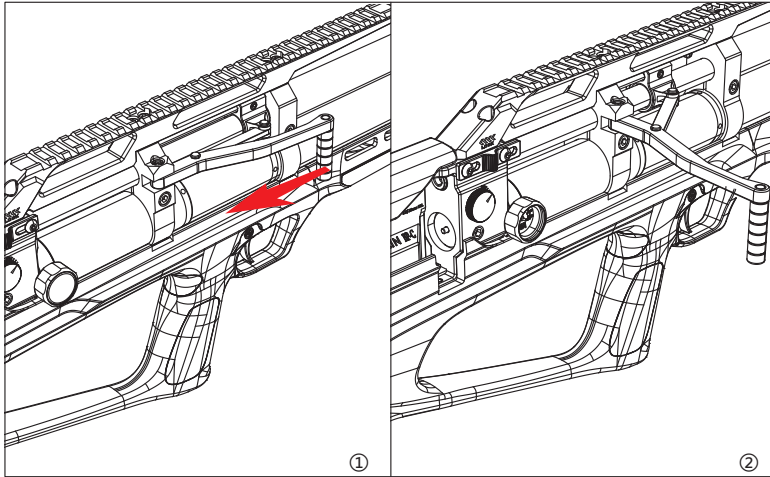
Hand Pump Notes

- Drain moisture traps regularly.
- Avoid rapid, continuous pumping to reduce heat and wear.
- Always use a pump designed for 4500 PSI PCP filling.

LOADING, COCKING & FIRING

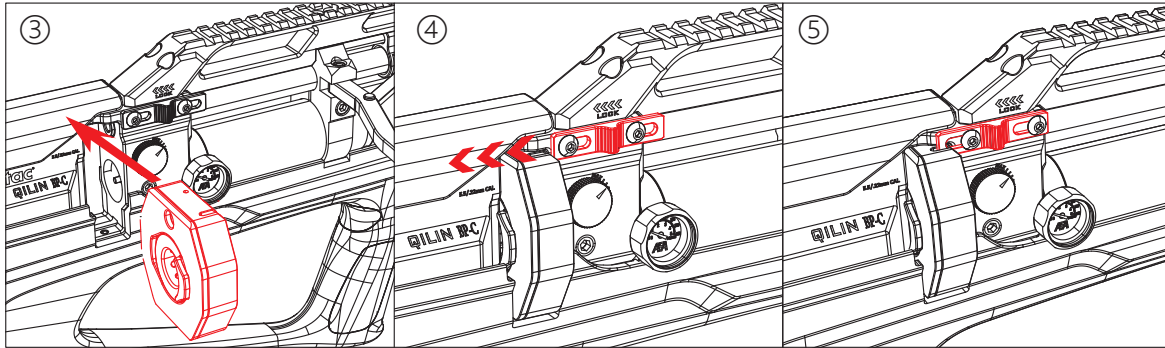
Safety Before Loading

- Ensure muzzle is pointed in a safe direction.
- Move the safety to the SAFE position.
- Never load the rifle with the safety off.



Pull the side-lever completely rearward until locked.

Ensure the lever remains fully locked before loading.



Loading the Slug

Push the bolt probe forward firmly to seat the slug fully into the chamber.

Close the side-lever completely and ensure it locks forward.

Partial or improper loading may cause jamming or damage.

Firing

- Point the rifle in a safe direction.
- Move the safety to FIRE only when prepared to shoot.
- Maintain proper trigger discipline at all times.

HAMMER DE-COCKING

To safely de-cock the rifle:

Pull and hold the side-lever fully to the rear.

While holding the lever, gently squeeze the trigger.

Allow the hammer spring to decompress under full control.

Return the side-lever to the forward position.

WARNING



Never release the lever unexpectedly during de-cocking.

After de-cocking, dry-fire into a safe direction to confirm the chamber is clear.

CLEANING & MAINTENANCE

Exterior Cleaning

- Wipe the exterior with a soft cloth.
- Apply a light coat of high-quality gun oil to protect metal surfaces.

Barrel Care

Use only airgun-appropriate tools:

- Cleaning pellets
- One-piece cleaning rod
- Non-metallic or airgun-safe brushes

Do NOT use:

- Water
- Firearm solvents
- Degreasers or chemical cleaners
- Steel brushes or jointed rods

Liquid solvents may damage seals, coatings, valve components, and O-rings.

Inspection

- Visually inspect the air tank and seals every 3 years or if damage is suspected.
- If leaks, cracks, abnormal sounds, or irregular function occur—stop using the rifle immediately.

STORAGE

Storage Guidelines

- Unloaded
- In a dry, cool, dark environment
- With pellets/slugs kept separately
- Out of reach of children

The rifle may be stored pressurized unless local regulations require otherwise.

Avoid Environmental Stress

- Do not expose the rifle to direct sunlight or prolonged heat.
- Avoid high humidity to prevent internal or external corrosion.
- Temperatures above normal may degrade seals.

Long-Term Storage

- Apply protective oil to exposed metal.
- Use a gun safe or case with humidity control.
- If stored longer than 6 months, visually inspect all components before use.

OPERATIONAL NOTICES

- Do not modify or remove any safety components.
- Do not attempt to access or adjust the factory-calibrated valve system.
- Only use dry, filtered compressed air.
- Never exceed the maximum fill pressure.
- Always follow local shooting laws and safe-handling practices.

Unauthorized disassembly, power tuning, or internal modification voids the warranty.

WARRANTY — ONE-YEAR LIMITED WARRANTY Coverage

Airguns are warranted to the original purchaser against defects in materials and workmanship for one (1) year from the date of purchase.

Proof of purchase is required.

Exclusions

Warranty does not cover:

- Normal wear items (O-rings, seals, magazines, external finish)
- Damage from misuse, abuse, neglect, or accidents
- Damage from unauthorized repair, modification, or disassembly
- Damage from overfilling or using non-air gases
- Cosmetic wear that does not affect function

Void Conditions

Warranty is void if the rifle has been:

- Modified or tuned
- Opened or repaired by unauthorized personnel
- Used with non-approved components, gases, or ammunition

How to Obtain Service

Contact your authorized dealer or seller.

Provide proof of purchase, serial number, photos, and a description of the issue.

Follow shipping or inspection instructions from the dealer or service center.

Do not ship the product without prior authorization.

Manufacturer' s Rights

Precision Airguns reserves the right to:

- **Modify or improve products without prior notice**
- **Change specifications or discontinue components**
- **Determine whether a repair or replacement is appropriate**

