

ACCESSORIES GUIDE



ROBROY
ENCLOSURESTM
Market-Leading Non-Metallic Enclosure Brands



Robroy Enclosure Accessories

Robroy Enclosures™ offers the largest selection of non-metallic enclosures in North America through its multiple brands. However, the ability to customize into unique end-user configurations may be the single most compelling reason to buy Robroy Enclosure products. **Robroy Enclosures Accessories** are offered for the enhancement of your enclosure: from our patented Pluggit!® to our new thermal and lighting accessories.

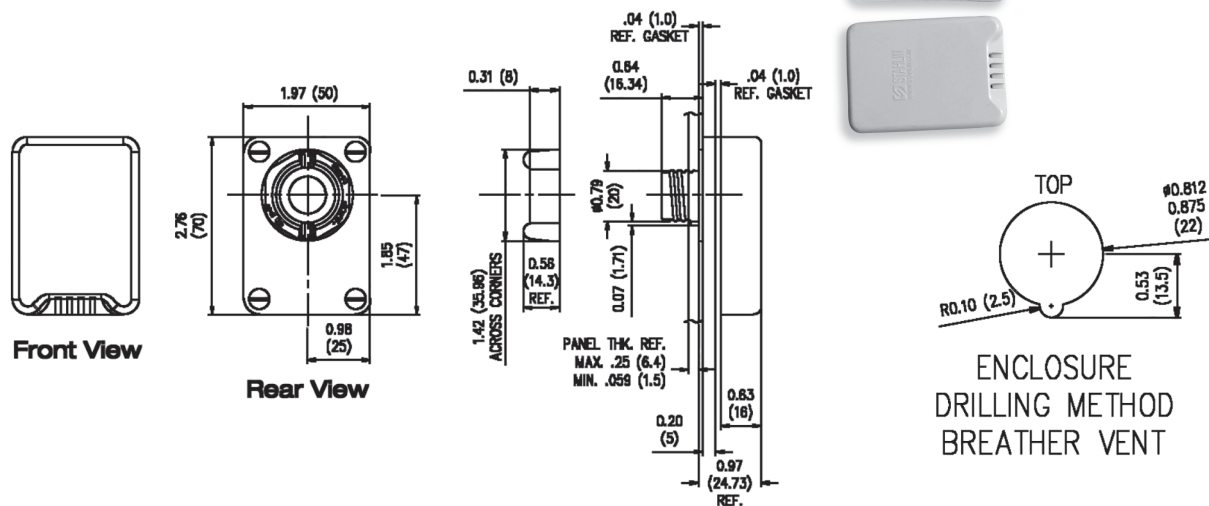
Engineered modifications may become complex and are end-user specific; but these accessories can be added at any time: from the immediate enclosure purchase to an addition later as a separately priced item.

Part numbers and their specifications are shown in this literature; it will make your usage simpler whether you choose to order **Robroy Enclosure Accessories** as add-ons, or on their own.

VENTS

Breather Vent – UL Recognized 4X

Robroy Enclosures' non-metallic Breather Vent allows an enclosure to "breathe" – allowing the free passage of air while maintaining UL Type 4X enclosure integrity as a recognized component.

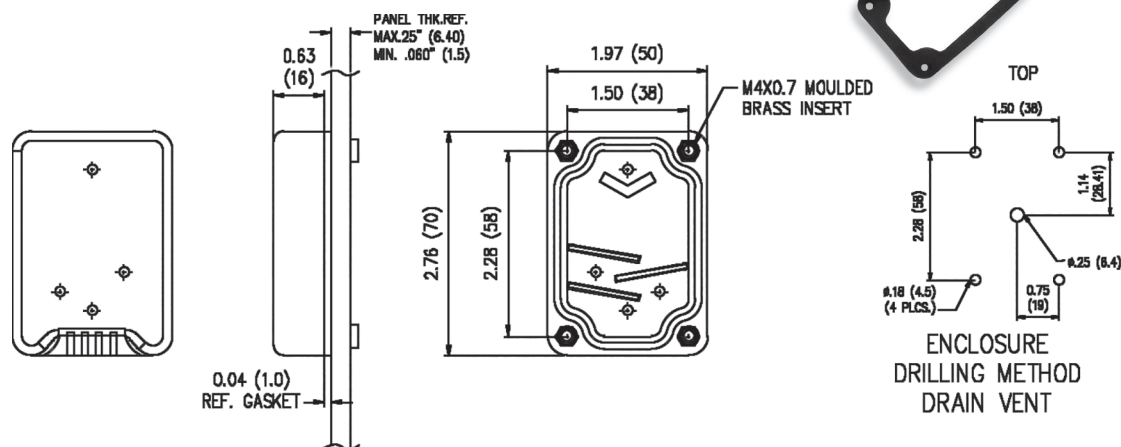


CATALOG NUMBER

REBV4XKIT

Drain Vent – UL Recognized 4X

Robroy Enclosures' non-metallic Drain Vent reliably protects electrical equipment housed inside an enclosure by properly draining unwanted moisture or accumulated water from within, while maintaining UL Type 4X enclosure integrity as a recognized component.

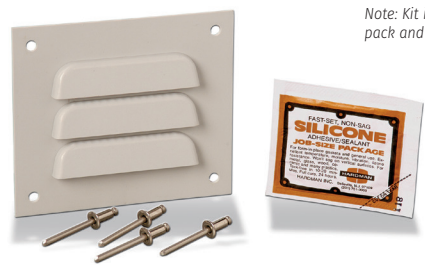
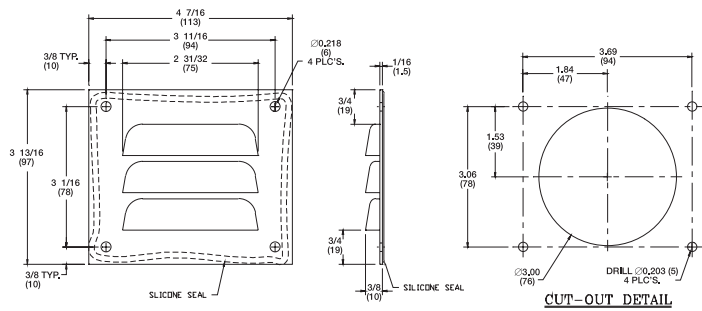


CATALOG NUMBER

REDV4XKIT

Louver Plate Vent

Robroy Enclosures' polypropylene Louver Plate Vent offers ventilation with a thin profile. Offered as a lone plate, or a full installation kit.



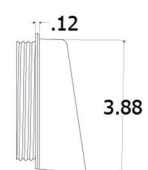
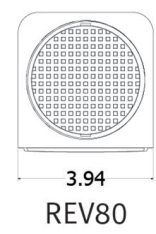
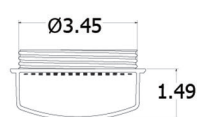
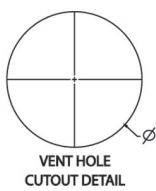
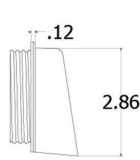
CATALOG NUMBER
REL P1
REL PK3KIT

Note: Kit includes REL P1 plus silicone pack and four rivets.

Vent

Robroy Enclosures' polycarbonate Vent offers ventilation installation with the turn of the wrist

CATALOG NUMBER	DESCRIPTION	CUT-OUT DIAMETER
REV60	Small Vent (60mm)	2.55 (64.77mm)
REV80	Large Vent (80mm)	3.43 (87.12mm)

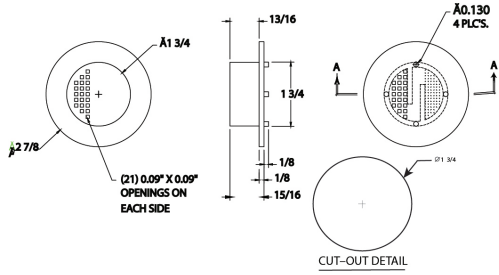


Drain & Vent

Robroy Enclosures' PVC Drain & Vent is a versatile vent, with easy installation. Available as an individual part, or kit.

CATALOG NUMBER
RED V1PVC
RED VK3KIT

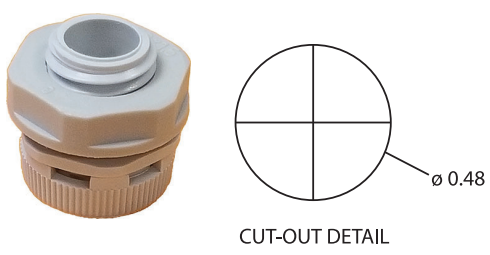
Note: Kit includes RED V1PVC and silicone pack



Condensation Plug

Robroy Enclosures' condensation plug is a 4X rated small footprint way of venting your enclosure.

CATALOG NUMBER
REAVP1/2



THERMAL ACCESSORIES

PERFORMANCE OVERVIEW TABLE OF THERMAL ACCESSORIES								
		230 V	120 V	400 V	460 V	24 V	12 V	48 V
Filter and Filter Fans	Max. Air Volume Flow	Rated Voltage						
REEF 4000 / REFF4000E	Outlet filters							CE, RoHS, cURus
REFFS4023A*	15 cfm	•	•					CE, RoHS, cURus
REFFS4210A*	50 cfm	•	•				•	CE, RoHS, cURus
REFFS4411A*	77 cfm	•	•					CE, RoHS, cURus
REFFS4620A*	159 cfm	•	•					CE, RoHS, cURus
REFFS4830A*	340cfm	•	•					CE, RoHS, cURus
REFFH4883A*	447 cfm	•	•	•	•			CE, RoHS, cURus
Enclosure Heaters	Heating Power							Approvals
REH501025	25 W	•	•					CE, RoHS, cURus
REH501050	50 W	•	•					CE, RoHS, cURus
REH501075	75 W	•	•					CE, RoHS, cURus
REH501100	100 W	•	•					CE, RoHS, cURus
REHT125A*	125 W	•	•					CE, RoHS, cURus
REH501150	150 W	•	•					CE, RoHS, cURus
REHT1200A*	200 W	•	•					CE, RoHS, cURus
REHT400A*	400 W	•	•					CE, RoHS, cURus
REHT800A*	800 W	•	•					CE, RoHS, cURus
Thermostats / Hygrostats	Description							
RETC3011* / RETF3011*	Variable temperature thermostat	•	•				•	CE, RoHS, cURus
RETT3012* / RETTF3012*	Variable twin thermostat	•	•				•	CE, RoHS, cURus
REMCH301410	Mechanical changeover hygrostat	•	•					CE, RoHS, cURus

* Denotes multiple part numbers in listed size

Filter fans are used if the desired cabinet temperature can be constantly above the ambient air temperature.

In combination with thermostats from Robroy Enclosures you can save on energy since the fan is only on when actually needed, on material because less consumption of filter mats and on time since less cleaning is required. All this will ensure a longer life time of the filter fans and will enhance your process reliability and safety.

Special features of our filter fans are:

- no tools required for installation
- installed on thicknesses ranging from 1/8" to 1/4"
- shielded and self-lubricating ball bearing fans
- permanent sealing gasket in polyurethane foam
- filter media can be cleaned, up to 10 times by washing, blowing dry and lightly beating

How to use filter fans correctly?

Preferably use the filter fan to blow the cool ambient air into enclosure (Fig.2.and Fig.3). This ensures that a slight positive pressure builds up inside the cabinet and that only filtered air flows inside it. The air blown into the cabinet displaces the warm air which exits through the exhaust filter. If air is drawn out of the cabinet by suction power (Fig.1) only filtered ambient air should enter the cabinet. Ensure that no unfiltered air can enter through poor seals or cable entries.

If you install a combination of filter fan/exhaust filter, the filter fan should always be placed in the lower third of the cabinet and the exhaust filter should be in the upper part of the cabinet to prevent heat pockets inside.

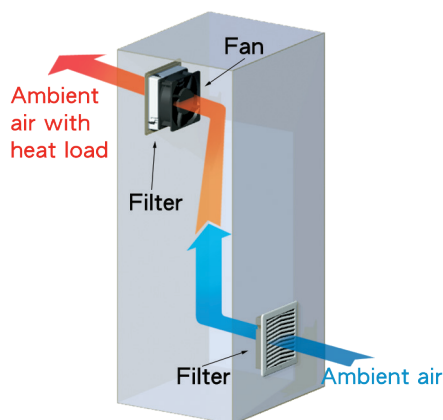


Fig.1 Exhaust System

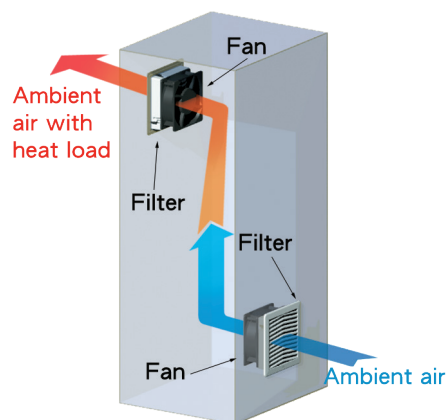


Fig.2 Pressure & Exhaust System

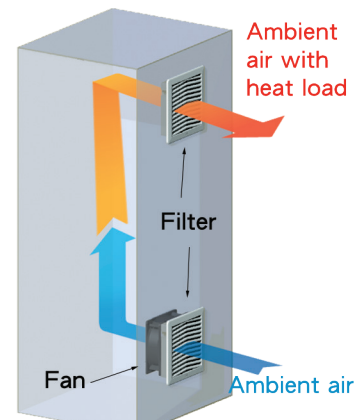


Fig.3 Pressure System

Rapid installation

Mounting without screws, just by simply pressing it onto the enclosure cutout.



Operational safety

Replacement of the filter from the outside, without tools.



Slide opening

Cover fixed to and released from base via sliding catches.

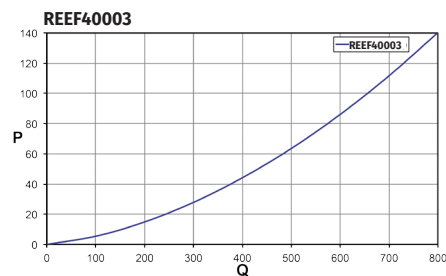
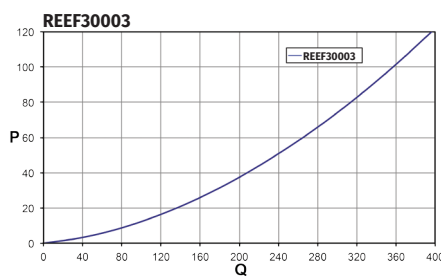
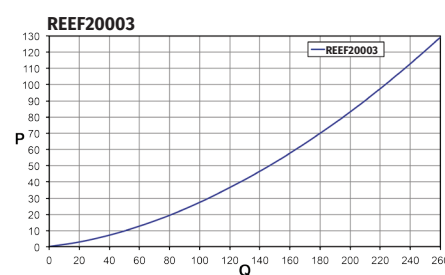
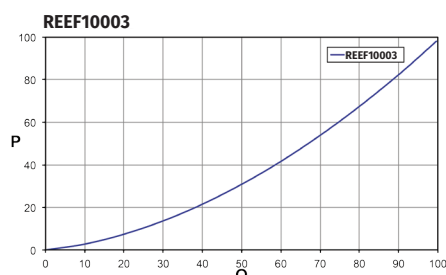
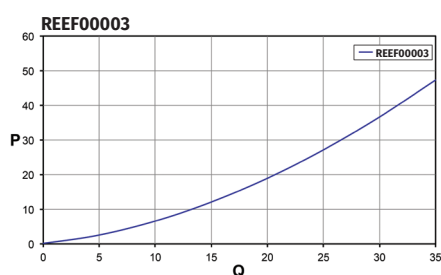
Exhaust Filter Series



* Gray color for pictorial,
actual color will be black

CE RoHS COMPLIANT C AL US
UL listed Type 12

ORDER NUMBER	FILTERING CLASS EN 779	OPERATING TEMPERATURE RANGE	DIMENSIONS (H X W X D) INCH	CUT OUT DIMENSIONS (INCH)	NEMA
REEF00003	G3	14°F - 131°F	4.2 x 4.2 x 0.9	3.6 x 3.6 (+0.02)	Type 12
REEF10003	G3	14°F - 131°F	5.9 x 5.9 x 1.2	4.9 x 4.9 (+0.06)	Type 12
REEF20003	G3	14°F - 131°F	8.0 x 8.0 x 1.16	7.0 x 7.0 (+0.06)	Type 12
REEF30003	G3	14°F - 131°F	9.8 x 9.8 x 1.3	8.8 x 8.8 (+0.06)	Type 12
REEF40003	G3	14°F - 131°F	12.8 x 12.8 x 1.3	11.5 x 11.5 (+0.06)	Type 12



Q = Air flow [m³/h]
P = Static pressure [Pa]

Filter Fan Series



* Gray color for pictorial,
actual color will be black



ORDER NUMBER	MAX. AIRFLOW (60 Hz)	VOLTAGE / FREQUENCY	TEMPERATURE RANGE	DIMENSIONS HXWXD (INCH)	CUT OUT DIMENSIONS (INCH)	NEMA	COLOR
REFFS4023A3	15 cfm	120 V ~ 60 Hz	14°F - 131°F	4.2 x 4.2 x 3.1	3.6 x 3.6 (+0.06)	Type 12	RAL 9005 (Black)
REFFS4023A4		230 V ~ 50/60 Hz					
REFFS4210A3	47 cfm	120 V ~ 60 Hz	14°F - 131°F	5.9 x 5.9 x 2.9	4.88 x 4.88 (+0.06)	Type 12	RAL 9005 (Black)
REFFS4210A4		230 V ~ 50/60 Hz					
REFFS4411A3	77 cfm	120 V ~ 60 Hz	14°F - 131°F	8.0 x 8.0 x 3.8	7.0 x 7.0 (+0.06)	Type 12	RAL 9005 (Black)
REFFS4411A4		230 V ~ 50/60 Hz					
REFFS4620A3	150 cfm	120V- 60 Hz	14°F - 131°F	9.8 x 9.8 x 4.9	8.8 x 8.8 (+0.06)	Type 12	RAL 9005 (Black)
REFFS4620A4		230 V ~ 50/60Hz					
REFFS4830A3	340 cfm	120 V ~ 60 Hz	14°F - 131°F	12.8 x 12.8 x 6.3	11.5 x 11.5 (+0.06)	Type 12	RAL 9005 (Black)
REFFS4830A4		230 V ~ 50/60 Hz					
REFFH4883A3	447 cfm	120 V ~ 60 Hz	14°F - 131°F	12.8 x 12.8 x 6.3	11.5 x 11.5 (+0.06)	Type 12	RAL 9005 (Black)
REFFH4883A4		230 V ~ 50/60 Hz					
REFFH4883A9		400/460 V ~ 50/60 Hz					

Spare Filter Mats



- Made of thermo-linked progressive structure synthetic fiber.
- Filter class G3, according to EN 779. Other filter classes like G4 available on request.
- UL 900 Class 2 approved and self-extinguishing in F1 class, according to DIN 53 438.
- Filter media can be cleaned, up to 10 times by washing, blowing dry and lightly beating.

PART NUMBER	EXHAUST FILTER / FILTER FAN
REFM00100	REEF00003 / REFFS40xx
REFM10100	REEF10003 / REFFS42xx
REFM20100	REEF20003 / REFFS44xx
REFM30100	REEF30003 / REFFS46xx
REFM40100	FEEF40003 / REFFx48xx

Enclosure heaters are an important segment of the Robroy Enclosures cabinet accessories program and form part of our thermal management solutions.

Temperature differences in enclosures, mostly in outdoor applications, often result in humidity and condensation which may cause function failures and corrosion. The use of the appropriate heating unit for your cabinet will eliminate these problems.

PTC fan heaters have a small and compact design, they heat up dynamically and are very quiet in operation. The internal warm air is equally distributed throughout the enclosure. PTC heaters have a wide voltage range and the heating power adjusts to the ambient temperature, resulting in better efficiency.

Resistor heaters have a much lower starting current compared to PTC heaters.



Fan Heater Series



Robroy Enclosures' cabinet heaters are a great way to combat the environment from the inside out. Temperature differences between the inside, and outside of your enclosure can result in humidity and condensation; such moisture can create failures and corrosion to the components within the enclosure.

- Built-in adjustable thermostat with indicator light
- Auto or fan on switch



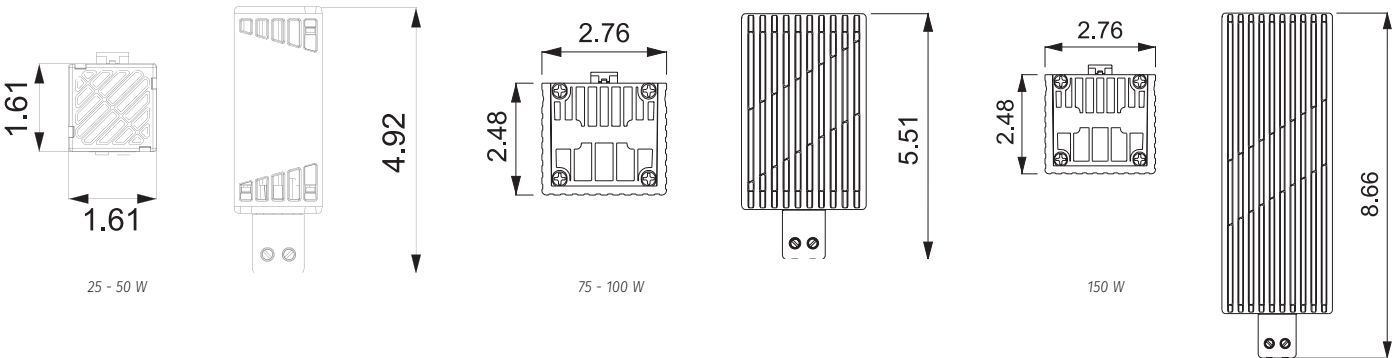
ORDER NUMBER	POWER OUTPUT @ 50°F	FAN AIR FLOW	VOLTAGE / FREQUENCY	OPERATING TEMP. RANGE	DIMENSIONS (H X W X D) INCH
REHT125A33	125 W	16 cfm	120 V - 50/60 Hz	-4°F - 104°F	5.39 x 4.09 x 4.61
REHT125A44	125 W	16 cfm	230 V - 50/60 Hz	-4°F - 104°F	5.39 x 4.09 x 4.61
REHT1200A33	200 W	16 cfm	120 V - 50/60 Hz	-4°F - 104°F	5.39 x 4.09 x 4.61
REHT1200A44	200 W	16 cfm	230 V - 50/60 Hz	-4°F - 104°F	5.39 x 4.09 x 4.61
REHT400A33	400 W	26 cfm	120 V - 50/60 Hz	-4°F - 104°F	7.48 x 4.09 x 4.61
REHT400A44	400 W	26 cfm	230 V - 50/60 Hz	-4°F - 104°F	7.48 x 4.09 x 4.61
REHT800A33	800 W	26 cfm	120 V - 50/60 Hz	-4°F - 104°F	7.48 x 4.09 x 4.61
REHT800A44	800 W	26 cfm	230 V - 50/60 Hz	-4°F - 104°F	7.48 x 4.09 x 4.61

PTC heater series

This PTC heater is compact, highly efficient, and safe to touch.
2 screw terminal block for stranded or rigid wire 2.5mm



ORDER NUMBER	CONNECTION	POWER OUTPUT @ 68°F	VOLTAGE / FREQUENCY	OPERATING TEMP. RANGE	DIMENSIONS (H X W X D) INCH
REH501025	2 screw terminal block for standard or rigid wire AWG 14	25 W	100 - 240 V AC / DC 50/60 Hz	-49°F - 158°F	4.92 x 1.61 x 1.61
REH501050	2 screw terminal block for standard or rigid wire AWG 14	50 W	100 - 240 V AC / DC 50/60 Hz	-49°F - 158°F	4.92 x 1.61 x 1.61
REH501075	2 screw terminal block for standard or rigid wire AWG 14	75 W	100 - 240 V AC / DC 50/60 Hz	-49°F - 158°F	5.51 x 2.76 x 2.48
REH501100	2 screw terminal block for standard or rigid wire AWG 14	100 W	100 - 240 V AC / DC 50/60 Hz	-49°F - 158°F	5.51 x 2.76 x 2.48
REH501150	2 screw terminal block for standard or rigid wire AWG 14	150 W	100 - 240 V AC / DC 50/60 Hz	-49°F - 158°F	8.86 x 2.76 x 2.48



Variable Temp Thermostat



Adjustable Thermostat for temperature regulation. Available for both heating and cooling, and in Celsius and Fahrenheit.



 Thermal Controls

ORDER NUMBER	DESCRIPTION	SETTING RANGE	MAX. SWITCHING CAPACITY	TEMPERATURE RANGE / HUMIDITY	DIMENSIONS (H X W X D) INCH
RETC301110	Adjustable thermostat, NC	-10°C - 80°C	250 V AC / 16 A (p.f. 0.95), 10 A (p.f. 0.75) - 50/60 Hz, 72 V DC / max. 30 W	-49°F - 248°F, 98% (-45°C - +120°C)	2.36 x 1.54 x 1.53
RETF301111		14°F - 176°F			
RETC301120	Adjustable thermostat, NO	-10°C - 80°C			2.36 x 2.85 x 1.67
RETF301121		14°F - 176°F			
RETTTC301230	Adjustable twin thermostat, NCNO	-10°C - 80°C			2.36 x 2.85 x 1.67
RETTTF301231		14°F - 176°F			
REMCH301410	Mechanical changeover hygostat	40 - 90%	230 V AC 2 A hum / 5 A dehum	0°C - 60°C (32°F - 140°F), 95%	2.36 x 1.54 x 1.67

Mechanical Changeover Hygostat



Adjustable Hygostat
for humidity regulation

CATALOG NUMBER	DIMENSIONS (INCHES)	PERFORMANCE
REMCH301410	2.36 x 1.54 x 1.67	max 230V AC, 2A hum, 5A dehum

ENCLOSURE LIGHTING

LED Enclosure Light



CATALOG NUMBER	DESCRIPTION	
REML400000	Motion sensor, Wieland	
RESL400100	ON/OFF switch, Wieland	
PERFORMANCE DATA		
Power consumption	4 Watt	
Light output (Luminosity)	400 Lm	
Light color / temperature	Cool white / 6,500K	
Lamp type	LED, 120° angle	
Life time (@ 68°F)	40,000 hrs.	
Operating temp. range	-22° F - 158° F	
Switch off time (motion sensor)	5 min.	
DIMENSIONS		
Dimensions (L x W x H)	14.07 x 1.26 x 1.40 (1.23) inch	
Material housing	PC clear (Top), PC ABS blue (Base)	
Weight	0.30 lbs.	
ELECTRICAL DATA		
Voltage / Frequency	24 - 265 V AC / DC 50/60 Hz	12 V DC
Protection class	II (double insulated)	
IP protection to IEC 60 529	IP 20	
Mounting	Magnetic strips, clips	
Certification	CE, cURus	

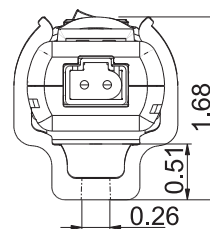
'Lights off, LED on'

The new LED light fixture is the economical and space saving solution for cabinet and enclosure lighting. The state of the art LED technology ensures a long and maintenance free life cycle.

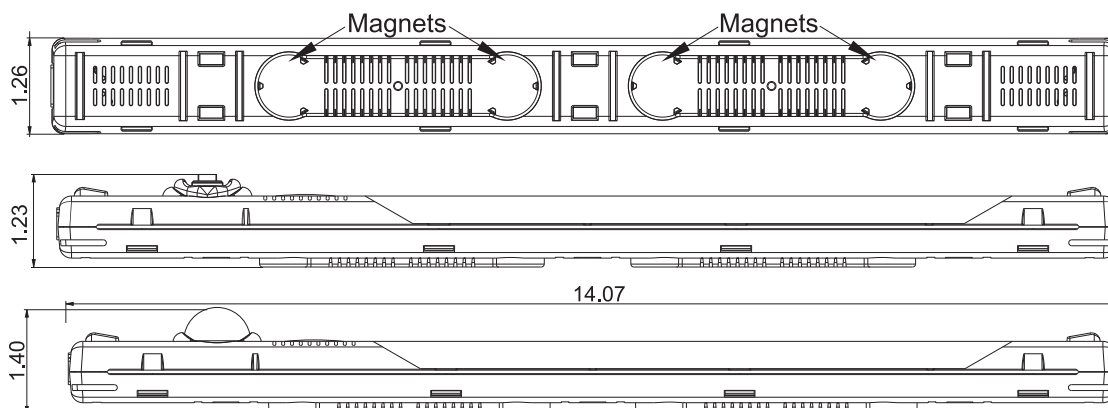
The main features are:

- Combined AC & DC voltage range allows the universal use with a single model
- Motion sensor or ON/OFF switch available
- Various fitting options for more flexibility
- Daisy chain cables allow to connect up to 16 lights with AC and up to 8 lights with DC voltage
- Wieland or push fit connector for fast and easy installation

Mounting Accessories



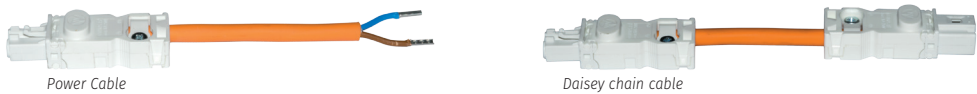
Screw mount clip M6



Connectors & Cables



CATALOG NUMBER	DESCRIPTION	MOUNTING	APPROVALS
REWCF400702	Wieland female connector for cables Ø 0.2 - 0.3 inch, AWG 18-22	Screw connection	CE, cURus
REWCM400703	Wieland male connector for cables Ø 0.2 - 0.3 inch, AWG 18-22	Screw connection	CE, cURus



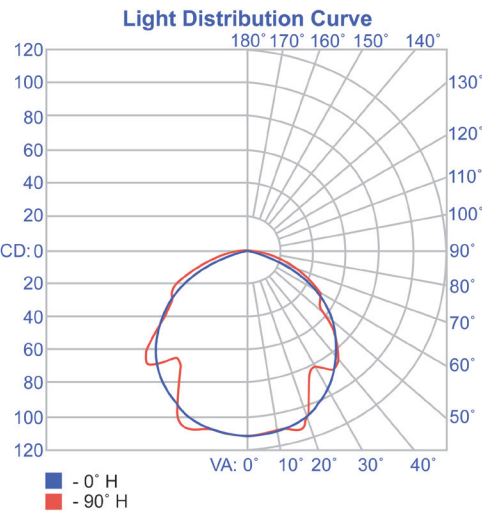
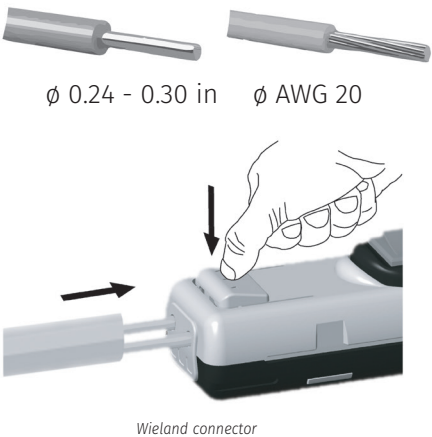
CATALOG NUMBER	DESCRIPTION	COLOR	MOUNTING	APPROVALS
RELC400711	Power cable 2 x AWG18, halogen free with Wieland female connector 118 inch	white	Plug connection	CE, cURus*
REDC400721	Daisy chain cable 2 x AWG18, halogen free, with Wieland male / female 20 inch	white	Plug connection	CE, cURus*

*applies only to individual components, connector and cable

Door End Limit Switch



CATALOG NUMBER	DESCRIPTION	COLOR	MOUNTING	APPROVALS
REDSP310000	Door end limit switch, 2 x M4 screws, mounting bracket, 2.87 x 1.19 x 1.18 inch	black	screw terminals	CE, cURus



ENTRY ACCESSORIES

Nylon Cord Grip Fittings

Robroy Enclosures' Nylon cord grips are durable and easy to install. The body and sealing nut are manufactured with a tough, impact resistant nylon. Together the nut and washer form a positive sealing grip when installed through an enclosure wall. The oil resistant neoprene grommet and nylon washer fit tightly around an entrance cord, sealing out moisture, dust and foreign materials.

NEMA STD FBI-1983

UL STD 514 File No. E53599 Type 4

CSA STD 22.2 No. 18 File No. 28985 Type 4

HAZ LOC NEC 501-4(b), 502-4(a)(2), 503-3(a)

Class I, Div 2, Class II Div 1 and 2; Class III Div 1 and 2



CATALOG NUMBER	HUB DIAMETER	CABLE DIAMETER RANGE	INSIDE BODY DIAMETER
RE5122	1/2"	.250-.312	.625
RE5123	1/2"	.312-.375	.625
RE5124	1/2"	.375-.438	.625
RE5125	1/2"	.438-.500	.625
RE5126*	1/2"	.500-.562	.625
RE5146	3/4"	.562-.625	.788

*Cable jacket may have to be stripped for clearance.

NOMINAL O.D.				
SIZE	TYPE	2 COND	3 COND	4 COND
18	SV-SVT	.24	.25	.26
	SJ-SJO	.31	.34	.36
	S-SO	.39	.41	.44
	SJTO	.30	.33	.36
	STO	.38	.39	.42
16	SJ-SJO	.33	.36	.39
	S-SO	.41	.43	.49
	SJTO	.32	.35	.39
	STO	.39	.42	.47
14	SJO	.43	.47	.61
	S-SO	.53	.56	.59
	STO	.52	.55	.40
	BDC			
12	S-SO	.61	.64	.67
	STO	.59	.63	.67
	BDC			.45
10	S-SO	.64	.69	.75
	STO	.64	.68	.74
	BDC			.50
8	S-SO	.79	.90	.97
	STO	.81	.85	.96
	BDC			.68
6	S-SO	.91	.99	1.07
	STO	.95	1.00	
	BDC			.80
4	S-SO	1.09	1.15	1.29
	STO	1.10	1.15	1.30
	BDC			.94
2	STO	1.29	1.34	1.08
	BDC			

Dimensional data is taken from various cable manufacturers. It is not guaranteed but usable for general purposes.

Cable Glands

Robroy Enclosures' Nylon Cable Glands are used to seal around cables to keep out liquids, and debris.

CATALOG NUMBER	DESCRIPTION
RENPT 3/8	3/8" Nylon NPT cable gland
RENPT 1/2	1/2" Nylon NPT cable gland
RENPT 3/4	3/4" Nylon NPT cable gland
RENPT 1	1" Nylon NPT cable gland

PVC Coated Hubs for use with PVC Coated Rigid Conduit

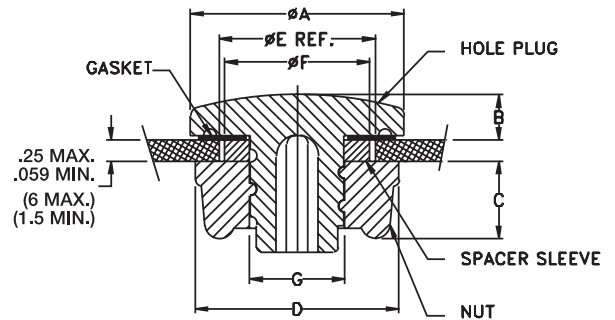


For connections using rigid PVC coated conduit, Plasti-Bond Red hubs are available in four standard sizes.

CATALOG NUMBER	SIZE
RESTPRSTG2	3/4"
RESTPRSTG3	1"
RESTPRSTG4	1 1/4"
RESTPRSTG5	1 1/2"

Pluggit!®

- Superior corrosion resistance compared to rust-prone carbon steel and other metallic alternatives helps ensure increased enclosure life expectancy.
- Cost effective when compared to either carbon or stainless steel alternatives.
- Considerably better long-term resistance to UV degradation versus UV-susceptible soft rubber plugs that turn brittle from extreme temperature variations and repeated UV exposure.
- Will not create galvanic corrosion associated with dissimilar metals sometimes used in electrical enclosures.
- Maintains all chemical resistance features of current Robroy Enclosures products.
- Flame retardant material to UL 94V-0.
- A submersion/hosedown rated component for use in electrical enclosures UL recognized to type 4X and 6P.
- IEC tested to IP66 and IP68.
- Temperature Rating: -26° F to +257° F (-32° C to +125° C)
- Patented design since 2017



PLUGGIT!®

KIT NUMBER	ØA	B +0.05" -0.00"	C	D ACROSS FLATS	ØG	CONFIG.	ØE REF. - NOM. HOLE DIA. RANGE	ØF	COMMON INDUSTRY APPLICATIONS
REHP SERIES1	1.00" (25.40)	0.22" (5.59)	0.35" (8.89)	0.88" (22.35)	0.44" (11.18)	CONFIG 1	0.50" - 0.56" (12.70 - 14.29)	N/A	1/2" Dia. Hole
						CONFIG 2	0.63" - 0.69" (16.00 - 17.46)	0.56" (14.22)	5/8" Dia. Hole
						CONFIG 3	0.75" - 0.81" (19.05 - 20.64)	0.68" (17.27)	3/4" Dia. Hole
REHP SERIES1.5	1.20" (30.48)	0.22" (5.59)	0.33" (8.38)	1.04" (26.39)	0.81" (20.57)	CONFIG 3.5	0.88" (22.35)	N/A	1/2" Conduit
REHP SERIES2	1.50" (38.10)	0.22" (5.59)	0.38" (9.63)	1.38" (35.05)	0.85" (21.59)	CONFIG 4	0.88" - 1.00" (22.35 - 25.40)	N/A	1/2" Conduit 22mm PB
						CONFIG 5	1.06" - 1.12" (26.92 - 28.45)	1.03" (26.16)	3/4" Conduit
						CONFIG 6	1.22" - 1.28" (30.73 - 32.51)	1.19" (30.22)	30mm PB
REHP SERIES3	2.00" (50.80)	0.22" (5.59)	0.38" (9.63)	1.88" (47.75)	1.35" (34.29)	CONFIG 7	1.38" - 1.50" (35.05 - 38.10)	N/A	1" Conduit
						CONFIG 8	1.69" - 1.75" (42.67 - 44.45)	1.65" (41.91)	1-1/4" Conduit
REHP SERIES4	2.75" (69.85)	0.22" (5.59)	0.41" (10.41)	2.63" (66.67)	1.97" (50.04)	CONFIG 9	2.00" - 2.12" (50.80 - 53.85)	N/A	1-1/2" Conduit
						CONFIG 10	2.50" - 2.56" (63.50 - 65.09)	2.44" (61.89)	2" Conduit
REHP SERIES5	3.38" (85.85)	0.22" (5.59)	0.34" (8.63)	3.38" (85.85)	2.97" (75.44)	CONFIG 11	3.00" (76.20)	N/A	2-1/2" Conduit
REHP SERIES6	4.00" (101.60)	0.22" (5.59)	0.34" (8.63)	4.00" (101.60)	3.59" (91.19)	CONFIG 12	3.62" (91.95)	N/A	3" Conduit
REHP SERIES7	4.50" (114.30)	0.22" (5.59)	0.38" (9.63)	4.50" (114.30)	4.09" (103.88)	CONFIG 13	4.12" (104.65)	N/A	3-1/2" Conduit
REHP SERIES8	5.00" (127.00)	0.22" (5.59)	0.41" (10.41)	5.00" (127.00)	4.59" (116.58)	CONFIG 14	4.62" (117.35)	N/A	4" Conduit

ADDITIONAL ACCESSORIES

Trilobular Screws

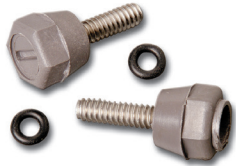


This 10-32 x 1/2 pan phillips head stainless steel screw is self threading for the mounting bosses in thermoplastic enclosures. Sold in a 2 count pack.

CATALOG NUMBER

RE2PKTBS

Encapsulated Screws



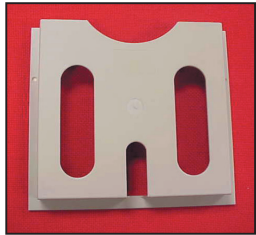
For corrosive environments this pvc coated stainless steel screw head thread #10-24 screw pack is for you. Available in a 2 or 4 count pack with O-rings included to make screw captive.

CATALOG NUMBER

RE2PKENCAP

RE4PKENCAP

Plastic Print Pocket



Robroy Enclosures' offers a polystyrene print pocket with self-adhesive tape that can be utilized to store prints, or other important documents within the enclosure.

CATALOG NUMBER

REPRTPKT

HEIGHT

9.3"

WIDTH

10.4"

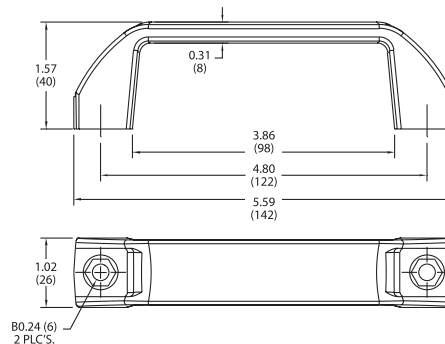
DEPTH

1.2"

Carrying Handle



Robroy Enclosures' nylon carrying handle is the perfect solution to make your system portable.



CATALOG NUMBER

RECH109506

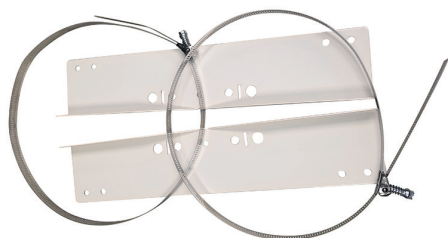
HOLE DIAMETER

.25"

SCREW SIZE

1/4-20

Pole Mount



Robroy Enclosures' pole mount kit fits the enclosure dimension that will be mounted perpendicular to pole.

Comes with light gray powder coated carbon steel top and bottom flanges, stainless steel straps, and mounting screws.

CATALOG NUMBER

PM6-8

PM10-12

PM14-16

PM18-24

Vapor Capsule



Robroy Enclosures' vapor capsules contain a unique vapor phase inhibitor designed to protect metallic surfaces within an enclosure against airborne corrosion.

CATALOG NUMBER

REVC21

Note: Radius of Protection: 2 ft.
Normal Life Span: 1 yr.





500 Maple Street
Belding, MI 48809
P: 616-794-0700
F: 616-794-3378

RobroyEnclosures.com