

Fixed Mount Brackets

Data Sheet

Product Description

Parsec's heavy duty, steel fixed mounting brackets are rugged, weatherproof and designed for mounting any antennas within the Parsec family of bolt mount antennas. Brackets are wind rated up to 130 mph; A durable antenna needs an equally durable mount!

Features

- **130 mph Wind Rating**
- Sleek Construction
- Multiple Mounting Options
- Wall or Pole Mount Function
- Designed for All Environments
- Weather and Vandal Proof

Table of Contents

Page 2: Rounded Plate Pole Mount Brackets

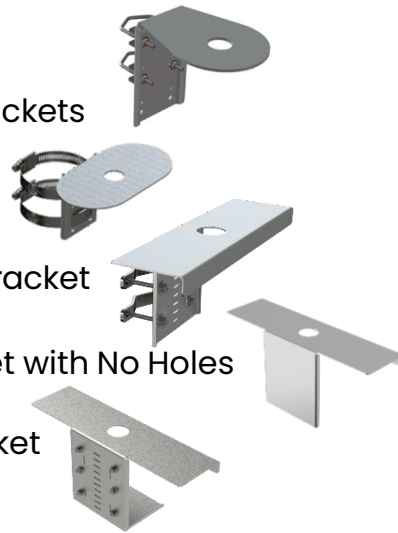
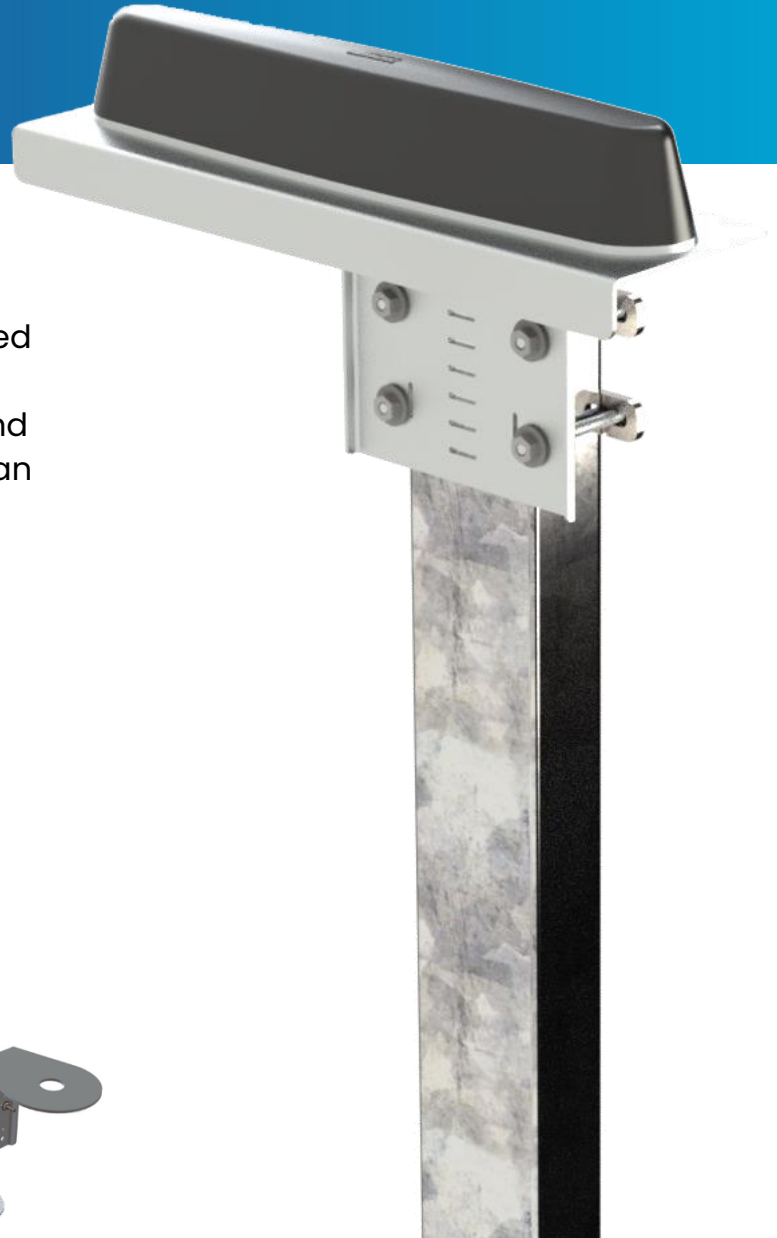
Page 3: Mini Plate Pole Mount Bracket

Page 4: Rectangle Plate Pole Mount Bracket

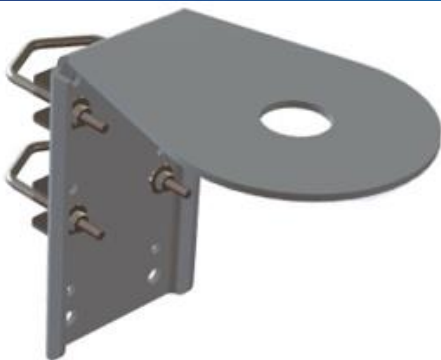
Page 5: Rectangle Plate Mount Bracket with No Holes

Page 6: Rectangle Plate L Mount Bracket

Page 8: Complete Chart



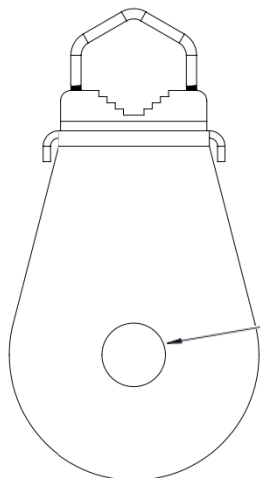
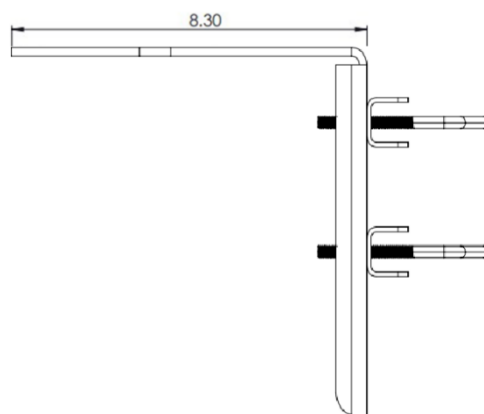
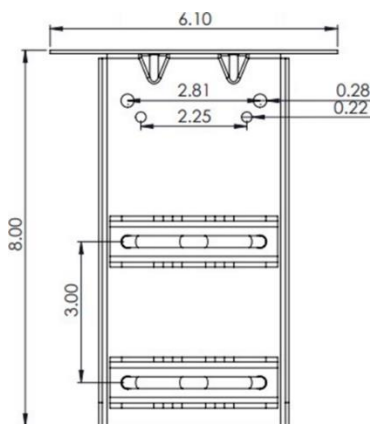
ROUNDED PLATE POLE MOUNT BRACKETS



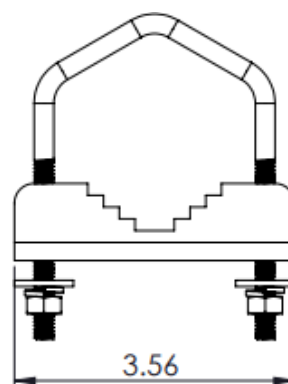
This bracket with a rounded plate is designed for antennas needing a 1 or 1.5-inch mounting hole.

Bracket is designed to securely fit poles with 1.5 to 2.5-inch diameters.

Part #	Description	Plate Size	Compatible Antennas
PTA0149	Round plate with 1" hole and pole mount bracket	6.10" D	Chihuahua S & ST, Collie
PTA0149-F	Round plate with 1" hole and pole mount Bracket, Horizontal Truss Mounting	6.10" D	Chihuahua S & ST, Collie
PTA0149-MG-W	Round plate with 1" hole and pole mount Bracket, Marine Grade, White	6.10" D	Collie
PTA0149H	Round plate with 1.5" hole and pole mount bracket	6.10" D	Great Pyrenees, Husky
PTA0149H-F	Round plate with 1.5" hole and pole mount bracket, Horizontal Truss Mounting	6.10" D	Great Pyrenees, Husky
PTA0149H-MG-B	Round plate with 1.5" hole and pole mount bracket, Marine Grade, Black	6.10" D	Great Pyrenees, Husky
PTA0149H-MG-W	Round plate with 1.5" hole and pole mount bracket, Marine Grade, White	6.10" D	Great Pyrenees, Husky
PTA0149H- -W	Round plate with 1.5" hole and Wall Mount Kit	6.10" D	Great Pyrenees, Husky



Mounting Hole Diameter
PTA0149H - DIA 1.5"
PTA0149 - DIA 1.0"

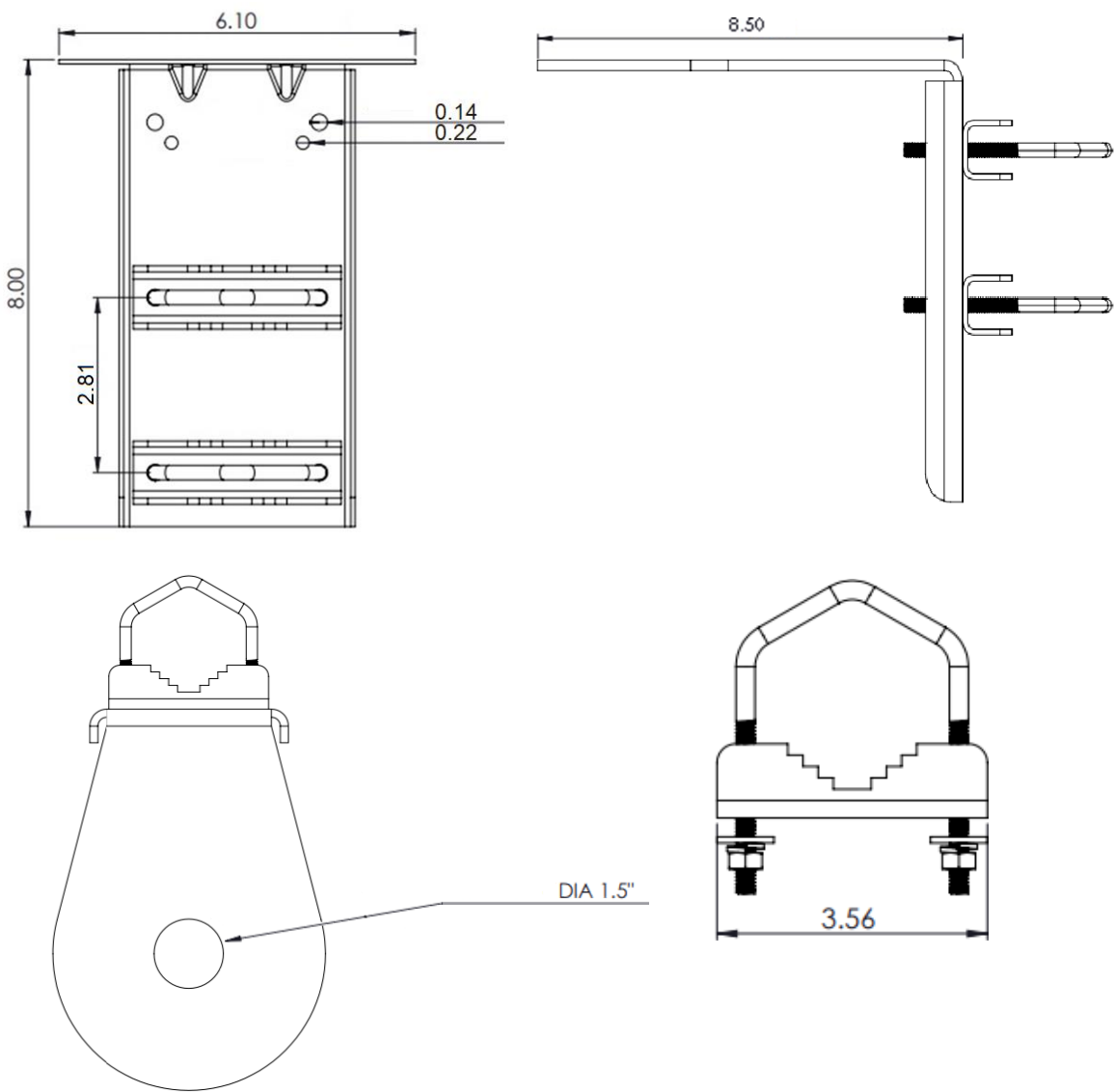


ROBUST POLE MOUNT BRACKET

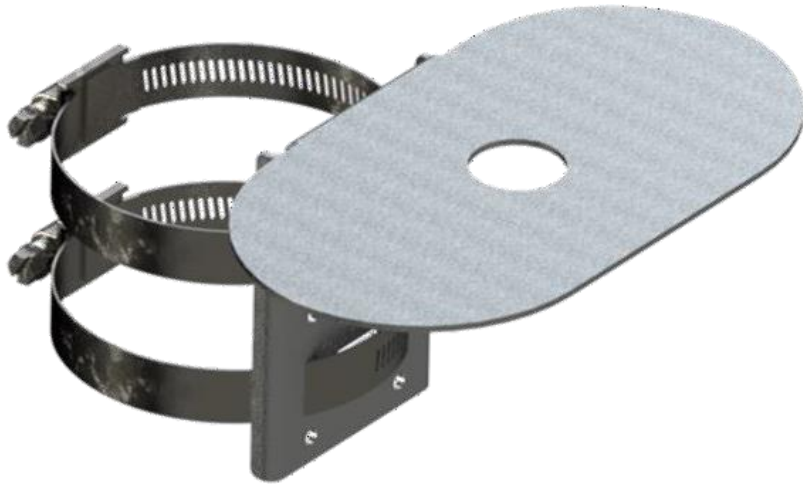


This bracket is designed for antennas needing a heavy-duty mount. This bracket has had stiffeners removed, removing stress concentration points and is twice the thickness of the PTA0149 mount. This Bracket is designed for antennas needing a 1.5-inch mounting hole to securely fit poles with 1.5 to 2.5-inch diameters.

Part #	Description	Plate Size	Compatible Antennas
PTA0721	Pole Mount Bracket, Heavy Duty, High Vibration	6.10" D	Great Pyrenees, Husky



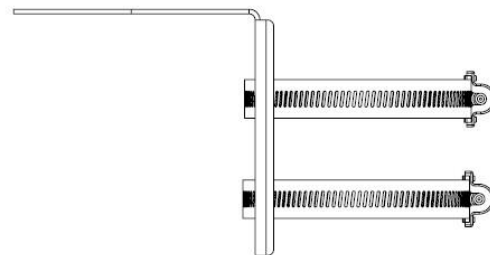
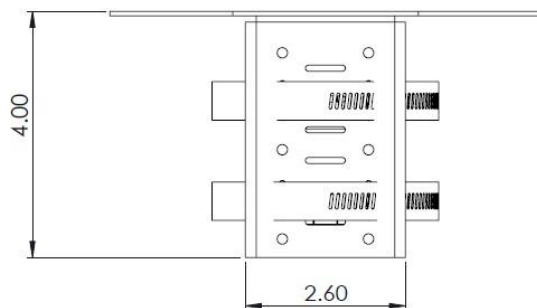
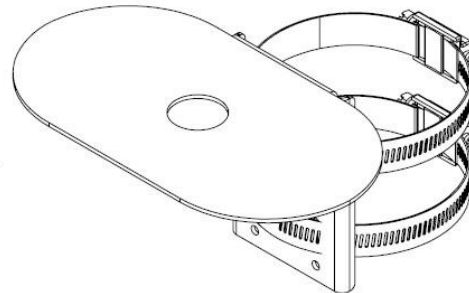
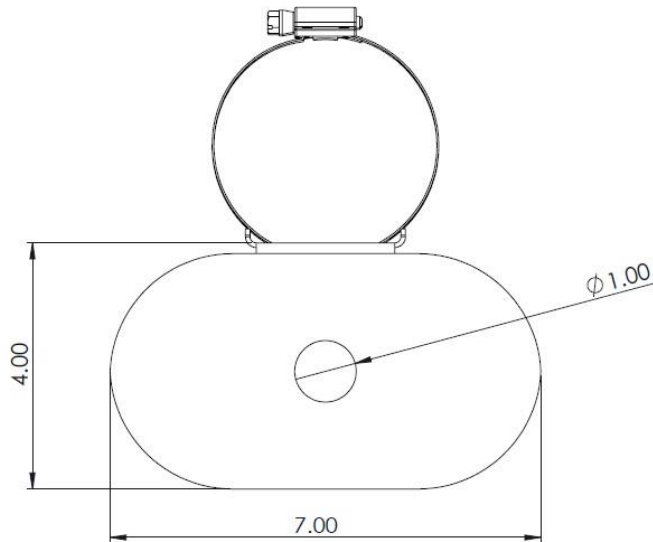
MINI PLATE POLE MOUNT BRACKET



This bracket is designed for smaller antennas needing a 1-inch mounting hole. The included adjustable gear/worm-drive clamps fit poles or rectangular posts with 2.5 to 3.5-inch widths.

Slots for gear clamps run vertically and horizontally.

Part #	Description	Plate Size	Compatible Antennas
PTA0637	Mini plate with 1" hole and pole mounting bracket	7"L x 4"W	Border Collie, Chihuahua S & ST, Doberman, Rottweiler

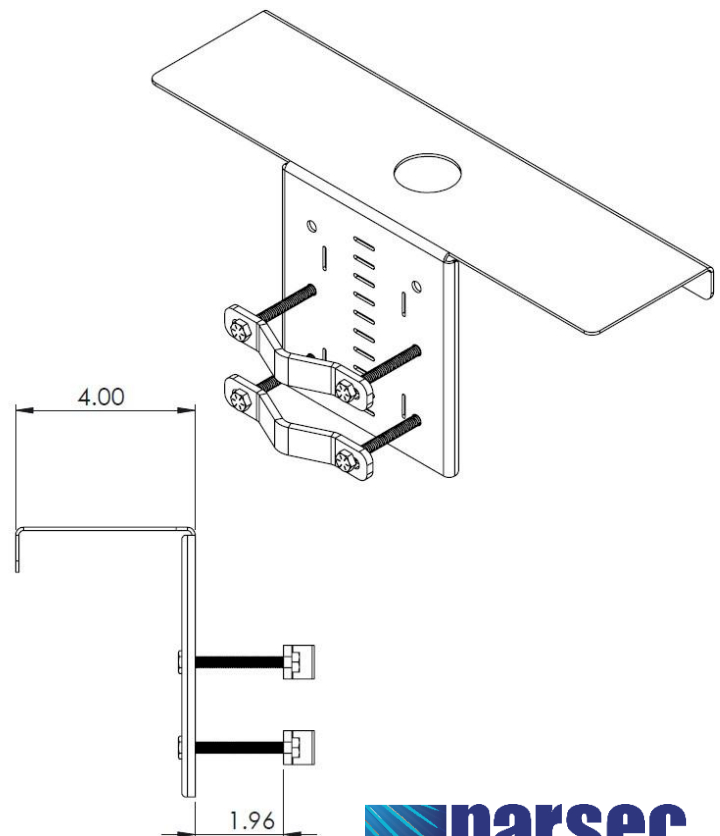
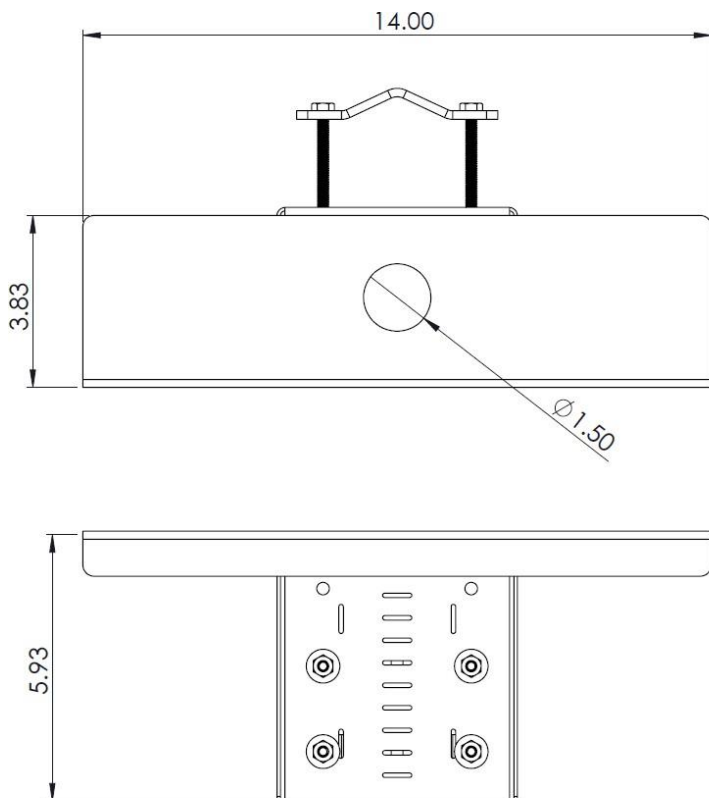


RECTANGLE PLATE POLE MOUNT BRACKET

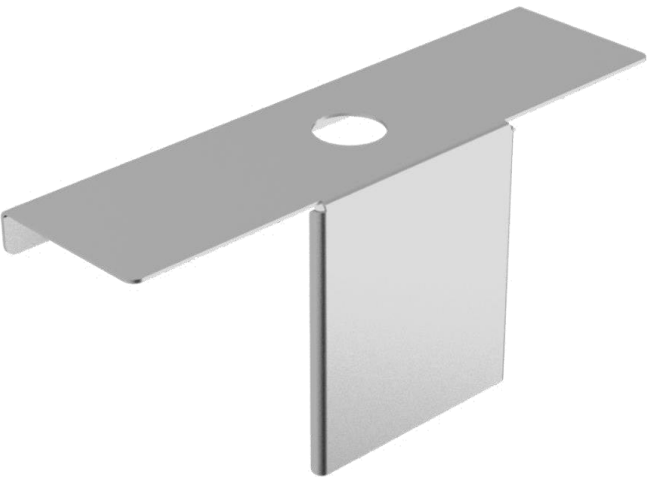


This bracket with a 14-inch-long plate is designed for longer antennas needing a 1.5-inch mounting hole. Bracket is designed to securely fit poles with 1 to 2.18-inch diameters or rectangular posts up to 3 inches wide. Additional slots for gear/worm-drive clamps run vertically and horizontally.

Part #	Description	Plate Size	Compatible Antennas
PTA0638	Rectangle plate with 1.5" hole, pole mount Bracket, and Wall Mount Anchors & Screws	14"L x 3.75"W	Australian Shepherd, Belgian Shepherd, Irish Setter, K9

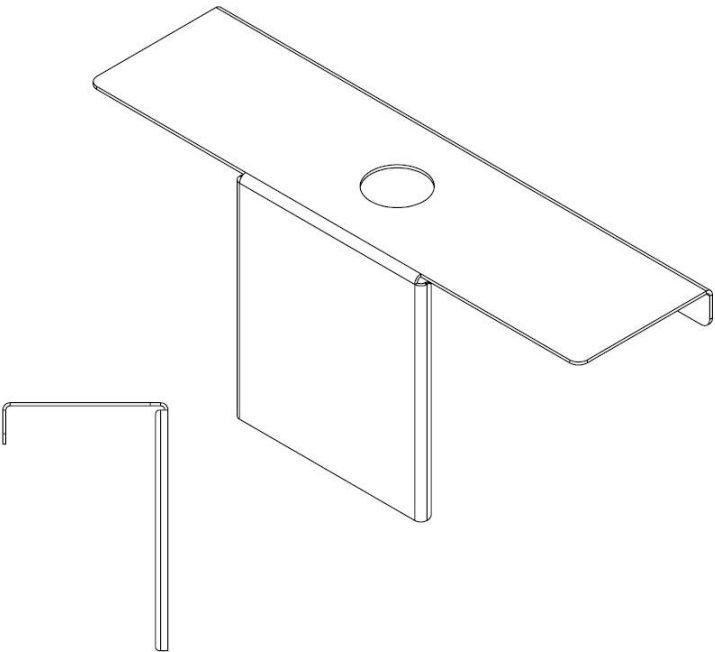
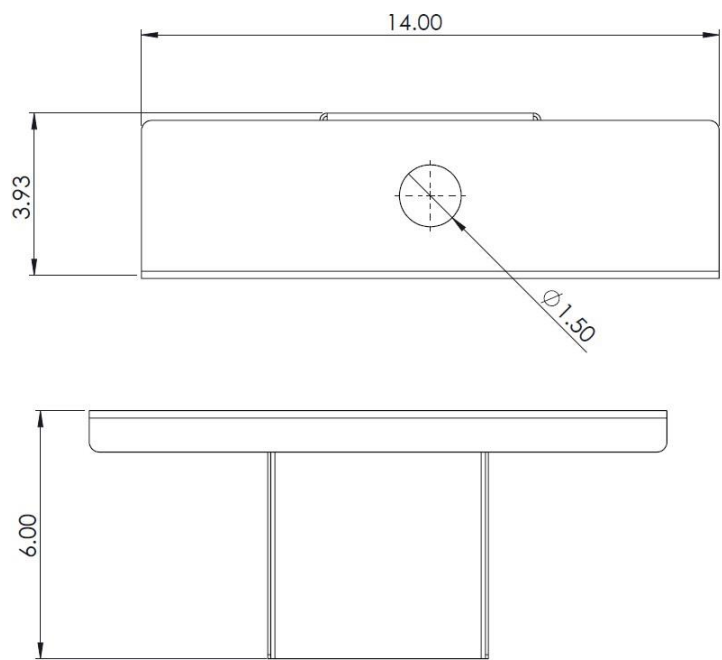


RECTANGLE PLATE MOUNT BRACKET w/ NO HOLES

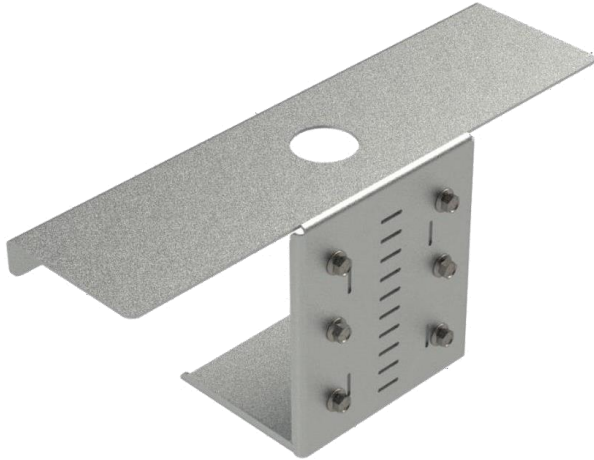


This bracket with a 14-inch-long plate is designed for longer antennas needing a 1.5-inch mounting hole. Bracket is solid and designed for user to drill holes for customizable mounting.

Part #	Description	Plate Size	Compatible Antennas
PTA0640	Rectangle plate with 1.5" hole and bracket with no predrilled screw holes	14"L x 3.75"W	Australian Shepherd, Belgian Shepherd, Irish Setter, K9

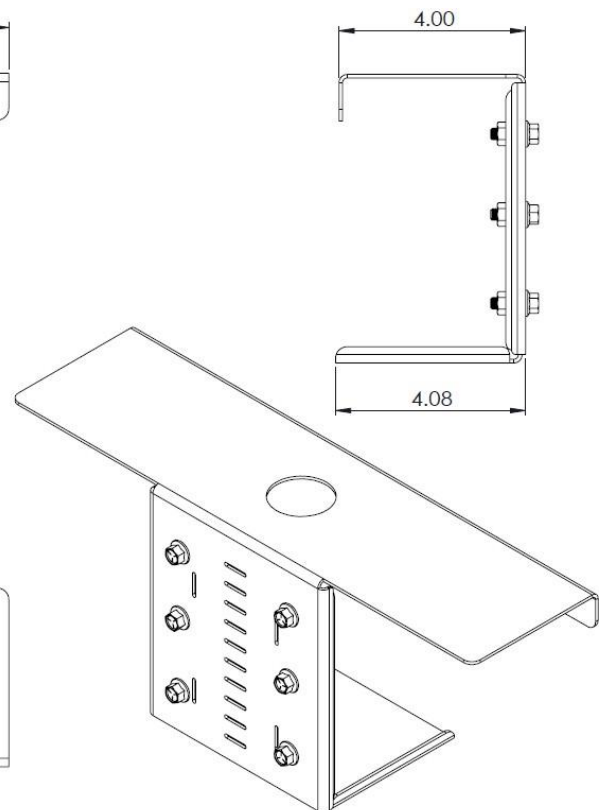
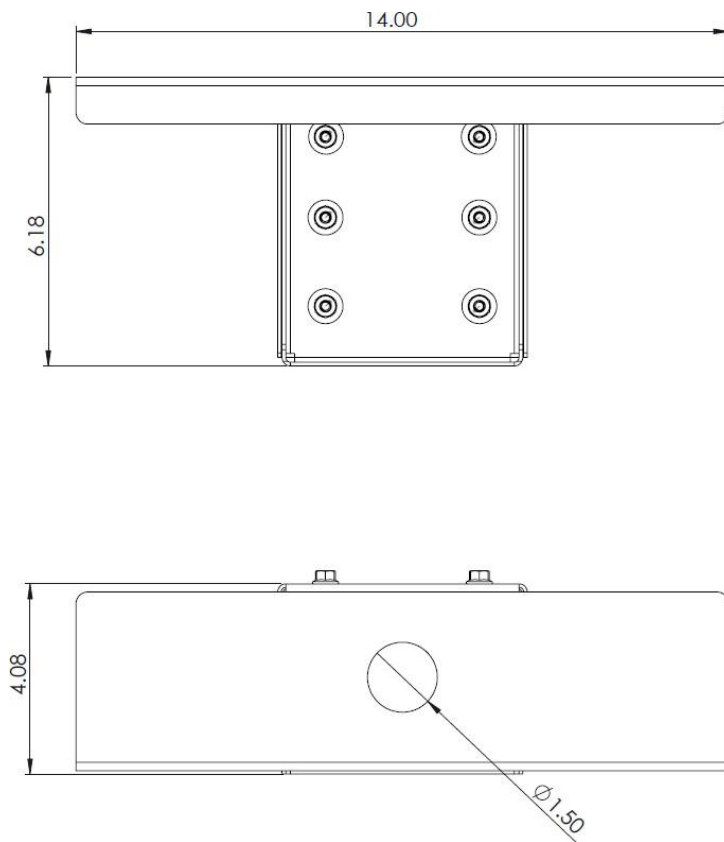


RECTANGLE PLATE L MOUNT BRACKET

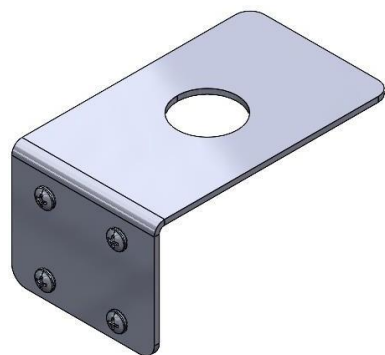


This bracket with a 14-inch-long plate is designed for longer antennas needing a 1.5-inch mounting hole. L bracket includes predrilled holes and slots for mounting. Bottom part of L bracket is solid and allows user to drill holes for customizable mounting.

Part #	Description	Plate Size	Compatible Antennas
PTA0641	Rectangle plate with 1.5" hole and L bracket	14"L x 3.75W	Australian Shepherd, Belgian Shepherd, Irish Setter, K9

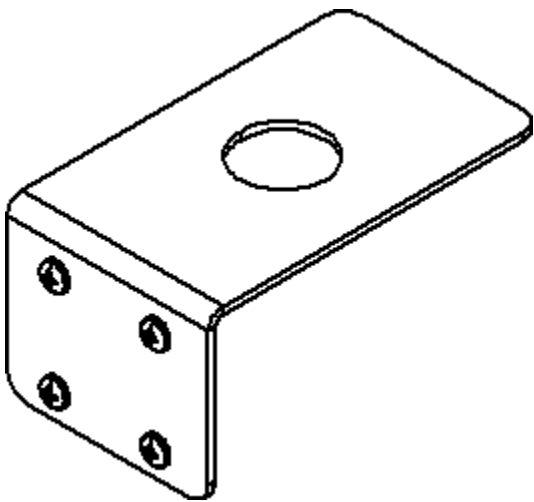
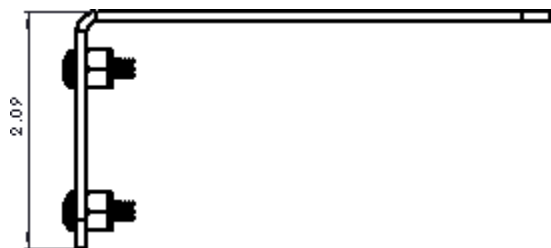
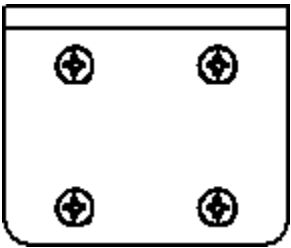
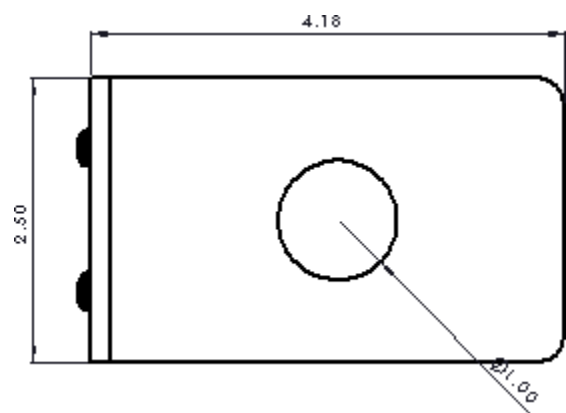


RECTANGLE PLATE L MOUNT BRACKET

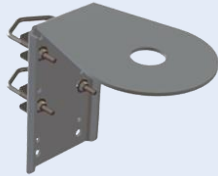
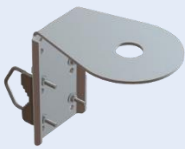
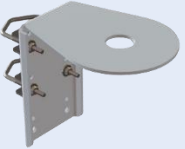
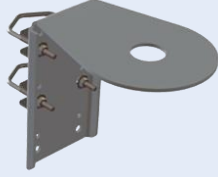
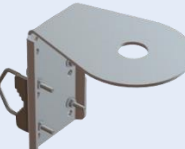
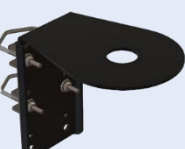
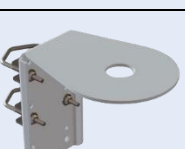
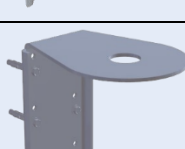
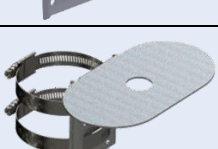


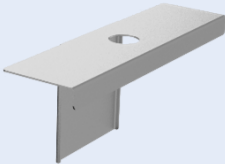

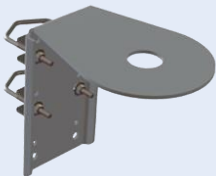
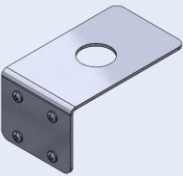
This bracket with a 4-inch-long plate is designed for antennas needing a 1.0-inch mounting hole. L bracket includes predrilled holes and slots for mounting.

Part #	Description	Plate Size	Compatible Antennas
PTA0756	Rectangle plate with 1" hole and L bracket	4.18"L x 2.5"W	Border Collie, Chihuahua S & ST, Doberman, Rottweiler



FIXED MOUNT BRACKETS CHART

Part #	Image	Description	Plate Size	Compatible Antennas
PTA0149		Round plate with 1" hole and pole mount bracket	6.10" D	Chihuahua S & ST, Collie
PTA0149-F		Round plate with 1" hole and pole mount bracket, Horizontal Truss Mounting	6.10" D	Chihuahua S & ST, Collie
PTA0149-MG-W		Round plate with 1" hole and pole mount bracket, Marine Grade, White	6.10" D	Collie
PTA0149H		Round plate with 1.5" hole and pole mount bracket	6.10" D	Great Pyrenees, Husky
PTA0149H-F		Round plate with 1.5" hole and pole mount bracket, Horizontal Truss Mounting	6.10" D	Great Pyrenees, Husky
PTA0149H-MG-B		Round plate with 1.5" hole and pole mount bracket, Marine Grade, Black	6.10" D	Great Pyrenees, Husky
PTA0149H-MG-W		Round plate with 1.5" hole and pole mount bracket, Marine Grade, White	6.10" D	Great Pyrenees, Husky
PTA0149H-W		Round plate with 1.5" hole and Wall Mount Kit	6.10" D	Great Pyrenees, Husky
PTA0637		Mini plate with 1" hole and pole mount bracket	7"L x 4"W	Border Collie, Chihuahua S & ST, Doberman, Rottweiler

PTA0638		Rectangle plate with 1.5" hole and pole mount bracket	14"L x 3.75"W	Australian Shepherd, Belgian Shepherd, Irish Setter, K9
PTA0640		Rectangle plate with 1.5" hole and bracket with no predrilled screw holes	14"L x 3.75"W	Australian Shepherd, Belgian Shepherd, Irish Setter, K9
PTA0641		Rectangle plate with 1.5" hole and L bracket	14"L x 3.75W	Australian Shepherd, Belgian Shepherd, Irish Setter, K9
PTA0721		Pole Mount Bracket, Heavy Duty, High Vibration	6.10" D	Great Pyrenees, Husky
PTA0756		Rectangle plate with 1" hole and L bracket	4.18"L x 2.5"W	Border Collie, Chihuahua S & ST, Doberman, Rottweiler