



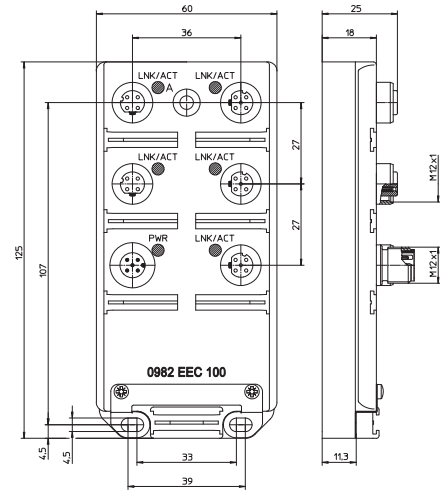
## Industrial Ethernet Switches for PROFINET or Ethernet/IP Applications

0982 EEC 100



### 5 Port (unmanaged switch)

Ethernet-Switch, IP 67, 5-port switch for 10 and 100 Mbaud transmission rates, M12 socket 4 poles D coding, M12 power supply 5 poles standard coding.



### Pin Assignment

#### M12 Socket



- 1 = TD+
- 2 = RD+
- 3 = TD-
- 4 = RD-
- 5 = shield

#### Power supply M12



- 1 = 24 V
- 2 = n.c
- 3 = GND (0 V)
- 4 = n.c.
- 5 = earth



## Industrial Ethernet Switches for PROFINET or Ethernet/IP Applications

0982 EEC 100

### Technical Data

#### Environmental

Degree of protection	IP 67
Operating temperature range	0°C (32°F) to +60°C (+140°F)

#### Mechanical

Weight	210 g
Housing material	PUR

#### Switch Functionality

Mode of operation	Store and forward
Number of storable addresses	1000
Aging time	300 s
Tagging	EtherNet telegrams with VLAN tag field are transmitted unchanged

#### Ethernet Ports

	<b>10BASE-T / 100BASE-TX</b>
Data transmission rate	10 Mbit/s and 100 Mbit/s
Cable type	Twisted Pair (TP/TX) or star quad, CAT 5, shielded
Number of ports	5
Length of a TP segment	100 m
Link control	yes
Autopolarity	yes
Autonegotiation	yes
Autocrossing	yes
Channel status indicator	LED green per port

#### Electronics Power Supply

	<b>PWR</b>
Rated voltage	24 V DC
Voltage range	18–30 V DC
Power consumption	2.4 W
Reverse polarity protection	yes
Indication	LED green

#### Included in delivery/accessories

Dust covers M12	2 pieces
Attachable labels	10 pieces

Part Number

0982 EEC 100



The application of these products in harsh environments should always be checked before use.  
Specifications subject to alteration.