



Z5420

Floor Mounted Siphon Jet Service Sink

TAG _____



Z5420

- 27" [686 mm] x 20-1/2" [521 mm]
- Vitreous china
- Antimicrobial ceramic glaze to create a permanent surface that inhibits the growth of stain and odor causing mold, mildew and bacteria, thus minimizing the need for cleaning and water to cleanse the bowl.
- Floor mounted service sink
- Siphon jet action
- Integral flushing rim
- 1-1/2" top spud
- Water surface: 10" x 10"
- Trap seal depth: 3-1/8"
- Shipping Weight: 60 lbs.

Z5420 Series

Recommended Trim:

- ☐ **Z6000AV-BWN1** AquaVantage® AV exposed closet flush valve with bedpan washer.

Optional Trim:

- ☐ **Z60843AV-BWN** AquaVantage® AV exposed clinical sink flush valve with bedpan washer and service sink faucet.
- ☐ **Z85500-WM** Wall-mounted double foot pedal valve.

Engineering Specification:

- ☐ **Z5420** Vitreous china, floor mounted blowout service sink with integral flushing rim, antimicrobial ceramic glaze and 1-1/2" top spud. Front & side stainless steel rim guards included.

This space is for Architectural/engineering Approval

These dimensions and specifications are subject to change without notice.

Fixture dimensions meet ANSI/ASME standard A112.19.2 and CAN/CSA B45 requirements.

See Zurn One Systems for suggested packages.

Zurn Industries, Commercial Fixtures

5900 Elwin Buchanan Drive - Sanford, NC 27330 · Phone: 919-775-2255 · Fax: 919-775-3541 · www.zurn.com

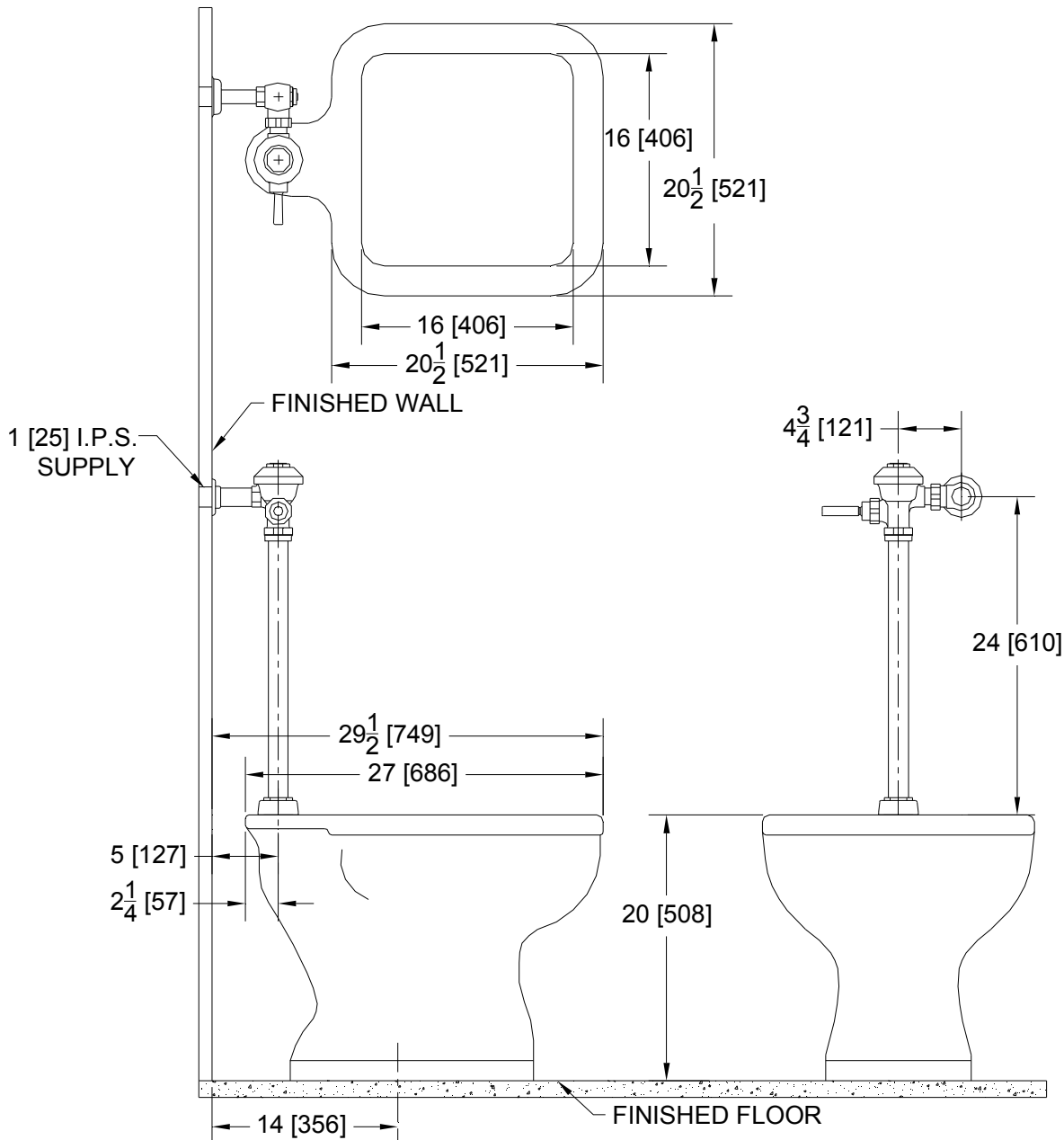
Z5420

Floor Mounted Siphon Jet Service Sink Rough-in

TAG _____

Rough-in dimensions for Z5420 Series

• Z5420 Service Sink



These dimensions and specifications are subject to change without notice.

*Note:
Z6017AV shown above*

*Fixture dimensions meet ANSI/ASME standard
A112.19.2M and CAN/CSA B45 requirements.*



Zurn Industries, Commercial Fixtures

5900 Elwin Buchanan Drive - Sanford, NC 27330 · Phone: 919-775-2255 · Fax: 919-775-3541 · www.zurn.com