



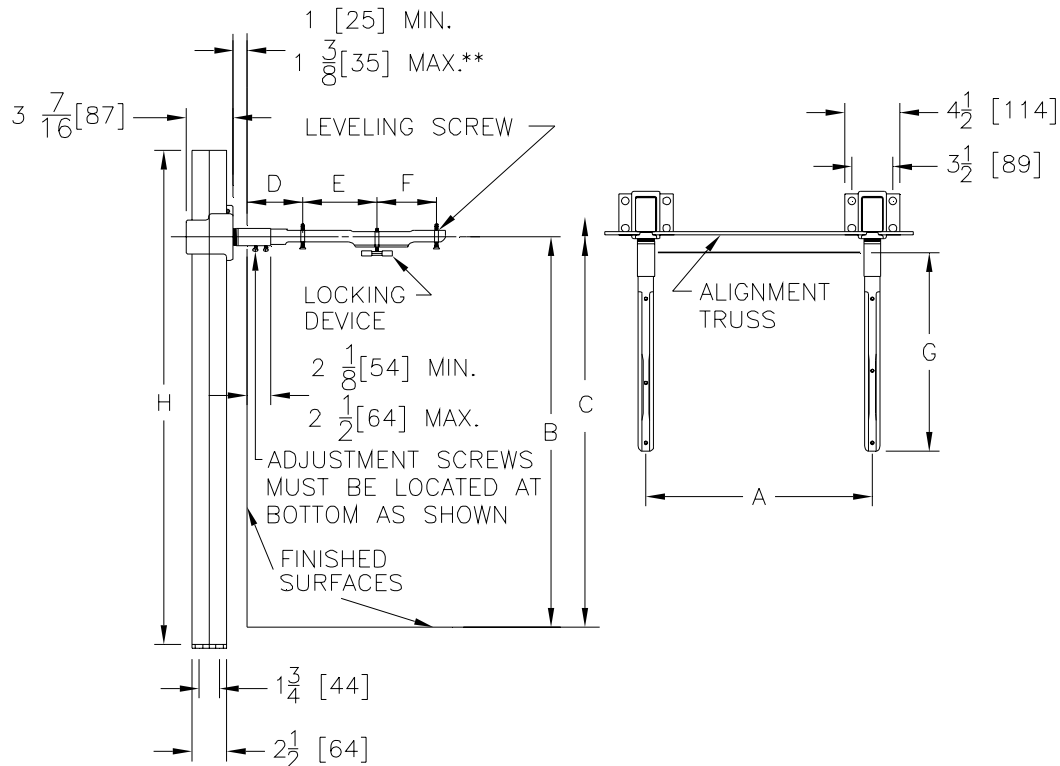
# Z1231

## CONCEALED ARM SYSTEM WALL LAVATORIES

SPECIFICATION SHEET

TAG \_\_\_\_\_

Dimensional Data (inches and [ mm ]) are Subject to Manufacturing Tolerances and Change Without Notice



\*\* WITH STANDARD SLEEVE LENGTH OF 4 [102]

Product No.	Approx. Wt. Lbs. [kg]
Z1231	45 [20]

**ENGINEERING SPECIFICATION:** ZURN Z1231 Lavatory support system with concealed arms. Complete with Dura-Coated rectangular steel uprights with welded feet, cast iron adjustable headers, concealed arms, steel sleeves, alignment truss, and mounting fasteners.

### OPTIONS (Check/specify appropriate options)

#### PREFIXES

\_\_\_ Z Dura-Coated System with Support Plate\*

#### SUFFIXES

- \_\_\_ -AL Adapter Lug
- \_\_\_ -CU Floor to Ceiling Upright (Specify Height Required)
- \_\_\_ -D Back to Back System
- \_\_\_ -E2 Concealed Arm Escutcheons 2 [51] Long
- \_\_\_ -E4 Concealed Arm Escutcheons 4 [102] Long
- \_\_\_ -E6 Concealed Arm Escutcheons 6 [152] Long
- \_\_\_ -EZ Time Saver Installation Unit
- \_\_\_ -SL Sleeve Length Over 4 [102] (Specify Length)
- \_\_\_ -WS Wall Support Valve Plate (Specify Valve Name and Number)
- \_\_\_ -79 Paraplegic Rough-in

\*REGULARLY FURNISHED UNLESS OTHERWISE SPECIFIED

REV. H DATE: 01/03/08 C.N. NO. 97904

DWG. NO. 58855 PRODUCT NO. Z1231

ZURN INDUSTRIES, LLC. ♦ SPECIFICATION DRAINAGE OPERATION ♦ 1801 Pittsburgh Ave. ♦ Erie, PA 16514

Phone: 814/455-0921 ♦ Fax: 814/454-7929 ♦ World Wide Web: www.zurn.com

In Canada: ZURN INDUSTRIES LIMITED ♦ 3544 Nashua Drive ♦ Mississauga, Ontario L4V1L2 ♦ Phone: 905/405-8272 Fax: 905/405-1292