

C.F.F. SS · SERIES

316 STAINLESS STEEL VALVES



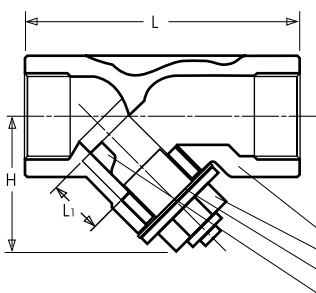
Y-STRAINER

1/4" – 2"



- Investment cast body 600 PSI (20 BAR) W.O.G.
- Max pressure Max working temperature 230°C.
- End-to-end length conforms to DIN 3202, Part 4, M8 series
- (PN16, PN40)
- Screens; 1/4" to 2" - 20 Mesh
- Threads to ANSI B1.20.1 (NPT)

Manufactured in accordance with
ISO 9002 quality standards.



NAME/MATERIAL

- | | |
|---|-----------------------|
| 1 | Body / ASTM-CF8M-A351 |
| 2 | Cap / ASTM-CF8M-A351 |
| 3 | Joint Gasket / PTFE |
| 4 | Screen / AISI 316 |

DIMENSIONS			
Size	(mm) L	(mm) H	(mm) L1
1/4"	65	43	14
3/8"	65	43	14
1/2"	65	43	14
3/4"	75	53	19
1"	90	60	23
1-1/4"	110	72	27.5
1-1/2"	120	90	32.5
2"	150	110	40

(1/4" and 3/8" Factory Order)

Design and materials are subject to change without notice.

Visit us on-line at:
www.cffstainless.com