

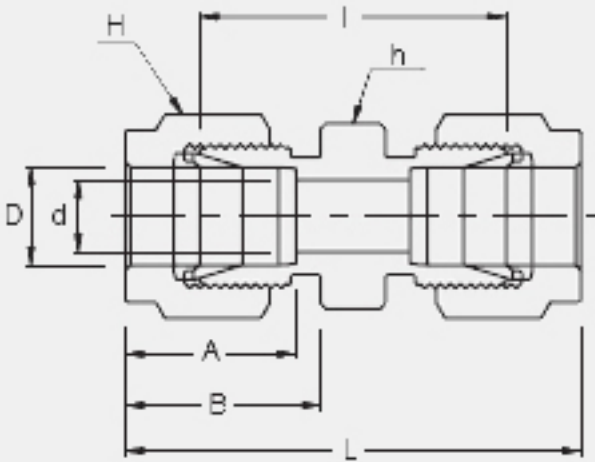
## APPLICATIONS:

Process instrumentation, High Temperature and Cryogenic services, High pressure service, Vacuum services.



## FEATURES:

- ➔ Two ferrule design
- ➔ Stainless steel, Duplex, Carbon steel, Hastelloy, Alloy 400, 600, 825...
- ➔ Gaugeability
- ➔ Vibration resistance
- ➔ Reliable remake capabilities
- ➔ Excellent Leak-Free Sealing System in high thermal stresses and high impulse



## INTERCHANGEABLE WITH:

**Swagelok:** SS-1610-6  
**SSP Duolok:** ISSD16U  
**Parker A-Lok:** 16SC16-SS

## CONNECTS WITH FRACTIONAL TUBE

Part No.	Tube O.D. D (inch)	d Min	Width Across Flat		A	B	I	L
			h (inch)	H (inch)				
SU - 16	1	22.35	1-3/8	1-1/2	31.24	26.41	40.38	64.77