

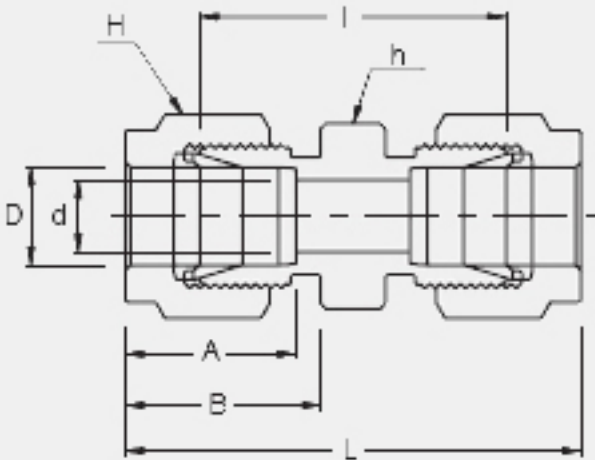
APPLICATIONS:

Process instrumentation, High Temperature and Cryogenic services, High pressure service, Vacuum services.



FEATURES:

- ➔ Two ferrule design
- ➔ Stainless steel, Duplex, Carbon steel, Hastelloy, Alloy 400, 600, 825...
- ➔ Gaugeability
- ➔ Vibration resistance
- ➔ Reliable remake capabilities
- ➔ Excellent Leak-Free Sealing System in high thermal stresses and high impulse



INTERCHANGEABLE WITH:

Swagelok: SS-1210-6
SSP Duolok: ISSD12U
Parker A-Lok: 12SC12-SS

CONNECTS WITH FRACTIONAL TUBE

Part No.	Tube O.D. D (inch)	d Min	Width Across Flat		A	B	I	L
			h (inch)	H (inch)				
SU - 12	3/4	15.74	1-1/16	1-1/8	24.38	21.84	33.27	53.59