

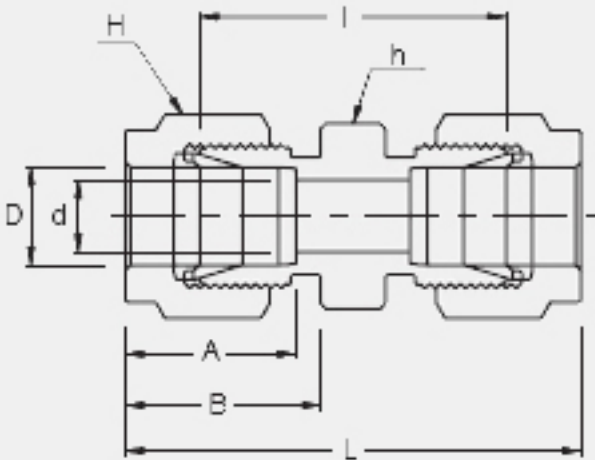
APPLICATIONS:

Process instrumentation, High Temperature and Cryogenic services, High pressure service, Vacuum services.



FEATURES:

- ➔ Two ferrule design
- ➔ Stainless steel, Duplex, Carbon steel, Hastelloy, Alloy 400, 600, 825...
- ➔ Gaugeability
- ➔ Vibration resistance
- ➔ Reliable remake capabilities
- ➔ Excellent Leak-Free Sealing System in high thermal stresses and high impulse



INTERCHANGEABLE WITH:

Swagelok: SS-1010-6
SSP Duolok: ISSD10U
Parker A-Lok: 10SC10-SS

CONNECTS WITH FRACTIONAL TUBE

Part No.	Tube O.D. D (inch)	d Min	Width Across Flat		A	B	I	L
			h (inch)	H (inch)				
SU - 10	5/8	12.70	15/16	1	24.38	21.84	31.75	52.07