

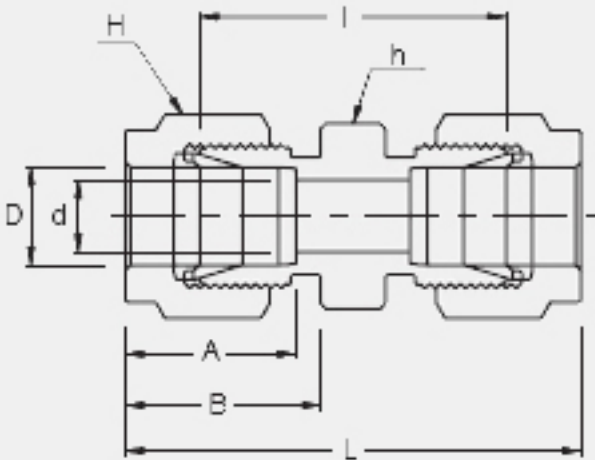
APPLICATIONS:

Process instrumentation, High Temperature and Cryogenic services, High pressure service, Vacuum services.



FEATURES:

- ➔ Two ferrule design
- ➔ Stainless steel, Duplex, Carbon steel, Hastelloy, Alloy 400, 600, 825...
- ➔ Gaugeability
- ➔ Vibration resistance
- ➔ Reliable remake capabilities
- ➔ Excellent Leak-Free Sealing System in high thermal stresses and high impulse



INTERCHANGEABLE WITH:

Swagelok: SS-810-6
SSP Duolok: ISSD8U
Parker A-Lok: 8SC8-SS

CONNECTS WITH FRACTIONAL TUBE

Part No.	Tube O.D. D (inch)	d Min	Width Across Flat		<u>A</u>	<u>B</u>	<u>I</u>	<u>L</u>
			<u>h (inch)</u>	<u>H (inch)</u>				
SU - 8	1/2	10.41	13/16	7/8	22.86	21.84	30.98	51.30