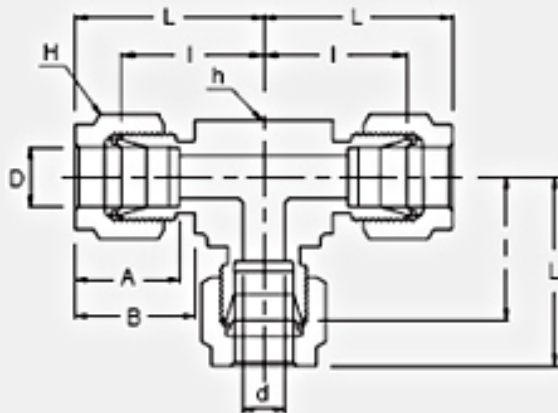


APPLICATIONS:



Process instrumentation, High Temperature and Cryogenic services, High pressure service, Vacuum services.



- ➔ Two ferrule design
- ➔ Stainless steel, Duplex, Carbon steel, Hastelloy, Alloy 400, 600, 825
- ➔ Gaugeability
- ➔ Vibration resistance
- ➔ Reliable remake capabilities
- ➔ Excellent Leak-Free Sealing System in high thermal stresses and high impulse

INTERCHANGEABLE WITH:

Swagelok: SS-1210-3
SSP Duolok: ISSD12UT
Parker A-Lok: 12ET12-SS

| Part No. | Tube O.D. D (inch) | d Min | Width Across Flat | | A | B | I | L |
|----------|-----------------------|----------|-------------------|----------|-------|-------|-------|-------|
| | | | h (inch) | H (inch) | | | | |
| SUT-12 | 3/4 | 15.74 | 1-1/16 | 1-1/8 | 24.38 | 21.84 | 29.71 | 39.87 |