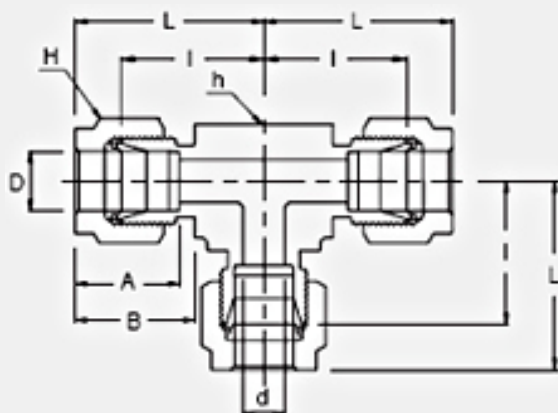


APPLICATIONS:



Process instrumentation, High Temperature and Cryogenic services, High pressure service, Vacuum services.



- ➔ Two ferrule design
- ➔ Stainless steel, Duplex, Carbon steel, Hastelloy, Alloy 400, 600, 825
- ➔ Gaugeability
- ➔ Vibration resistance
- ➔ Reliable remake capabilities
- ➔ Excellent Leak-Free Sealing System in high thermal stresses and high impulse

INTERCHANGEABLE WITH:

Swagelok: SS-810-3
SSP Duolok: ISSD8UT
Parker A-Lok: 8ET8-SS

Part No.	Tube O.D. D (inch)	d Min	Width Across Flat		A	B	I	L
			h (inch)	H (inch)				
SUT-8	1/2	10.41	13/16	7/8	22.86	21.84	25.90	36.06