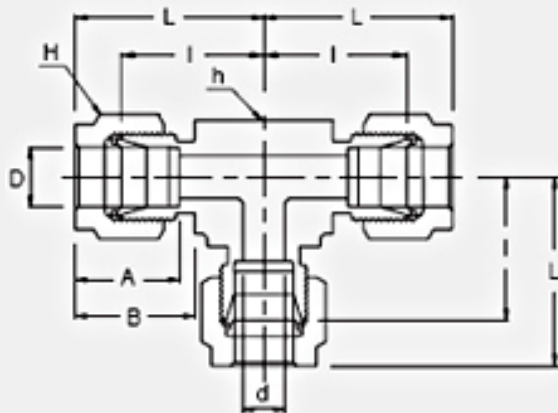


### APPLICATIONS:



Process instrumentation, High Temperature and Cryogenic services, High pressure service, Vacuum services.



- ➔ Two ferrule design
- ➔ Stainless steel, Duplex, Carbon steel, Hastelloy, Alloy 400, 600, 825
- ➔ Gaugeability
- ➔ Vibration resistance
- ➔ Reliable remake capabilities
- ➔ Excellent Leak-Free Sealing System in high thermal stresses and high impulse

### INTERCHANGEABLE WITH:

**Swagelok:** SS-600-3

**SSP Duolok:** ISSD6UT

**Parker A-Lok:** 6ET6-SS

Part No.	Tube O.D. D (inch)	d Min	Width Across Flat		A	B	I	L
			h (inch)	H (inch)				
SUT-6	3/8	7.11	5/8	11/16	16.76	19.30	23.11	30.48