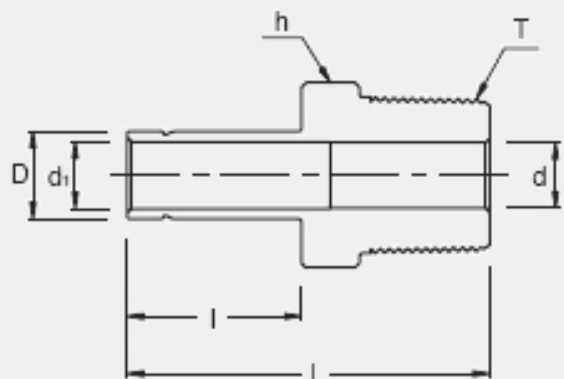
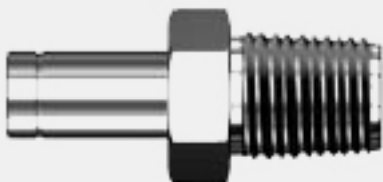


APPLICATIONS:

Process instrumentation, High Temperature and Cryogenic services, High pressure service, Vacuum services.



- ➔ Two ferrule design
- ➔ Stainless steel, Duplex, Carbon steel, Hastelloy, Alloy 400, 600, 825
- ➔ Gaugeability
- ➔ Vibration resistance
- ➔ Reliable remake capabilities
- ➔ Excellent Leak-Free Sealing System in high thermal stresses and high impulse

INTERCHANGEABLE WITH:

Swagelok: SS-4-TA-1-4
SSP Duolok: ISSD4MA4
Parker A-Lok: 4MA4N-SS

CONNECTS FRACTIONAL SUPERLOK PORT TO FEMALE NPT THREAD

Part No.	Tube O.D. D (inch)	T* (NPT)	d Min	d1	Width Across Flat H (inch)	I	L
SMA 4-4N	1/4	1/4	4.82	4.82	9/16	15.75	37.08

* ISO Tapered Threads are available upon request