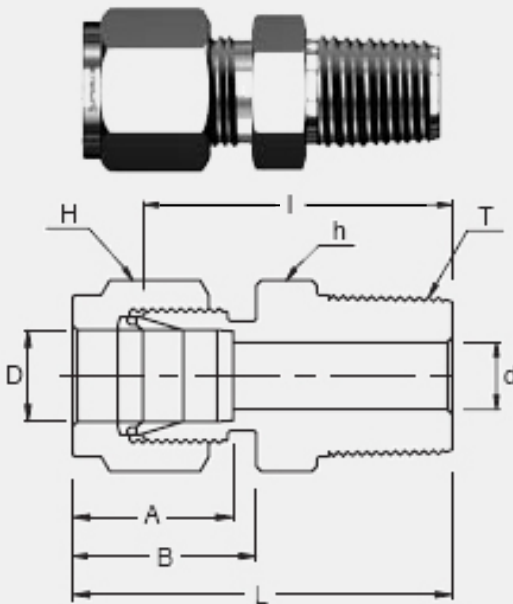


APPLICATIONS:

Process instrumentation, High Temperature and Cryogenic services, High pressure service, Vacuum services.



- ➔ Two ferrule design
- ➔ Stainless steel, Duplex, Carbon steel, Hastelloy, Alloy 400, 600, 825
- ➔ Gaugeability
- ➔ Vibration resistance
- ➔ Reliable remake capabilities
- ➔ Excellent Leak-Free Sealing System in high thermal stresses and high impulse

INTERCHANGEABLE WITH:

Swagelok: SS-1210-1-12
SSP Duolok: ISSD12MC12
Parker A-Lok: 12MSC12N-SS

CONNECTS FRACTIONAL TUBE TO FEMALE NPT THREAD

Part No.	Tube O.D. D (inch)	T (NPT)	d Min	Width Across Flat		A	B	I	L
				h (inch)	H (inch)				
SMC 12-12N	3/4	3/4	15.74	1-1/16	1-1/8	24.38	21.84	40.38	50.54