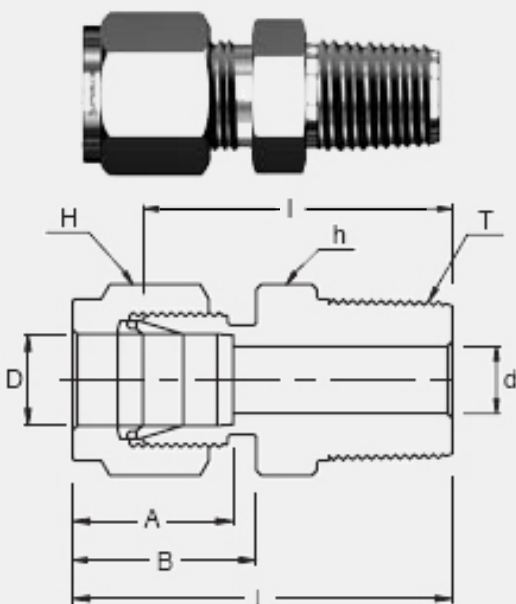


## APPLICATIONS:

Process instrumentation, High Temperature and Cryogenic services, High pressure service, Vacuum services.



- ➔ Two ferrule design
- ➔ Stainless steel, Duplex, Carbon steel, Hastelloy, Alloy 400, 600, 825
- ➔ Gaugeability
- ➔ Vibration resistance
- ➔ Reliable remake capabilities
- ➔ Excellent Leak-Free Sealing System in high thermal stresses and high impulse

## INTERCHANGEABLE WITH:

**Swagelok:** SS-810-1-6  
**SSP Duolok:** ISSD8MC6  
**Parker A-Lok:** 8MSC6N-SS

## CONNECTS FRACTIONAL TUBE TO FEMALE NPT THREAD

Part No.	Tube O.D. D (inch)	T (NPT)	d Min	Width Across Flat		A	B	I	L
				h (inch)	H (inch)				
SMC 8-6N	1/2	3/8	9.65	13/16	7/8	22.86	21.84	33.27	43.43