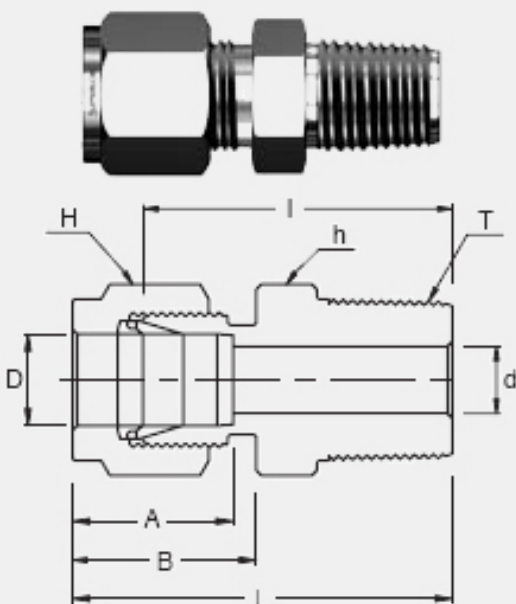


APPLICATIONS:

Process instrumentation, High Temperature and Cryogenic services, High pressure service, Vacuum services.



- ➔ Two ferrule design
- ➔ Stainless steel, Duplex, Carbon steel, Hastelloy, Alloy 400, 600, 825
- ➔ Gaugeability
- ➔ Vibration resistance
- ➔ Reliable remake capabilities
- ➔ Excellent Leak-Free Sealing System in high thermal stresses and high impulse

INTERCHANGEABLE WITH:

Swagelok: SS-600-1-2
SSP Duolok: ISSD6MC2
Parker A-Lok: 6MSC2N-SS

CONNECTS FRACTIONAL TUBE TO FEMALE NPT THREAD

Part No.	Tube O.D. D (inch)	T (NPT)	d Min	Width Across Flat		A	B	I	L
				h (inch)	H (inch)				
SMC 6-2N	3/8	1/8	4.82	5/8	11/16	16.76	19.30	27.94	35.30