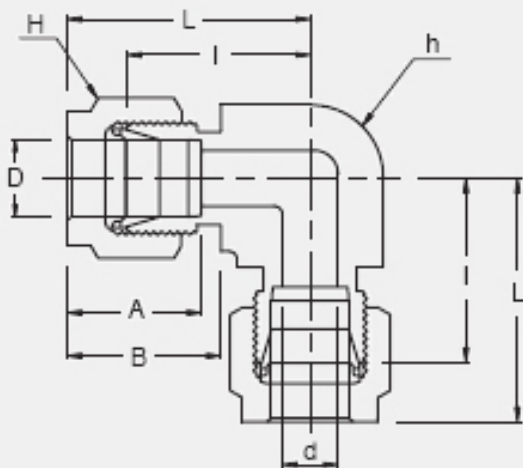


### APPLICATIONS:



Process instrumentation, High Temperature and Cryogenic services, High pressure service, Vacuum services.



- ➔ Two ferrule design
- ➔ Stainless steel, Duplex, Carbon steel, Hastelloy, Alloy 400, 600, 825
- ➔ Gaugeability
- ➔ Vibration resistance
- ➔ Reliable remake capabilities
- ➔ Excellent Leak-Free Sealing System in high thermal stresses and high impulse

### INTERCHANGEABLE WITH:

**Swagelok:** SS-1210-9  
**SSP Duolok:** ISSD12UE  
**Parker A-Lok:** 1EE12-SS

### CONNECTS WITH FRACTIONAL TUBE

<u>Part No.</u>	<u>Tube O.D. D (inch)</u>	<u>d Min</u>	<u>Width Across Flat</u>		<u>A</u>	<u>B</u>	<u>I</u>	<u>L</u>
			<u>h (inch)</u>	<u>H (inch)</u>				
SUE-12	3/4	15.74	1-1/16	1-1/8	24.38	21.84	29.71	39.87