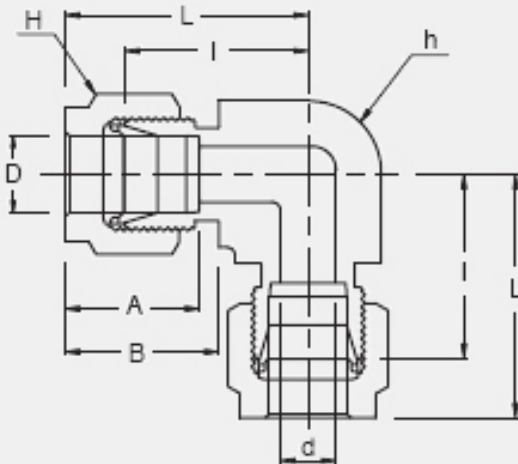


APPLICATIONS:



Process instrumentation, High Temperature and Cryogenic services, High pressure service, Vacuum services.



- ➔ Two ferrule design
- ➔ Stainless steel, Duplex, Carbon steel, Hastelloy, Alloy 400, 600, 825
- ➔ Gaugeability
- ➔ Vibration resistance
- ➔ Reliable remake capabilities
- ➔ Excellent Leak-Free Sealing System in high thermal stresses and high impulse

INTERCHANGEABLE WITH:

Swagelok: SS-810-9

SSP Duolok: ISSD8UE

Parker A-Lok: 1EE8-SS

CONNECTS WITH FRACTIONAL TUBE

<u>Part No.</u>	<u>Tube O.D. D (inch)</u>	<u>d Min</u>	<u>Width Across Flat</u>		<u>A</u>	<u>B</u>	<u>I</u>	<u>L</u>
			<u>h (inch)</u>	<u>H (inch)</u>				
SUE-8	1/2	10.41	13/16	7/8	22.86	21.84	25.90	36.06