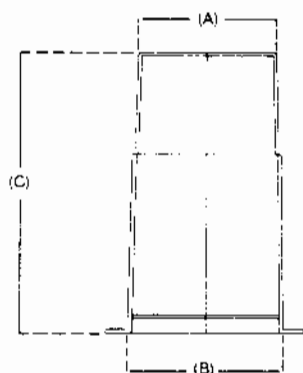


How to Cut the Cost of Holes in Half!

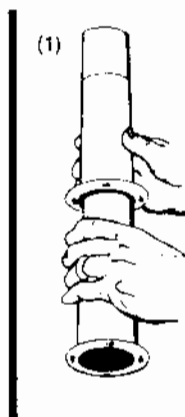
CRETE-SLEEVE™

- Injection Molded Linear Polyethylene
- One-piece Unit, No Assembly.
- Installs in Seconds
- Won't Chip, Dent, Split or Bend
- Removes Easily From Form.
- Round Uniform Holes Every Time.
- Safe To Use, No Sharp Edges.

Crete-Sleeve Forms are available in many sizes.



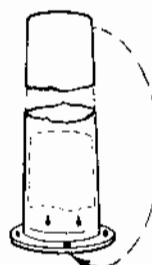
Dimensions shown at points A & B are actual hole diameters. Dimension C refers to height.



Crete-Sleeve Forms are adjustable for any slab thickness.

(1) For slabs deeper than 8 3/4", telescope two or more together.

(2) For slabs shallower than 8 3/4" or for a smooth slab finish, cut off the tops of Crete-sleeve Forms and push them up through the bottom halves (top side up as indicated). No more stuffing sand, rags or paper to plug holes.



SIZE CHART Diameters from 1 1/2" to 12"

Top Hole Dia. (A)	1 1/2"	2"	3"	4"	5"	6"	8"	10"	12"
Bottom Hole Dia. (B)	1 3/4"	2 13/32"	3 13/32"	4 13/32"	5 13/32"	6 13/32"	8 1/16"	10 7/16"	12 7/16"
Overall Length (C)	8 7/8"	8 7/4"	8 7/4"	8 7/4"	8 3/4"	8 3/4"	8 3/4"	9 1/8"	9 1/8"

CRETE-SLEEVE™
"PLASTIC HOLE FORMS FOR
THE BUILDING INDUSTRIES"

PHONE: (651) 454-3800
1-800-74-SLEEVE

P.O. BOX 16372
ST. PAUL, MINNESOTA 55116

FAX: (651) 454-8844
1-800-94-SLEEVE

www.crete-sleeve.com