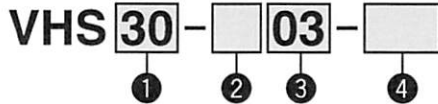


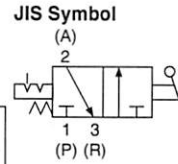
Pressure Relief 3 Port Valve: (V)

With the use of a 3-port valve for residual pressure release, pressure left in the line can be easily exhausted.

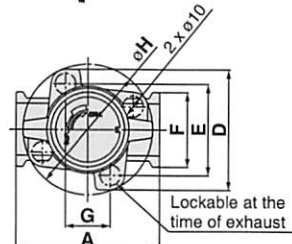
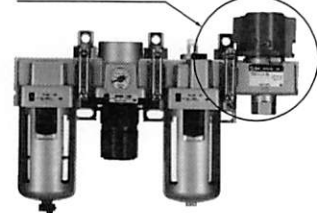


- Semi-standard: Select one each for a to b.
- Semi-standard symbol: When more than one specification is required, indicate in alphabetic order.
Example) VHS30-03-RZ

	Symbol	Description	① Body size			
			20	30	40	50
② Thread type	NII	Rc	●	●	●	●
	N (Note)	NPT	●	●	●	●
	F (Note)	G	●	●	●	●
③ Port size	+					
	01	1/8	●	—	—	—
	02	1/4	—	●	—	—
	03	3/8	—	●	●	—
	04	1/2	—	—	●	—
	06	3/4	—	—	●	●
④ Semi-standard	+					
	a Flow direction	NII Flow direction: Left to right	●	●	●	●
	R Flow direction: Right to left		●	●	●	●
	b Pressure unit	NII Name plate in imperial units: MPa	●	●	●	●
	Z (Note) Name plate in imperial units: psi		●	●	●	●



3-port valve for residual pressure release



Note) For thread type: NPT only. This product is for overseas use only according to the new Measurement Law. (The SI unit type is provided for use in Japan.)

Specifications

Model	Port size		Effective area (mm ²) (): Cv factor	
	IN, OUT	EXH	IN→OUT	OUT→EXH
VHS20	1/8	1/8	10 (0.54)	11 (0.60)
	1/4	1/8	14 (0.76)	16 (0.87)
VHS30	1/4	1/4	16 (0.87)	14 (0.76)
	3/8	1/4	31 (1.68)	29 (1.57)
VHS40	1/4	3/8	27 (1.46)	36 (1.95)
	3/8	3/8	38 (2.06)	40 (2.17)
VHS40-06	1/2	3/8	55 (2.98)	42 (2.28)
	3/4	1/2	77 (1.73)	49 (2.66)
VHS50	3/4	1/2	82 (4.44)	50 (2.71)
	1	1/2	125 (6.78)	53 (2.87)

Note) Use an air filter on the IN side for operating protection.

Caution on Mounting

- If a tube, stop valve or silencer is connected to the exhaust port of the VHS20/30, the effective sectional area should be larger than the figure indicated in the following table, to prevent malfunction caused by back pressure. (This is not applicable to the VHS40/50.)

Model	Effective area (mm ²)
VHS20	5
VHS30	5

Cross Spacer: M5 x 0.8, 1/8, 1/4, 3/8, 1/2

Pipings are possible in all 4 directions.

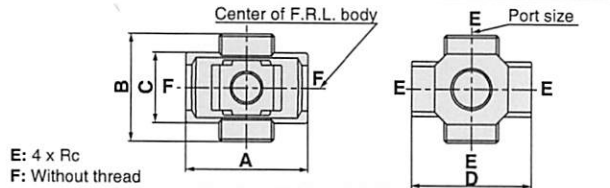
IN/OUT ports are not machined for threads.

Please contact SMC if threaded (machined) ports are required.



Caution on Mounting

- When mounting a cross interface directly on the IN side of the lubricator, be sure to use the AKM series check valve between the lubricator and cross interface.
- Factory mounting of a cross interface on the AC model is available as a special order.



E: 4 x Rc
F: Without thread

Model	Port size	A	B	C	D	Applicable model
Y14-M5	M5	23	16	14	25	AC10□
Y24-□01	1/8	40	40	22	40	AC20□
Y24-□02	1/4	49	43	28	48	AC25□, AC30□
Y34-□01	1/8	60	48	36	54	AC40□
Y34-□02	1/4	72	62	40	62	AC40□-06
Y44-□02	1/4					
Y44-□03	3/8					
Y54-□03	3/8					
Y54-□04	1/2					

Note 1) □ in model numbers indicates a thread type. No indication is necessary for Rc; however, indicate N for NPT, and F for G.

Note 2) If threaded IN/OUT ports are required, they are available as a special order. Please contact SMC.