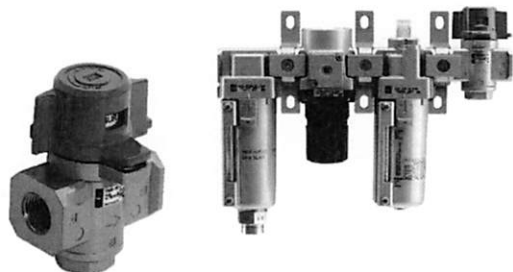
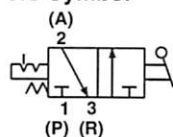


## Residual Pressure Relief 3 Port Valve (V)

With the use of a 3 port valve for residual pressure release, pressure left in the line can be easily exhausted.



### JIS Symbol



Model	Port Size		Effective area mm <sup>2</sup> (Cv)	
	IN, OUT	EXH	IN to OUT	OUT to EXH
VHS20	1/4	1/8	14 (0.76)	16 (0.87)
VHS30	3/8	1/4	31 (1.68)	29 (1.57)
VHS40	1/2	3/8	55 (2.98)	42 (2.28)

Paint color (Standard) Handle: Red Body: Platinum silver  
Use an air filter on the IN side for operating protection.

## How To Order

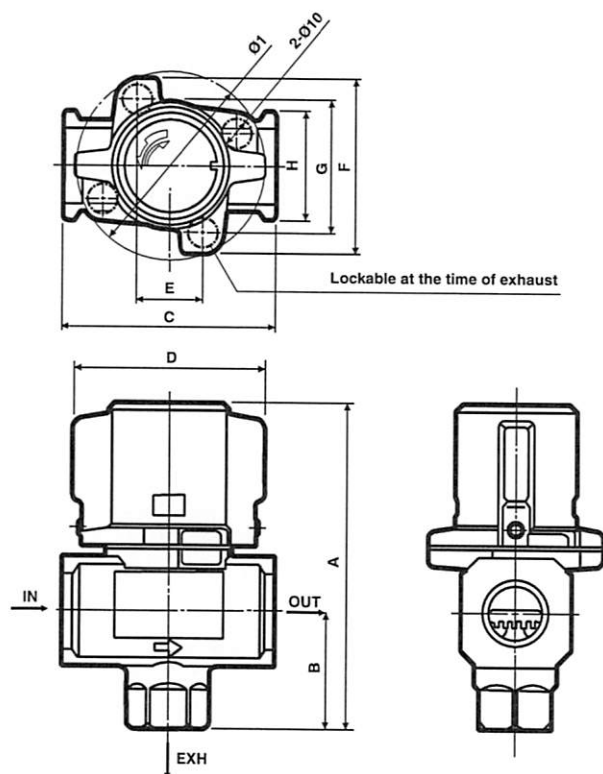
**VHS 30 - N 02 - Z - X513**

- Residual Pressure Relief 3 Port Valve
- Body Size
- Thread Type
- Body Size
- With External Epoxy Coating, Stainless Fasteners
- Name Plate In Imperial Units (PSI, °F)

Symbol	Applicable Model
20	AC21
30	AC31
40	AC41

Symbol	Port Size	Body Size
02	1/4	20
03	3/8	30
04	1/2	40

Note: Other sizes, thread forms, options, etc. may be possible, please contact SMC for availability.



### Dimensions

Model	A	B	C	D	E	F	G	H	I
VHS20	59	20	40	34	—	45	33	28	45
VHS30	78	29	53	46	—	55	42	30	55
VHS40	107	39	70	63	22	58	44	36	63

## Caution

- If a stop valve or a silencer is connected to the exhaust port of VHS20/30, the effective sectional area should be larger than the figure indicated in the following table, to prevent malfunction caused by back pressure. (This is not applicable to VHS40)

Model	Effective area (mm <sup>2</sup> )
VHS20	5
VHS30	5

- If unit is to be used in a washdown application, avoid directing fluid into the exhaust port.