

Hose Grip Clothes Washer Connector



- Fits 1 1/2" or 2" standpipe
- Fits 1" - 1 7/16" drain hose
- Securely holds drain hose in standpipe

PART NO.	DESCRIPTION	CTN/MSTR
D08001	Drain hose connector	1/100

Flexible Drain Trap



PART NO.	DESCRIPTION	CTN QTY
J01001	1 1/4" or 1 1/2" tubular trap j-bend	1/20

Washing Machine Boxes with Valves



B05900



B05901

- Long shank MIP valve
- White box with valve installed
- Combo 1 1/2" or 2" drain
- CARTON QUANTITIES ONLY

PART NO.	DESCRIPTION	CTN/MSTR
B05900	Offset drain	1/10
B05901	Center drain	1/10

Washing Machine Boxes with Hammer Arrestor



B05920



B05921



B05922



B05923



B05924

- 1/4 Turn valves or lever handle mixer valve

Dual Drain

PART NO.	DESCRIPTION	CTN/MSTR
B05920	1/4 Turn valve with Solder connection	1/10
B05921	1/4 Turn valve with CPVC connection	1/10
B05922	Single lever handle with Solder connection	1/10

Center Drain

PART NO.	DESCRIPTION	CTN/MSTR
B05923	1/4 Turn valve with Solder connection	1/10
B05924	1/4 Turn valve with CPVC connection	1/10

Replacement Frame

PART NO.	DESCRIPTION	CTN/MSTR
B05927	Replacement Frame for Washer Box	1/10
B05928	Replacement Frame for Icemaker Box	1/10

Icemaker Boxes with Hammer Arrestor



B05925



B05926

- 1/4 Turn valve

PART NO.	DESCRIPTION	CTN/MSTR
B05925	Icemaker box with Solder connection	1/10
B05926	Icemaker box with CPVC connection	1/10

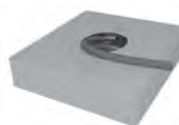
Icemaker Boxes with Valves



- White box with valve installed
- CARTON QUANTITIES ONLY

PART NO.	DESCRIPTION	CTN/MSTR
B05910	Icemaker box with brass valve	1/10
B05911	Icemaker box with Flowguard all CPVC icemaker valve	1/10

Dishwasher Hose



- IAPMO/UPC listed; meets ANSI, AHAM-DWI specifications
- 5/8" connects dishwasher pump to airgap inlet or dishwasher tailpiece
- 7/8" connects airgap outlet to branch tailpiece or disposal
- EPDM material with single spiral reinforcement
- Resists kinking
- Marked per foot
- -40°F to +180°F

PART NO.	SIZE	WP	BURST PRESSURE	CTN QTY
D10625	5/8" ID x 50'	90	200	1
D10875	7/8" ID x 50'	70	100	1

Dishwasher Drain Connector



- Includes two worm gear clamps

PART NO.	DESCRIPTION	CTN/MSTR
D10001	Universal connector	50/200

Washing Machine Hose



Straight Female



With 90° Elbow

- For hot or cold use
- Bagged with washers
- Standard female hose threads
- Bursting pressure 800 lbs. per sq. inch
- 3/8" ID

With 90° Elbow

PART NO.	LENGTH	CTN/MSTR
J04104	4'	1/12
J04105	5'	1/12
J04106	6'	1/12

Straight Female

PART NO.	LENGTH	CTN/MSTR
J04004	4'	1/12
J04005	5'	1/12
J04006	6'	1/12