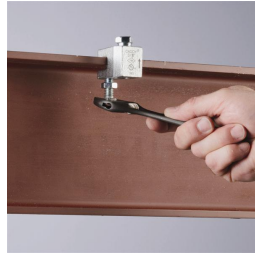
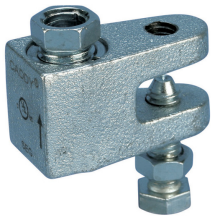
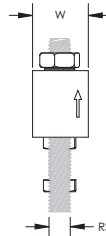
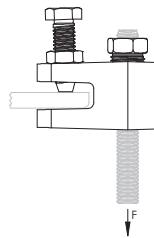
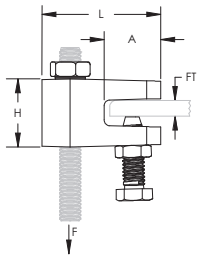


CADDY ROD LOCK Beam Clamp – CRLB37EG



- Prefabricated assemblies easily lift and lock into place, helping to save time and money
- Easy "push-to-install" design allows installers to simply push the threaded rod through the mounting hole, instantly holding it in position
- Lock nut can be finger tightened, locking the rod in place
- Works with slightly damaged threads and minor burrs on the threaded rod
- Conforms with Federal Specification WW-H-171 (Type 23), Manufacturers Standardization Society ANSI®/MSS-SP-58 (Type 19 and 23)



Part Number	CRLB37EG
Material	Cast Iron
Finish	Electrogalvanized
Rod Size (RS)	3/8"
Flange Thickness (FT)	1/8" – 3/8"
Height (H)	1 3/16"
Length (L)	2.06"
Width (W)	1"
A	0.98"
Static Load 1 (F1)	250 lb
Static Load 2 (F2)	500 lb
Pipe Size	4" Max
Certifications	cULus FM
Standard Packaging Quantity	25 pc
UPC	78285664943
EAN-13	8711893059823

Static Load 1 represents 1/8" to 3/16" (3 mm to 5 mm) flange thickness. Static Load 2 represents 1/4" to 3/8" (6 mm to 10 mm) flange thickness.

For use on plain and electro zinc plated hardware only.

Recognizing that torque wrenches are generally not used or available on many job sites, the setscrew should be tightened so it contacts the I-beam and then an additional 1/2 turn added.



ANSI is a registered trademark of American National Standards Institute. FM is a registered certification mark of FM Approvals LLC, LTD. UL, UR, cUL, cUR, cULus and cURus are registered certification marks of UL LLC.

WARNING

Pentair products shall be installed and used only as indicated in Pentair's product instruction sheets and training materials. Instruction sheets are available at erico.pentair.com and from your Pentair customer service representative. Improper installation, misuse, misapplication or other failure to completely follow Pentair's instructions and warnings may cause product malfunction, property damage, serious bodily injury and death and/or void your warranty.

© 2016 Pentair. All rights reserved.

Pentair, CADDY, CADWELD, CRITEC, ERICO, ERIFLEX, ERITECH and LENTON are owned by Pentair or its global affiliates.

All other trademarks are the property of their respective owners. Pentair reserves the right to change specifications without prior notice.

