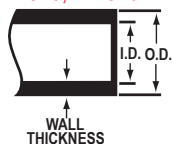


# CPVC CTS FITTINGS & VALVES

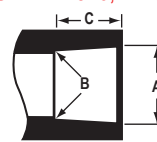


CPVC 41, SDR 11 PIPE DIMENSIONS (CTS) ASTM D 2846, D 2846M



Nominal Pipe Size In.	Mean Outside Diameter In.	O. D. Tolerance In.	Minimum Wall Thickness In.
1/2	0.625	± 0.003	0.068
3/4	0.875	± 0.003	0.080
1	1.125	± 0.003	0.102
1-1/4	1.375	± 0.003	0.125
1-1/2	1.625	± 0.004	0.148
2	2.125	± 0.004	0.193

CPVC 41, SDR 11 SOCKET DIMENSIONS (CTS) ASTM D 2846, D 2846M



Nominal Size In.	Diameter			Socket Length Minimum C
	Entrance A	Bottom B	Tolerance In.	
1/2	0.633	0.619	± 0.003	0.500
3/4	0.884	0.870	± 0.003	0.700
1	1.135	1.121	± 0.003	0.900
1-1/4	1.386	1.372	± 0.003	1.100
1-1/2	1.640	1.622	± 0.004	1.300
2	2.141	2.123	± 0.004	1.700

## Injection Molded Dimension References:

**G** = (LAYING LENGTH) intersection of center lines to bottom of socket/thread; 90° elbows, tees, crosses; ± 1/32 inch.

**H** = Intersection of center lines to face of fitting; 90° elbows, tees, crosses; ± 1/32 inch.

**J** = Intersection of center lines to bottom of socket/thread; 45° elbows; ± 1/32 inch.

**L** = Overall length of fittings; ± 1/16 inch.

**M** = Outside diameter of socket/thread hub; ± 1/16 inch.

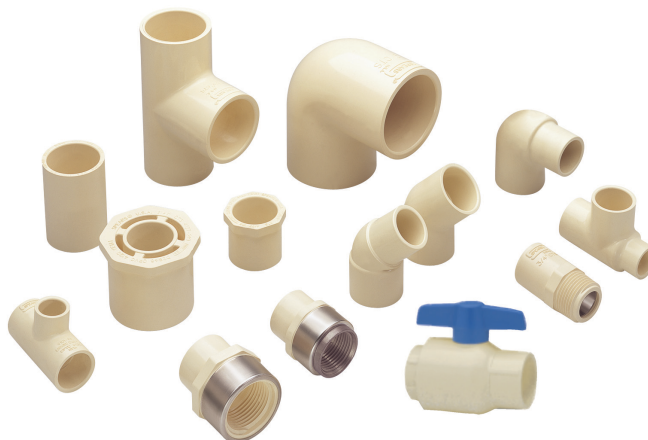
**N** = Socket bottom to socket bottom; couplings; ± 1/16 inch.

**W** = Height of cap; ± 1/16 inch.

## COPPER TUBE SIZE (CTS) CPVC PIPE

Nominal Pipe Size In.	AVG. O.D.	AVG. I.D.	MIN. Wall	MAX. W.P. P.S.I. *	LBS./FT.	Lgths./Carton
1/2	0.625	0.469	0.068	400	.090	50
3/4	0.875	0.695	0.080	400	.149	25
1	1.125	0.901	0.102	400	.240	15
1-1/4	1.375	1.105	0.125	400	.353	10
1-1/2	1.625	1.309	0.148	400	.489	6
2	2.125	1.716	0.193	400	.829	4

Standard Length - 10 Feet • All pipe is packed in boxes sold in carton quantities only.  
Pipe has UL 94 V-O rating • \* For water, non shock, at 73.4°F with solvent welded joints.



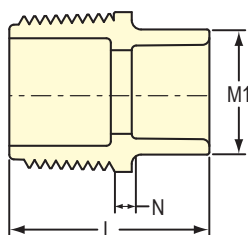
## CPVC CTS FITTINGS & VALVES



### REDUCING MALE ADAPTER

Mipt x Socket

For Cold Water Service Only

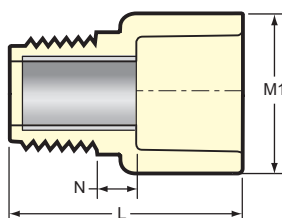


Part Number	Size	L	M1	N	Approx. Wt. (Lbs.)
4136-074	1/2x3/4	1-17/32	1-3/32	5/32	.03
4136-101	3/4x1/2	1-11/32	27/32	1/8	.02

### REINFORCED MALE ADAPTER – LEAD FREE

(Internal Stainless Steel Reinforced)

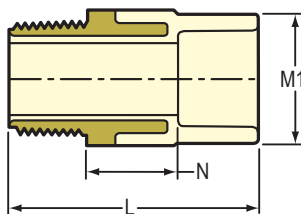
R Mipt x Socket



Part Number	Size	L	M1	N	Approx. Wt. (Lbs.)
4136-005R	1/2	1-23/32	27/32	17/32	.04
4136-007R	3/4	1-15/16	1-3/32	9/16	.06
4136-010R	1	2-3/8	1-11/32	11/16	.11

### TRANSITION MALE ADAPTER – LEAD FREE

Brass Mipt x Socket



Part Number	Size	L	M1	N	Approx. Wt. (Lbs.)
4136-005BR	1/2	2	27/32	25/32	.14
4136-007BR	3/4	2-1/4	1-3/16	27/32	.21
4136-010BR	1	2-11/16	1-3/8	29/32	.38
4136-012BR	1-1/4	2-31/32	1-21/32	31/32	.61
4136-015BR	1-1/2	3-3/16	1-15/16	1-1/32	.74
4136-020BR	2	3-21/32	2-17/32	31/32	.97