

- Lead-Free Brass Design †
- Reliable Liquid-Filled Thermostat with 10-Year Warranty
- Integral Strainer Checkstops on Inlets
- Adjustable Set Point within Temperature Range
- Accurate Temperature Control to within  $\pm 3^{\circ}$  F
- Positive Shutoff of Flow in the Event of Cold Supply Line Failure or Thermostat Failure
- Easy Installation and Serviceability
- Dirt and Lime Resistant
- Factory Assembled and Tested
- Universal Mounting Capability
- Dial Thermometer
- Cabinet Features:
  - 18 Gauge Body & Door
  - Left-Hand Hinge
  - Cylinder Lock
  - Inlet/Outlet Knock-Out Holes for Mounting Flexibility
  - Stainless Steel or Baked White Enamel Finishes
  - Surface-Mounted or Recessed Style with Flange

### Valve Specifications

#### Maximum Operating Pressure

125 PSI (860 kPa)

#### Maximum Inlet Temperature

200° F (93° C)

#### Temperature Range

	Std.	90° F (32° C) to 120° F (49° C)	Set Point	110° F (43° C)
	Low	70° F (21° C) to 100° F (38° C)		80° F (27° C)
	High	110° F (43° C) to 140° F (60° C)		130° F (54° C)

#### Flow Capacities – GPM (L/Min)

Model	Min* Flow	Pressure Drop – PSI (Bar)						
		5 (.5)	10 (1.0)	15 (1.5)	20 (2.0)	30 (2.5)	45 (3.0)	60 (4.0)
S59-3130	4.0 (15)	40.0 (184.5)	58.0 (265.0)	71.0 (327.0)	83.0 (380.0)	102.0 (427.0)	126.0 (470.0)	147.0 (546.0)

\* **Recirculation system only** (See diagram on Page 2). When properly installed near the hot water source with a **continuously operating** recirculation pump, the valve will maintain set temperature with a .5 GPM (2.0 L/Min) draw from the plumbing system.

### Code Compliance and Certifications

ASSE 1017 & cUPC certified. Complies with California Lead Plumbing Law.



† Wetted surface contains less than .25% lead

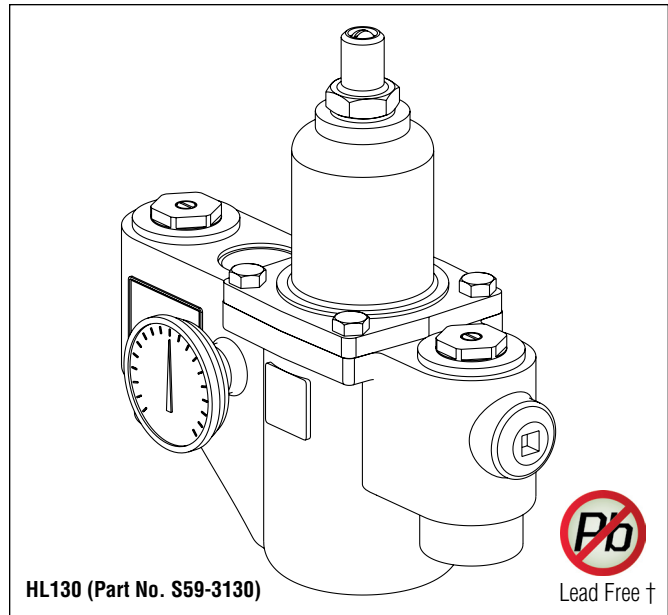
☒ **Standard product selections contained within this document are third party CERTIFIED to NSF/ANSI 372 meeting the Lead-Free content requirement. Any product configured with custom options will be COMPLIANT with NSF/ANSI 372 meeting the Lead-Free content requirement.**

Engineer's Approval \_\_\_\_\_

Page 1 of 4 8/19/2014

This information is subject to change without notice.

Bradley\_TMV\_HighLow\_HL130



### Optional Selections

#### Finish

☐ C Chrome Plated

#### Thermostat

☐ L Low Range Thermostat

☐ H High Range Thermostat

#### Bracket

☐ B Wall Mounting Bracket

#### Piped Assembly

☐ P Piped Assembly with Inlet and Outlet Shutoff

☐ N Piped Assembly with Outlet Shutoff

#### Cabinets

☐ SS Surface Mount Stainless Steel

☐ RS Recessed Stainless Steel

☐ SE Surface Mount White Enamel

☐ RE Recessed White Enamel

☐ W Plexi-glass Window in Door

### Sample Specification

Thermostatic water mixing valve shall consist of a liquid-filled thermal motor and a piston control mechanism with positive shutoff of hot water when cold water supply is lost. Valve allows a restricted cold flow in the event of loss or interruption of the hot water supply. All flow is shut off in the event of thermostat failure. Construction shall be bronze body and cap with replaceable corrosion resistant components, including stainless steel piston and liner. Valve shall come equipped with integral checkstops, thermometer, and removable strainers. Valve shall control temperature within  $\pm 3^{\circ}$  F from a low flow to a maximum flow rate for a given pressure differential per the "Flow Capacity Chart."

© 2015 Bradley

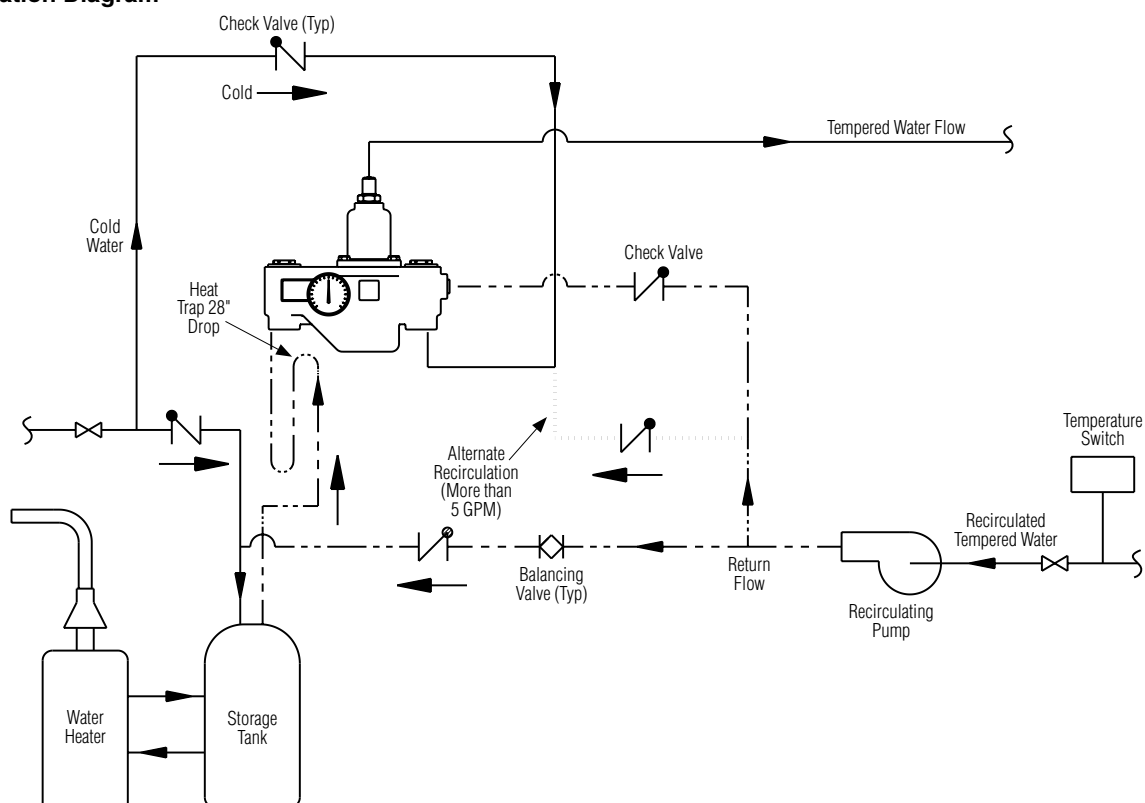
P.O. Box 309, Menomonee Falls, WI 53052-0309

800 BRADLEY (800 272 3539) +1 262 251 6000

bradleycorp.com

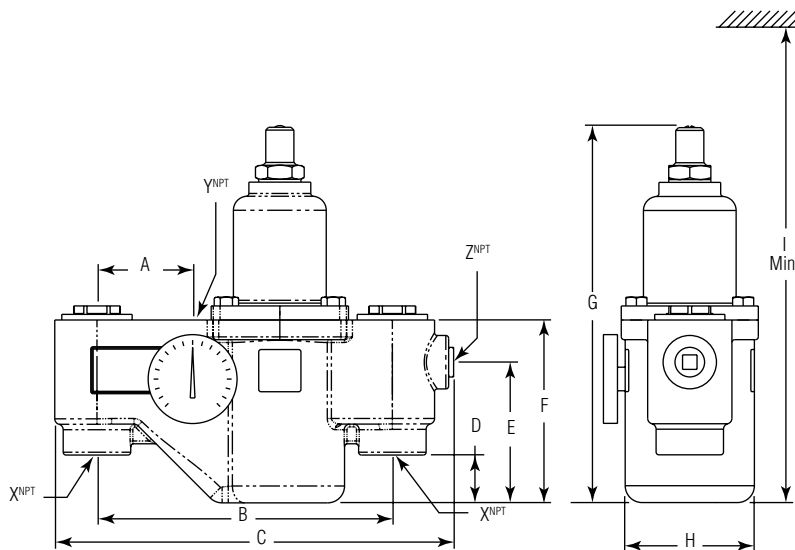
## Recirculation Diagram

(mm)

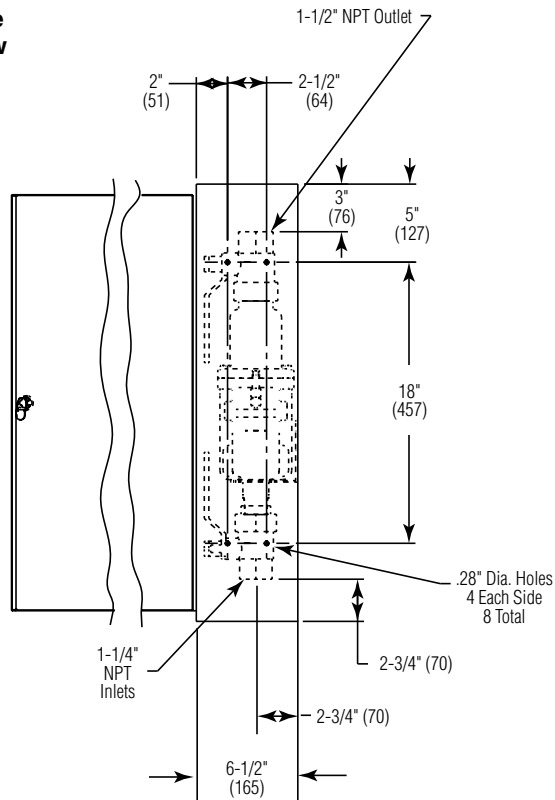


## Dimensions

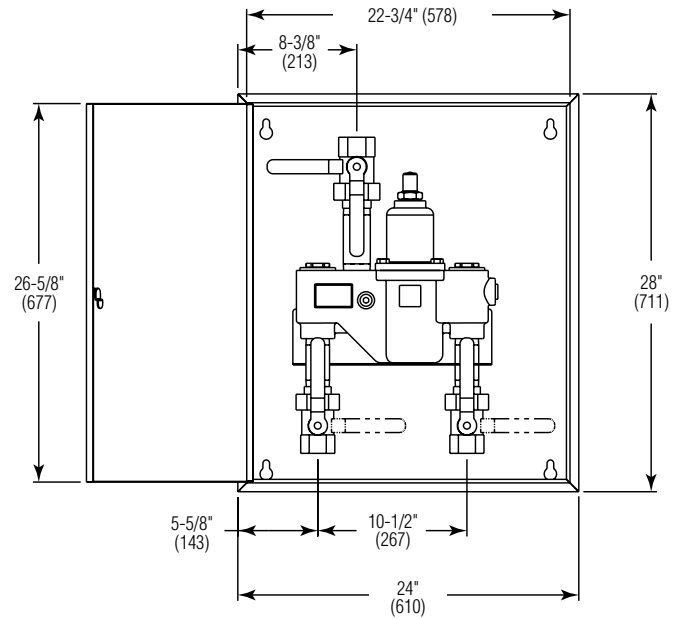
Model	A	B	C	D	E	F	G	H	I	X <sup>NPT</sup>	Y <sup>NPT</sup>	Z <sup>NPT</sup>
S59-3130	2-3/4" (70)	10-1/2" (267)	14" (356)	1-3/4" (45)	5" (127)	6-5/8" (169)	13-1/2" (343)	4-7/8" (124)	22" (559)	1-1/4"	1-1/2"	3/4"



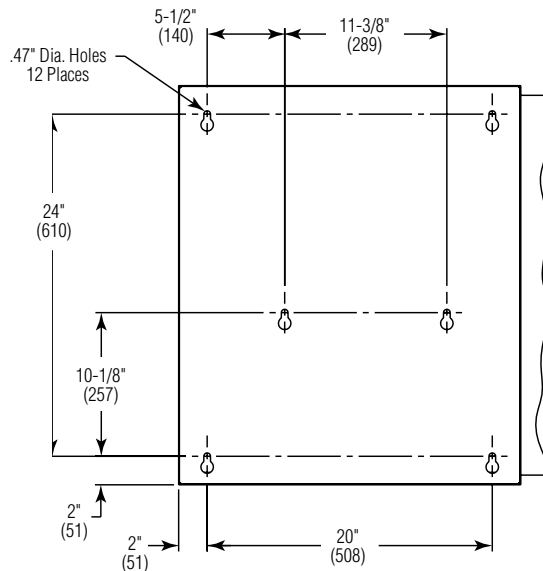
**Side View**



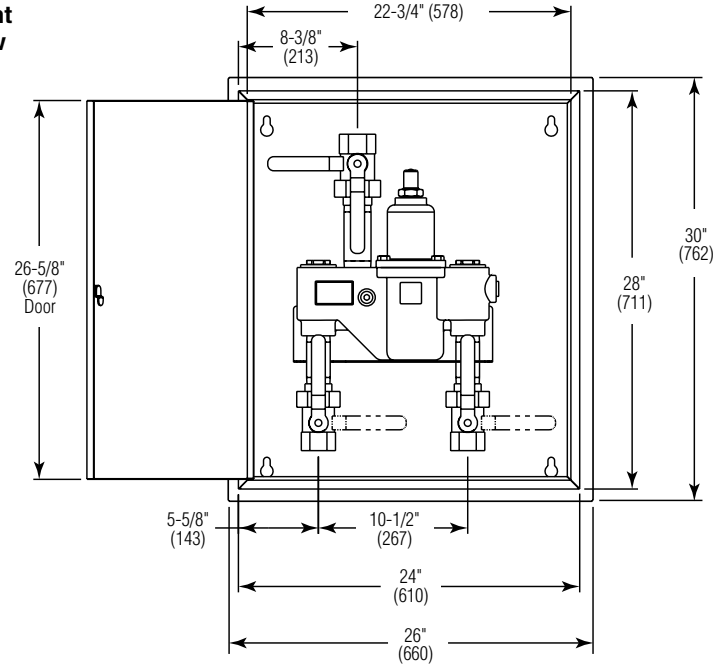
**Front View**



**Back View**



**Front View**



**Side View**

