

- Lead-Free Brass Design
- Reliable Liquid-Filled Thermostat with 10 year warranty
- Integral Strainer Checkstops on Inlets
- Adjustable Set Point within Temperature Range
- Accurate Temperature Control
- Positive Shutoff of Hot Supply When Cold Supply is Lost
- Easy Installation and Serviceability
- Dirt and Lime Resistant
- Factory Assembled and Tested
- Universal Mounting Capability
- Cabinet Features:
 - 18 Gauge Body & Door
 - Inlet/Outlet Knock-Out Holes for Mounting Flexibility
 - Left-Hand Hinge
 - Stainless Steel or Baked White Enamel Finishes
 - Cylinder Lock
 - Surface-Mounted or Recessed Style with Flange

Valve Specifications

Maximum Operating Pressure

125 PSI (860 kPa)

Maximum Inlet Temperature

200° F (93° C)

Temperature Range

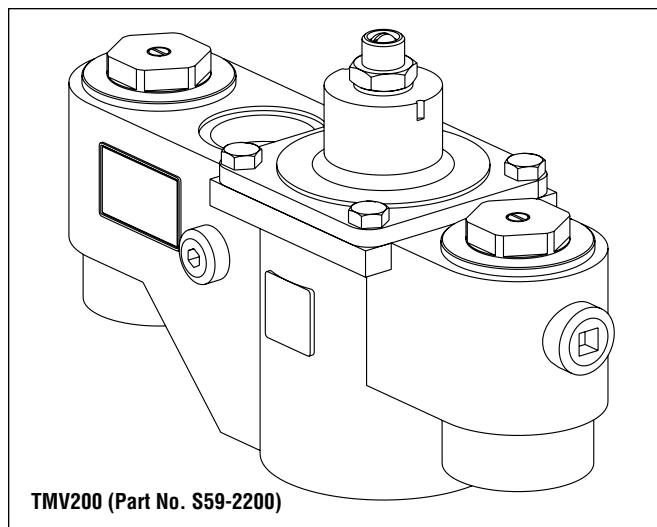
		Set Point
Std.	85° F (29° C) to 135° F (57° C)	110° F (43° C)
Low	50° F (10° C) to 100° F (38° C)	80° F (27° C)
High	100° F (38° C) to 150° F (66° C)	130° F (54° C)

Code Compliance and Certifications

ASSE 1017 & cUPC certified. Complies with California Lead Plumbing Law.



☒ **Standard product selections contained within this document are third party CERTIFIED to NSF/ANSI 372 meeting the Lead-Free content requirement. Any product configured with custom options will be COMPLIANT with NSF/ANSI 372 meeting the Lead-Free content requirement.**



Flow Capacities – GPM (L/Min)

Model	Min† Flow	Pressure Drop – PSI (Bar)						
		5 (.5)	10 (1.0)	15 (1.5)	20 (2.0)	30 (2.5)	45 (3.0)	60 (4.0)
S59-2200	20.0 (75.7)	60.0 (280.0)	91.0 (403.0)	109.0 (500.0)	127.0 (580.0)	157.0 (653.0)	192.0 (720.0)	220.0 (836.0)

†**Recirculation system only** (See diagram on Page 2). When properly installed near the hot water source with a **continuously operating** recirculation pump, the valve will maintain set temperature with a .5 GPM (2.0 L/Min) draw from the plumbing system.

Optional Selections

Finish

☐ **C** Chrome Plated

Thermostat

☐ **L** Low Range Thermostat
☐ **H** High Range Thermostat

Thermometer

☐ **T** Dial Thermometer

Bracket

☐ **B** Wall Mounting Bracket

Piped Assembly

☐ **P*** Piped Assembly with Inlet and Outlet Shutoff
☐ **N*** Piped Assembly with Outlet Shutoff

Cabinets

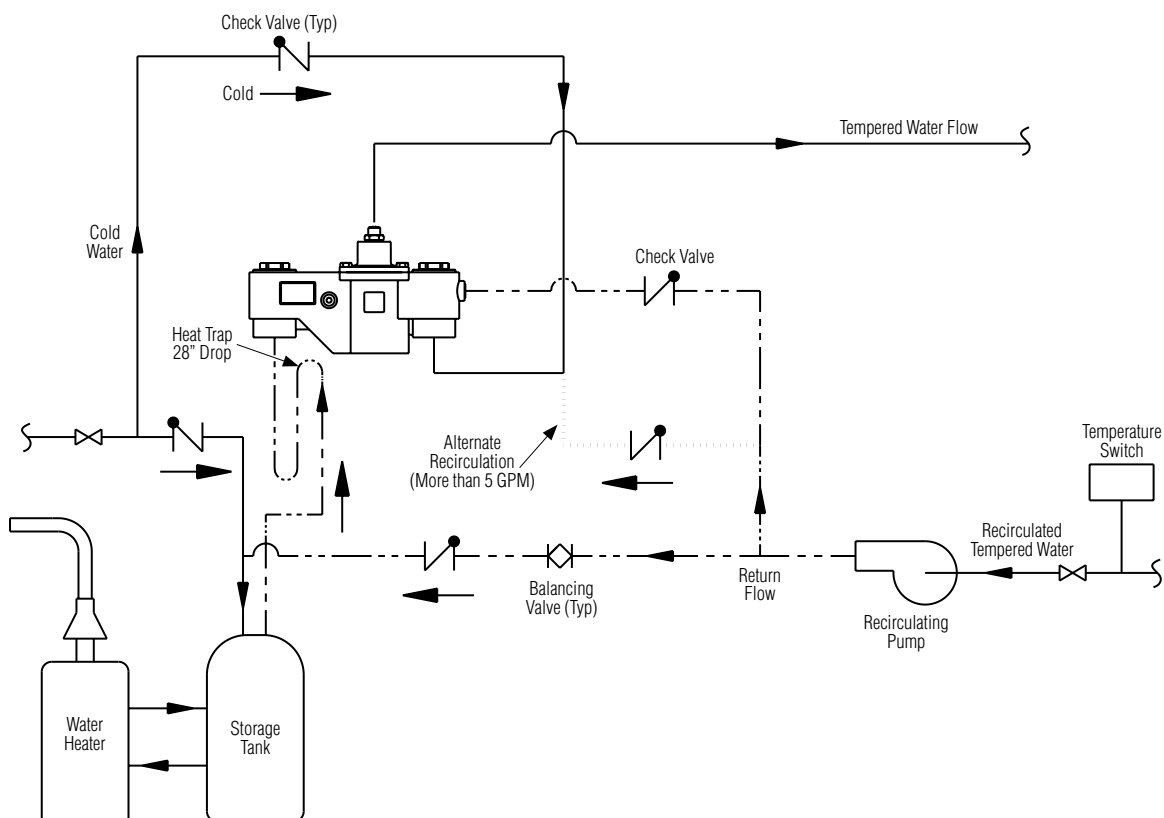
☐ **SS** Surface Mount Stainless Steel
☐ **RS** Recessed Stainless Steel
☐ **SE** Surface Mount White Enamel
☐ **RE** Recessed White Enamel
☐ **W** Plexi-glass Window in Door

*Chrome plating not available

Engineer's Approval _____

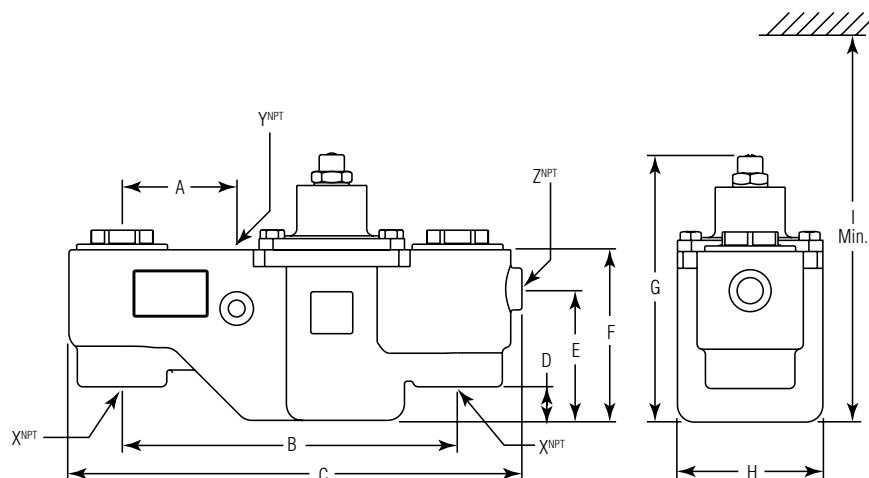
Recirculation Diagram

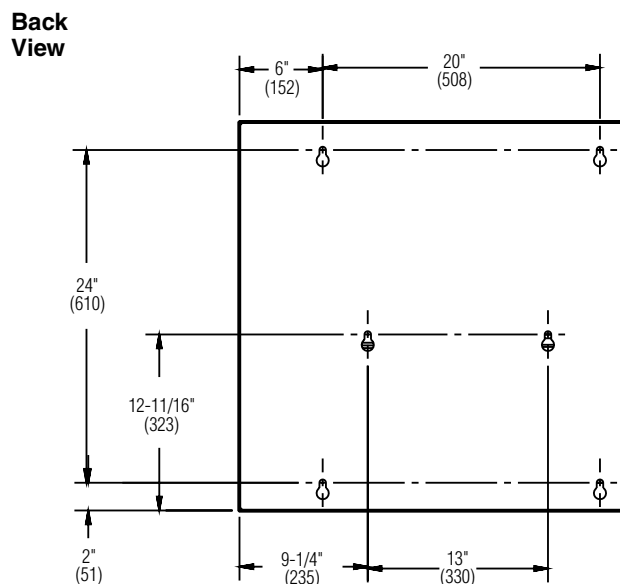
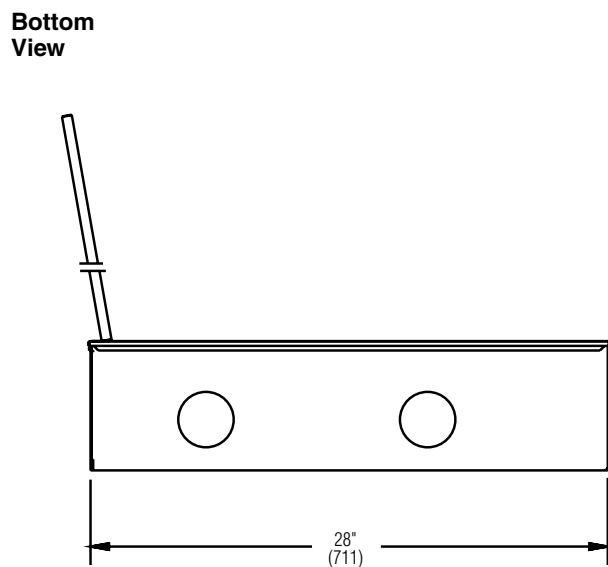
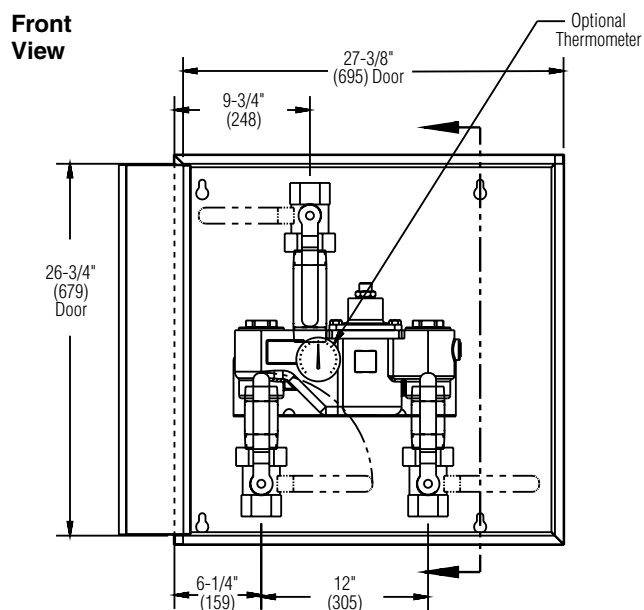
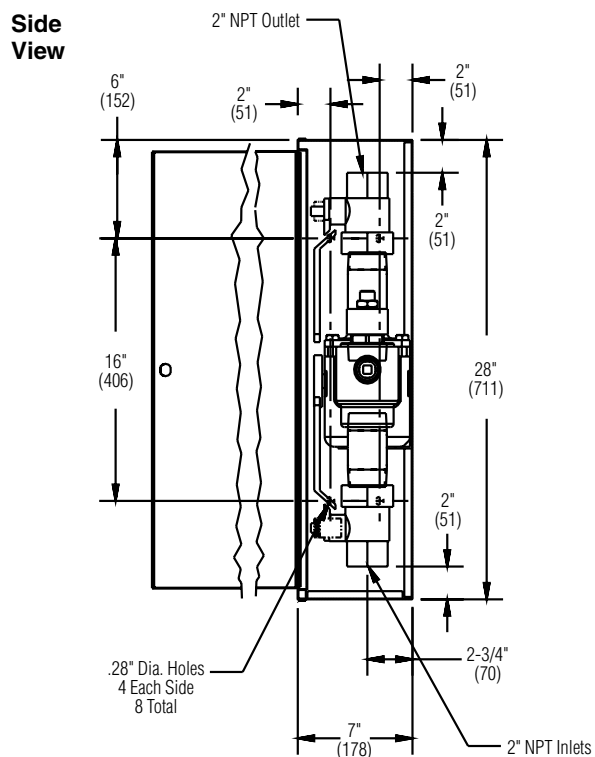
(mm)



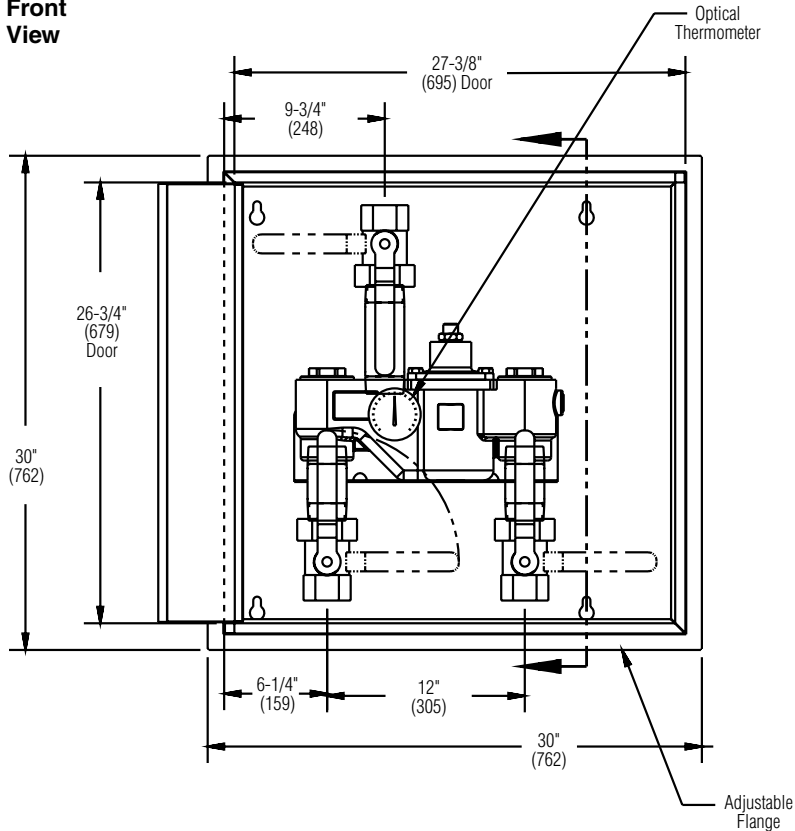
Dimensions

Model	A	B	C	D	E	F	G	H	I	X ^{NPT}	Y ^{NPT}	Z ^{NPT}
S59-2200	3-1/2" (89)	12" (305)	16-1/4" (411)	1-1/2" (38)	4-3/4" (119)	6-1/8" (155)	9-1/2" (241)	5-1/4" (132)	16" (406)	2"	2"	3/4"

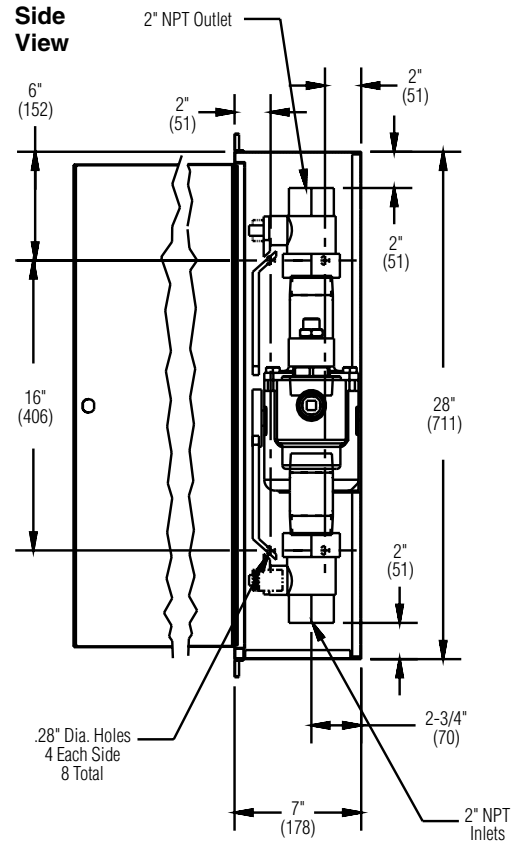




Front View



Side View



Bottom View

