

- Lead-Free Brass Design †
- Reliable Liquid-Filled Thermostat with 10-Year Warranty
- Integral Strainer Checkstops on Inlets
- Adjustable Set Point within Temperature Range
- Accurate Temperature Control
- Positive Shutoff of Hot Supply When Cold Supply is Lost
- Easy Installation and Serviceability
- Dirt and Lime Resistant
- Factory Assembled and Tested
- Universal Mounting Capability
- Cabinet Features:
 - 18 Gauge Body & Door
 - Inlet/Outlet Knock-Out Holes for Mounting Flexibility
 - Left-Hand Hinge
 - Stainless Steel or Baked White Enamel Finishes
 - Cylinder Lock
 - Surface-Mounted or Recessed Style with Flange

Valve Specifications

Maximum Operating Pressure

125 PSI (860 kPa)

Maximum Inlet Temperature

200° F (93° C)

Temperature Range

Std. 85° F (29° C) to 135° F (57° C)
Low 50° F (10° C) to 100° F (38° C)
High 100° F (38° C) to 150° F (66° C)

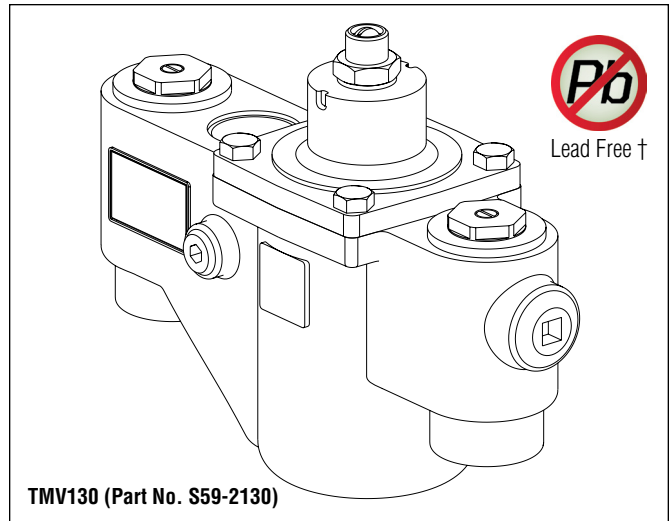
Set Point

110° F (43° C)
 80° F (27° C)
 130° F (54° C)

† Wetted surface contains less than .25% lead



☒ *Standard product selections contained within this document are third party CERTIFIED to NSF/ANSI 372 meeting the Lead-Free content requirement. Any product configured with custom options will be COMPLIANT with NSF/ANSI 372 meeting the Lead-Free content requirement.*



Flow Capacities – GPM (L/Min)

Model	Min* Flow	Pressure Drop – PSI (Bar)						
		5 (.5)	10 (1.0)	15 (1.5)	20 (2.0)	30 (2.5)	45 (3.0)	60 (4.0)
S59-2130	13.0 (50.0)	40.0 (185.0)	58.0 (265.0)	71.0 (327.0)	83.0 (380.0)	102.0 (428.0)	126.0 (470.0)	147.0 (546.0)

*Recirculation system only (See diagram on Page 2). When properly installed near the hot water source with a **continuously operating** recirculation pump, the valve will maintain set temperature with a .5 GPM (2.0 L/Min) draw from the plumbing system.

Code Compliance and Certifications

ASSE 1017 & cUPC certified. Complies with California Lead Plumbing Law.

Optional Selections

Finish

☐ C Chrome Plated

Thermostat

☐ L Low Range Thermostat
☐ H High Range Thermostat

Thermometer

☐ T Dial Thermometer

Bracket

☐ B Wall Mounting Bracket

Piped Assembly

☐ P Piped Assembly with Inlet and Outlet Shutoff
☐ N Piped Assembly with Outlet Shutoff

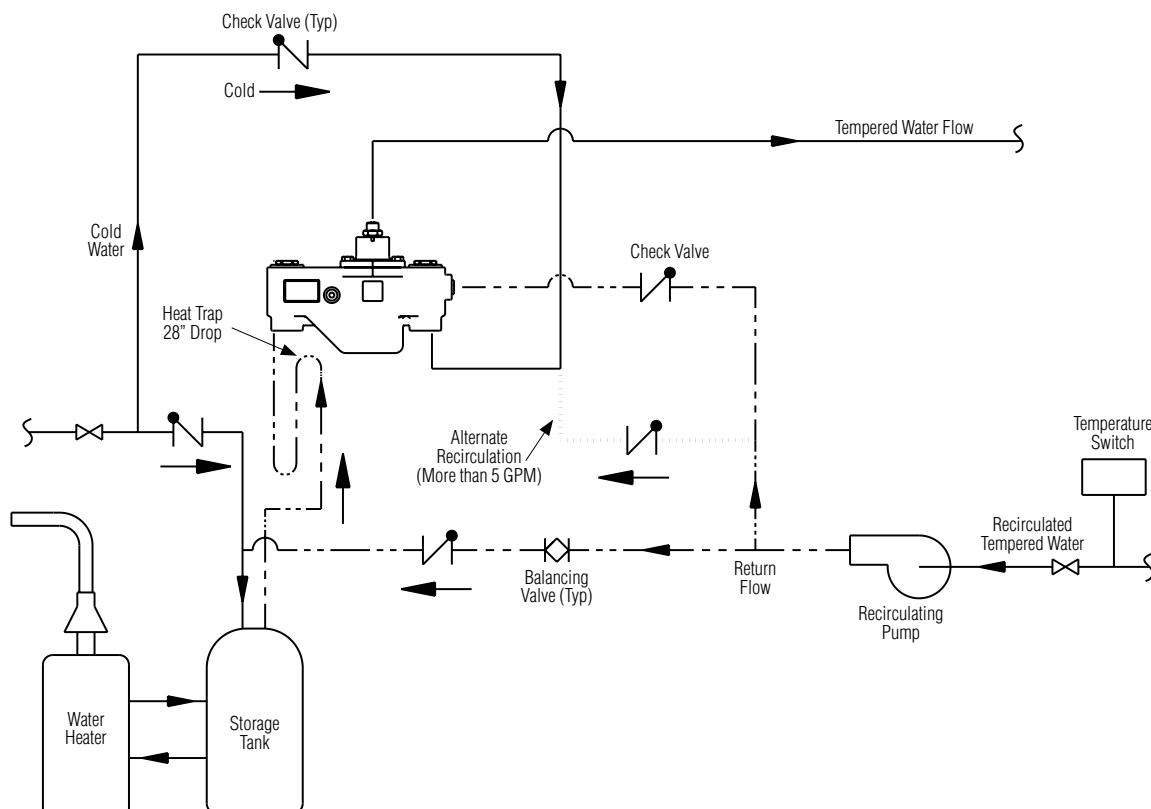
Cabinets

☐ SS Surface Mount Stainless Steel
☐ RS Recessed Stainless Steel
☐ SE Surface Mount White Enamel
☐ RE Recessed White Enamel
☐ W Plexi-glass Window in Door

Engineer's Approval _____

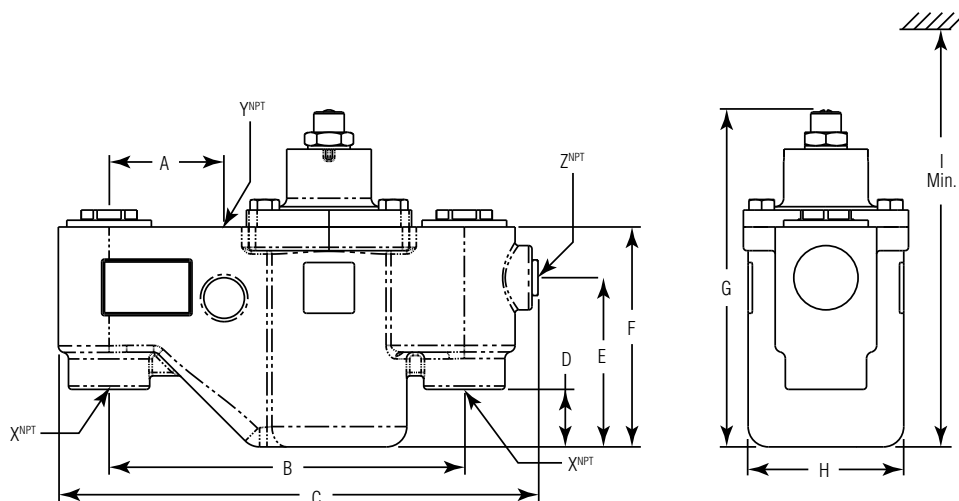
Recirculation Diagram

(mm)

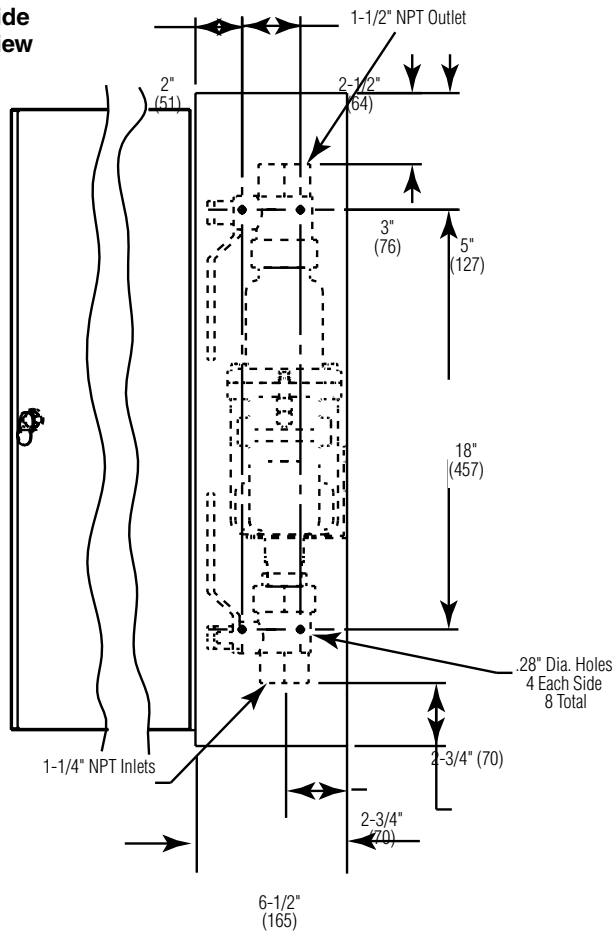


Dimensions

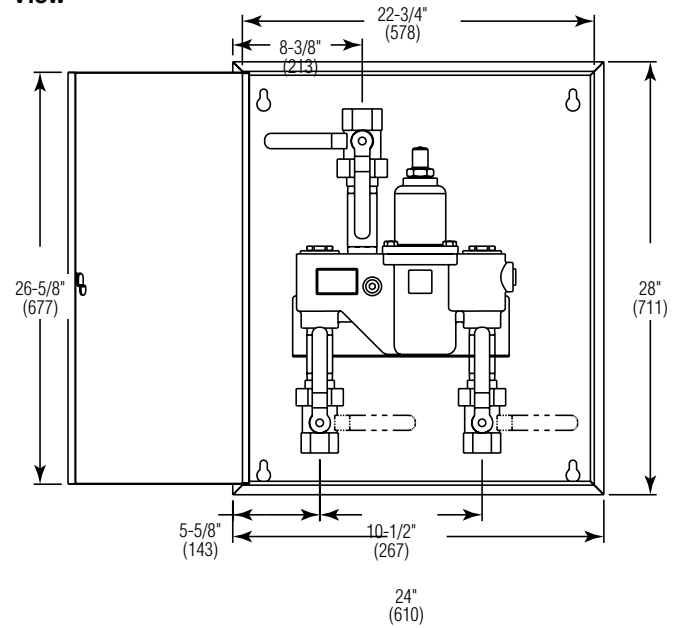
Model	A	B	C	D	E	F	G	H	I	X ^{NPT}	Y ^{NPT}	Z ^{NPT}
S59-2130	2-3/4" (70)	10-1/2" (267)	14" (356)	1-3/4" (45)	5" (127)	6-5/8" (169)	10-1/4" (260)	4-7/8" (124)	17" (432)	1-1/4"	1-1/2"	3/4"



Side View



Front View



Back View

