

- Halo™ Delivers the Most Effective Eye/Face Washdown Coverage and Spray Pattern
- Exceeds American National Standard Z358.1 Specifications
- Exceeds European EN 15154-2
- Exceeds Australia/New Zealand AS-4775 & AS/NZS 4020
- Industry's Only Self-Draining Design – The Aquaduct™
- Separate Supply and Waste Pipes – Meets CEN and Plumbing Requirements
- Ergonomic Hand Activation Eyewash Paddle – Easy to Reach from Any Direction
- Barrier Free
- Fully-Assembled and Factory-Tested Eyewash or Eye/Face Wash with Hinged Dust Covers
- Yellow Transparent Plastic and Stainless Steel Bowl Covers Available
- Universal Identification Sign and Inspection Tag Included
- Classified by Underwriters Laboratories Inc. to ANSI Z358.1.
- Certified by DVGW to EN 15154-2
- Listed by Intertek to EN 15154-2
- Certified by IAPMO OCEANA to AS4775 and AS/NZS 4020
- Halo is Covered by One or More of the Following Patents: D662,220; D662,219; D685,920. Other Patents Pending.

Specifications

Standard Eyewash or Eye/Face Wash Units save space and fit easily into any work environment. Halo eyewash or eye/face wash, operated by an ergonomic, highly visible push handle, provides effective wash down coverage and spray pattern. Integral strainer reduces debris in the water and also prevents clogging.



This plumbing fixture is not intended to dispense water for human consumption through drinking or for preparation of food or beverages.

Pipe and Fittings

Piping to ½" NPT (BSPP) water supply inlet on unit. Piping to 1¼" NPT drain outlet for eyewash.

1¼" piping assembly manufactured of one of the following materials:

- Galvanized steel with BradTect® safety yellow coating
- Type 304 corrosion resistant stainless steel
- Type 316 corrosion-resistant stainless steel
- Chrome plated red brass.

Ball Valve

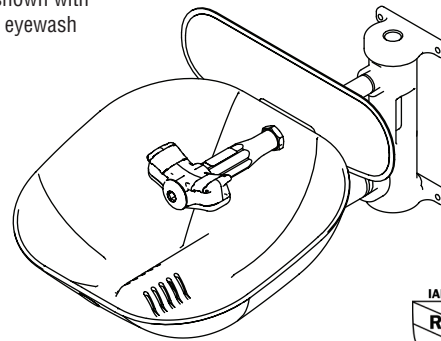
½" stay-open eye and eye/face wash valve manufactured of the following materials and supplied with either type 304 or 316 stainless steel pull rod and handle:

- Chrome-plated brass
- Type 316 stainless steel
- Self-closing chrome-plated brass (self closing eyewash valve may not meet local requirements for eyewash activation).

Eyewash

The Halo eyewash system offers a high performance rinsing platform that provides rapid relief to an individual's eyes that have been injured by chemicals or particulate. The eyewash includes an integral 5.1 GPM (19.2 L) flow control, providing water at a safe velocity while maintaining its effectiveness (exceeds minimum water flow of 0.4 GPM (1.5 L) at 30 PSI (2.0 bar)). Eyewash is protected by flip open dust covers that open when product is activated or by a full bowl dust cover that activates the unit when it is opened. Safe, steady water flow under varying water supply conditions from 30–90 PSI (2.0–6.1 bar) is assured by integral flow control in the sprayhead assembly.

Model S19224
shown with
eyewash



Eye/Face Wash

The Halo eye/face wash system offers a high performance rinsing platform that provides rapid relief to an individual's eyes and face that have been injured by chemicals or particulate. This system provides the most complete face wash available in the market. The eye/face wash includes an integral 5.1 GPM (19.2 L) flow control, providing water at a safe velocity while maintaining its effectiveness (exceeds minimum water flow of 3.0 GPM (11.4 L) at 30 PSI (2.0 bar)). Eye/face wash is protected by flip open dust covers that open when product is activated or by a full bowl dust cover that activates the unit when it is opened. Safe, steady water flow under varying water supply conditions from 30–90 PSI (2.0–6.1 bar) is assured by integral flow control in the sprayhead assembly. Sprayheads are made from an impact resistant ABS plastic or from durable 304/316 stainless steel with electro-polished finish. Bowl and Dust Cover Bowl is constructed of yellow impact-resistant plastic, Type 304 corrosion-resistant stainless steel or Type 316 corrosion-resistant stainless steel. Optional dust cover is constructed of transparent yellow impact-resistant plastic, Type 304 corrosion-resistant stainless steel or Type 316 corrosion-resistant stainless steel.

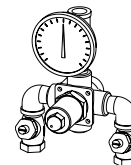
Activation

Type 304 stainless steel push handle with optional aluminum or type 304 stainless steel foot pedal. Type 316 stainless steel push handle with optional Type 316 stainless steel foot pedal.

Recommended Option:

Navigator S19-2000 EFX8
Emergency Thermostatic Mixing Valve

NAVIGATOR



Satisfies ANSI Z358.1
tepid water requirements.

Halo
EYE/FACEWASH

Drench Hose

Perforated sprayhead with protective sprayhead cover is ABS plastic and provides soft spray for cleansing eyes and face. Chrome-plated brass valve with extended handle stays open once handle is squeezed. 8' (2438mm) yellow reinforced thermoplastic hose has 3/4" NPT male thread. Burst strength is 450 PSI (31 bar). Attachment Kit includes 1/2" NPT supply, fittings and hanger for attaching hose to eyewashes. The sprayhead contains an antimicrobial agent to protect the sprayhead.

Backflow Prevention

Series N9 dual-check backflow preventer has a chrome-nickel plated brass body and includes atmospheric vent for continuous pressure applications. The check valve comes with 3/4" female dual NPT female inlet and outlet connections. It can sustain a maximum pressure of 125 PSI (8.6 bars). The check valve is certified to CSA B64.8.

Series 9D dual-check backflow preventer with intermediate atmospheric vent can be used under continuous pressure. The primary check valve uses a rubber disc seating adjacent to a mating rubber part to ensure tight closing. A second check valve employs a rubber disc-to-metal seating.

Wall Bracket

Heavy-gauge sand cast aluminum protected with BradText safety yellow coating. Includes three clearance holes for mounting bracket onto wall (mounting hardware not included).

Waste

1 1/4" drain fitting and tailpiece furnished.



Drench hose, backflow prevention and mixing valves are not certified to Australia AS4775 or European EN 15154-2.

Halo Pre-Configured Models

Halo Model Number	Description	UL certified to ANSI/ISEA	Intertek certified to EN standards
Eyewashes			
<input type="checkbox"/> S19224EW	Halo Eyewash, plastic bowl	X	X
<input type="checkbox"/> S19224PT	Halo Eyewash, plastic bowl, p-trap	X	X
<input type="checkbox"/> S19224B	Halo Eyewash, stainless steel bowl	X	X
<input type="checkbox"/> S19224BPT	Halo Eyewash, stainless steel bowl, p-trap	X	X
Eyewashes with Dust Cover			
<input type="checkbox"/> S19224PDC	Halo Eyewash, plastic bowl w/ dust cover	X	X
<input type="checkbox"/> S19224DC	Halo Eyewash, stainless steel bowl & hinged dust cover	X	X
<input type="checkbox"/> S19224DCPT	Halo Eyewash, stainless steel bowl & hinged dust cover, p-trap	X	X
Eye-Face Washes			
<input type="checkbox"/> S19224FW	Halo Eye/face wash, plastic bowl	X	X
<input type="checkbox"/> S19224FWPT	Halo Eye/face wash, plastic bowl, p-trap	X	X
<input type="checkbox"/> S19224T	Halo Eye/face wash, stainless steel bowl	X	X
<input type="checkbox"/> S19224P	Halo Eye/face wash, stainless steel bowl w/ hose spray, tailpiece	X	X
<input type="checkbox"/> S19224TPT	Halo Eye/face wash, stainless steel bowl, p-trap	X	X
<input type="checkbox"/> S19224Y	Halo Eye/face wash, stainless steel bowl, hand/foot operated, tailpiece	X	X
Eye-Face Washes with Dust Covers			
<input type="checkbox"/> S19224PDCFW	Halo Eye/face wash, plastic bowl w/ dust cover	X	X
<input type="checkbox"/> S19224DCFW	Halo Eye/face wash, stainless steel bowl & hinged dust cover	X	X
<input type="checkbox"/> S19224DCRPT	Halo Eye/face wash, stainless steel bowl & hinged dust cover, p-trap	X	X
All Stainless Steel Eye/Face Wash			
<input type="checkbox"/> S19224SC	Halo stainless steel eye/face wash, bowl and cover	X	X
<input type="checkbox"/> S19224SS	Halo stainless steel eye/face wash and bowl	X	X



Models with BSPP threading available. For BSPP threading, add a Z to end of existing part number. For example, S19224EW will be S19224EWZ.

Halo Pre-Configured Models

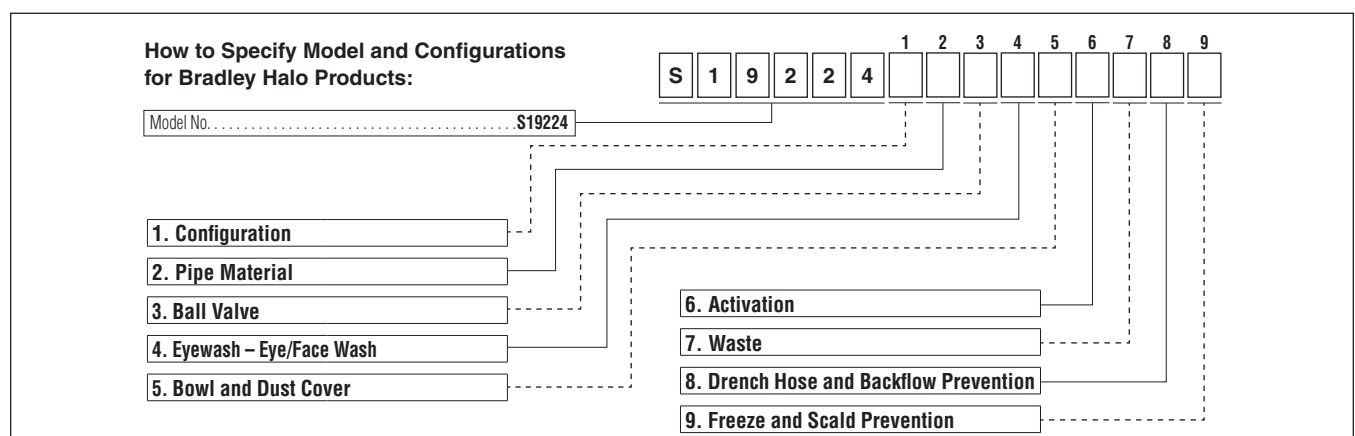
☒ All models with DIN DVGW, AS4775 & AS/NZS 4020 Certification include stainless steel pipe material with BSPP threading.

Halo Model Number	Description	IAPMO Oceana certified to AS4775 & AS4020	DIN-DVGW certified to DIN EN 15154-2
Eyewashes			
<input type="checkbox"/> S19224EWZS	Halo Eyewash, plastic bowl	X	X
<input type="checkbox"/> S19224PTZS	Halo Eyewash, plastic bowl, p-trap		X
<input type="checkbox"/> S19224BZS	Halo Eyewash, stainless steel bowl	X	X
<input type="checkbox"/> S19224BPTZS	Halo Eyewash, stainless steel bowl, p-trap		X
Eyewashes with Dust Cover			
<input type="checkbox"/> S19224PDCZS	Halo Eyewash, plastic bowl w/ dust cover	X	X
<input type="checkbox"/> S19224DCZS	Halo Eyewash, stainless steel bowl & hinged dust cover	X	X
<input type="checkbox"/> S19224DCPTZS	Halo Eyewash, stainless steel bowl & hinged dust cover, p-trap		X
Eye-Face Washes			
<input type="checkbox"/> S19224FWZS	Halo Eye/face wash, plastic bowl	X	X
<input type="checkbox"/> S19224FWPTZS	Halo Eye/face wash, plastic bowl, p-trap		X
<input type="checkbox"/> S19224TZS	Halo Eye/face wash, stainless steel bowl	X	X
<input type="checkbox"/> S19224TPTZS	Halo Eye/face wash, stainless steel bowl, p-trap		X
<input type="checkbox"/> S19224YZS	Halo Eye/face wash, stainless steel bowl, hand/foot operated, tailpiece	X	X
Eye-Face Washes with Dust Covers			
<input type="checkbox"/> S19224PDCFWZS	Halo Eye/face wash, plastic bowl w/ dust cover	X	X
<input type="checkbox"/> S19224DCFWZS	Halo Eye/face wash, stainless steel bowl & hinged dust cover	X	X
<input type="checkbox"/> S19224DCRPTZS	Halo Eye/face wash, stainless steel bowl & hinged dust cover, p-trap		X
All Stainless Steel Eye/Face Wash			
<input type="checkbox"/> S19224SCZ	Halo stainless steel eye/face wash, bowl and cover	X	X
<input type="checkbox"/> S19224SSZ	Halo stainless steel eye/face wash and bowl	X	X

Halo Configurator

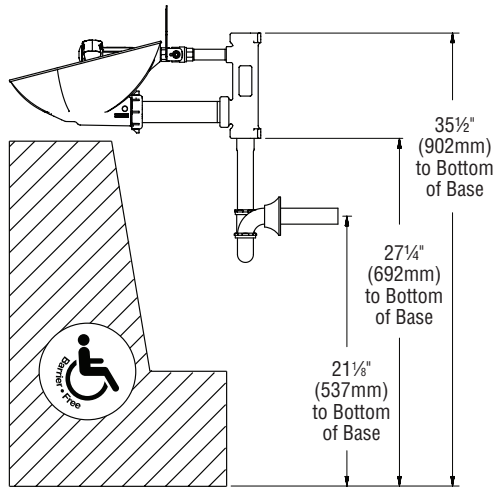
Standard Selections (Must select one from each category)		Activation	
Configuration <input type="checkbox"/> 0 Standard Wall Mount		<input type="checkbox"/> A 304 SS Handle <input type="checkbox"/> B 316 SS Handle <input type="checkbox"/> D 304 SS Handle with Stainless Steel Foot Pedal*	
Pipe Material <input type="checkbox"/> A NPT, Yellow BradText Galvanized Steel <input type="checkbox"/> B NPT, All 304 Stainless Steel <input type="checkbox"/> C NPT, All 316 Stainless Steel <input type="checkbox"/> D NPT, Chrome-Plated <input type="checkbox"/> F BSPP, Yellow BradText Galvanized Steel ‡ <input type="checkbox"/> G BSPP, All 304 Stainless Steel ‡ <input type="checkbox"/> J BSPP, Chrome-Plated ‡		Waste <input type="checkbox"/> A Tailpiece <input type="checkbox"/> D P-trap <input type="checkbox"/> 0 No Waste	
Ball Valve <input type="checkbox"/> 1 Stay-Open Eyewash, Chrome-Plated brass <input type="checkbox"/> 2 Stay-Open Eyewash, 316 SS		Drench Hose and Backflow Prevention <input type="checkbox"/> A Drench Hose Kit with Vacuum Breaker <input type="checkbox"/> B Drench Hose Kit with N9 Backflow Preventer <input type="checkbox"/> C Drench Hose Kit with 9D Backflow Preventer <input type="checkbox"/> D Drench Hose Kit without Backflow Preventer <input type="checkbox"/> 0 No Drench Hose and No Backflow Prevention	
Eyewash – Eye/Face Wash <input type="checkbox"/> A Halo Eyewash <input type="checkbox"/> B Halo Eye/Face Wash <input type="checkbox"/> D Halo Eyewash, 304 SS Yoke <input type="checkbox"/> E Halo Eye/Face Wash, 304 SS Yoke <input type="checkbox"/> F 304 SS Halo Eye/Face Wash, 304 SS Yoke <input type="checkbox"/> G Halo Eyewash, 316 SS Yoke <input type="checkbox"/> H Halo Eye/Face Wash, 316 SS Yoke <input type="checkbox"/> J 316 SS Halo Eye/Face Wash, 316 SS Yoke		Freeze and Scald Protection <input type="checkbox"/> N Anti-Freeze Valve <input type="checkbox"/> P Anti-Scald Valve <input type="checkbox"/> R Anti-Freeze and Anti-Scald Valves <input type="checkbox"/> 0 No Anti-Freeze Valve and No Anti-Scald Valve	
Bowl and Dust Cover <input type="checkbox"/> A Plastic Bowl, No Dust Cover <input type="checkbox"/> B Plastic Bowl, Plastic Dust Cover <input type="checkbox"/> D 304 SS, No Dust Cover <input type="checkbox"/> E 304 SS, 304 SS Dust Cover <input type="checkbox"/> F 304 SS, Plastic Dust Cover <input type="checkbox"/> G 316 SS, No Dust Cover <input type="checkbox"/> H 316 SS, 316 SS Dust Cover <input type="checkbox"/> J 316 SS, Plastic Dust Cover <input type="checkbox"/> 0 No Bowl or Dust Cover		* Not available with barrier-free configurations. ‡ Not available in the U.S.	

☒ **NPT = National Pipe Thread**
☒ **BSPP = British Standard Pipe Parallel Thread**
☒ **All selections made through the configurator are only UL certified to ANSI/ISEA Z358.1**

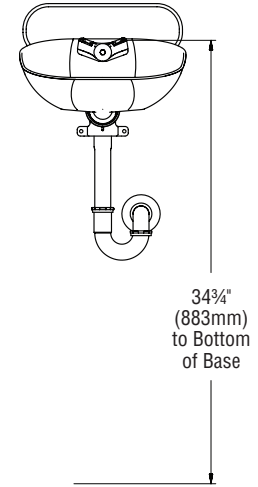
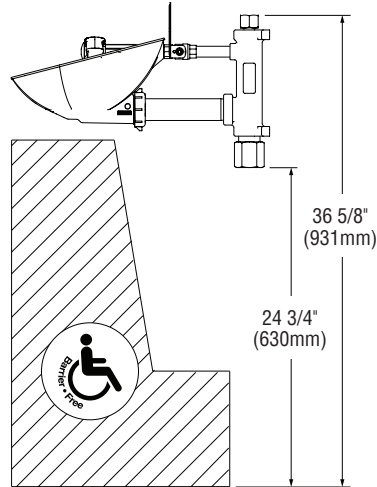


S19224 shown with Eyewash and Plastic Bowl

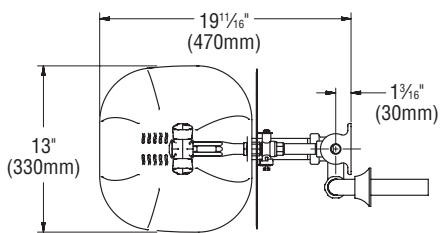
NPT Connections



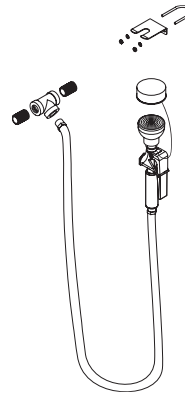
BSPP Connections



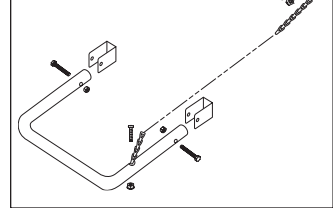
Eyewash Bowl



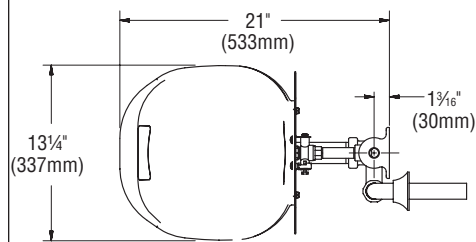
S19-430EH Drench Hose



Foot Pedal Activation



Dust Cover



All dimensions assume standard thread engagement. Variations in manufacturing allow for +/- 1/16" (3mm) per threaded joint. To find the tolerance of a dimension, add the number of thread joints across the length of the dimension and multiply it by 1/16" (3mm).