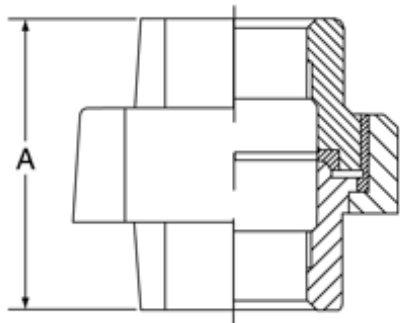


PRODUCT SPECIFICATIONS

Malleable Iron Screwed Fittings - Class 150

BLACK

GALVANIZED



UNIONS (BRASS SEAT)

Nominal Size	Dimension A	Approx. Wt. Each
<i>In. (mm)</i>	<i>In. (mm)</i>	<i>Lbs. (kg)</i>
1/8 6	1.26 32.00	0.16 0.07
1/4 8	1.46 37.08	0.23 0.10
3/8 10	1.61 40.89	0.33 0.15
1/2 15	1.73 43.94	0.41 0.19
3/4 20	1.95 49.53	0.60 0.27
1 25	2.07 52.58	0.89 0.40
1 1/4 32	2.26 57.40	1.25 0.57
1 1/2 40	2.42 61.47	1.76 0.80
2 50	2.75 69.85	2.44 1.11
2 1/2 65	3.23 82.04	3.52 1.60
3 80	3.50 88.90	4.34 1.97

MATERIAL SPECIFICATIONS

Dimensional: Fittings: ASME B16.3
Unions: ASME B16.39
Bushings/Plugs: ASME B16.14

Material: ASTM A-197

Galvanizing: ASTM A-153 (Hot Dip Galvanizing)

Threading*: ASME B1.20.1

Pressure Rating: Fittings: ASME B16.3
Unions: ASME B16.39
Bushings/Plugs: ASME B16.14

Pressure Testing: All malleable iron fittings are tested for through wall porosity using an air under water process.

Agency Approvals: All malleable iron fittings and unions are UL Listed and FM Approved.

* British Standard threading per BS 21 available upon request.



For Listings/Approval Details and Limitations, visit our website at www.anvilintl.com or contact an Anvil® Sales Representative.