



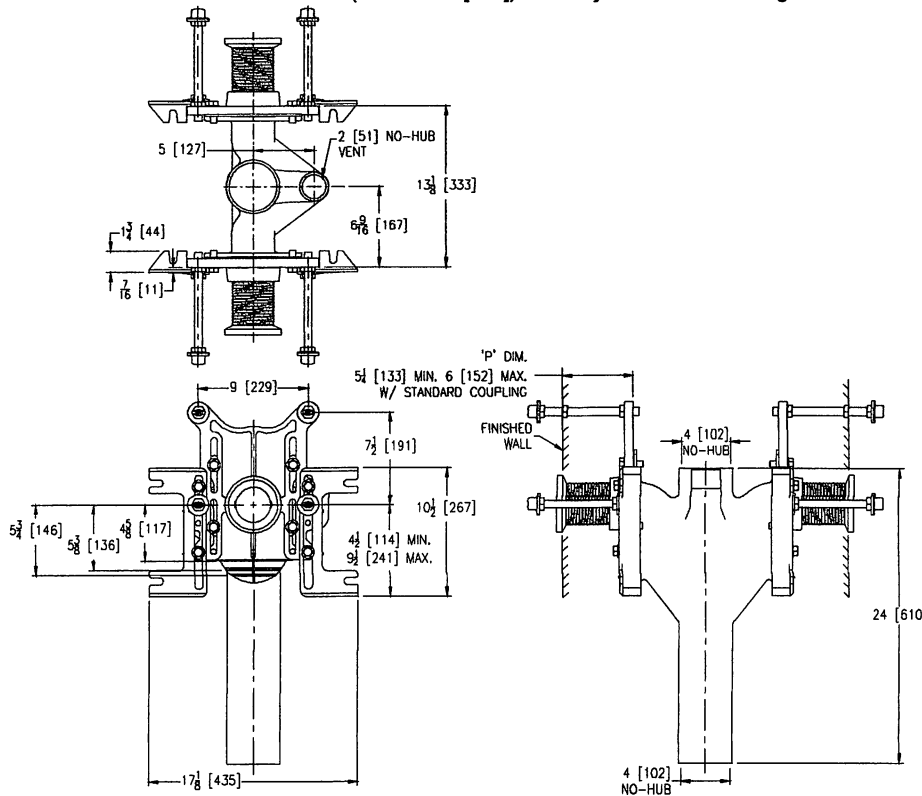
Z1202-ND4

EZCARRY™ ADJUSTABLE VERTICAL BACK-TO-BACK
HIGH PERFORMANCE SIPHON JET NO-HUB WATER
CLOSET CARRIER SYSTEM

SPECIFICATION SHEET

TAG _____

Dimensional Data (inches and [mm]) are Subject to Manufacturing Tolerances and Change Without Notice



Product Number	Approx. Wt. lbs [kg]
Z1202-ND4	98 [44]

Note:

1. Min. 'P' Dim. Obtainable=2 [51]
2. Feet bolted to floor using min. 1/2 [13] dia. anchors.
3. Auxiliary inlet available right (-JR) or left (-JL) or both sides (-JJ) when specified.

ENGINEERING SPECIFICATION: ZURN Z1202-ND4

EZCarry™ vertical siphon jet water closet carrier system with high performance waterway and 4" [102mm] no-hub connections. System includes Dura-Coated cast iron double main fitting with hydro-mechanically optimized sweep and extended 2" [51mm] vent, adjustable gasketed faceplates, universal floor mounted pre-fab slotted foot supports, fixture bolts, trim, stud protectors, bonded "Neo-Seal" gaskets, and corrosion resistant, adjustable 3" [76mm] dia. X 6" [152mm] couplings with integral test caps designed to increase flow velocity and line carry. EZCarry system complies with the requirements of ASME A112.6.1M up to a 500 lbs [227 kg] static load rating.

OPTIONS (Check/specify appropriate options)

Z1202-ND4 4 [102] No-Hub Stack, Double Inlets, 2 [51] Vent

PREFIXES

X Z D.C.C.I. System with Zurn ZZ Adjustable Coupling*
___ ZQ D.C.C.I. System with NPT Faceplate, Non-Adjustable Coupling

SUFFIXES

___ -A	Auxiliary Support Assembly (For 'P' Dim. Greater than 18 [457])	___ -G	Galvanized Cast Iron
___ -CC	Corrosion Resistant Cast Iron Coupling (2-1/4 [57] to 12 [305])	___ -JJ	Two 2 [51] Auxiliary Inlets
___ -CE	EZ-Set™ Coupling (Available 6 [152], 12 [305] or longer when specified. Minimum length=5 [127])	___ -JL	2 [51] Left-Hand Auxiliary Inlet
___ -CL	Custom Length Standard Coupling with Integral Test Cap (Specify Length 4, 8, 10, 12 [102, 203, 254, 305])	___ -JR	2 [51] Right-Hand Auxiliary Inlet
___ -CS	2-1/4 [57] Polymer Coupling with Integral Test Cap	___ -M	Auxiliary Foot Support (for 'P' Dim. 10 thru 18 [254 thru 457])
___ -F	Floor Mounted, Back Outlet Fixture Support	___ -RYK	Unistrut Pre-Fab Foot Support
		___ -VP	Vandal-Proof Trim
		___ -45	Finishing Frame for Siphon Jet System
		___ -50	Flush Valve Supply Support for Water Closets

* Regularly furnished unless otherwise specified.

Zurn Industries, LLC | Specification Drainage Operation
1801 Pittsburgh Avenue, Erie, PA U.S.A. 16502 · Ph. 855-663-9876, Fax 814-454-7929
In Canada | Zurn Industries Limited
3544 Nashua Drive, Mississauga, Ontario L4V 1L2 · Ph. 905-405-8272, Fax 905-405-1292
www.zurn.com

Rev. C
Date: 12/15/14
C.N. No. 132056
Prod. | Dwg. No. Z1202-ND4