

Style F7

Y-Strainer

Cast Bronze (ASTM B 584, C89833)

125 lb. Threaded



*The wetted surface of this product contacted by consumable water contains less than 0.25% of lead by weight.

Style E7

Y-Strainer

Cast Bronze (ASTM B 584, C89833)

125 lb. Solder Joint



*The wetted surface of this product contacted by consumable water contains less than 0.25% of lead by weight.

Cast Bronze Y-Strainer (Lead Free*)

APPLICATIONS

Steam, water, oil or gas where protection from foreign matter in a pipeline is required.

CONSTRUCTION

The Keckley Style F7 & E7 strainers are constructed from the finest bronze castings and are machined to exacting specifications.

Solder Joint Ends are in compliance with ASME B16.8 unless otherwise specified.

FEATURES

The Keckley Style F7 & E7 strainers feature a machined seat in the body and cap for proper alignment and to ensure accurate reseating when servicing is required. These strainers have a straight threaded cap and are furnished standard with a NPT blow-off connection. The gasket is a flat PTFE gasket that is compressed between the body and cap for maximum strength and durability. Keckley Style F7 & E7 strainers are furnished with a bronze blow-off plug unless otherwise specified.

SCREENS

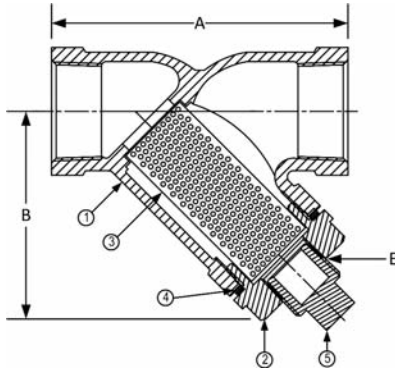
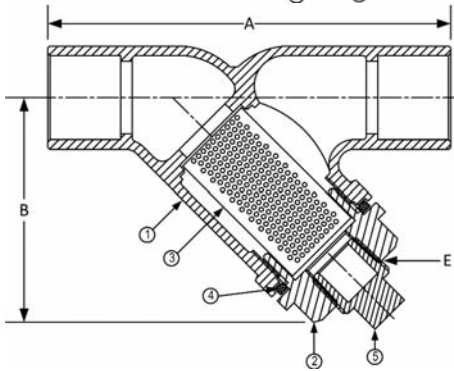
Standard screens are 20 mesh 304 stainless steel through size 2". Sizes 2-1/2", 3" and 4" are furnished with 3/64" perforated 304 stainless steel screens. All screens are spot welded for maximum strength. Different size perforations and meshes are available in stainless steel, monel, and brass to meet specific media requirements.

SELF CLEANING

Self cleaning is accomplished by opening the valve or drain plug connected to the blow-off port. **Warning:** See Maintenance Instructions on page S6 of the Strainer Information Section for additional precautions and detailed information on servicing the strainer.

WORKING PRESSURES - NON SHOCK

| NOM. RATING | MEDIA | 1/4" to 3" | 8 mm to 80 mm |
|--------------------------------|--------|-----------------|-----------------|
| 125# (THREADED & SOLDER JOINT) | STEAM | 125 PSI @ 400°F | 862 KPa @ 204°C |
| | W.O.G. | 200 PSI @ 150°F | 1379 KPa @ 66°C |

Style F7
 (Threaded)

Style E7
 (Solder Joint)


Style F7 & E7

Y-Strainer, 125 lb. Threaded & Solder Joint
Cast Bronze (ASTM B 584, C89833) Lead Free*

PARTS LIST

| ITEM | DESCRIPTION | MATERIAL |
|------|-------------|-----------------------------|
| 1 | Body | Bronze (ASTM B 584, C89833) |
| 2 | Cap | Bronze (ASTM B 584, C89833) |
| 3 | Screen | Stainless Steel (304) |
| 4 | Gasket | PTFE |
| 5 | Plug | Bronze (ASTM B 584, C89833) |

*The wetted surface of this product contacted by consumable water contains less than 0.25% of lead by weight.

STANDARD SCREENS SUPPLIED

| SIZE | | SCREEN GAGE | SCREEN PERFORATION | | | | | | |
|------------|---------|----------------|-------------------------|-----|--------------|------------|-----|--------------|-----|
| | | | FOR STEAM | | OPEN AREA | FOR LIQUID | | OPEN AREA | |
| in | mm | | in | mm | | in | mm | | |
| 1/4 to 2 | 8 to 50 | | 20 MESH STAINLESS STEEL | | | | | | 49% |
| 2-1/2 to 3 | 65 & 80 | 28 | 3/64 | 1.2 | 33% | 3/64 | 1.2 | 33% | |

Options: Other meshes, perforations, and screen materials are available.

| SIZE | | DIMENSIONS | | | | | | | | | | | | WEIGHTS | | | |
|-------|----|------------|-----|---------|-------|--------|-----|---------|-----|-------|----|-------|----|---------|------|-------|------|
| | | A | | | | B | | | | E | | | | | | | |
| | | F7 | | E7 | | F7 | | E7 | | F7 | | E7 | | F7 | | E7 | |
| in | mm | in | mm | in | mm | in | mm | in | mm | in | mm | in | mm | lbs | kgs | lbs | kgs |
| 1/4 | 8 | 2-9/16 | 65 | 2-1/16 | 53 | 1-7/8 | 48 | 1-3/8 | 35 | 1/4 | 8 | 1/8 | 6 | 0.63 | 0.29 | 0.20 | 0.09 |
| 3/8 | 10 | 2-9/16 | 65 | 3-1/8 | 80 | 1-7/8 | 48 | 1-13/16 | 46 | 1/4 | 8 | 1/4 | 8 | 0.58 | 0.26 | 0.46 | 0.21 |
| 1/2 | 15 | 2-9/16 | 65 | 3-1/8 | 80 | 1-7/8 | 48 | 1-15/16 | 49 | 1/4 | 8 | 1/4 | 8 | 0.55 | 0.25 | 0.48 | 0.22 |
| 3/4 | 20 | 3 | 77 | 4-1/8 | 105 | 2-1/4 | 57 | 2-5/16 | 59 | 3/8 | 10 | 3/8 | 10 | 0.87 | 0.39 | 0.86 | 0.39 |
| 1 | 25 | 3-3/4 | 95 | 4-15/16 | 125 | 2-7/16 | 62 | 2-5/8 | 67 | 1/2 | 15 | 1/2 | 15 | 1.38 | 0.63 | 1.25 | 0.57 |
| 1-1/4 | 32 | 4-7/16 | 113 | 5-11/16 | 145 | 3-3/8 | 86 | 3-1/4 | 83 | 1/2 | 15 | 1/2 | 15 | 2.90 | 1.32 | 2.06 | 0.93 |
| 1-1/2 | 40 | 4-7/8 | 123 | 6-5/8 | 170 | 3-9/16 | 91 | 3-11/16 | 94 | 3/4 | 20 | 3/4 | 20 | 3.27 | 1.48 | 2.93 | 1.33 |
| 2 | 50 | 5-1/4 | 133 | 8-1/4 | 210 | 4-5/16 | 110 | 4-1/2 | 114 | 1 | 25 | 1 | 25 | 4.99 | 2.26 | 5.48 | 2.49 |
| 2-1/2 | 65 | 6-15/16 | 175 | 9-3/4 | 247.5 | 5 | 127 | 5-3/8 | 137 | 1-1/4 | 32 | 1-1/4 | 32 | 9.88 | 4.48 | 10.16 | 4.61 |
| 3 | 80 | 7-7/8 | 200 | 11-3/8 | 289 | 5-5/8 | 143 | 6-1/8 | 156 | 1-1/2 | 40 | 1-1/2 | 40 | 14.20 | 6.44 | 14.30 | 6.49 |

Certified dimensional drawings are available upon request.

†This table reflects only the nearest metric equivalents.

FLOW COEFFICIENTS

| Size | C _v | Size | C _v | Size | C _v |
|------|----------------|--------|----------------|--------|----------------|
| 1/4" | 9.5 | 1" | 30 | 2-1/2" | 129.7 |
| 3/8" | 9.5 | 1-1/4" | 44.9 | 3" | 161.3 |
| 1/2" | 9.5 | 1-1/2" | 61 | | |
| 3/4" | 18.7 | 2" | 98 | | |

TOTAL SCREEN AREA

| Size | (in ²) | Size | (in ²) | Size | (in ²) |
|------|--------------------|--------|--------------------|--------|--------------------|
| 1/4" | 2.92 | 1" | 6.70 | 2-1/2" | 34.06 |
| 3/8" | 2.92 | 1-1/4" | 12.25 | 3" | 47.01 |
| 1/2" | 2.92 | 1-1/2" | 14.58 | | |
| 3/4" | 4.34 | 2" | 22.88 | | |

(Total screen area listed are for Style F7)

*See DETERMINING RATIOS on page S5 of the Strainer Information Section for calculating NET FREE AREA of the screen to inside pipe area.

PRESSURE vs. TEMPERATURE CHART

125# Threaded & Solder Joint Bronze (ASTM B 584, C89833)

