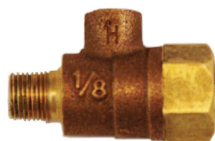


# SPECIFICATION SUBMITTAL SHEET



**Model 860XL**



**Model 860XLFT**

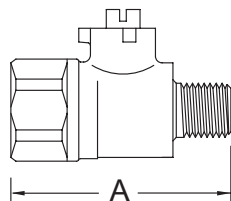
## FEATURES

Sizes: □ 1/8" □ 1/4"

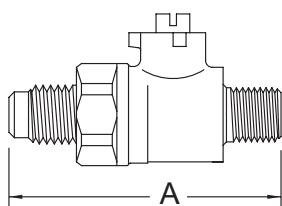
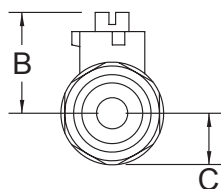
Maximum pressure  
Maximum temperature  
End connections

Flare connection (860FT)

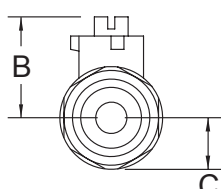
300 PSI WOG  
180°F  
Threaded ANSI  
B1.20.1  
45° Flare SAE



**MODEL 860XL**



**MODEL 860XLFT**



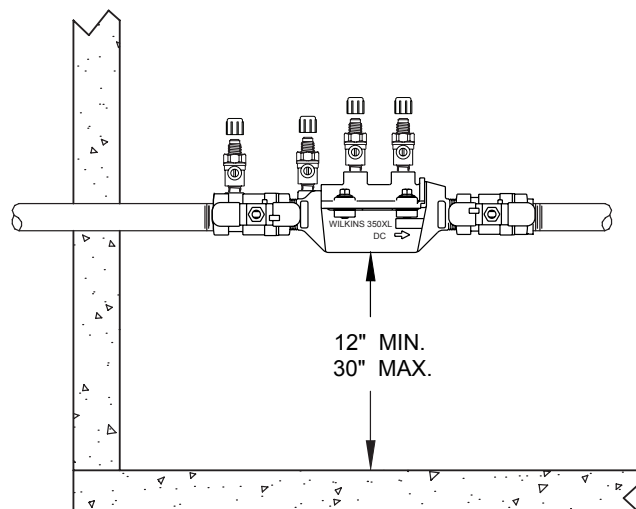
## APPLICATION

Designed for installation on backflow preventers as a test port for attaching a differential pressure gauge. Optional SAE flare fitting allows for fast and easy attachment of test kit hoses. A threaded dust cover is included with the 860FT to protect against fouling caused by insects, dirt and debris.

## MATERIALS

Main valve body	Cast Bronze ASTM B 584
Ball	Brass ASTM B 16, Chrome Plated
Seat & packing	Teflon
Flare fitting	Brass ASTM B 16

## TYPICAL INSTALLATION



DIRECTION OF FLOW ➡

**INDOOR INSTALLATION (350XL)**

## DIMENSIONS & WEIGHTS (do not include pkg.)

MODEL	SIZE	DIMENSIONS (approximate)						WEIGHT	
		A		B		C		lbs.	kg
		in	mm	in.	mm	in.	mm		
18-860XL	1/8" MNPT X 1/4" FNPT	1 5/8	41	3/4	19	3/8	10	1	0.5
14-860XL	1/4" MNPT X 1/4" FNPT	1 5/8	41	3/4	19	3/8	10	1	0.5
18-860XLFT	1/8" MNPT X 45° SAE	2	51	3/4	19	3/8	10	1	0.5
14-860XLFT	1/4" MNPT X 45° SAE	2	51	3/4	19	3/8	10	1	0.5