

SPECIFICATION SUBMITTAL SHEET



BFP-9



BFP-8F

FEATURES

Sizes: ☐ 3/4"

Maximum working water pressure 125 PSI
 Maximum working water temperature 180°F
 Thread connection Hose Thread
 ANSI B1.20.7

OPTIONS

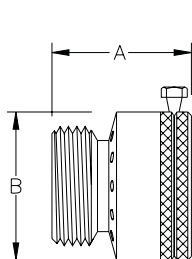
CH - with chrome finish
 - with manual drain feature for freeze protection (BFP-8F)

ACCESSORIES

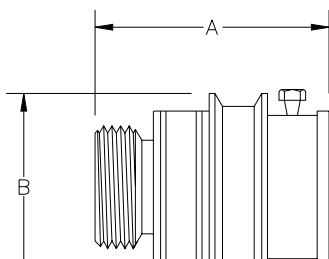
☐ Hose bibb (Model 195)

DIMENSIONS & WEIGHTS (do not include pkg.)

MODEL	DIMENSIONS (approximate)				WEIGHT	
	in.	mm	in.	mm	lbs.	kg
BFP-9	1 5/16	33	1 1/4	32	0.3	0.1
BFP-8F	1 15/16	49	1 5/8	41	0.3	0.1



BFP-9



BFP-8F

APPLICATION

Designed for installation on potable water lines such as service sinks, laundry tubs and hose bibbs to protect against backsiphonage of polluted water into the potable water supply. A break-away set screw is included to prevent unauthorized removal. Assembly shall provide protection where a potential health hazard does not exist.

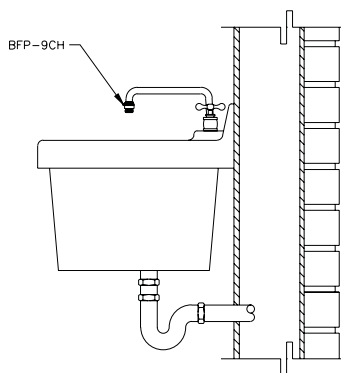
STANDARDS COMPLIANCE

- ASSE® Listed 1011
- IAPMO® Listed
- CSA® Certified

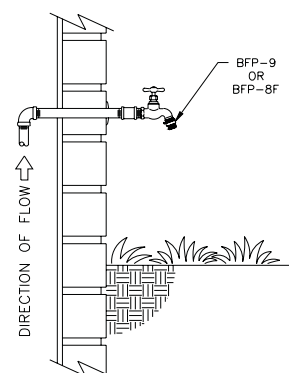
MATERIAL

Valve body Brass, ASTM B 16
 Elastomers Buna Nitrile, FDA 21, 177.2600
 Internals Stainless steel, 300 series
 Brass, ASTM B 16
 Polymers Acetal (Delrin™), NSF Listed

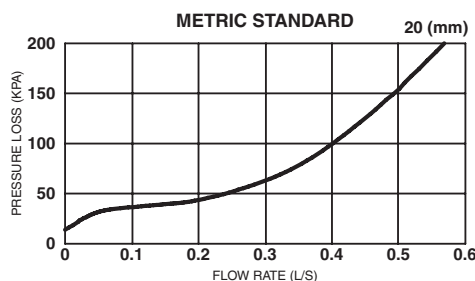
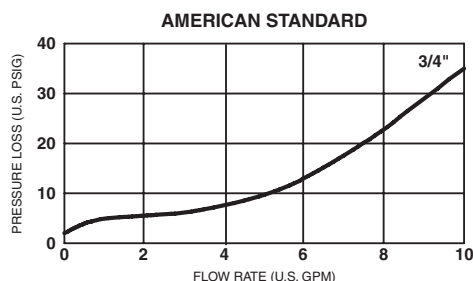
TYPICAL INSTALLATION



TYPICAL SERVICE SINK INSTALLATION



TYPICAL HOSE BIBB INSTALLATION



DOCUMENT #:
BF-BFP9

REVISION:
9/07