



# PVC WHITE SCHEDULE 40 FITTINGS UNIONS & SADDLES

## Injection Molded Dimension References:

- G** = (LAYING LENGTH) intersection of center lines to bottom of socket/thread; 90° elbows, tees, crosses;  $\pm 1/32$  inch.
- H** = Intersection of center lines to face of fitting; 90° elbows, tees, crosses;  $\pm 1/32$  inch.
- J** = Intersection of center lines to bottom of socket/thread; 45° elbows;  $\pm 1/32$  inch

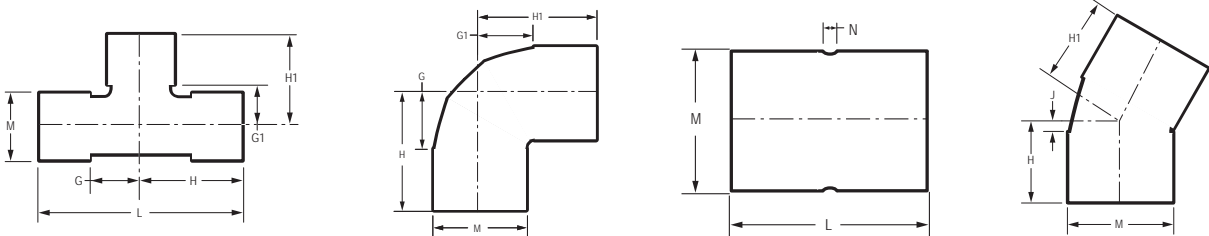
- L** = Overall length of fittings;  $\pm 1/16$  inch.
- M** = Outside diameter of socket/thread hub;  $\pm 1/16$  inch.
- N** = Socket bottom to socket bottom; couplings;  $\pm 1/16$  inch.
- W** = Height of cap;  $\pm 1/16$  inch.

## Fabricated Dimension References:

- G** = (LAYING LENGTH) intersection of center lines to bottom of socket/thread; 90° elbows, tees, crosses;  $\pm 1/4$  inch; 14" & larger  $\pm 1/2$  inch.
- H** = Intersection of center lines to face of fitting; 90° elbows, tees, crosses;  $\pm 1/4$  inch.; wyes  $\pm 1/2$  inch; 14" & larger  $\pm 1/2$  inch.
- J** = Intersection of center lines to bottom of socket/thread; 45° elbows;  $\pm 1/4$  inch; 14" & larger  $\pm 1/2$  inch.

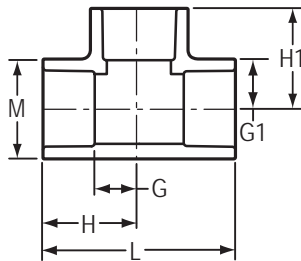
- L** = Overall length of fittings;  $\pm 1/2$  inch.; wyes  $\pm 1$  inch; 14" & larger  $\pm 1$  inch.
- M** = Outside diameter of socket/thread hub;  $\pm 1/4$  inch.
- N** = Socket bottom to socket bottom; couplings;  $\pm 1/2$  inch.
- W** = Height of cap;  $\pm 1/4$  inch.

## Typical Fabricated Dimension References



## TEE

Socket x Socket x Socket



Part Number	Size	G	G1	H	H1	L	M	Approx. Wt. (Lbs.)
401-003	3/8	3/8	3/8	1-1/8	1-1/8	2-1/4	31/32	.04
401-005	1/2	1/2	1/2	1-1/4	1-1/4	2-1/2	1-3/32	.06
401-007	3/4	9/16	9/16	1-9/16	1-9/16	3-1/8	1-5/16	.10
401-010	1	11/16	11/16	1-3/4	1-3/4	3-1/2	1-5/8	.16
401-012	1-1/4	7/8	7/8	2-1/8	2-1/8	4-1/4	2	.25
401-015	1-1/2	1-3/32	1-3/32	2-11/32	2-11/32	4-23/32	2-1/4	.36
401-020	2	1-3/8	1-3/8	2-3/4	2-3/4	5-15/32	2-3/4	.51
401-025	2-1/2	1-21/32	1-21/32	3-13/32	3-13/32	6-13/16	3-11/32	.103