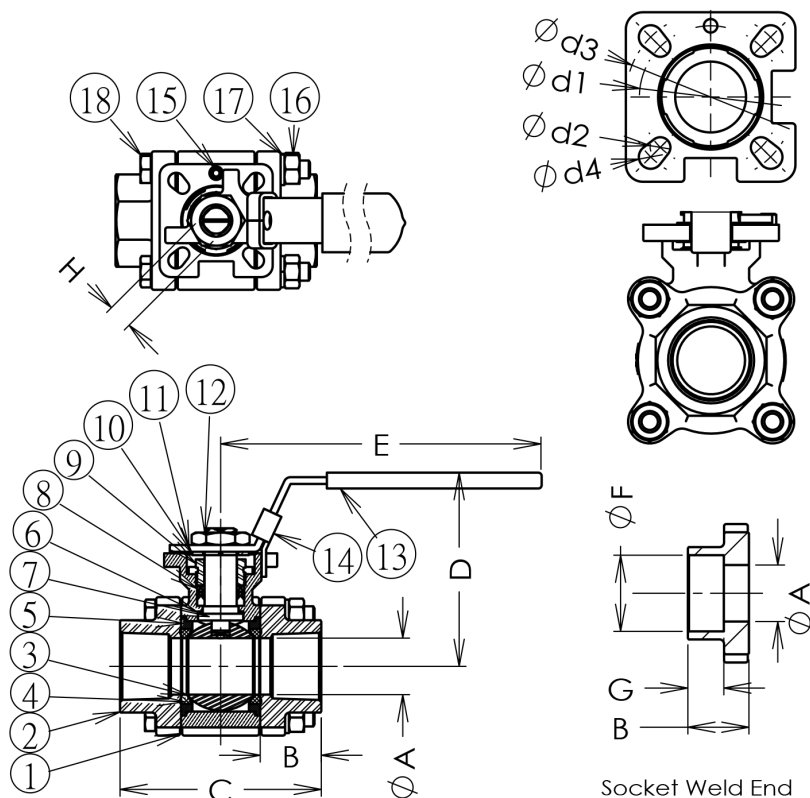




THREE PIECE FULL PORT BALL VALVE 2000 WOG

FEATURES

1. INVESTMENT CASTING
2. BOLT INSIDE
3. ADJUSTABLE STEM PACKING
4. FLOATING BALL
5. ISO 5211 MOUNTING PAD
6. LOCKING LEVER HANDLE(OPTION)
7. THREADS CONFORM TO
ANSI B1.20.1, BS 21, DIN 259 / 2999
8. SOCKET WELD ENDS TO ASME B16.11



No.	PART'S NAME	MATERIAL	
1	BODY	CF8M	WCB
2	CAP	CF8M	WCB
3	BALL	AISI 316/CF8M	
4	BALL SEAT	PTFE+15%GF	
5	JOINT GASKET	PTFE	
6	STEM	AISI 316	
7	THRUST WASHER	PTFE+15%GF	
8	STEM PACKING	GRAPHITE	
9	GLAND NUT	A194 Gr.8	
10	STEM WASHER	AISI 304	
11	HANDLE	AISI 304	
12	STEM NUT	A194 Gr.8	
13	HANDLE COVER	PLASTIC	
14	LOCKING DEVICE	AISI 304	
15	STOP PIN	AISI 304	
16	BOLT NUT	A194 Gr.8	
17	BOLT WASHER	AISI 304	
18	BOLT	A193 B8	

DIMENSIONS

SIZE	1/4"	3/8"	1/2"	3/4"	1"	1-1/4"	1-1/2"	2"
A	9.6	9.6	15	20	25	32	38	50
B	20	20	20	22	31	32.3	33.6	33.3
C	60.4	60	70	79.4	89	101.6	120.8	136.6
D	77	77	77	81	84	96	110	122
E	118	118	118	118	140	190	190	190
F	13.8	17	22	25.7	27	29.1	35.3	33.8
G	11.1	11	13	14.3	15.9	17.5	19.1	22.2
H	9	9	9	9	11	11	11	14
d1	36	36	36	36	42	42	42	50
d2	6	6	6	6	6	6	6	7
d3	42	42	42	42	50	50	50	70
d4	6	6	6	6	7	7	7	9
ISO 5211	F03/F04				F04/F05			F05/F07

TEST PRESSURE

SHELL TEST (WATER)	3000 PSI
SEAT TEST (WATER)	2200PSI
SEAT TEST (AIR)	85PSI

PRESSURE-TEMPERATURE RATING

