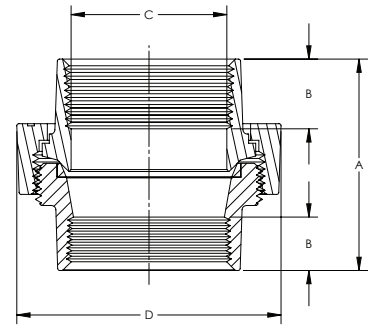
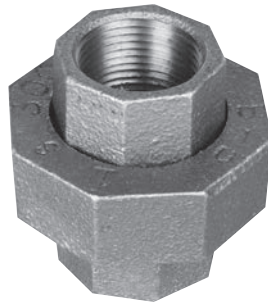


WARD UNION BRASS TO IRON SEAT CLASS 150

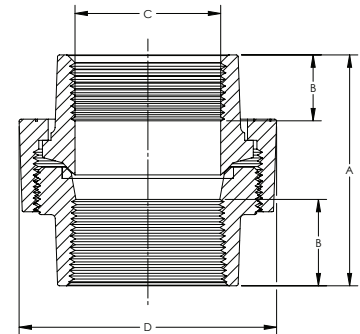
NPS	Overall Length A (min)	Length of Threads B (min)	Thru Hole C (min)	Width of Nut D (min)
1/8	1.26	0.30	0.21	0.93
1/4	1.44	0.32	0.36	1.10
3/8	1.61	0.36	0.52	1.26
1/2	1.72	0.43	0.61	1.45
3/4	1.94	0.50	0.80	1.71
3/4 X 1/2	1.94	0.50	0.80	1.71
1	2.06	0.58	1.00	2.07
1 1/4	2.26	0.67	1.31	2.50
1 1/2	2.41	0.70	1.55	2.82
2	2.75	0.75	2.03	3.41
2 1/2	3.22	0.92	2.38	4.12
3	3.50	0.98	3.00	4.75
*4	3.85	1.08	4.03	6.00



*UL Standards not applicable to 4" size union

WARD UNION BRASS TO IRON SEAT CLASS 250

NPS	Overall Length A (min)	Length of Threads B (min)	Thru Hole C (min)	Width of Nut D (min)
1/8	1.26	0.30	0.21	0.93
1/4	1.55	0.43	0.30	1.11
3/8	1.71	0.47	0.42	1.26
1/2	1.18	0.57	0.54	1.45
3/4	2.07	0.64	0.74	1.71
1	2.31	0.75	0.95	2.07
1 1/4	2.62	0.84	1.27	2.57
1 1/2	2.78	0.87	1.50	2.89
2	3.31	1.00	1.93	3.48
2 1/2	3.52	1.17	2.32	4.15
3	3.84	1.23	2.90	4.69
*4	4.39	1.33	3.82	6.47



*UL Standards not applicable to 4" size union

WARD UNION BRASS TO IRON SEAT CLASS 300

NPS	Overall Length A (min)	Length of Threads B (min)	Thru Hole C (min)	Width of Nut D (min)
1/8	1.26	0.30	0.21	1.26
1/4	1.55	0.43	0.30	1.55
3/8	1.71	0.47	0.42	1.71
1/2	1.81	0.57	0.54	1.81
3/4	2.12	0.64	0.74	2.12
1	2.31	0.75	0.95	2.31
1 1/4	2.66	0.84	1.27	2.66
1 1/2	2.85	0.87	1.50	2.85
2	2.23	1.00	1.93	3.23
2 1/2	3.33	1.17	2.320	3.33
3	4.09	1.23	2.90	4.09
4	—	—	—	—

