

data sheet

ARGCO

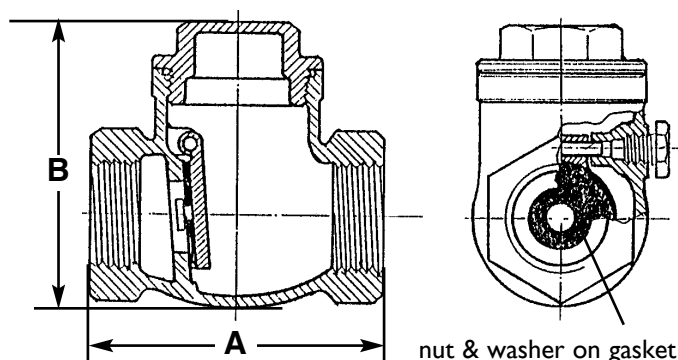


Horizontal Swing Check Valve



- Built for a tight seal on backflow
 - Water, oil & gas - 200 psi
 - 1/2" to 2" IPS
 - Cast Brass Construction
- NOT recommended for pulsating or vibrating service

PART #	DIMENSIONS		
	SIZE	A	B
65-20-105	1/2"	2.07"	2.13"
65-20-110	3/4"	2.36"	2.30"
65-20-115	1"	2.62"	2.62"
65-20-120	1-1/4"	3.17"	3.07"
65-20-125	1-1/2"	3.54"	3.43"
65-20-130	2"	4.25"	4.21"

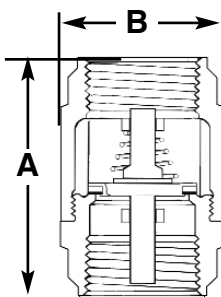


MATERIALS	
PART	MATERIAL
CAP	CAST BRASS
BODY	CAST BRASS
SEAT HOUSE	CAST BRASS
SEAT GASKET	RUBBER
PIN	BRASS ROD
LOCK BOLT	BRASS ROD

Inline Check Valve



Spring loaded, Buna-N Seat
Horizontal or Vertical installation



PART #	DIMENSIONS		
	SIZE	A	B
65-20-140	1" IPS	2.32"	1.77"
65-20-145	1-1/4" IPS	2.64"	2.20"
65-20-150	1-1/2" IPS	2.75"	2.48"
65-20-151	2" IPS	3.15"	3.11"

MATERIALS	
Body	Forged brass
End piece	Forged brass
Stem	Plastic
Spring	Stainless steel
Seat	Buna-N

The information contained herein is produced in good faith and is believed to be reliable but is for guidance only. ARGCO and its agents cannot assume liability or responsibility for results obtained in the use of its product by persons whose methods are outside or beyond our control. It is the user's responsibility to determine the suitability of any of the products, methods of use, or preparation prior to use, mentioned in our literature. It is the user's responsibility to observe and adapt such precautions as may be advisable for the protection of personnel and property in the handling and use of any of our products.

**FOR MORE INFORMATION CALL ARGCO AT 1-800-854-1015
OR LOG ONTO WWW.ARGCO.COM**