

MALLEABLE IRON COUPLING CLASS 150

STRAIGHT COUPLING

NPS	Length of Coupling W	Outside Dia. of Band H (min)	Length of Threads B (min)
1/8"	0.960	0.690	0.250
1/4"	1.060	0.840	0.320
3/8"	1.160	1.010	0.360
1/2"	1.340	1.200	0.430
3/4"	1.520	1.460	0.500
1"	1.670	1.770	0.580
1 1/4"	1.930	2.150	0.670
1 1/2"	2.150	2.430	0.700
2"	2.530	2.960	0.750
2 1/2"	2.880	3.590	0.920
3"	3.180	4.280	0.980
4"	3.690	5.400	1.080

*STEEL

RIGHT AND LEFT HAND THREAD COUPLING

NPS	Length of Coupling A	Outside Dia. of Band H (min)	Length of Threads B (min)
1/2"	1.340	1.200	0.430
3/4"	1.520	1.460	0.500
1"	1.670	1.770	0.580
1 1/4"	1.930	2.150	0.670
1 1/2"	2.150	2.430	0.700
2"	2.530	2.960	0.750

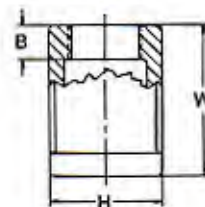


FIGURE 53



MALLEABLE IRON REDUCING COUPLING CLASS 150

FIGURE 53

NPS	Overall Length M	Outside Diameter Large End H2 (min)	Outside Diameter Small End H (min)	Take Out	Take Out	Length of Threads Large B1 (min)	Length of Threads Small B2 (min)
1/4 x 1/8"	1.000	0.840	0.690	0.161	0.230	0.320	0.250
3/8 x 1/4"	1.130	1.010	0.840	0.155	0.175	0.360	0.320
1/2 x 3/8"	1.250	1.200	1.010	0.095	0.215	0.430	0.360
1/2 x 1/4"	1.250	1.200	0.840	0.095	0.235	0.430	0.320
1/2 X 1/8"	1.250	1.237	0.733	0.125	0.375	0.470	0.290
3/4 x 1/2"	1.440	1.460	1.200	0.120	0.190	0.500	0.430
3/4 x 3/8"	1.440	1.460	1.010	0.120	0.310	0.500	0.360
3/4 x 1/4"	1.440	1.460	0.840	0.120	0.330	0.500	0.320
3/4 X 1/8"	1.440	1.344	0.733	0.138	0.325	0.540	0.290
1 x 3/4"	1.690	1.770	1.460	0.185	0.245	0.580	0.500
1 x 1/2"	1.690	1.770	1.200	0.185	0.315	0.580	0.430
1 x 3/8"	1.690	1.770	1.010	0.185	0.435	0.580	0.360
1 1/4 x 1"	2.060	2.150	1.770	0.342	0.370	0.670	0.580
1 1/4 x 3/4"	2.060	2.150	1.460	0.350	0.430	0.670	0.500
1 1/4 x 1/2"	2.060	2.150	1.200	0.350	0.500	0.670	0.430
1 1/2 x 1 1/4"	2.310	2.430	2.150	0.475	0.475	0.700	0.670
1 1/2 x 1"	2.310	2.430	1.770	0.475	0.495	0.700	0.580
1 1/2 x 3/4"	2.310	2.430	1.460	0.475	0.555	0.700	0.500
1 1/2 x 1/2"	2.310	2.430	1.200	0.475	0.625	0.700	0.430
2 x 1 1/2"	2.810	2.960	2.430	0.655	0.725	0.750	0.700
2 x 1 1/4"	2.810	2.960	2.150	0.705	0.725	0.750	0.670
2 x 1"	2.810	2.960	1.770	0.705	0.725	0.750	0.580
2 x 3/4"	2.810	2.960	1.460	0.705	0.805	0.750	0.500
2 x 1/2"	2.810	2.960	1.200	0.705	0.875	0.750	0.430
2 1/2 x 2"	3.250	3.590	2.960	0.695	0.925	0.920	0.750
2 1/2 x 1 1/2"	3.250	3.590	2.430	0.695	0.945	0.920	0.700
3 x 2 1/2"	3.690	4.280	3.590	0.825	0.915	0.980	0.920
3 x 2"	3.690	4.280	2.960	0.825	1.145	0.980	0.750
3 x 1 1/2"	3.690	4.280	2.430	0.825	1.165	0.980	0.700
3 x 1 1/4"	3.690	4.280	2.150	0.825	1.165	0.980	0.670
3 x 1"	3.690	4.280	1.770	0.825	1.185	0.980	0.580
4 x 3"	4.380	5.400	4.280	1.065	1.170	1.080	0.980
4 x 2"	4.380	5.400	2.960	1.065	1.490	1.080	0.750

